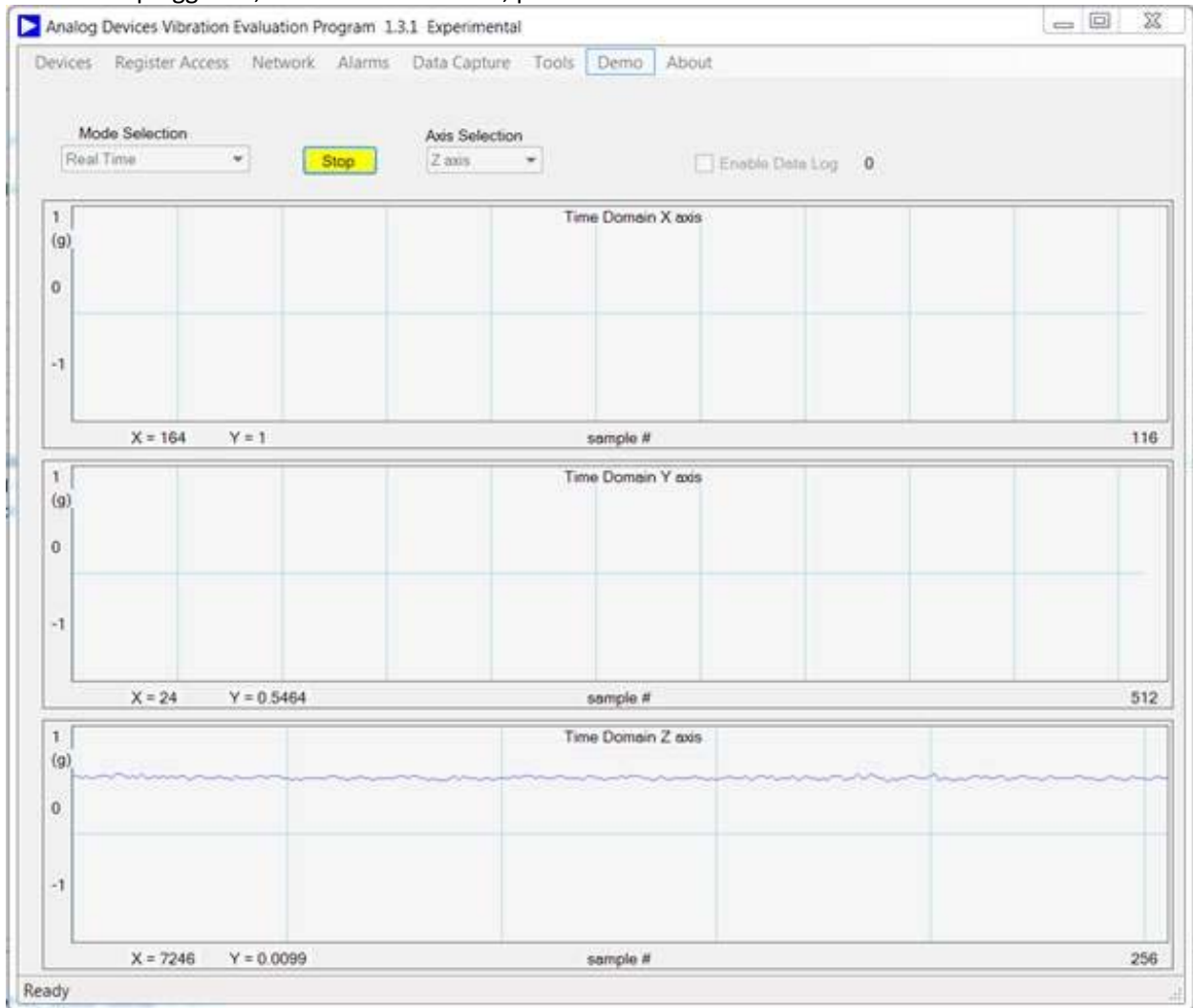


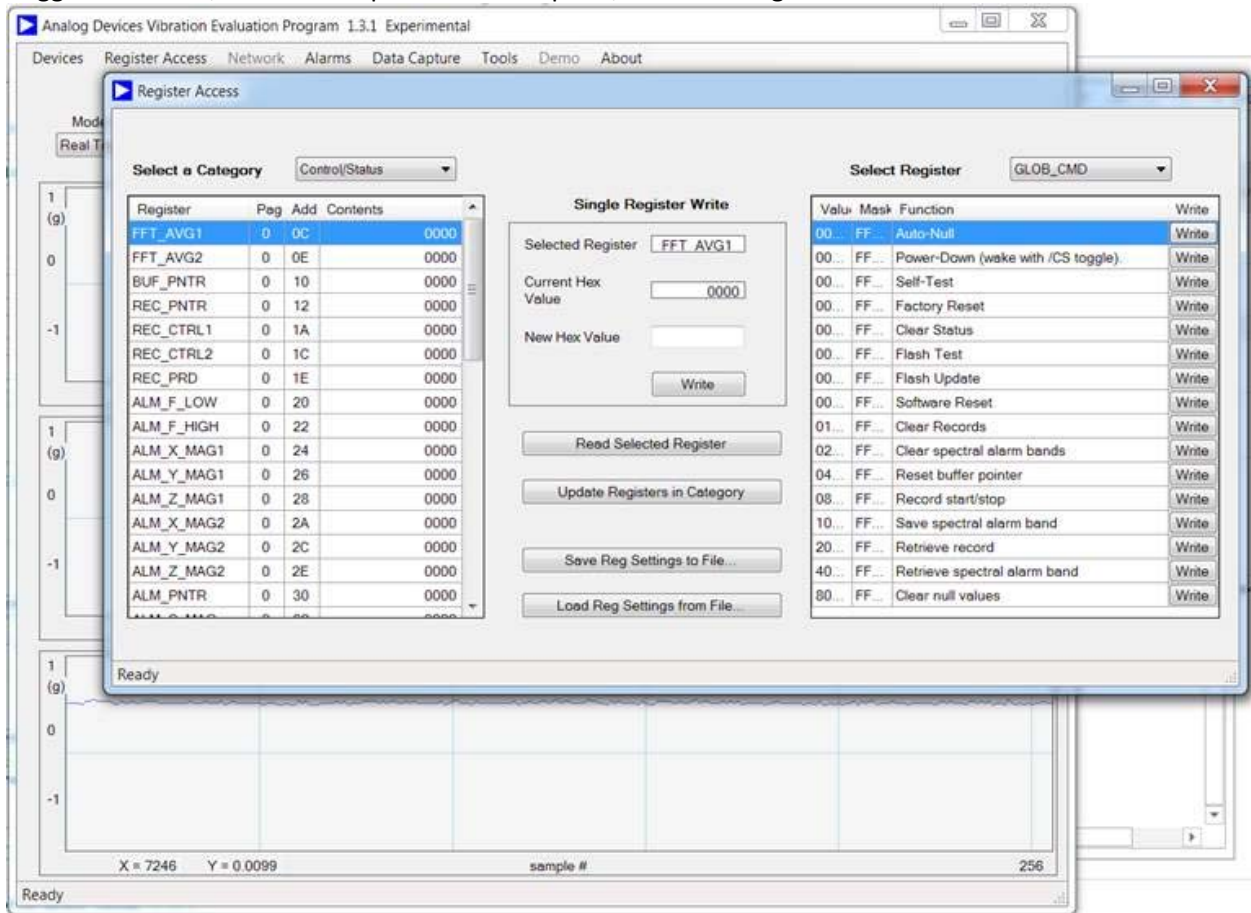
INTERNAL REPORT OF BEHAVIOR

When using the Vibration Evaluation Program (v1.3.1) to test an ADIS16288, I observed an unexpected behavior. After executing an Auto-null command (**Register Access Menu**), the software will not support **Real-Time** mode. It will support real-time mode, after I put the device into **Manual FFT** mode, then go back to **Real Time** mode. Here are more details:

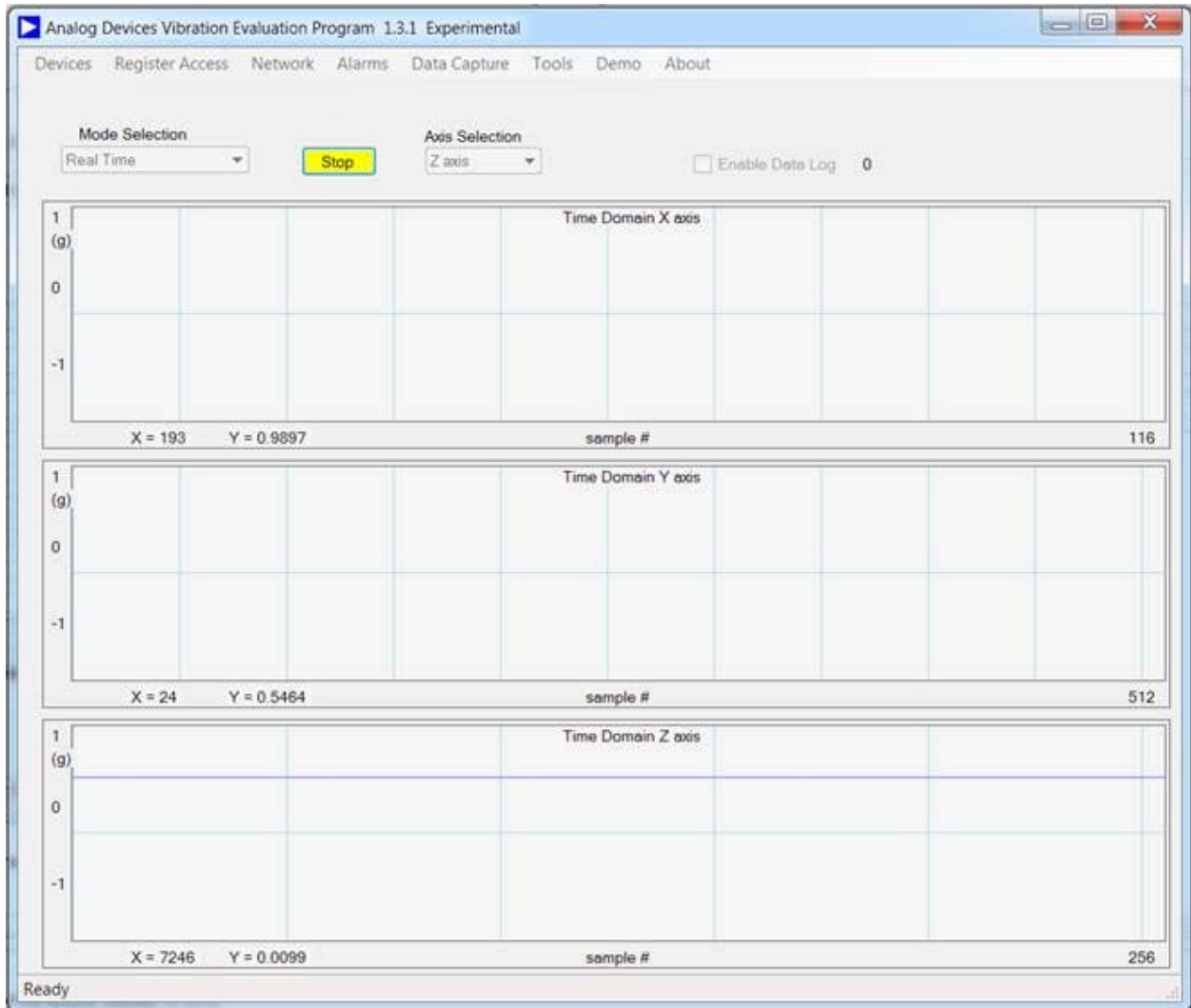
1. ADIS16228 plugged in, Real-Time still works, pre-Auto-Null.



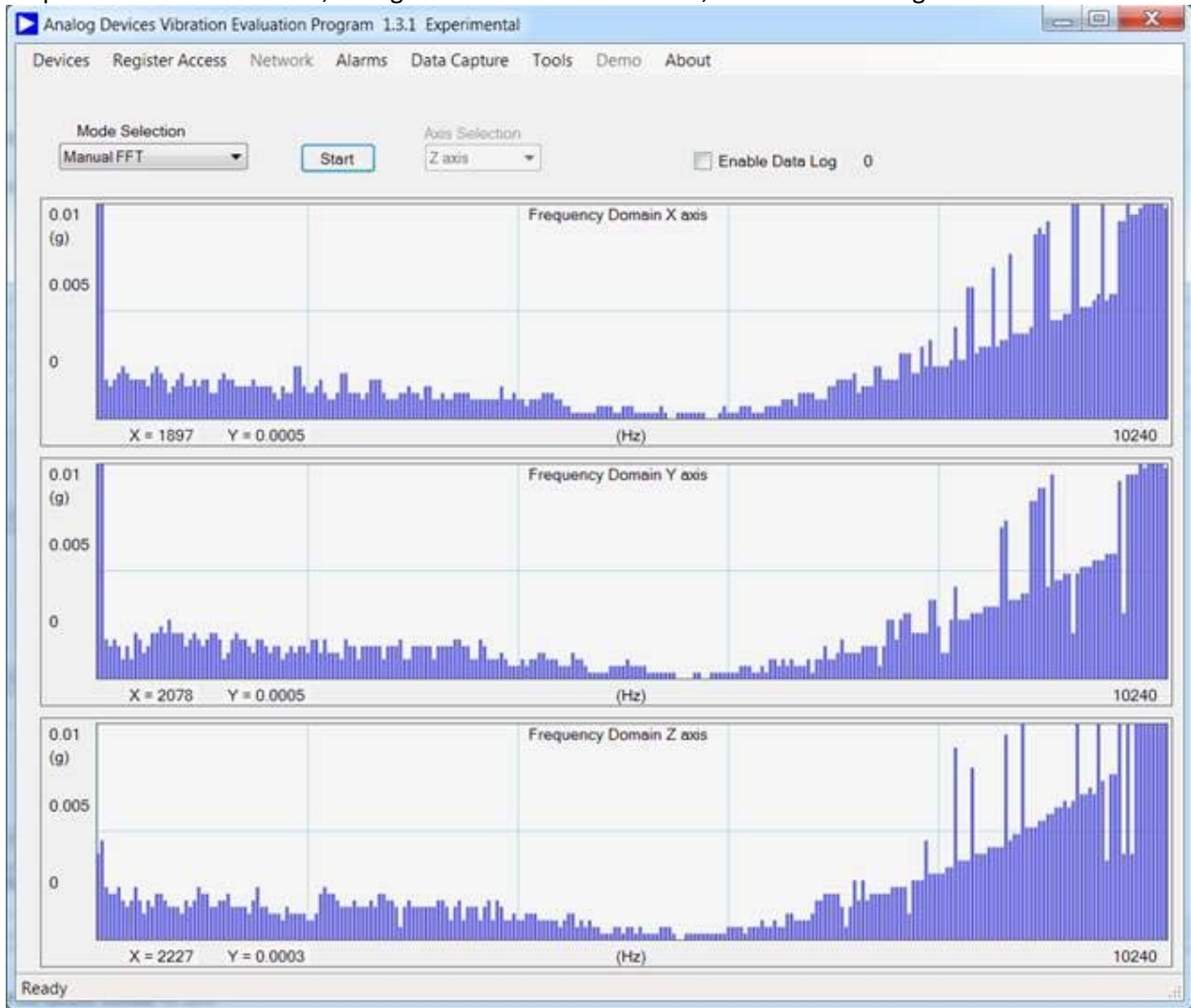
2. Trigger Auto-Null, wait for the process to complete, close the Register Access Window



- Real-Time display no longer works, displays a flat line on the graph, and the DIO1 LED on the breakout board does not turn on.



4. Stop the Real-Time function, change the mode to Manual FFT, and take a reading.



5. Return to Real-Time mode, start capture, and the device will begin to stream data.

