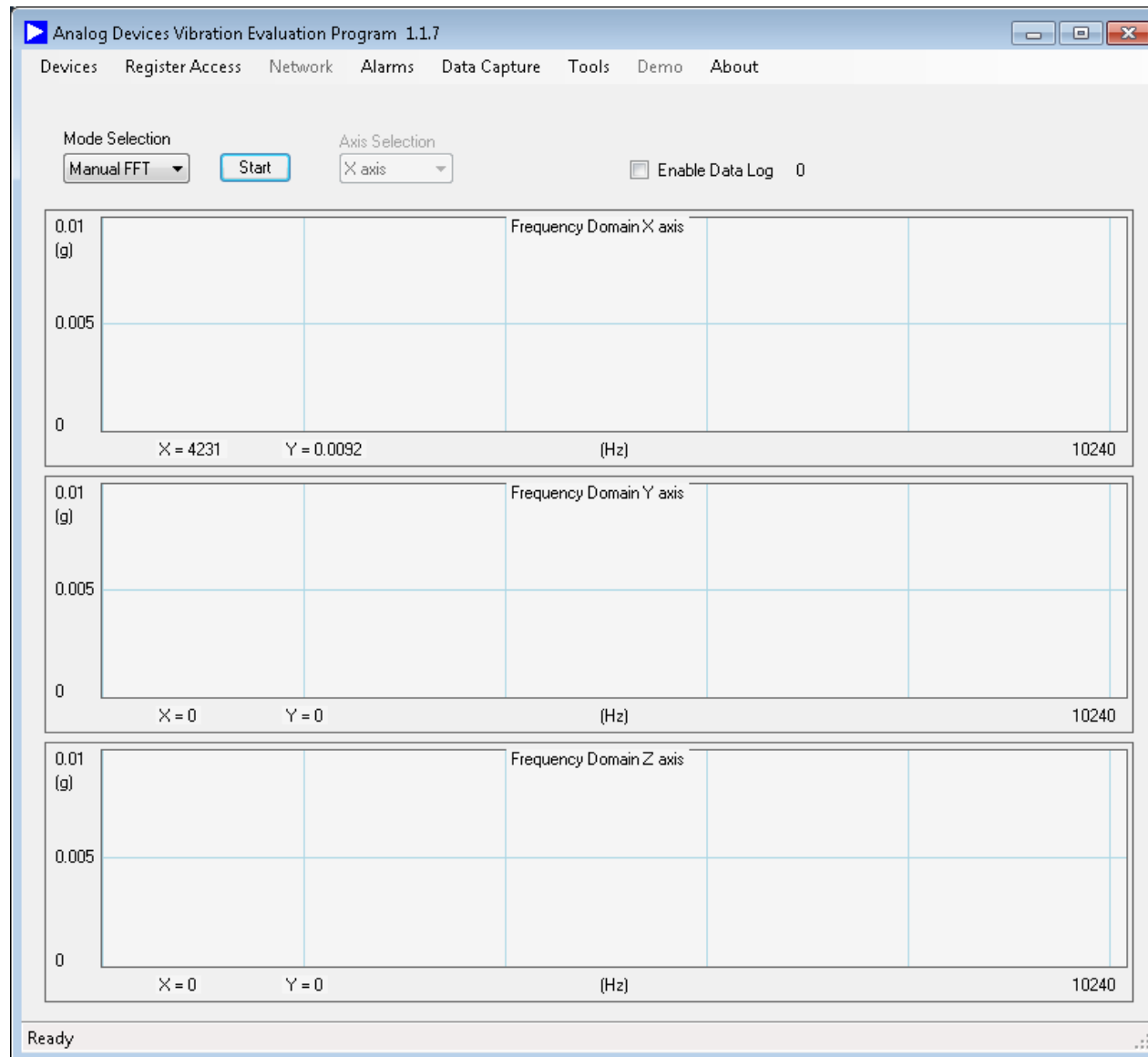


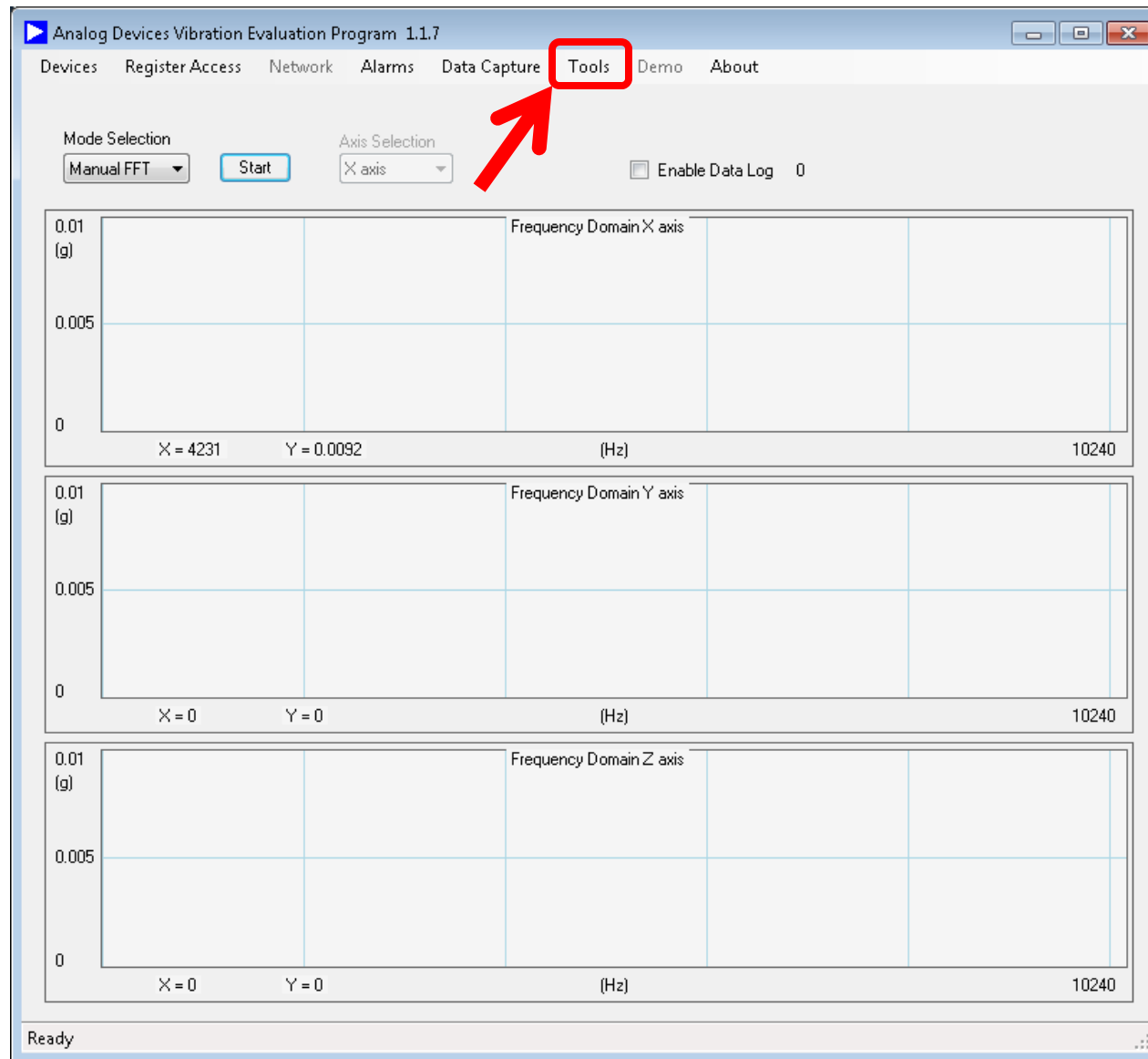
# Solution Summary

- VEP, v1.1.7
- Device = ADIS16229 (ADIS16000)
- In order to support reliable communication between the ADIS16000 and the EVAL-ADIS, the **Tstall** entry, in the **SPI Setting** menu, should be at least 80 cycles, when the SCLK rate is at the 2 MHz default.
- These steps illustrate the process of updating this entry

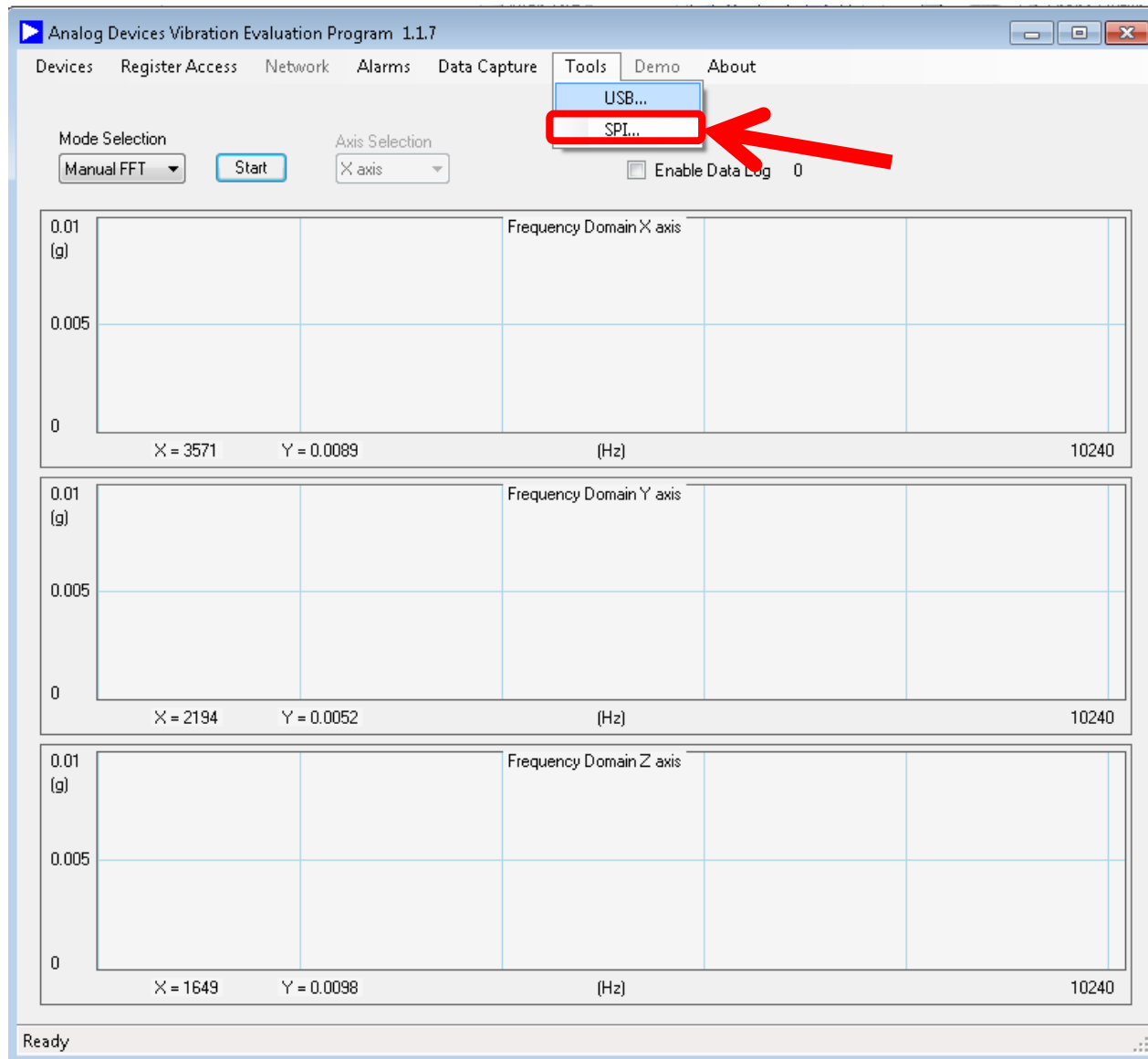
# Step #1 – Start the software



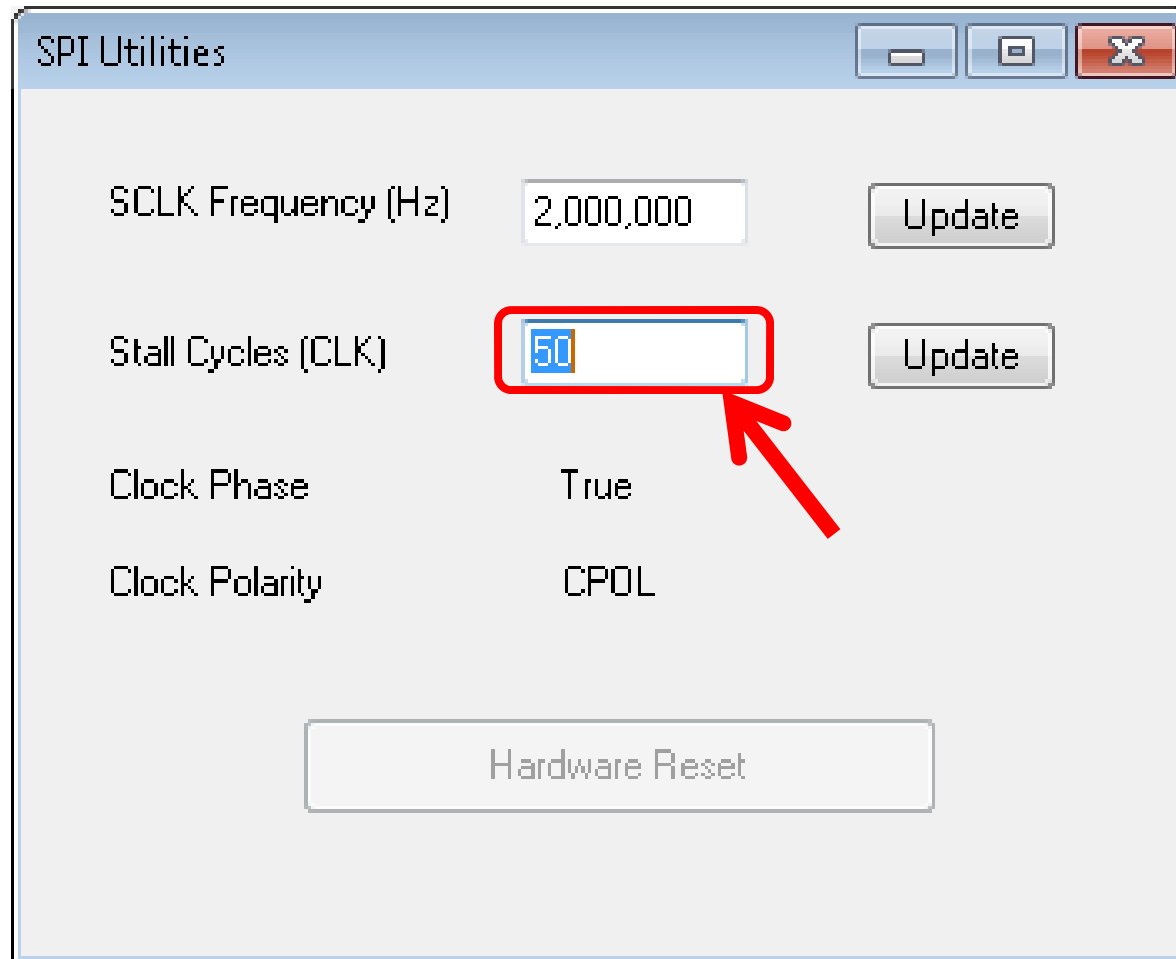
## Step #2 – Click on **Tools** on the **Menu Bar**



# Step #3 – Click on **SPI** on the **Tools Drop-down Menu**



Step #4 – Click on **Tstall** box and change entry to **80**



Step #4 – Click on **Update** button and then close window

