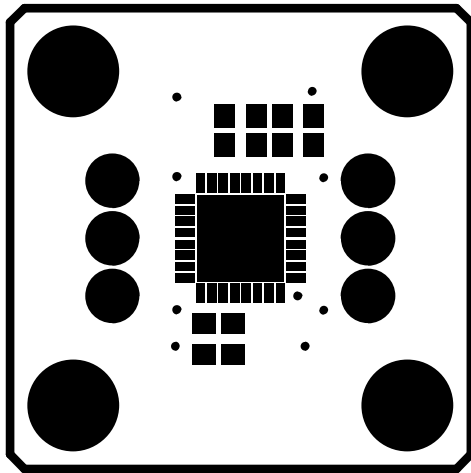


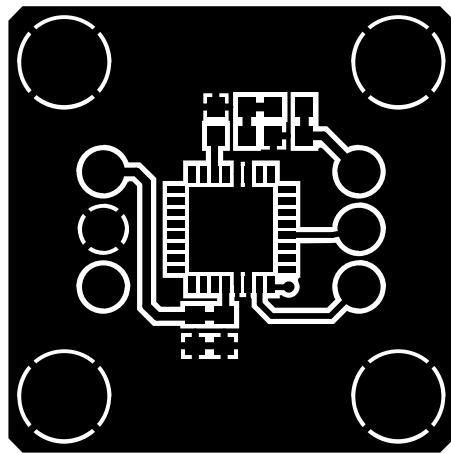
301-884.pss

Primary (Top) Silkscreen



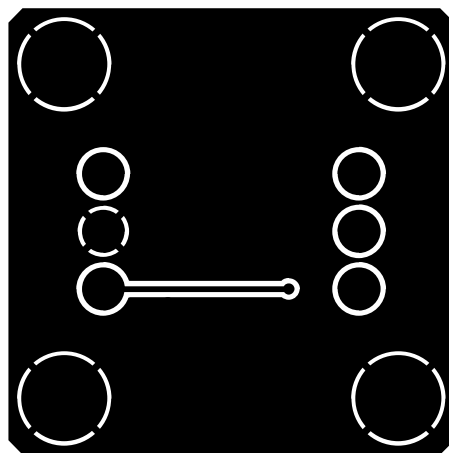
301-884.psm

Primary (Top) Soldermask



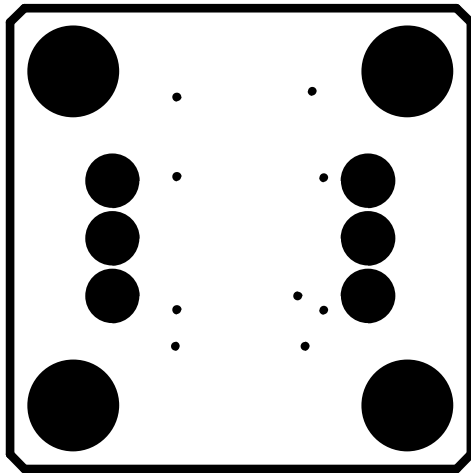
301-884.ly1

First (Top) Copper Layer



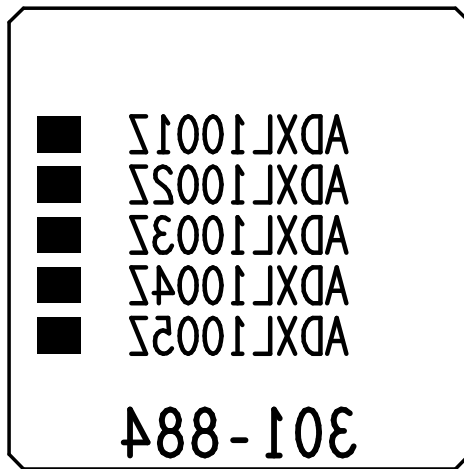
301-884.y2

Second (Bottom) Copper Layer



301 - 884 . s s m

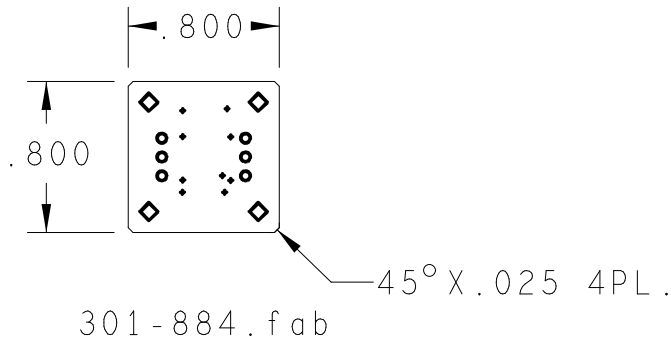
Secondary (Bottom) Soldermask



301-884 . s s s

Secondary (Bottom) Silkscreen

PRIMARY SIDE VIEW



NOTES :

1. PCB SPEC: PCB SHALL BE MANUFACTURED TO MEET ALL SPECIFICATIONS AND REQUIREMENTS OF IPC-6011 AND IPC-6012, CLASS 2 EXCEPT AS NOTED.
2. MATERIAL: EPOXY GLASS, TYPE FR4, 0.093" THICK, 1 OZ CU PLATE BOTH SIDES, DK 4.3-4.5
3. SOLDER MASK: COLOR GREEN, PHOTOIMAGEABLE TYPE PER IPC SM-840, TYPE B, CLASS 2. APPLY IMMERSION GOLD (NIG) OR SILVER.
4. FINISH: WHITE TIN IS ACCEPTABLE.
5. SILKSCREEN: APPLY WHITE EPOXY INK TO COMPONENT SIDE OF PCB. ADD VENDOR ID AND DATE CODE TO SILKSCREEN TOP.
6. DRILL SIZES: HOLES SIZES IN DRILL LEGEND REPRESENT FINISHED SIZE AFTER PLATING. MIN THICKNESS TO BE 0.0015".
7. PHOTOTOOLS: ON FINISHED PCB'S, COPPER ETCH IS TO BE WITHIN +/- 0.0005" OF PHOTOTOOL DATA.

DRILL CHART: LY1 to LY2			
ALL UNITS ARE IN MILS			
SYMBOL	SIZE	FINISH	QTY
♦	10.0	PLATED	9
○	43.0	PLATED	6
◇	120.0	PLATED	4

					NAME ADXL100xZ Evaluation Circuit Board												
					DWN/DESS GL		DATE 2017-10-27		CHK/VER DR		DATE 2017-10-27		APPD/APP DR		DATE 2017-10-27		
					A		CODE 301-884										
					SCALE/ECHELLE 1:1		INTEMPCO CONTROLS LTD LES CONTROLES INTEMPCO LTEE					SHEET FEUILLE		1 1		OF DE	
LTR/LET	REVISION		DATE	DWN/DESS	CHK/VER												

CE DESSIN ET SES SPECIFICATIONS SONT LA PROPRIETE DE LES CONTROLES INTEMPCO LTEE. IL NE PEUVENT ETRE PRETES, TRANSFERES, REPRODUITS, COPIES OU SERVIR A LA FABRICATION, L'ACHAT OU LA VENTE D'ARTICLES SANS LE CONSENTEMENT ECRIT DE LES CONTROLES INTEMPCO LTEE.
THIS DRAWING AND SPECIFICATIONS HEREIN ARE THE PROPERTY OF INTEMPCO CONTROLS LTD AND MUST NOT BE LOANED OR OTHERWISE TRANSFERRED TO ANY THIRD PARTY OR REPRODUCED, COPIED OR USED IN CONNECTION WITH THE MANUFACTURE PURCHASE OR SALE OF ITEMS WITHOUT WRITTEN CONSENT OF INTEMPCO CONTROLS LTD.