

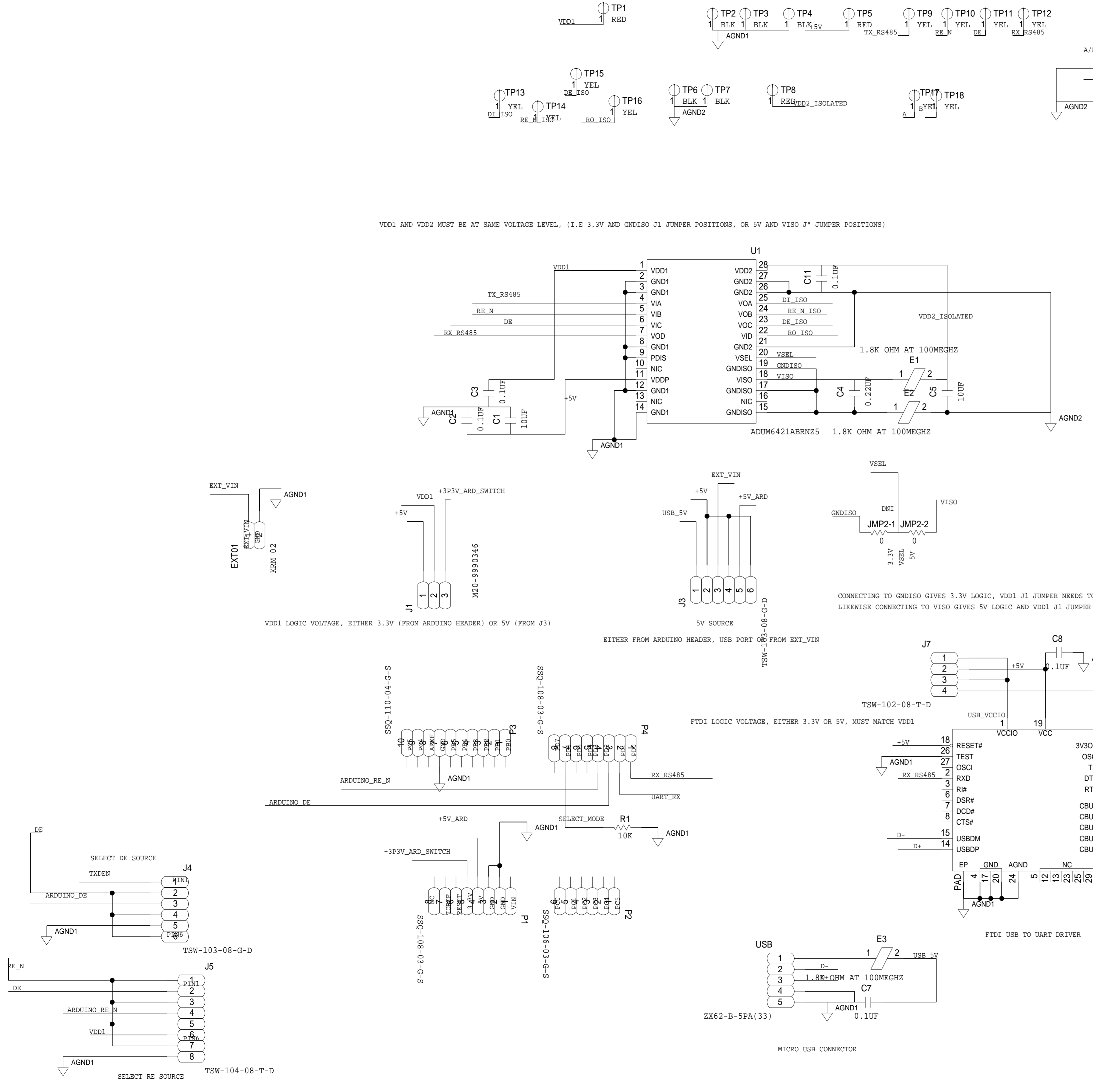
REVISIONS			
REV	DESCRIPTION	DATE	APPROVED

VDD1 AND VDD2 MUST BE AT SAME VOLTAGE LEVEL, (I.E 3.3V AND GNDISO J1 JUMPER POSITIONS, OR 5V AND VISO J* JUMPER POSITIONS)

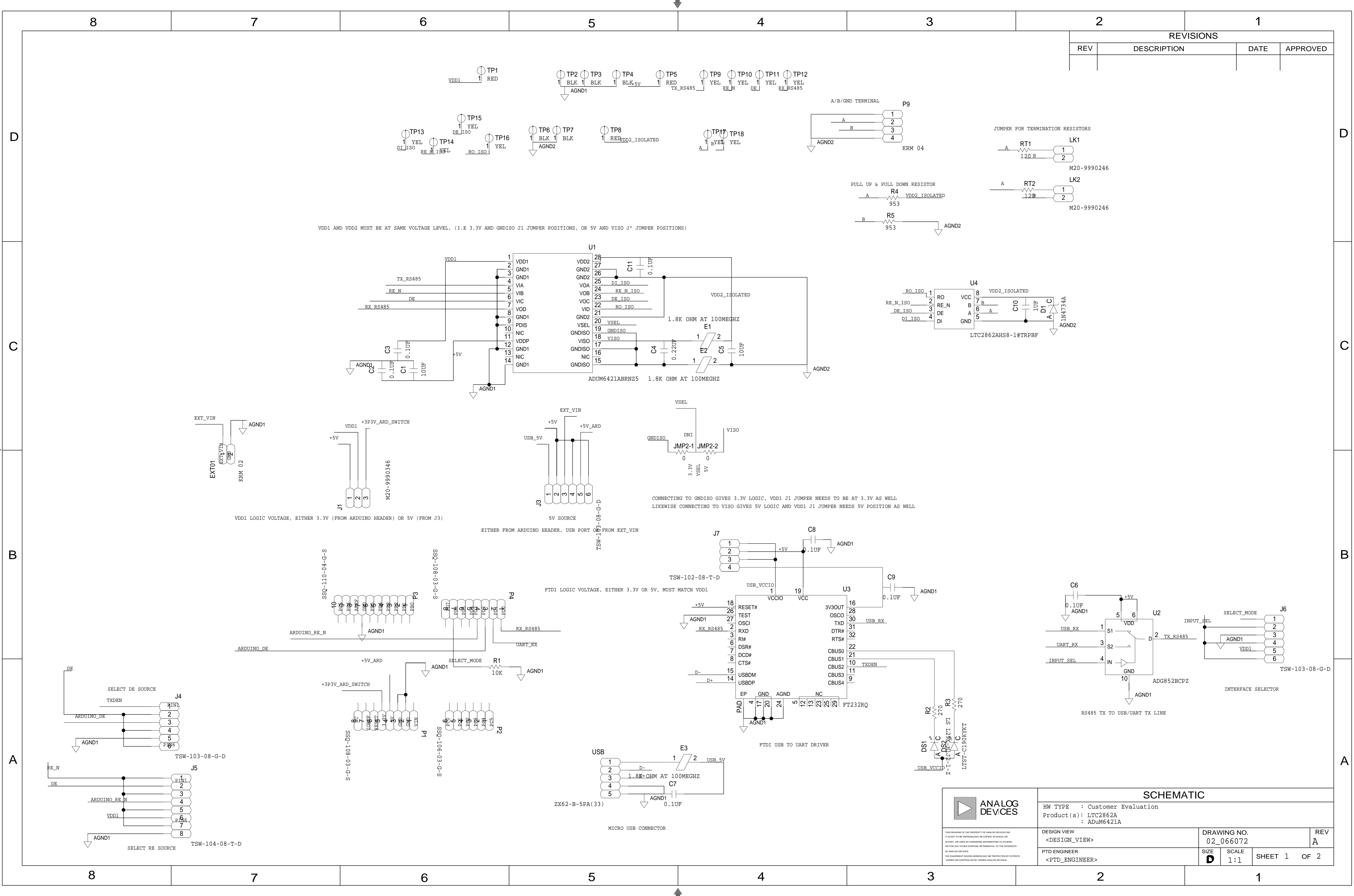
CONNECTING TO GNDISO GIVES 3.3V LOGIC, VDD1 J1 JUMPER NEEDS TO BE AT 3.3V AS WELL
 LIKEWISE CONNECTING TO VISO GIVES 5V LOGIC AND VDD1 J1 JUMPER NEEDS 5V POSITION AS WELL

FTDI LOGIC VOLTAGE, EITHER 3.3V OR 5V, MUST MATCH VDD1

RS485 TX TO USB/UART TX LINE



	SCHEMATIC		
	HW TYPE : Customer Evaluation Product(s) : LTC2862A : ADuM6421A		
	DESIGN VIEW <DESIGN_VIEW>	DRAWING NO. 02_066072	REV A
	PTD ENGINEER <PTD_ENGINEER>	SIZE D	SCALE 1:1
		SHEET 1 OF 2	




8 7 6 5 4 3 2 1

REVISIONS

REV	DESCRIPTION	DATE	APPROVED

D
C
B
A

D
C
B
A

 <p><small>THIS DRAWING IS THE PROPERTY OF ANALOG DEVICES INC. IT IS NOT TO BE REPRODUCED OR COPIED, IN WHOLE OR IN PART, OR USED IN FURNISHING INFORMATION TO OTHERS, OR FOR ANY OTHER PURPOSE DETRIMENTAL TO THE INTERESTS OF ANALOG DEVICES. THE EQUIPMENT SHOWN HEREON MAY BE PROTECTED BY PATENTS OWNED OR CONTROLLED BY ANALOG DEVICES.</small></p>	SCHEMATIC		
	HW TYPE : Customer Evaluation Product(s) : LTC2862A : ADuM6421A		
	DESIGN VIEW <DESIGN_VIEW>	DRAWING NO. 02_066072	REV A
	PTD ENGINEER <PTD_ENGINEER>	SIZE D SCALE 1:1 SHEET 2 OF 2	

8 7 6 5 4 3 2 1

