

REVISIONS			
REV	DESCRIPTION	DATE	APPROVED
A	INITIAL RELEASE	16APR19	J.NASO
B	ECR-088871	14JUN19	J.NASO
B1	ECR-093299	13MAY20	J.NASO

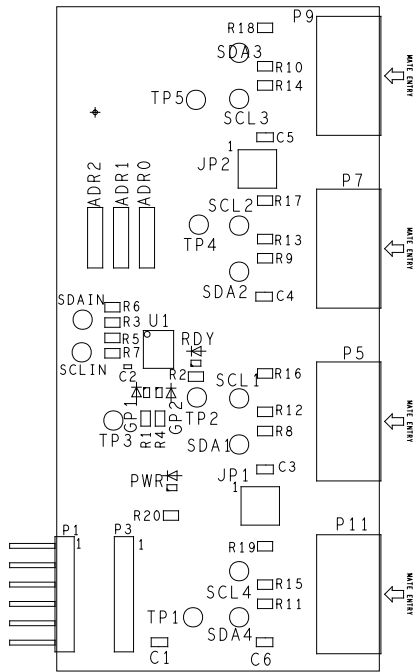
ASSEMBLY NOTES:


1.
- BOARD ACCEPTABILITY PER ANALOG DEVICES, INC. SPECIFICATION TST00119 (LATEST REVISION).
2.
- REPAIRS PER IPC-7711/21(LATEST REVISION) ARE ALLOWED.
3.
- REPAIRS ARE NOT ALLOWED IN SOLDERMASK FREE AREAS ON EITHER SIDE OF THE BOARD.
4.
- RoHS COMPLIANCE: ASSEMBLY VENDOR SHOULD ASSURE COMPLIANCE WITH LEAD-FREE AND RoHS PCB ASSEMBLY STANDARDS (EU RoHS DIRECTIVE 2002/95/EC).
5.
- SPECIFIC COMPONENTS SHOULD BE INSTALLED WITH THEIR CORRESPONDING MECHANICAL PARTS LISTED ON THE MECHANICAL PARTS SECTION OF THE BOM.

INSTALL 1 M033288 AT ADRO SHORTING PINS 1 AND 2.
INSTALL 1 M033288 AT ADR1 SHORTING PINS 1 AND 2.
INSTALL 1 M033288 AT ADR2 SHORTING PINS 1 AND 2.
INSTALL 1 M000385 AT JP1 SHORTING PINS 1 AND 2.
INSTALL 1 M000385 AT JP1 SHORTING PINS 3 AND 4.
INSTALL 1 M000385 AT JP2 SHORTING PINS 1 AND 2.
INSTALL 1 M000385 AT JP2 SHORTING PINS 3 AND 4.

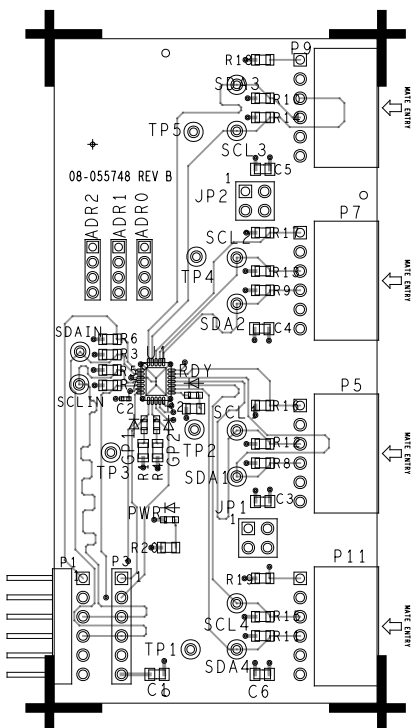
6.
- PLEASE CONTACT YOUR LOCAL REPRESENTATIVE FOR ALL WURTH PARTS ON THIS BOM. ALL WURTH PARTS WILL BE PROVIDED AT NO COST FOR ANALOG DEVICES CUSTOMER EVALUATION BOARD BUILDS WHICH LIST THE WURTH PART NUMBERS LISTED IN ASSOCIATED USER GUIDE BOM.

PRIMARY SIDE

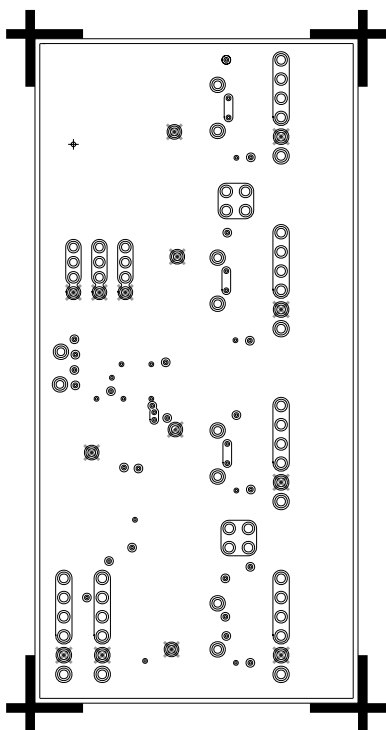


UNLESS OTHERWISE SPECIFIED DIMENSIONS ARE IN INCHES TOLERANCES DECIMALS FRACTIONS ANGLES .xx . . .010 .1/32 .2 .xxx . . .005	ASSEMBLY		 ANALOG DEVICES		RFMG DIVISION 831 WOBURN STREET WILMINGTON, MA 01887	
	APPROVAL	DATE	TITLE			
	DRAWN BY V. GUTBIER	16MAR19	LTC4306-PMDZ EVAL BD			
	DESIGNED J. NASO	16MAR19				
MATERIAL			SIZE	FSCM NO	DRAWING NUMBER	REV
FINISH			D		01-055748	B1
DO NOT SCALE DWG			SCALE	2/1	SHEET 1 OF 1	

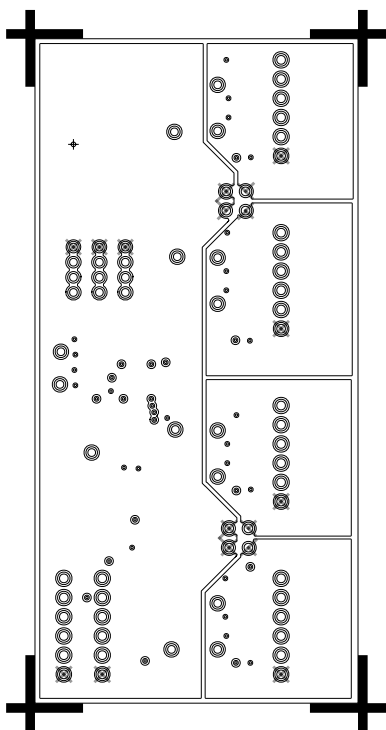
L1 PRIMARY
08-055748 -01
REV B



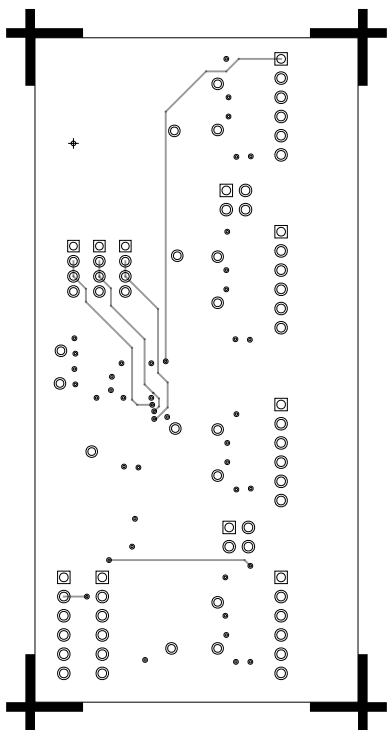
L2_DGND1
08-055748-07
REV B



L3_PWR
08-055748-08
REV B

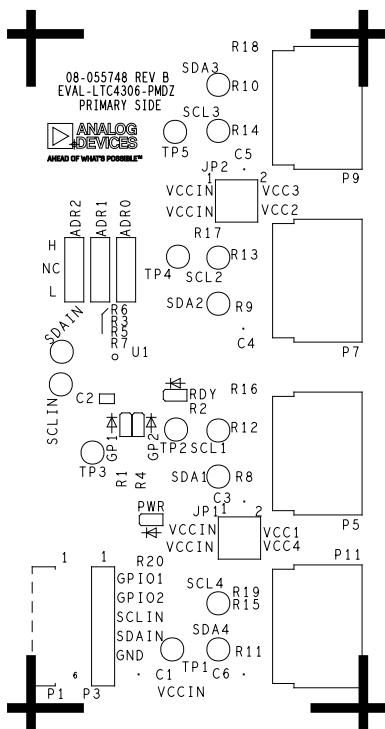


L4 SECONDARY
08-055748-02
REV B



SILKSCREEN PRIMARY

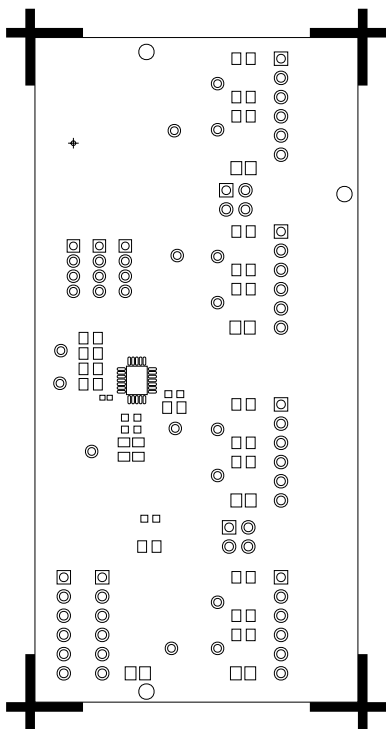
08-055748 - 03
REV B



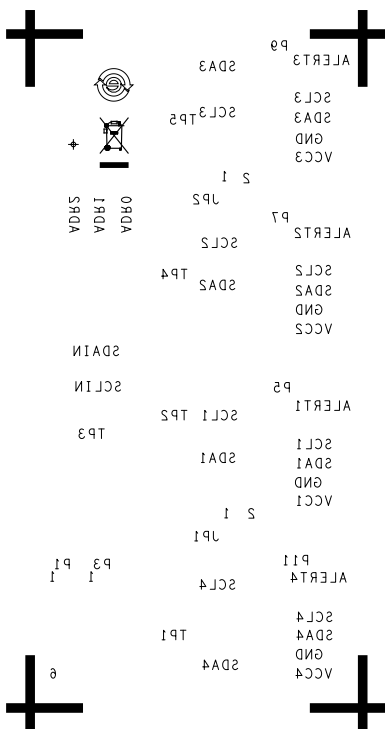
SOLDERMASK PRIMARY

08-055748 - 04

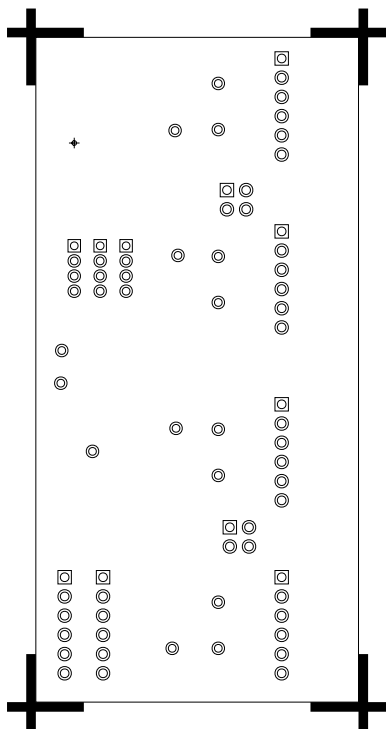
REV B



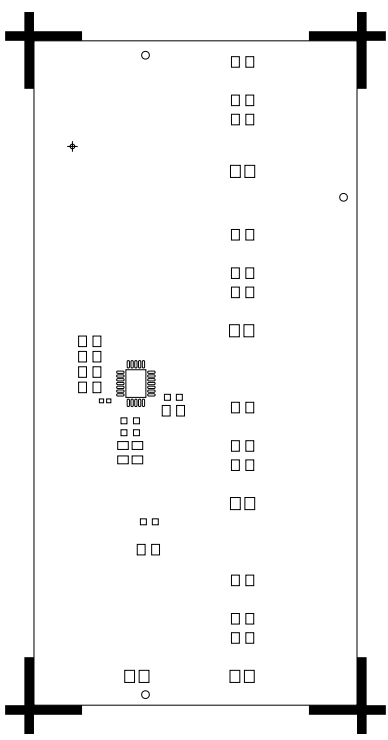
SILKSCREEN SECONDARY
08-055748-05
REV B

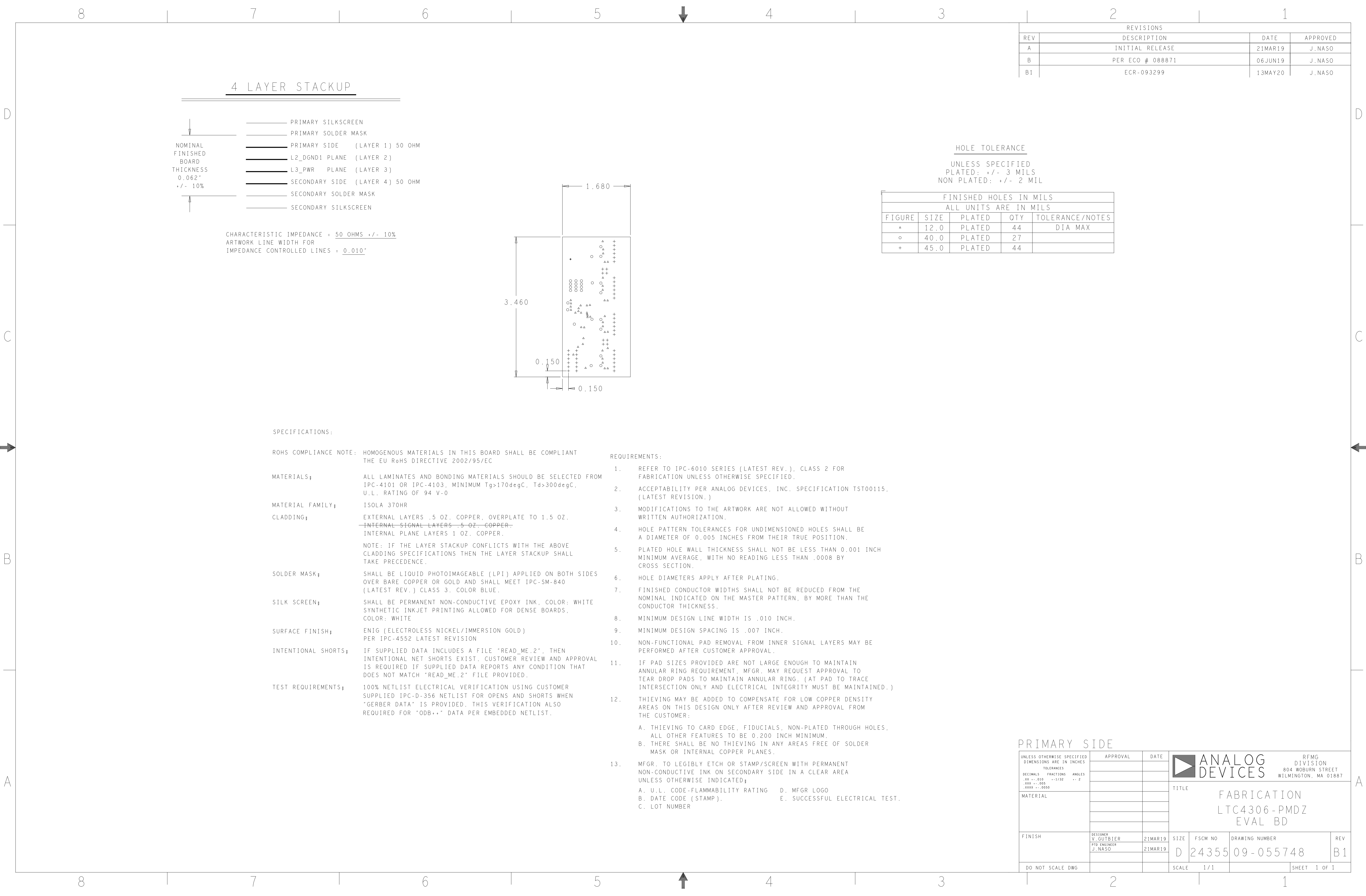


SOLDERMASK SECONDARY
08 - 055748-06
REV B

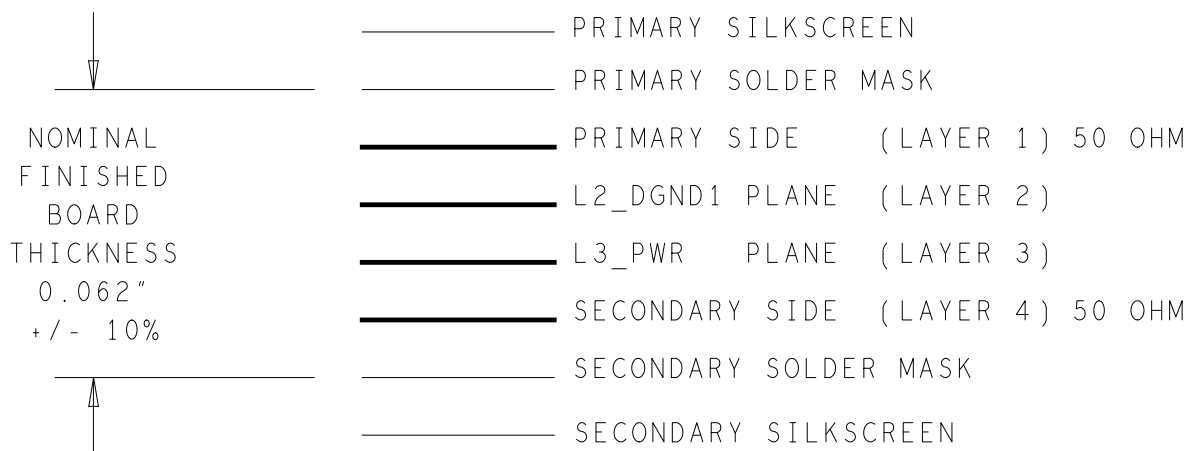


PASTEMASK PRIMARY
08 - 055748 - 09
REV B

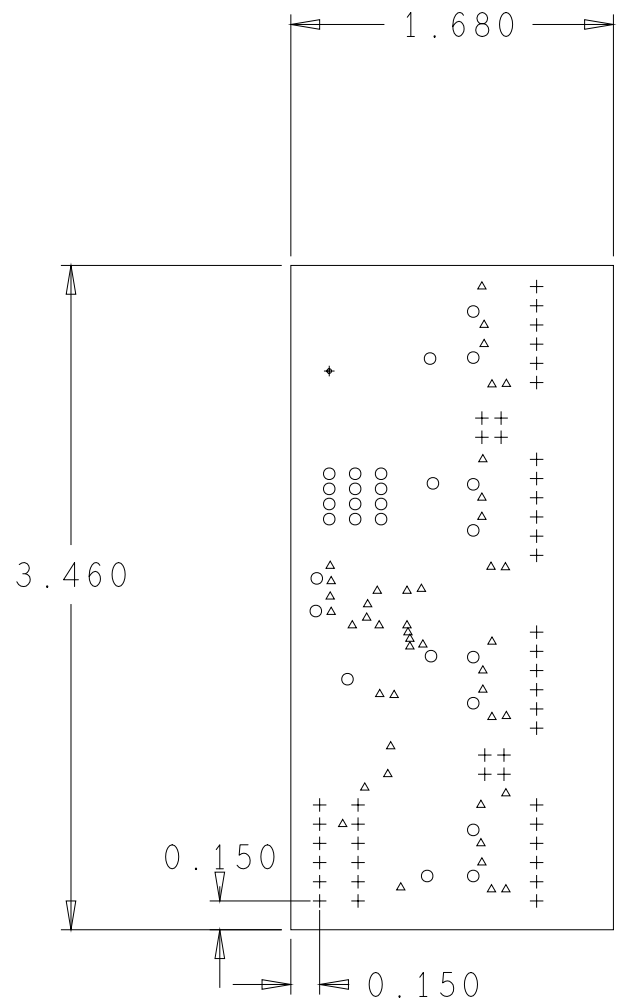




4 LAYER STACKUP



CHARACTERISTIC IMPEDANCE = 50 OHMS +/- 10%
ARTWORK LINE WIDTH FOR
IMPEDANCE CONTROLLED LINES = 0.010"



HOLE TOLERANCE

UNLESS SPECIFIED
PLATED: +/- 3 MILS
NON PLATED: +/- 2 MIL

FINISHED HOLES IN MILS				
ALL UNITS ARE IN MILS				
FIGURE	SIZE	PLATED	QTY	TOLERANCE/NOTES
△	12.0	PLATED	44	DIA MAX
○	40.0	PLATED	27	
+	45.0	PLATED	44	


SPECIFICATIONS:

ROHS COMPLIANCE NOTE: HOMOGENOUS MATERIALS IN THIS BOARD SHALL BE COMPLIANT THE EU RoHS DIRECTIVE 2002/95/EC	
MATERIALS;	ALL LAMINATES AND BONDING MATERIALS SHOULD BE SELECTED FROM IPC-4101 OR IPC-4103, MINIMUM Tg>170degC, Td>300degC, U.L. RATING OF 94 V-0
MATERIAL FAMILY;	ISOLA 370HR
CLADDING;	EXTERNAL LAYERS .5 OZ. COPPER, OVERPLATE TO 1.5 OZ. INTERNAL SIGNAL LAYERS .5 OZ. COPPER. INTERNAL PLANE LAYERS 1 OZ. COPPER.
	NOTE: IF THE LAYER STACKUP CONFLICTS WITH THE ABOVE CLADDING SPECIFICATIONS THEN THE LAYER STACKUP SHALL TAKE PRECEDENCE.
SOLDER MASK;	SHALL BE LIQUID PHOTOIMAGEABLE (LPI) APPLIED ON BOTH SIDES OVER BARE COPPER OR GOLD AND SHALL MEET IPC-SM-840 (LATEST REV.) CLASS 3. COLOR BLUE.
SILK SCREEN;	SHALL BE PERMANENT NON-CONDUCTIVE EPOXY INK, COLOR: WHITE SYNTHETIC INKJET PRINTING ALLOWED FOR DENSE BOARDS, COLOR: WHITE
SURFACE FINISH;	ENIG (ELECTROLESS NICKEL/IMMERSION GOLD) PER IPC-4552 LATEST REVISION
INTENTIONAL SHORTS;	IF SUPPLIED DATA INCLUDES A FILE "READ_ME.2", THEN INTENTIONAL NET SHORTS EXIST. CUSTOMER REVIEW AND APPROVAL IS REQUIRED IF SUPPLIED DATA REPORTS ANY CONDITION THAT DOES NOT MATCH "READ_ME.2" FILE PROVIDED.
TEST REQUIREMENTS;	100% NETLIST ELECTRICAL VERIFICATION USING CUSTOMER SUPPLIED IPC-D-356 NETLIST FOR OPENS AND SHORTS WHEN "GERBER DATA" IS PROVIDED, THIS VERIFICATION ALSO REQUIRED FOR "ODB++" DATA PER EMBEDDED NETLIST.

REQUIREMENTS:

- REFER TO IPC-6010 SERIES (LATEST REV.), CLASS 2 FOR FABRICATION UNLESS OTHERWISE SPECIFIED.
- ACCEPTABILITY PER ANALOG DEVICES, INC. SPECIFICATION TST00115, (LATEST REVISION.)
- MODIFICATIONS TO THE ARTWORK ARE NOT ALLOWED WITHOUT WRITTEN AUTHORIZATION.
- HOLE PATTERN TOLERANCES FOR UNDIMENSIONED HOLES SHALL BE A DIAMETER OF 0.005 INCHES FROM THEIR TRUE POSITION.
- PLATED HOLE WALL THICKNESS SHALL NOT BE LESS THAN 0.001 INCH MINIMUM AVERAGE, WITH NO READING LESS THAN .0008 BY CROSS SECTION.
- HOLE DIAMETERS APPLY AFTER PLATING.
- FINISHED CONDUCTOR WIDTHS SHALL NOT BE REDUCED FROM THE NOMINAL INDICATED ON THE MASTER PATTERN, BY MORE THAN THE CONDUCTOR THICKNESS.
- MINIMUM DESIGN LINE WIDTH IS .010 INCH.
- MINIMUM DESIGN SPACING IS .007 INCH.
- NON-FUNCTIONAL PAD REMOVAL FROM INNER SIGNAL LAYERS MAY BE PERFORMED AFTER CUSTOMER APPROVAL.
- IF PAD SIZES PROVIDED ARE NOT LARGE ENOUGH TO MAINTAIN ANNULAR RING REQUIREMENT, MFR. MAY REQUEST APPROVAL TO TEAR DROP PADS TO MAINTAIN ANNULAR RING. (AT PAD TO TRACE INTERSECTION ONLY AND ELECTRICAL INTEGRITY MUST BE MAINTAINED.)
- THIEVING MAY BE ADDED TO COMPENSATE FOR LOW COPPER DENSITY AREAS ON THIS DESIGN ONLY AFTER REVIEW AND APPROVAL FROM THE CUSTOMER:
 - THIEVING TO CARD EDGE, FIDUCIALS, NON-PLATED THROUGH HOLES, ALL OTHER FEATURES TO BE 0.200 INCH MINIMUM.
 - THERE SHALL BE NO THIEVING IN ANY AREAS FREE OF SOLDER MASK OR INTERNAL COPPER PLANES.
- MFGR. TO LEGIBLY ETCH OR STAMP/SCREEN WITH PERMANENT NON-CONDUCTIVE INK ON SECONDARY SIDE IN A CLEAR AREA UNLESS OTHERWISE INDICATED;
 - U.L. CODE-FLAMMABILITY RATING
 - DATE CODE (STAMP).
 - LOT NUMBER
 - MFGR LOGO
 - SUCCESSFUL ELECTRICAL TEST.

PRIMARY SIDE

UNLESS OTHERWISE SPECIFIED DIMENSIONS ARE IN INCHES TOLERANCES DECIMALS FRACTIONS ANGLES .XX .010 .1/32 .1 .XXX .005 .1/32 .1 .XXXX .0050 .1/32 .1	APPROVAL	DATE	<div><div>RFMG DIVISION 804 WOBURN STREET WILMINGTON, MA 01887</div></div> <div>TITLE FABRICATION LTC4306-PMDZ EVAL BD</div>			
MATERIAL						
FINISH	DESIGNER V.GUTBIER	21MAR19	SIZE	FSCM NO	DRAWING NUMBER	REV
	P10-ENGINEER J.NASO	21MAR19	D	24355	09-055748	B1
DO NOT SCALE DWG			SCALE	1/1	SHEET 1 OF 1	