

REVISIONS			
REV	DESCRIPTION	DATE	APPROVED
A	INITIAL RELEASE	15JUN20	E. REYTA

**SPECIFICATIONS:**

**ROHS COMPLIANCE NOTE:** HOMOGENOUS MATERIALS IN THIS BOARD SHALL BE COMPLIANT THE EU RoHS DIRECTIVE 2002/95/EC

**MATERIALS;** ALL LAMINATES AND BONDING MATERIALS SHOULD BE SELECTED FROM IPC-4101 OR IPC-4103, MINIMUM Tg>170degC, Td>300degC, U.L. RATING OF 94 V-0

**MATERIAL FAMILY;** S1000-2 OR IT180

**CLADDING;** EXTERNAL LAYERS .5 OZ. COPPER, OVERPLATE TO 1.5 OZ. INTERNAL SIGNAL LAYERS .5 OZ. COPPER. INTERNAL PLANE LAYERS 1 OZ. COPPER.  
NOTE: IF THE LAYER STACKUP CONFLICTS WITH THE ABOVE CLADDING SPECIFICATIONS THEN THE LAYER STACKUP SHALL TAKE PRECEDENCE.

**SOLDER MASK;** SHALL BE LIQUID PHOTOIMAGEABLE (LPI) APPLIED ON BOTH SIDES OVER BARE COPPER OR GOLD AND SHALL MEET IPC-SM-840 (LATEST REV.) CLASS 3, COLOR GREEN.

**SILK SCREEN;** SHALL BE PERMANENT NON-CONDUCTIVE EPOXY INK, COLOR: WHITE SYNTHETIC INKJET PRINTING ALLOWED FOR DENSE BOARDS, COLOR: WHITE

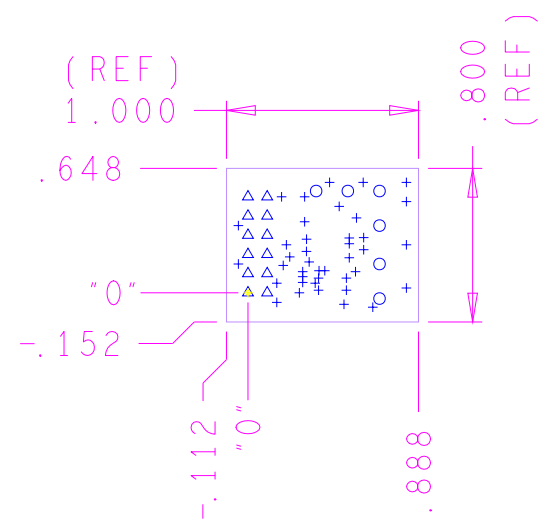
**SURFACE FINISH;** ENIG (ELECTROLESS NICKEL/IMMERSION GOLD) PER IPC-4552 LATEST REVISION

**INTENTIONAL SHORTS;** IF SUPPLIED DATA INCLUDES A FILE "READ\_ME.2", THEN INTENTIONAL NET SHORTS EXIST. CUSTOMER REVIEW AND APPROVAL IS REQUIRED IF SUPPLIED DATA REPORTS ANY CONDITION THAT DOES NOT MATCH "READ\_ME.2" FILE PROVIDED.

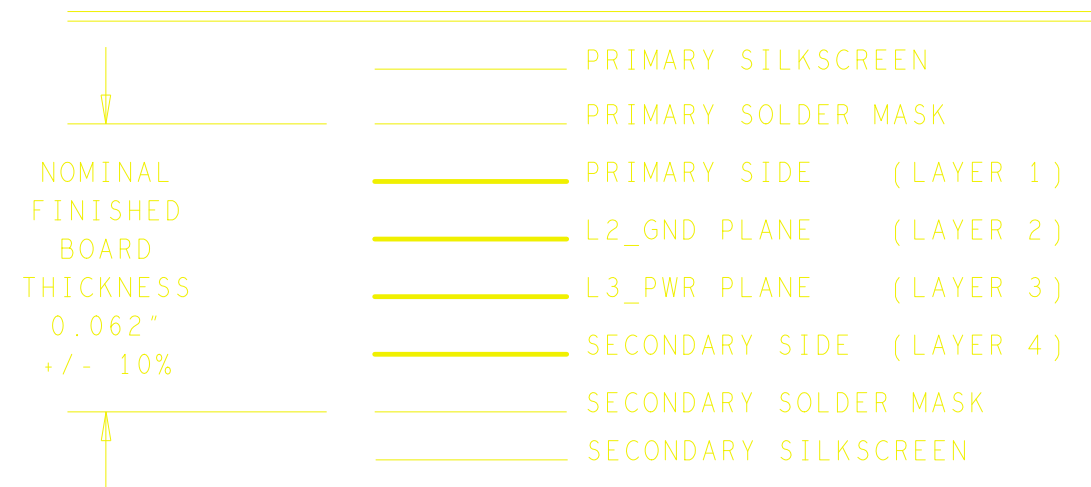
**TEST REQUIREMENTS;** 100% NETLIST ELECTRICAL VERIFICATION USING CUSTOMER SUPPLIED IPC-D-356 NETLIST FOR OPENS AND SHORTS WHEN "GERBER DATA" IS PROVIDED. THIS VERIFICATION ALSO REQUIRED FOR "ODB++" DATA PER EMBEDDED NETLIST.

**REQUIREMENTS:**

- REFER TO IPC-6010 SERIES (LATEST REV.), CLASS 2 FOR FABRICATION UNLESS OTHERWISE SPECIFIED.
- ACCEPTABILITY PER ANALOG DEVICES, INC. SPECIFICATION TST00115, (LATEST REVISION.)
- MODIFICATIONS TO THE ARTWORK ARE NOT ALLOWED WITHOUT WRITTEN AUTHORIZATION.
- HOLE PATTERN TOLERANCES FOR UNDIMENSIONED HOLES SHALL BE A DIAMETER OF 0.005 INCHES FROM THEIR TRUE POSITION.
- PLATED HOLE WALL THICKNESS SHALL NOT BE LESS THAN 0.001 INCH MINIMUM AVERAGE, WITH NO READING LESS THAN .0008 BY CROSS SECTION.
- HOLE DIAMETERS APPLY AFTER PLATING.
- FINISHED CONDUCTOR WIDTHS SHALL NOT BE REDUCED FROM THE NOMINAL INDICATED ON THE MASTER PATTERN, BY MORE THAN THE CONDUCTOR THICKNESS.
- MINIMUM DESIGN LINE WIDTH IS .008 INCH.
- MINIMUM DESIGN SPACING IS .008 INCH.
- ~~NON-FUNCTIONAL PAD REMOVAL FROM INNER SIGNAL LAYERS MAY BE PERFORMED AFTER CUSTOMER APPROVAL.~~
- IF PAD SIZES PROVIDED ARE NOT LARGE ENOUGH TO MAINTAIN ANNULAR RING REQUIREMENT, MFR. MAY REQUEST APPROVAL TO TEAR DROP PADS TO MAINTAIN ANNULAR RING. (AT PAD TO TRACE INTERSECTION ONLY AND ELECTRICAL INTEGRITY MUST BE MAINTAINED.)
- THIEVING MAY BE ADDED TO COMPENSATE FOR LOW COPPER DENSITY AREAS ON THIS DESIGN ONLY AFTER REVIEW AND APPROVAL FROM THE CUSTOMER:
  - A. THIEVING TO CARD EDGE, FIDUCIALS, NON-PLATED THROUGH HOLES, ALL OTHER FEATURES TO BE 0.200 INCH MINIMUM.
  - B. THERE SHALL BE NO THIEVING IN ANY AREAS FREE OF SOLDER MASK OR INTERNAL COPPER PLANES.
- MFR. TO LEGIBLY ETCH OR STAMP/SCREEN WITH PERMANENT NON-CONDUCTIVE INK ON SECONDARY SIDE IN A CLEAR AREA UNLESS OTHERWISE INDICATED;
  - A. U.L. CODE-FLAMMABILITY RATING
  - B. DATE CODE (STAMP).
  - C. LOT NUMBER
  - D. MFR LOGO
  - E. SUCCESSFUL ELECTRICAL TEST.
- REPAIRS PER IPC-7711/21 (LATEST REV.) ARE ALLOWED.
- BOARDS TO BE SHIPPED IN ARRAYS.



**4 LAYER STACKUP**



**HOLE TOLERANCE**  
UNLESS SPECIFIED  
PLATED: +/- 3 MILS

TOP to BOTTOM				
ALL UNITS ARE IN MILS				
FIGURE	SIZE	PLATED	QTY	TOLERANCE/NOTES
+	10.0	PLATED	40	DIA MAX
o	40.0	PLATED	6	
△	45.0	PLATED	12	

**PRIMARY SIDE**

UNLESS OTHERWISE SPECIFIED DIMENSIONS ARE IN INCHES TOLERANCES DECIMALS FRACTIONS ANGLES .XX -- .010 --1/32 -- 2 .XXX -- .005 .XXXX -- .0050	APPROVAL N/A	DATE N/A	WWM DIVISION 804 WOBURN STREET WILMINGTON, MA 01887			
	HARDWARE SERVICES M. VALE	15JUN20				
MATERIAL	HARDWARE SYSTEMS N/A	N/A	TITLE <b>FABRICATION</b> EVAL-ADXRS290-PMDZ CUSTOMER EVAL Z			
	TEST ENGINEER N/A	N/A				
	COMPONENT ENGINEER M. YAN	15JUN20				
FINISH	TEST PROCESS N/A	N/A	SIZE C	FSCM NO 24355	DRAWING NUMBER 09-065300	REV A
	HARDWARE RELEASE K. JABATAN	15JUN20				
	DESIGNER K. MOYO	15JUN20				
	PTD ENGINEER E. REYTA	15JUN20				
DO NOT SCALE DWG	CHECKER N/A	N/A	SCALE 1/1	SHEET 1 OF 1		

EVAL-ADXRS290-PMDZ CUSTOMER EVAL Z

4

3

2

1

REVISIONS			
REV	DESCRIPTION	DATE	APPROVED
A	INITIAL RELEASE	15JUN20	E. REYTA

D

D

C

C

B

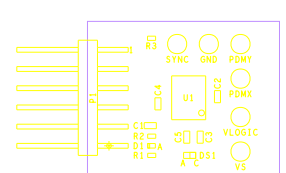
B

A


A

ASSEMBLY NOTES:

1. BOARD ACCEPTABILITY PER ANALOG DEVICES, INC. SPECIFICATION TST00119 (LATEST REVISION).
2. REPAIRS PER IPC-7711/21(LATEST REVISION) ARE ALLOWED.
3. RoHS COMPLIANCE: ASSEMBLY VENDOR SHOULD ASSURE COMPLIANCE WITH LEAD-FREE AND RoHS PCB ASSEMBLY STANDARDS (EU RoHS DIRECTIVE 2002/95/EC).
4. THIS BOARD CONTAINS ELECTROSTATIC DISCHARGE SENSITIVE DEVICES.
5. ASSEMBLED BOARDS TO BE SHIPPED SINGULATED.



PRIMARY SIDE

UNLESS OTHERWISE SPECIFIED DIMENSIONS ARE IN INCHES TOLERANCES DECIMALS FRACTIONS ANGLES .XX -- .010 --1/32 -- 2 .XXX -- .005 .XXXX -- .0050	APPROVAL	DATE	 <div style="text-align: right;"> WWM DIVISION 804 WOBURN STREET WILMINGTON, MA 01887 </div>			
	TEMPLATE ENGINEER N/A	N/A				
	HARDWARE SERVICES M. VALE	15JUN20				
	HARDWARE SYSTEMS N/A	N/A				
MATERIAL	TEST ENGINEER N/A	N/A	TITLE ASSEMBLY EVAL-ADXRS290-PMDZ CUSTOMER EVAL Z			
	COMPONENT ENGINEER M. YAN	15JUN20				
	TEST PROCESS N/A	N/A				
	HARDWARE RELEASE K. JABATAN	15JUN20				
FINISH	DESIGNER K. MOYO	15JUN20	SIZE	FSCM NO	DRAWING NUMBER	REV
	PTD ENGINEER E. REYTA	15JUN20	C	24355	01-065300	A
	CHECKER N/A	N/A	SCALE 1/1		SHEET 1 OF 1	

EVAL - ADXRS290 - PMDZ CUSTOMER EVAL Z

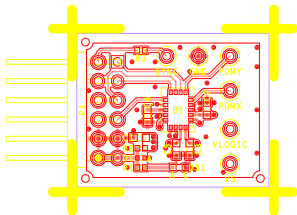
4

3

2

1

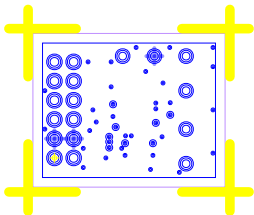
L1 PRIMARY  
08-065300-01  
REV A



L2 GND

08-065300-07

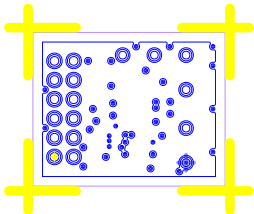
REV A



L3 PWR

08-065300-08

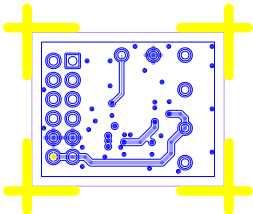
REV A



L4 SECONDARY

08-065300-02

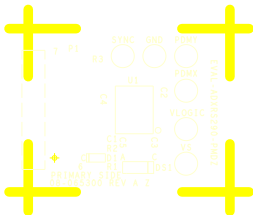
REV A



SILKSCREEN PRIMARY

08-065300-03

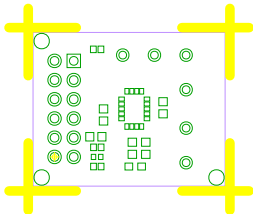
REV A



SOLDERMASK PRIMARY

08-065300-04

REV A

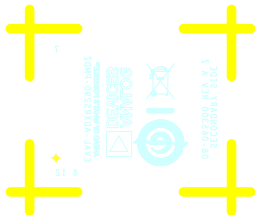




SILKSCREEN SECONDARY

08-065300-05

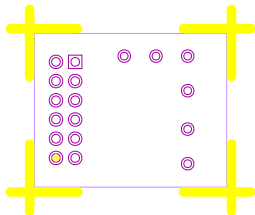
REV A



SOLDERMASK SECONDARY

08-065300-06

REV A



PASTEMASK PRIMARY

08-065300-09

REV A

