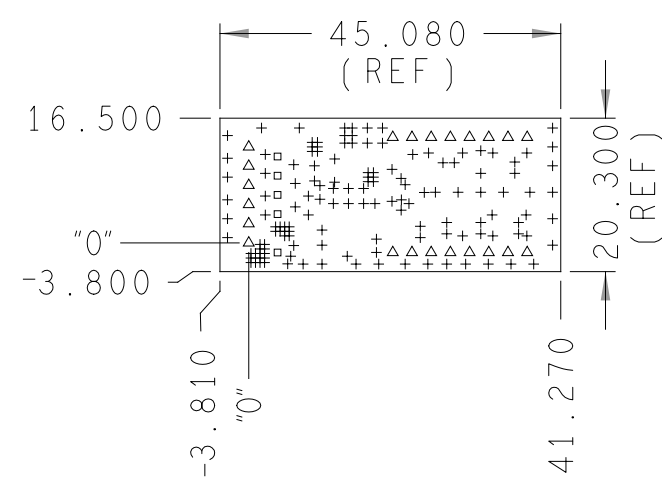



| REVISIONS |                        |         |            |
|-----------|------------------------|---------|------------|
| REV       | DESCRIPTION            | DATE    | APPROVED   |
| A         | INITIAL RELEASE        | 15AUG20 | T. CABILDO |
| B         | CHANGES PER ECR-103897 | 03AUG21 | Z. ARCEO   |



HOLE TOLERANCE  
UNLESS SPECIFIED  
PLATED: +/-0.0762MM

| DRILL CHART: TOP to BOTTOM   |       |        |     |                 |
|------------------------------|-------|--------|-----|-----------------|
| ALL UNITS ARE IN MILLIMETERS |       |        |     |                 |
| FIGURE                       | SIZE  | PLATED | QTY | TOLERANCE/NOTES |
| +                            | 0.254 | PLATED | 140 | DIA MAX         |
| □                            | 0.889 | PLATED | 5   |                 |
| △                            | 1.143 | PLATED | 22  |                 |

PRIMARY SIDE

|   |                                      |             |  |                  |                             |          |
|---|--------------------------------------|-------------|--|------------------|-----------------------------|----------|
| UNLESS OTHERWISE SPECIFIED<br>DIMENSIONS ARE IN MM<br>TOLERANCES<br>DECIMALS FRACTIONS ANGLES<br>.XX -.254 --1/32 --2<br>.XXX -.127<br>.XXXX -.1270 | APPROVAL<br>TEMPLATE ENGINEER<br>N/A | DATE<br>N/A |  <div style="display: inline-block; vertical-align: middle; margin-left: 10px;"> WWM<br/>DIVISION<br/>804 WOBURN STREET<br/>WILMINGTON, MA 01887 </div> |                  |                             |          |
|   | HARDWARE SERVICES<br>M. VALE         | 15AUG20     |  |                  |                             |          |
| MATERIAL  | HARDWARE SYSTEMS<br>N/A              | N/A         | TITLE<br>FABRICATION<br>EVAL-CN0552-PMDZ<br>CUSTOMER EVALUATION Z  |                  |                             |          |
|   | TEST ENGINEER<br>N/A                 | N/A         |  |                  |                             |          |
|   | COMPONENT ENGINEER<br>A. CAUILAN     | 15AUG20     |  |                  |                             |          |
| FINISH  | TEST PROCESS<br>N/A                  | N/A         | SIZE<br>C  | FSCM NO<br>24355 | DRAWING NUMBER<br>09-065434 | REV<br>B |
|   | HARDWARE RELEASE<br>K. JABATAN       | 15AUG20     |  |                  |                             |          |
|   | DESIGNER<br>M. NICOPIOR              | 15AUG20     |  |                  |                             |          |
|   | PTD ENGINEER<br>T. CABILDO           | 15AUG20     |  |                  |                             |          |
| DO NOT SCALE DWG  | CHECKER<br>N/A                       | N/A         | SCALE<br>1/1   | SHEET 1 OF 2     |                             |          |

4 | 3 | 2 | 1

SPECIFICATIONS:

ROHS COMPLIANCE NOTE: HOMOGENOUS MATERIALS IN THIS BOARD SHALL BE COMPLIANT THE EU ROHS DIRECTIVE 2002/95/EC

MATERIALS: ALL LAMINATES AND BONDING MATERIALS SHOULD BE SELECTED FROM IPC-4101 OR IPC-4103, MINIMUM Tg>170degC, Td>300degC, U.L. RATING OF 94 V-0

MATERIAL FAMILY: ISOLA 370HR OR EQUIVALENT

CLADDING: EXTERNAL LAYERS .5 OZ. COPPER, OVERPLATE TO 1.5 OZ.  
~~INTERNAL SIGNAL LAYERS .5 OZ. COPPER.~~  
 INTERNAL PLANE LAYERS 1 OZ. COPPER.

NOTE: IF THE LAYER STACKUP CONFLICTS WITH THE ABOVE CLADDING SPECIFICATIONS THEN THE LAYER STACKUP SHALL TAKE PRECEDENCE.

SOLDER MASK: SHALL BE LIQUID PHOTOIMAGEABLE (LPI) APPLIED ON BOTH SIDES OVER BARE COPPER OR GOLD AND SHALL MEET IPC-SM-840 (LATEST REV.) CLASS 3. COLOR GREEN.

SILK SCREEN: SHALL BE PERMANENT NON-CONDUCTIVE EPOXY INK, COLOR: WHITE SYNTHETIC INKJET PRINTING ALLOWED FOR DENSE BOARDS, COLOR: WHITE

SURFACE FINISH: ENIG (ELECTROLESS NICKEL/IMMERSION GOLD) PER IPC-4552 LATEST REVISION

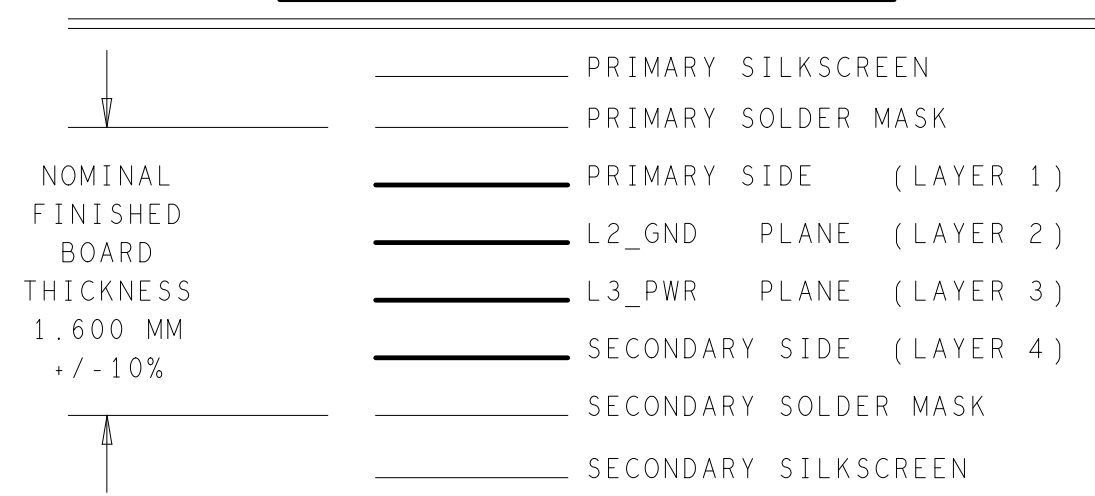
INTENTIONAL SHORTS: IF SUPPLIED DATA INCLUDES A FILE "READ\_ME.2", THEN INTENTIONAL NET SHORTS EXIST. CUSTOMER REVIEW AND APPROVAL IS REQUIRED IF SUPPLIED DATA REPORTS ANY CONDITION THAT DOES NOT MATCH "READ\_ME.2" FILE PROVIDED.

TEST REQUIREMENTS: 100% NETLIST ELECTRICAL VERIFICATION USING CUSTOMER SUPPLIED IPC-D-356 NETLIST FOR OPENS AND SHORTS WHEN "GERBER DATA" IS PROVIDED. THIS VERIFICATION ALSO REQUIRED FOR "ODB++" DATA PER EMBEDDED NETLIST.

REQUIREMENTS:

1. REFER TO IPC-6010 SERIES (LATEST REV.), CLASS 2 FOR FABRICATION UNLESS OTHERWISE SPECIFIED.
2. ACCEPTABILITY PER ANALOG DEVICES, INC. SPECIFICATION TST00115. (LATEST REVISION.)
3. MODIFICATIONS TO THE ARTWORK ARE NOT ALLOWED WITHOUT WRITTEN AUTHORIZATION.
4. HOLE PATTERN TOLERANCES FOR UNDIMENSIONED HOLES SHALL BE A DIAMETER OF 0.127 MM FROM THEIR TRUE POSITION.
5. PLATED HOLE WALL THICKNESS SHALL NOT BE LESS THAN 0.0254MM MINIMUM AVERAGE, WITH NO READING LESS THAN .02032MM BY CROSS SECTION.
6. HOLE DIAMETERS APPLY AFTER PLATING.
7. FINISHED CONDUCTOR WIDTHS SHALL NOT BE REDUCED FROM THE NOMINAL INDICATED ON THE MASTER PATTERN, BY MORE THAN THE CONDUCTOR THICKNESS.
8. MINIMUM DESIGN LINE WIDTH IS .200 MM.
9. MINIMUM DESIGN SPACING IS .100 MM.
10. ~~NON FUNCTIONAL PAD REMOVAL FROM INNER SIGNAL LAYERS MAY BE PERFORMED AFTER CUSTOMER APPROVAL.~~
11. IF PAD SIZES PROVIDED ARE NOT LARGE ENOUGH TO MAINTAIN ANNULAR RING REQUIREMENT, MFGR. MAY REQUEST APPROVAL TO TEAR DROP PADS TO MAINTAIN ANNULAR RING. (AT PAD TO TRACE INTERSECTION ONLY AND ELECTRICAL INTEGRITY MUST BE MAINTAINED.)
12. THIEVING MAY BE ADDED TO COMPENSATE FOR LOW COPPER DENSITY AREAS ON THIS DESIGN ONLY AFTER REVIEW AND APPROVAL FROM THE CUSTOMER:
  - A. THIEVING TO CARD EDGE, FIDUCIALS, NON-PLATED THROUGH HOLES, ALL OTHER FEATURES TO BE 5.080 MM MINIMUM.
  - B. THERE SHALL BE NO THIEVING IN ANY AREAS FREE OF SOLDER MASK OR INTERNAL COPPER PLANES.
13. MFGR. TO LEGIBLY ETCH OR STAMP/SCREEN WITH PERMANENT NON-CONDUCTIVE INK ON SECONDARY SIDE IN A CLEAR AREA UNLESS OTHERWISE INDICATED:
  - A. U.L. CODE-FLAMMABILITY RATING
  - B. DATE CODE (STAMP).
  - C. LOT NUMBER
  - D. MFGR LOGO
  - E. SUCCESSFUL ELECTRICAL TEST.
14. REPAIRS PER IPC-7711/21 (LATEST REV.) ARE ALLOWED.
15. BOARDS TO BE SHIPPED IN ARRAYS.
16. PANEL TO BE SUBJECTED TO CUSTOMER'S APPROVAL.
17. PANELED SOLDER PASTE STENCIL SHOULD BE SENT TO THE CUSTOMER.

4 LAYER STACKUP



PRIMARY SIDE

|           |  |   |               |
|-----------|--|---|---------------|
|           |  | WWM DIVISION<br>804 WOBURN STREET<br>WILMINGTON, MA 01887 |               |
|           |  | SIZE C  | FSCM NO 24355 |
| SCALE 1/1 |  | SHEET 2 OF 2  |               |

4 | 3 | 2 | 1

4

3

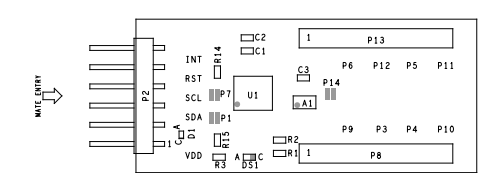
2

1


| REVISIONS |                        |         |            |
|-----------|------------------------|---------|------------|
| REV       | DESCRIPTION            | DATE    | APPROVED   |
| A         | INITIAL RELEASE        | 15AUG20 | T. CABILDO |
| B         | CHANGES PER ECR-103897 | 03AUG21 | Z. ARCEO   |

ASSEMBLY NOTES:

1. BOARD ACCEPTABILITY PER ANALOG DEVICES, INC. SPECIFICATION TST00119 (LATEST REVISION).
2. REPAIRS PER IPC-7711/21(LATEST REVISION) ARE ALLOWED.
3. REPAIRS ARE NOT ALLOWED IN SOLDERMASK FREE AREAS ON EITHER SIDE OF THE BOARD.
4. RoHS COMPLIANCE: ASSEMBLY VENDOR SHOULD ASSURE COMPLIANCE WITH LEAD-FREE AND RoHS PCB ASSEMBLY STANDARDS (EU RoHS DIRECTIVE 2002/95/EC).
5. ASSEMBLY VENDOR MUST SOLDER SHORT ON DEFAULT POSITION PIN 1 & 2 OF COMPONENT P7, P1 & P14.
6. ASSEMBLED BOARDS TO BE SHIPPED SINGULATED.
7. SMOOTHEN EDGES AND FREE FROM BURS AFTER DEPANIZATION.



PRIMARY SIDE

|  |                                      |             |  |                  |                             |          |
|--|--------------------------------------|-------------|--|------------------|-----------------------------|----------|
| UNLESS OTHERWISE SPECIFIED<br>DIMENSIONS ARE IN MM<br>TOLERANCES<br>DECIMALS .XX -.254<br>.XXX -.127<br>.XXXX -.1270<br>FRACTIONS --1/32<br>ANGLES --2 | APPROVAL<br>TEMPLATE ENGINEER<br>N/A | DATE<br>N/A |  WWM<br>DIVISION<br>804 WOBURN STREET<br>WILMINGTON, MA 01887 |                  |                             |          |
|  | HARDWARE SERVICES<br>M. VALE         | 15AUG20     |  |                  |                             |          |
| MATERIAL   | HARDWARE SYSTEMS<br>N/A              | N/A         | TITLE<br>ASSEMBLY<br>EVAL - CN0552 - PMDZ<br>CUSTOMER EVALUATION Z   |                  |                             |          |
|  | TEST ENGINEER<br>N/A                 | N/A         |  |                  |                             |          |
|  | COMPONENT ENGINEER<br>A. CAUILAN     | 15AUG20     |  |                  |                             |          |
|  | TEST PROCESS<br>N/A                  | N/A         |  |                  |                             |          |
| FINISH   | HARDWARE RELEASE<br>K. JABATAN       | 15AUG20     | SIZE<br>C  | FSCM NO<br>24355 | DRAWING NUMBER<br>01-065434 | REV<br>B |
|  | DESIGNER<br>M. NICOPIOR              | 15AUG20     |  |                  |                             |          |
|  | PTD ENGINEER<br>T. CABILDO           | 15AUG20     |  |                  |                             |          |
| DO NOT SCALE DWG   | CHECKER<br>N/A                       | N/A         | SCALE<br>1/1   | SHEET 1 OF 1     |                             |          |

4

3

2

1

D

D

C

C

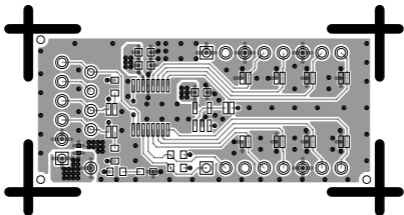
B

B

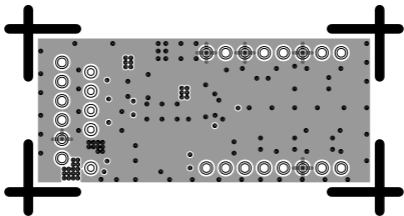
A

A

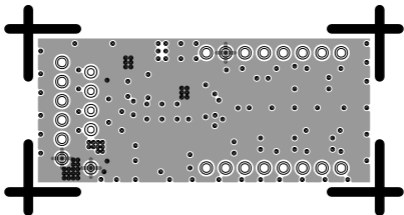
L1 PRIMARY  
08-065434-01  
REV B



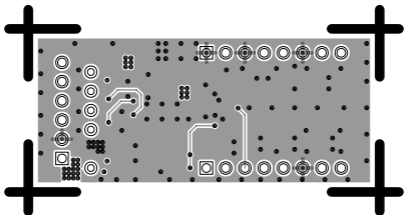
L2 GND  
08-065434-07  
REV B



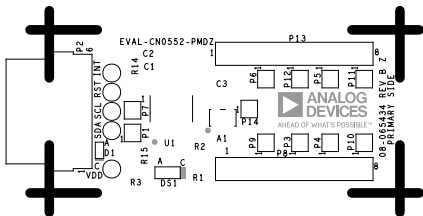
L3 PWR  
08-065434-08  
REV B



L4 SECONDARY  
08-065434-02  
REV B



SILKSCREEN PRIMARY  
08-065434-03  
REV B

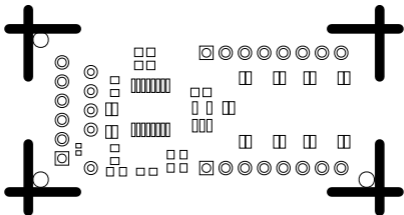




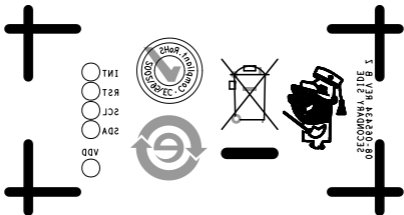
SOLDERMASK PRIMARY

08-065434-04

REV B



SILKSCREEN SECONDARY  
08-065434-05  
REV B



SOLDERMASK SECONDARY

08-065434-06

REV B



PASTEMASK PRIMARY

08-065434-09

REV B

