

SOFTWARE INSTALLATION

INSTALLING THE SYSTEM DEMONSTRATION PLATFORM DRIVERS

If you have not installed the System Demonstration Platform (SDP) drivers already, you need to download and install it first before installing the ADMX1002 GUI. Click on the following link to download the latest version of the SDP driver installer.

<http://swdownloads.analog.com/ACE/SDP/SDPDrivers.exe>

To install the EVAL-SDP-CB1Z or EVAL-SDP-S SDP board drivers, take the following steps:

1. With the EVAL-SDP-CB1Z or EVAL-SDP-S SDP board still disconnected from the USB port of the PC, ensure that all other applications are closed, and then click **Next** (see Figure 1).

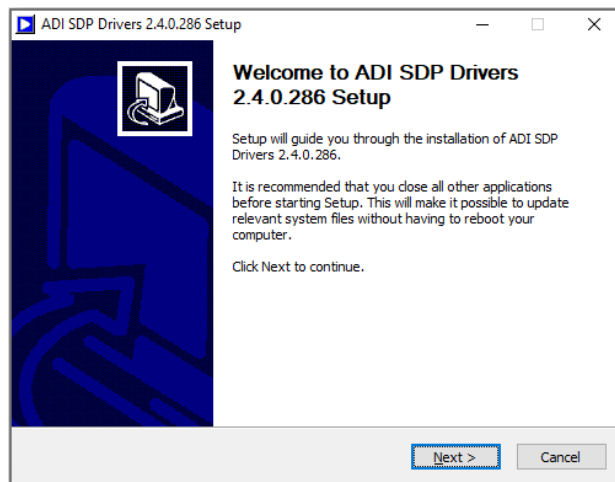


Figure 1. Beginning the Drivers Installation

2. Accept the license agreement and click on the Next button (see Figure 2).

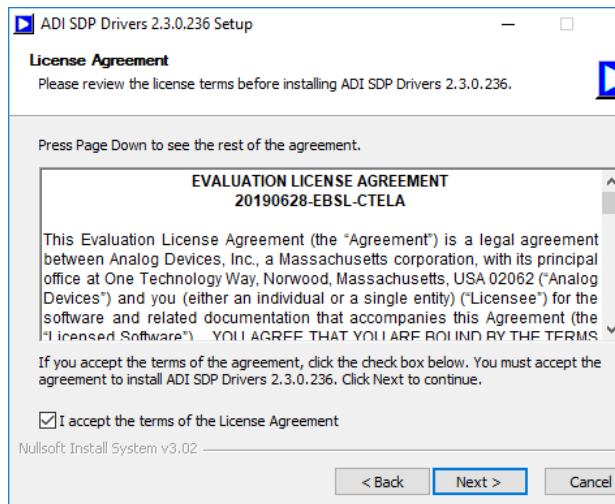


Figure 2. Accept License Agreement

3. Select the location to install the drivers and click **Next** (see Figure).

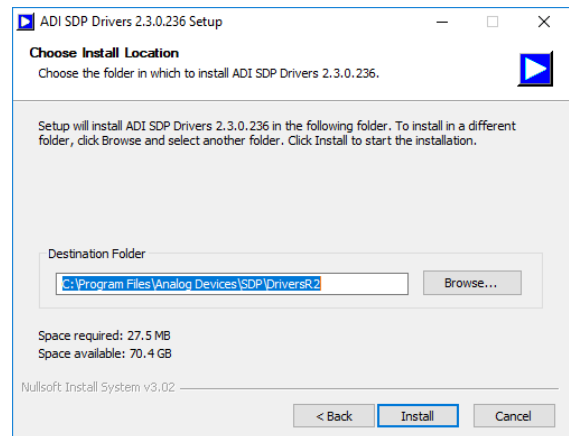


Figure 3. Selecting the Location for the Drivers Installation

4. Click on the Install button to install the driver (see Figure).

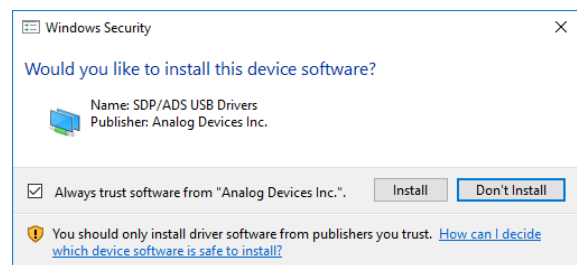


Figure 4. Granting Permission to Install Drivers

5. To complete the driver installation, click Close, which closes the installation wizard (see Figure).

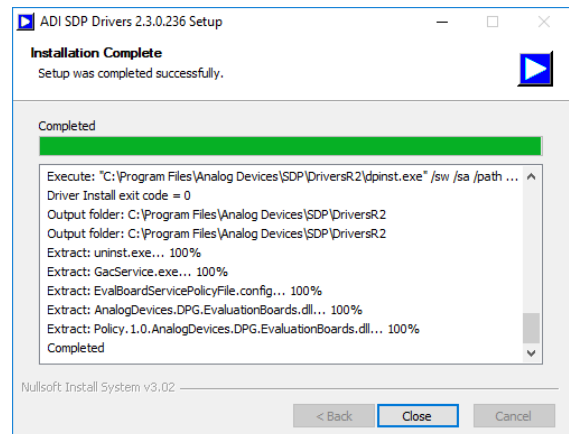


Figure 5. Completing the Drivers Setup Wizard