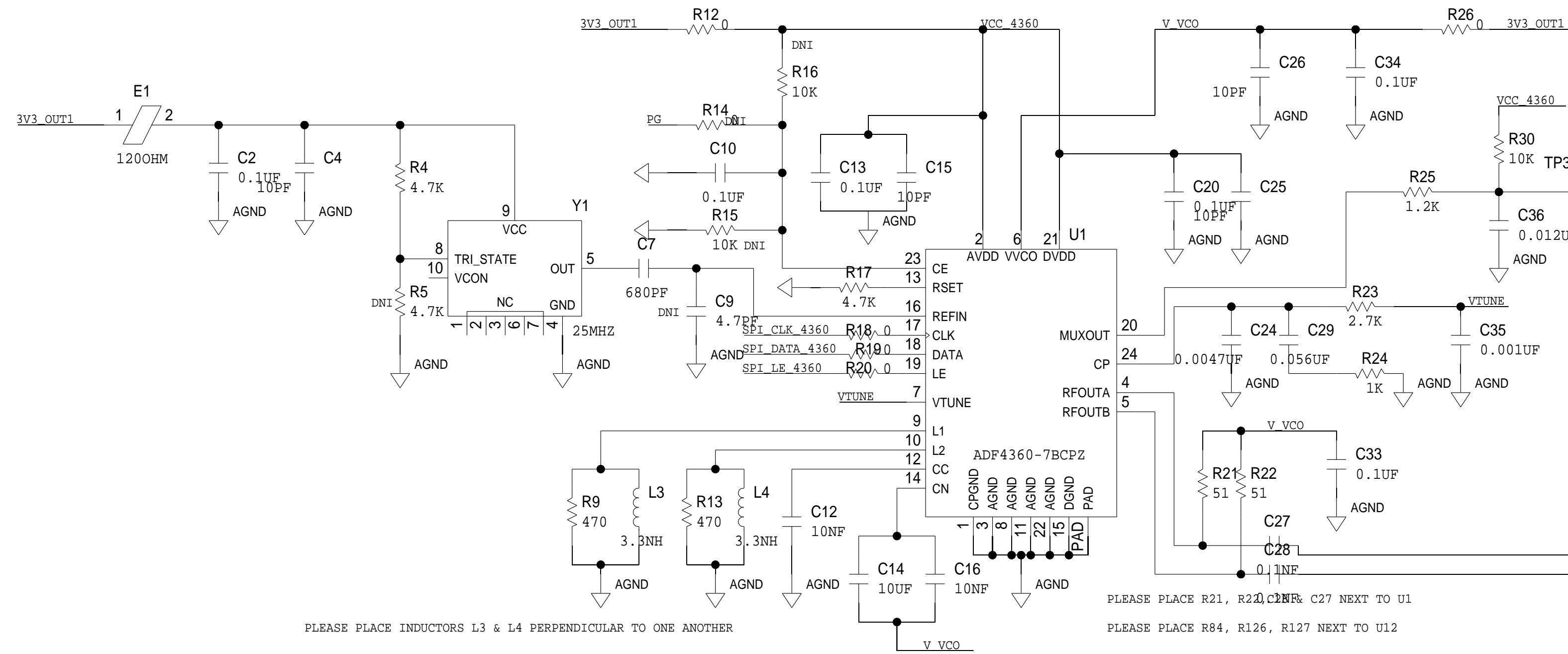
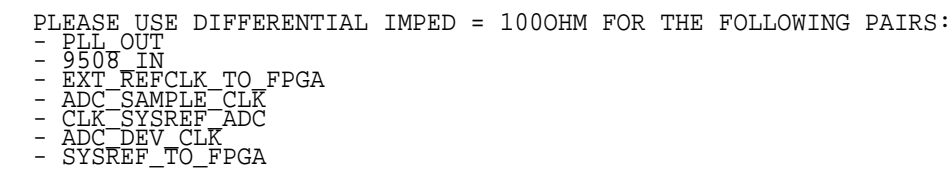


8		7		6		5		4		3		2		1																																																																																																	
D	<div>THIS DRAWING IS THE PROPERTY OF ANALOG DEVICES INC. IT IS NOT TO BE REPRODUCED OR COPIED, IN WHOLE OR IN PART, OR USED IN FURNISHING INFORMATION TO OTHERS, OR FOR ANY OTHER PURPOSE DETRIMENTAL TO THE INTERESTS OF ANALOG DEVICES. THE EQUIPMENT SHOWN HEREON MAY BE PROTECTED BY PATENTS OWNED OR CONTROLLED BY ANALOG DEVICES.</div>					<div>JUMPER TABLE</div> <table><tr><td>JP#</td><td>ON</td><td>OFF</td></tr><tr><td>1</td><td></td><td></td></tr><tr><td>2</td><td></td><td></td></tr><tr><td>3</td><td></td><td></td></tr><tr><td>4</td><td></td><td></td></tr><tr><td>5</td><td></td><td></td></tr></table>			JP#	ON	OFF	1			2			3			4			5													REVISIONS																																																																										
									JP#	ON	OFF																																																																																																				
									1																																																																																																						
2																																																																																																															
3																																																																																																															
4																																																																																																															
5																																																																																																															
REV	DESCRIPTION			DATE	APPROVED																																																																																																										
A	INITIAL RELEASE			21JAN19	A. COZMA																																																																																																										
C	RELAY CONTROL CHART																																																																																																														
	CONTROL	CODE	DEVICE	FUNCTION	CONNECTOR																																																																																																										
	B																																																																																																														
A																																																																																																															
	P.O SPEC.		BK/BD SPEC.		SOCKET OEM																						OEM PART#		HANDLER		<table><tr><td colspan="2">TEMPLATE ENGINEER N/A</td><td colspan="2">DATE</td><td colspan="4" rowspan="2">SCHEMATIC</td><td colspan="2" rowspan="2"></td></tr><tr><td colspan="2">HARDWARE SERVICES R. MACDONALD</td><td colspan="2">21JAN19</td></tr><tr><td colspan="2">HARDWARE SYSTEMS N/A</td><td colspan="2"></td><td colspan="8" rowspan="2">HW TYPE : Customer Evaluation Z Product(s): AD9694 : AD-LIDARDAQ1-EBZ PACKAGE : N/A-lead N/A N/A-family : Pitch-pitch StyleVendor Style</td></tr><tr><td colspan="2">TEST ENGINEER N/A</td><td colspan="2"></td></tr><tr><td colspan="2">COMPONENT ENGINEER A. CAUILAN</td><td colspan="2">21JAN19</td><td colspan="8" rowspan="2"><User Define> <User Define> <User Define></td></tr><tr><td colspan="2">TEST PROCESS N/A</td><td colspan="2"></td></tr><tr><td colspan="2">HARDWARE RELEASE K. JABATAN</td><td colspan="2">21JAN19</td><td colspan="8" rowspan="2">MASTER PROJECT TEMPLATE TBD</td><td colspan="2">TESTER TEMPLATE no_template</td><td colspan="2" rowspan="2">DRAWING NO. 02_054649</td><td colspan="2" rowspan="2">REV. B</td></tr><tr><td colspan="2">DESIGNER M. JOSE</td><td colspan="2">21JAN19</td></tr><tr><td colspan="2">PTD ENGINEER A. COZMA</td><td colspan="2">21JAN19</td><td colspan="8" rowspan="2">UNLESS OTHERWISE SPECIFIED DIMENSIONS ARE IN INCHES TOLERANCES DECIMALS FRACTIONS ANGLES X.XX +0.010 +-1/32 +-2 X.XXX +-0.005</td><td colspan="2">SIZE D</td><td colspan="2">SCALE 1:1</td><td colspan="2">CODE ID NO. CodeID</td><td colspan="2">SHEET 1 OF 9</td></tr><tr><td colspan="2">CHECKER N/A</td><td colspan="2"></td></tr></table>										TEMPLATE ENGINEER N/A		DATE		SCHEMATIC						HARDWARE SERVICES R. MACDONALD		21JAN19		HARDWARE SYSTEMS N/A				HW TYPE : Customer Evaluation Z Product(s): AD9694 : AD-LIDARDAQ1-EBZ PACKAGE : N/A-lead N/A N/A-family : Pitch-pitch StyleVendor Style								TEST ENGINEER N/A				COMPONENT ENGINEER A. CAUILAN		21JAN19		<User Define> <User Define> <User Define>								TEST PROCESS N/A				HARDWARE RELEASE K. JABATAN		21JAN19		MASTER PROJECT TEMPLATE TBD								TESTER TEMPLATE no_template		DRAWING NO. 02_054649		REV. B		DESIGNER M. JOSE		21JAN19		PTD ENGINEER A. COZMA		21JAN19
TEMPLATE ENGINEER N/A		DATE		SCHEMATIC																																																																																																											
HARDWARE SERVICES R. MACDONALD		21JAN19																																																																																																													
HARDWARE SYSTEMS N/A				HW TYPE : Customer Evaluation Z Product(s): AD9694 : AD-LIDARDAQ1-EBZ PACKAGE : N/A-lead N/A N/A-family : Pitch-pitch StyleVendor Style																																																																																																											
TEST ENGINEER N/A																																																																																																															
COMPONENT ENGINEER A. CAUILAN		21JAN19		<User Define> <User Define> <User Define>																																																																																																											
TEST PROCESS N/A																																																																																																															
HARDWARE RELEASE K. JABATAN		21JAN19		MASTER PROJECT TEMPLATE TBD								TESTER TEMPLATE no_template		DRAWING NO. 02_054649		REV. B																																																																																															
DESIGNER M. JOSE		21JAN19																																																																																																													
PTD ENGINEER A. COZMA		21JAN19		UNLESS OTHERWISE SPECIFIED DIMENSIONS ARE IN INCHES TOLERANCES DECIMALS FRACTIONS ANGLES X.XX +0.010 +-1/32 +-2 X.XXX +-0.005								SIZE D		SCALE 1:1		CODE ID NO. CodeID		SHEET 1 OF 9																																																																																													
CHECKER N/A																																																																																																															

CLOCKING FOR ADC / ADC DRIVERS

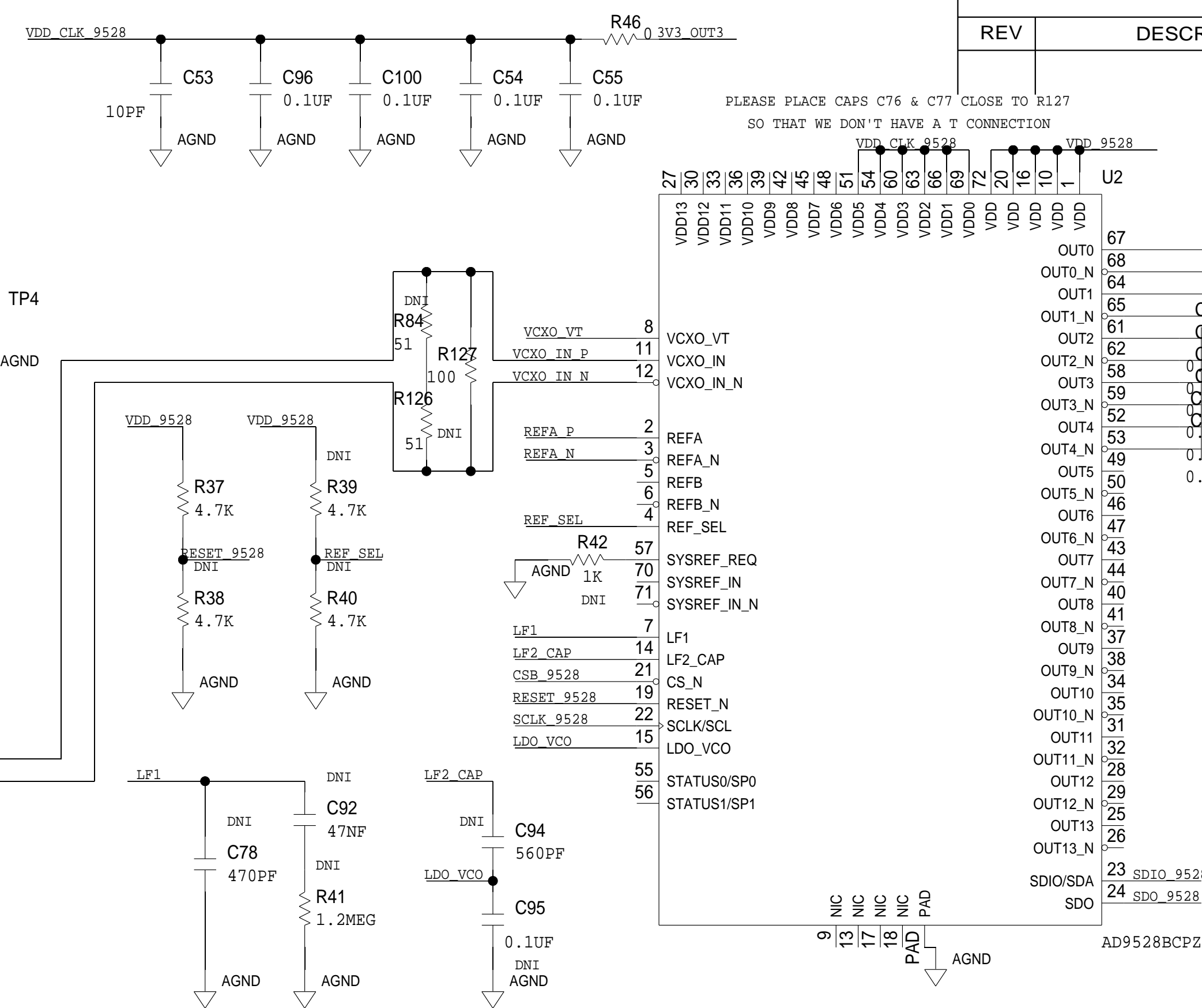
WT. LPR LTC6419IV#PBF (-40 ~ 85C)



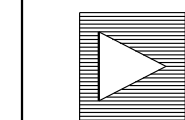
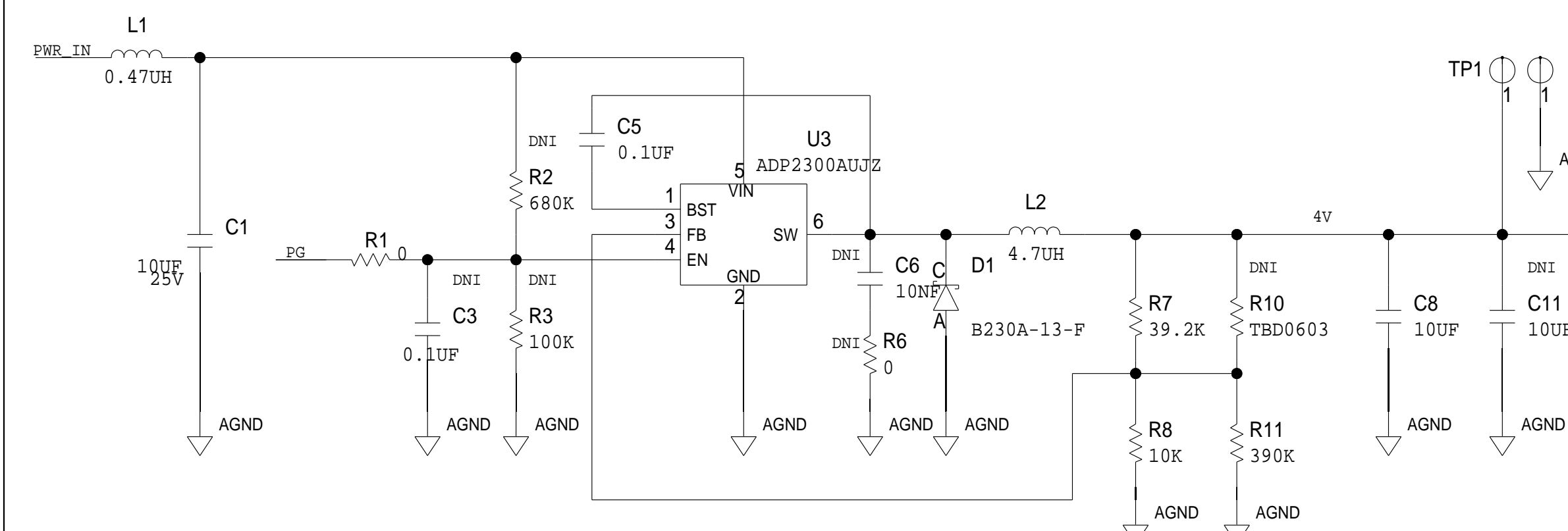
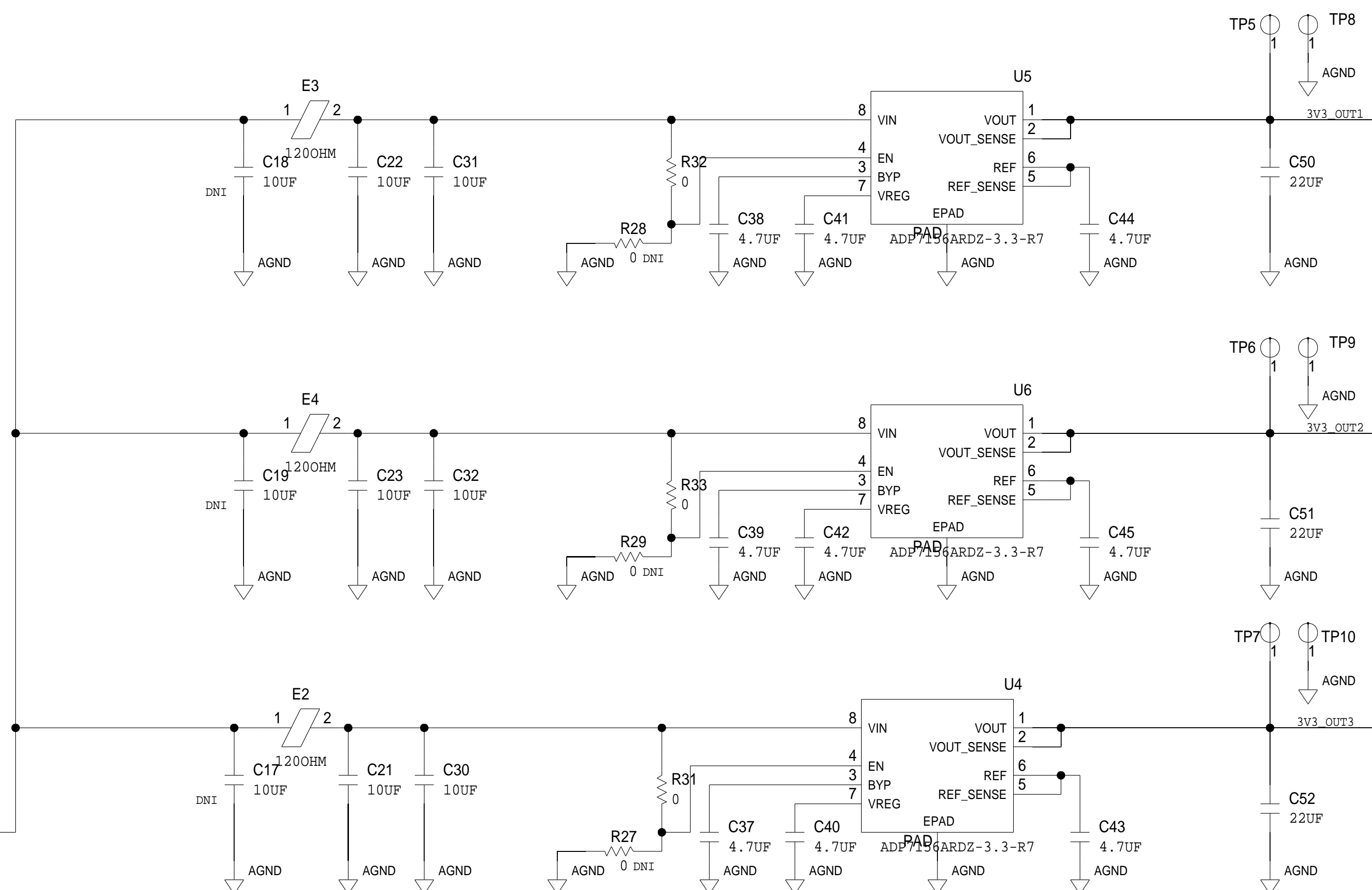
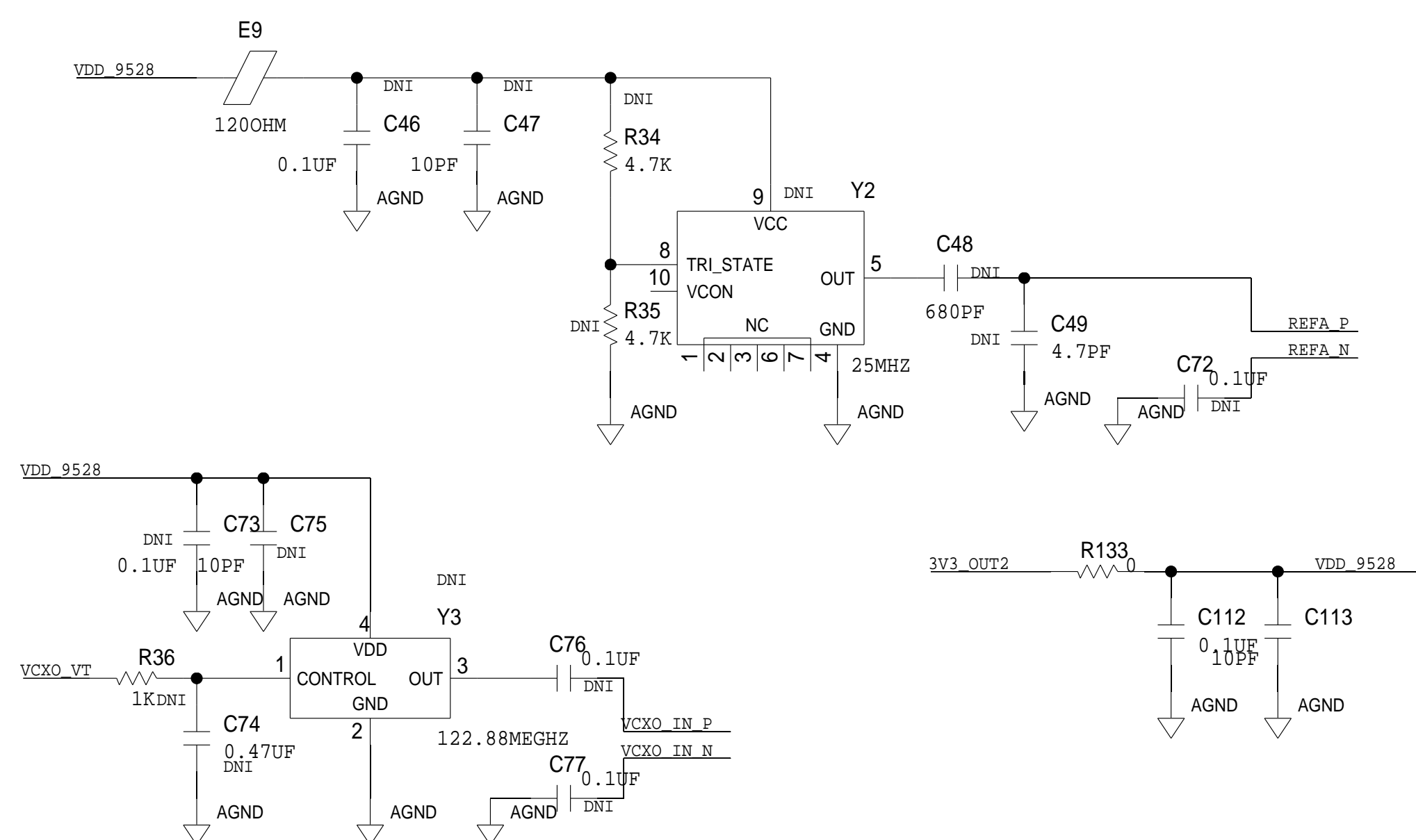
PLEASE PLACE INDUCTORS L3 & L4 PERPENDICULAR TO ONE ANOTHER

PLEASE PLACE R21, R22, C26 & C27 NEXT TO U

PLEASE PLACE R84, R126, R127 NEXT TO U12



REVISONS		
PTITION	DATE	APPROVED
<p>PLEASE PLACE Y2 & Y3 CLOSE TO U2</p> <p>PLEASE PLACE C112 & C113 CLOSE TO U2</p> <p>PLEASE LENGTH MATCH PAIRS</p> <p>ADC_SAMPLE_CLK & CLK_SYSREF_ADC</p> <p>ADC_DEV_CLK & SYSREF_TO_FPGA</p> <p>ADC_SAMPLE_CLK_P</p> <p>ADC_SAMPLE_CLK_N</p> <p>CLK_SYSREF_ADC_P</p> <p>CLK_SYSREF_ADC_N</p> <p>ADC_DEV_CLK_P</p> <p>ADC_DEV_CLK_N</p> <p>SYSREF_TO_FPGA_P</p> <p>SYSREF_TO_FPGA_N</p> <p>EXT_REFCLK_TO_FPGA+</p> <p>EXT_REFCLK_TO_FPGA-</p>		

ANALOG
DEVICES

THIS DRAWING IS THE PROPERTY OF ANALOG DEVICES INC.
IT IS NOT TO BE REPRODUCED OR COPIED, IN WHOLE OR
IN PART, OR USED IN FURNISHING INFORMATION TO OTHERS,
OR FOR ANY OTHER PURPOSE DETRIMENTAL TO THE INTERESTS
OF ANALOG DEVICES.
THE EQUIPMENT SHOWN HEREON MAY BE PROTECTED BY PATENT
OWNED OR CONTROLLED BY OWNED ANALOG DEVICES.

SCHEMATIC

```
HW TYPE      : Customer Evaluation Z
Product(s)   : AD9694
              : AD-LIDARDAQ1-EBZ
```

DESIGN VIEW
<DESIGN_VIEW>

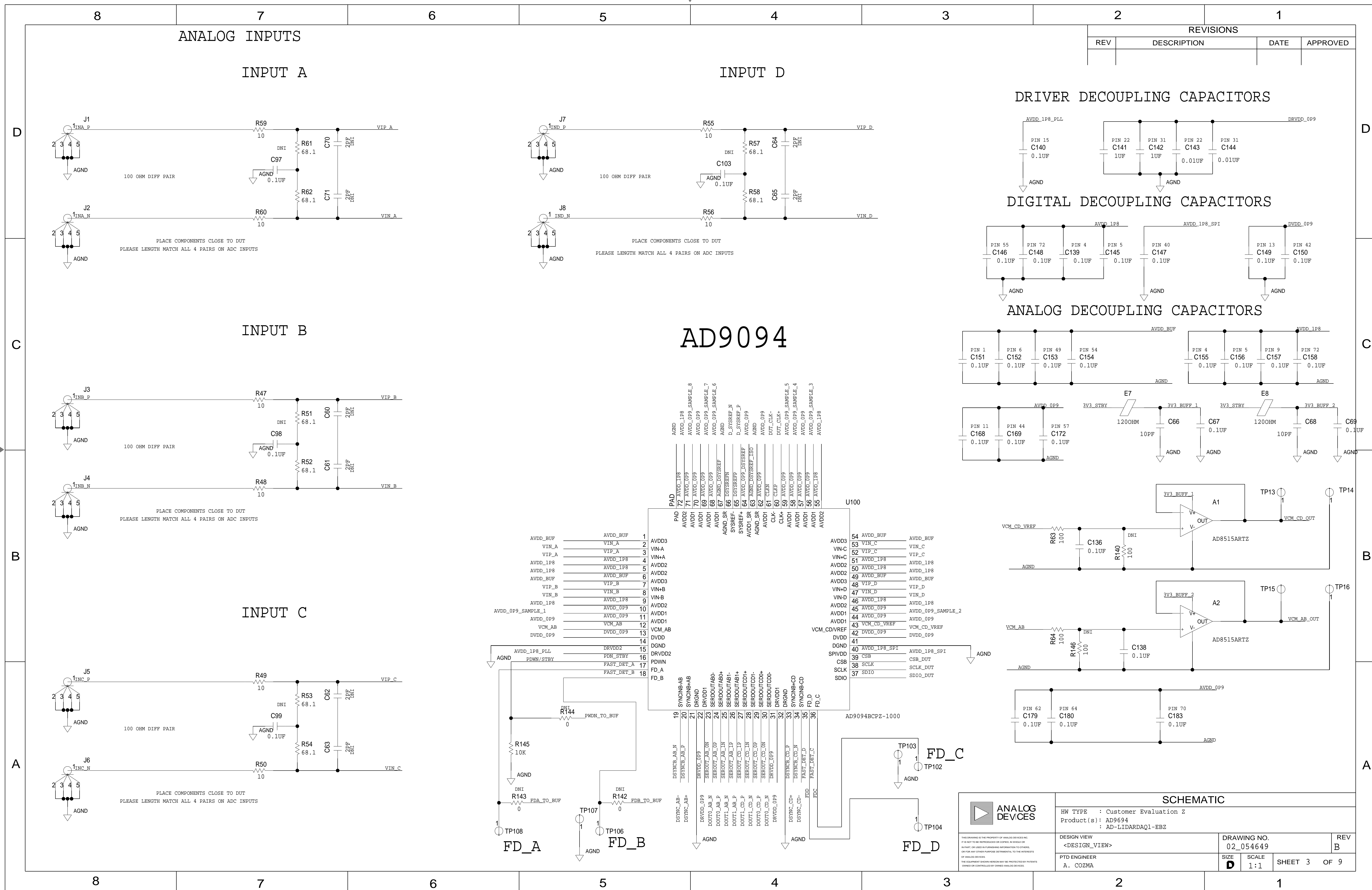
PTD ENGINEER
A. COZMA

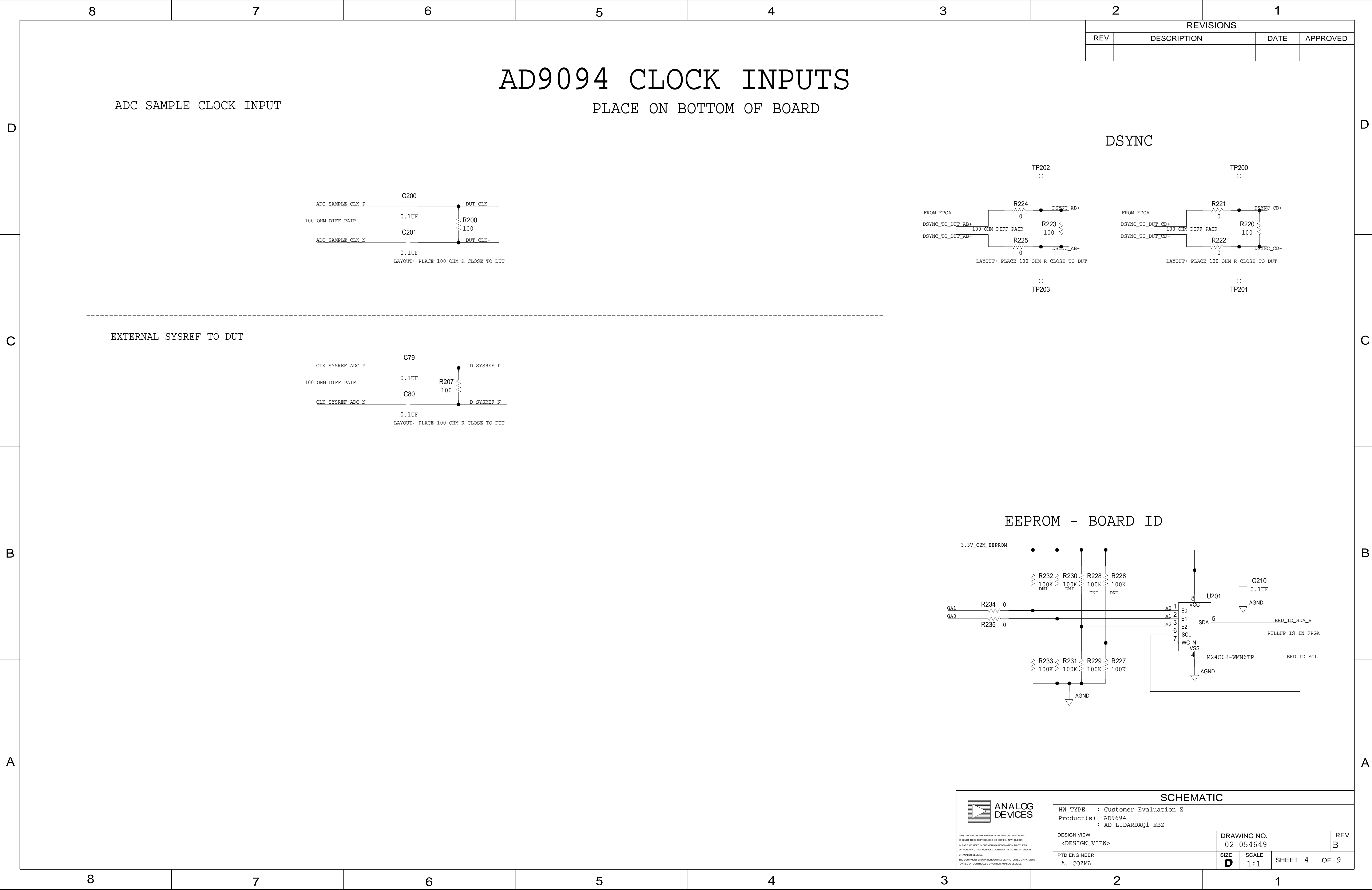
DRAWING NO.	02 054649
-------------	-----------

SIZE	SCALE	
D	1:1	

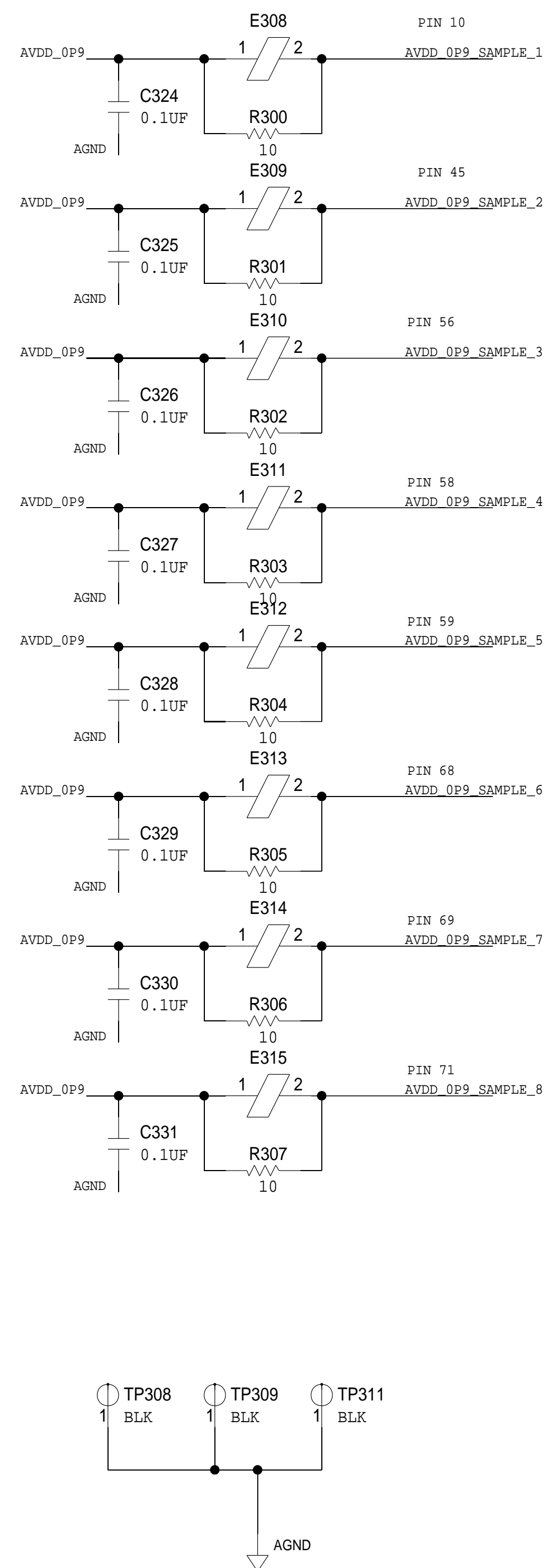
REV
3


SHEET 2 OF 9



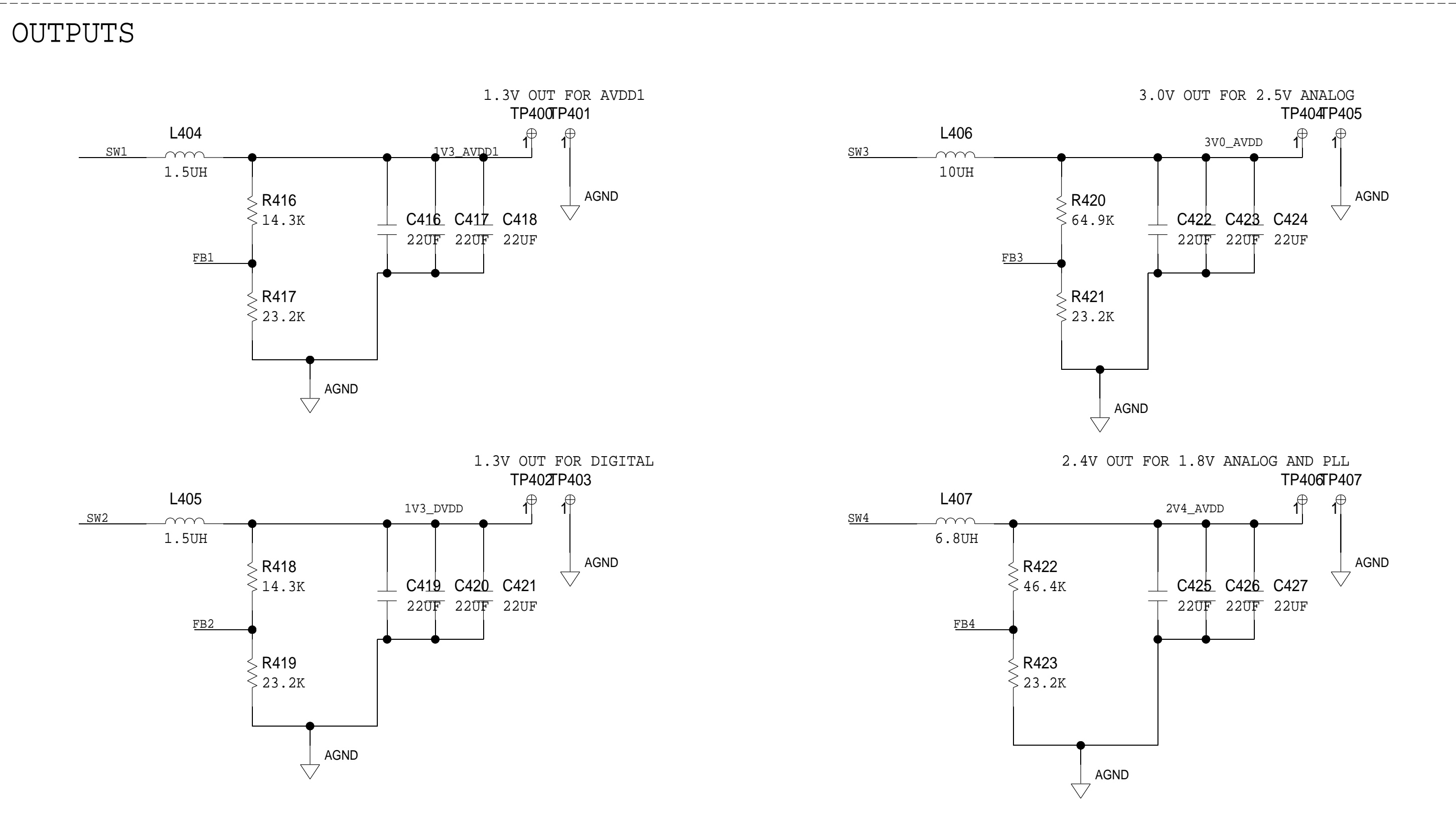
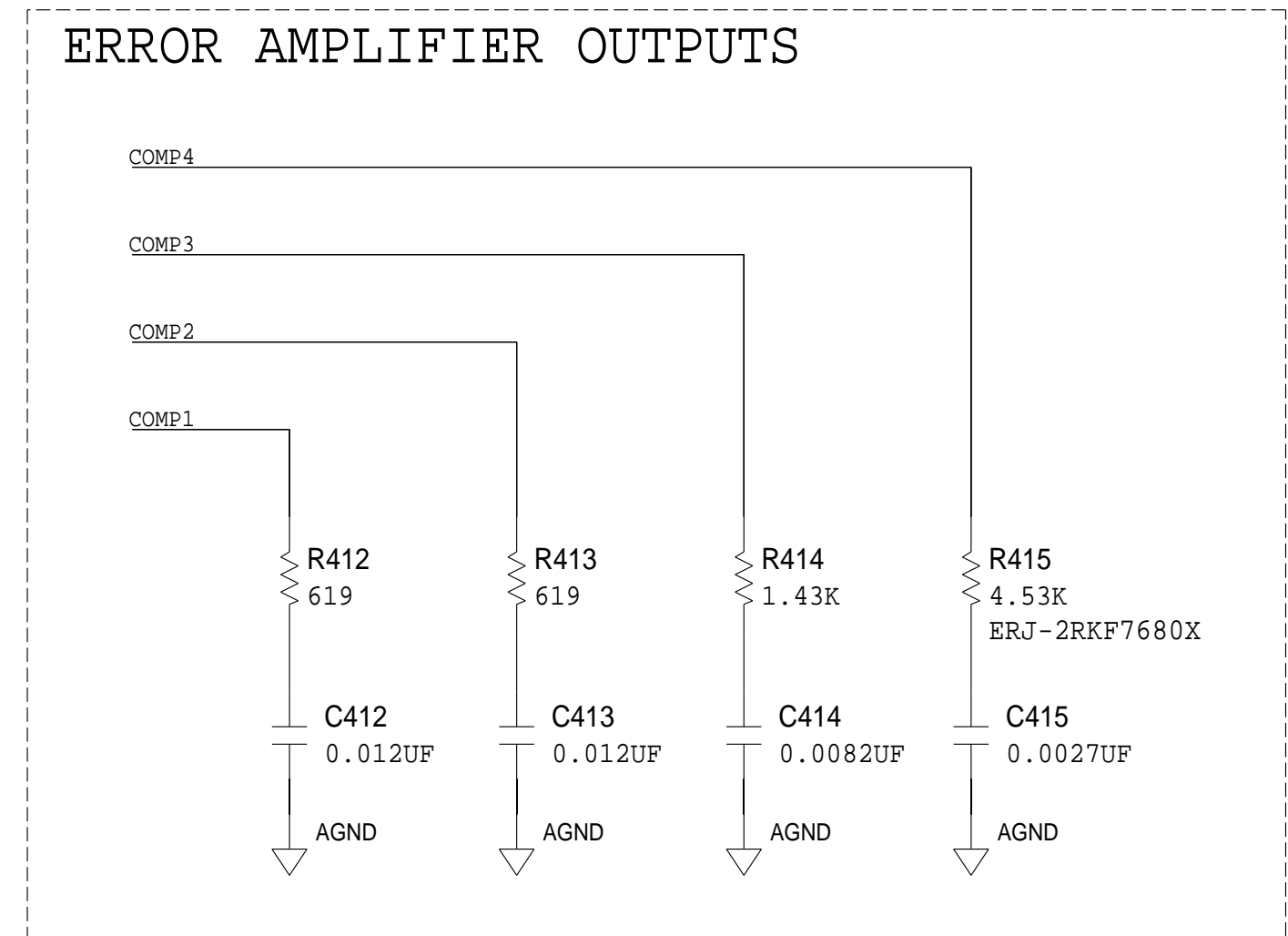
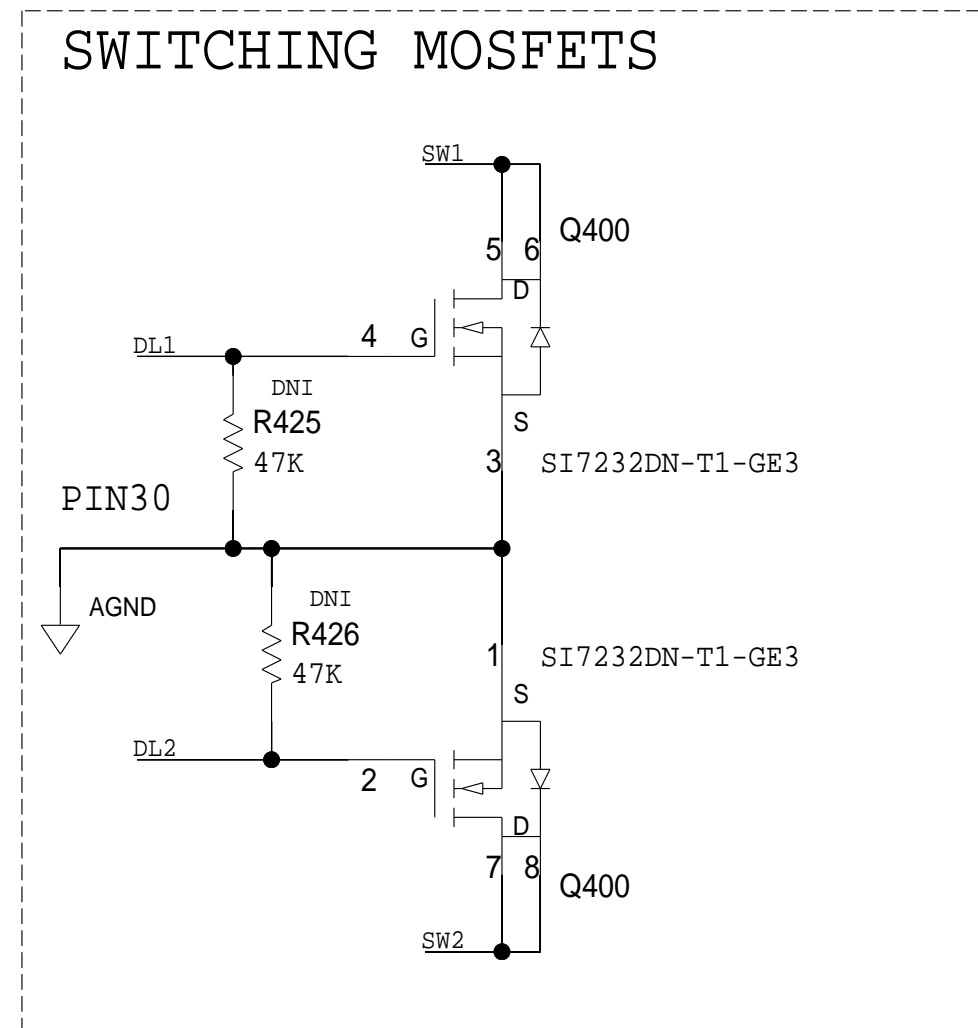


REVISIONS			
REV	DESCRIPTION	DATE	APPROVED



 ANALOG DEVICES	<h1 style="text-align: center;">SCHEMATIC</h1>				
	<p>HW TYPE : Customer Evaluation Z</p> <p>Product(s) : AD9694</p> <p>: AD-LIDARDAQ1-EBZ</p>				
<small>THIS DRAWING IS THE PROPERTY OF ANALOG DEVICES, INC. IT IS NOT TO BE REPRODUCED OR COPIED, IN WHOLE OR IN PART, OR USED IN FURTHERMORE INFORMATION TO OTHERS, OR FOR ANY OTHER PURPOSES UNLESS, AND TO THE EXTENT, OF ANALOG DEVICES.</small> <small>THE CURRENT DRAWING VERSION MAY BE PROTECTED BY PATENTS OWNED OR CONTROLLED BY OWNED ANALOG DEVICES.</small>	DESIGN VIEW <DESIGN_VIEW>		DRAWING NO. 02_054649		REV B
PTD ENGINEER A. COZMA	SIZE D	SCALE 1:1	SHEET 5 OF 9		

REVISIONS			
REV	DESCRIPTION	DATE	APPROVED



THIS DRAWING IS THE PROPERTY OF ANALOG DEVICES, INC.
IT IS NOT TO BE REPRODUCED OR COPIED, IN WHOLE OR
IN PART, OR USED IN FURNISHING INFORMATION TO OTHERS,
OR FOR ANY OTHER PURPOSE DETRIMENTAL TO THE INTERESTS
OF ANALOG DEVICES.

THE EQUIPMENT SHOWN HEREON MAY BE PROTECTED BY PATENT
OWNED OR CONTROLLED BY OWNED ANALOG DEVICES.

SCHEMATIC

HW TYPE	: Customer Evaluation Z
Product(s)	: AD9694
	: AD-LIDARDAQ1-EBZ

DESIGN VIEW	
<DESIGN_VIEW>	

PTD ENGINEER
A. COZMA

DRAWING NO.
02 054649

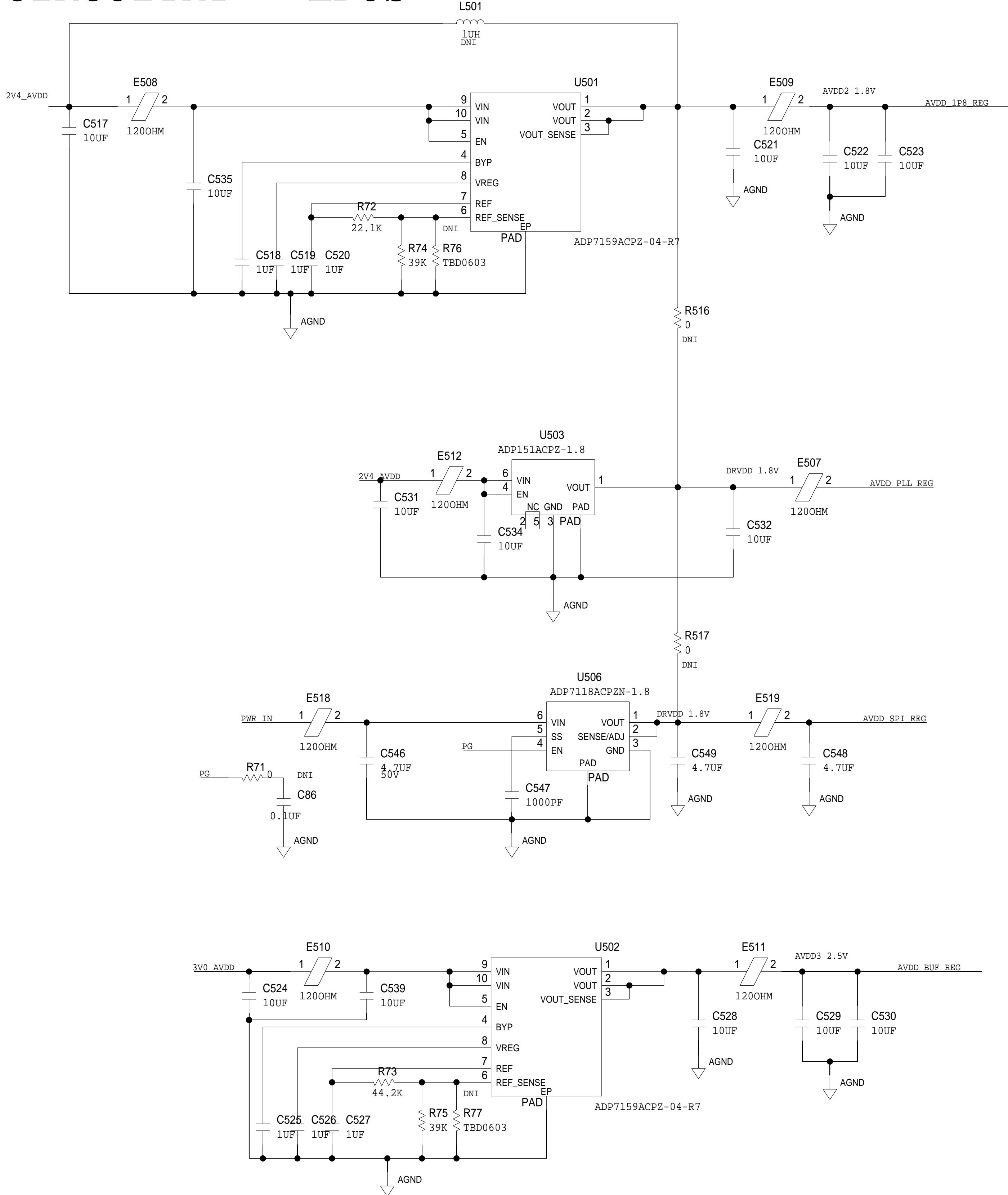
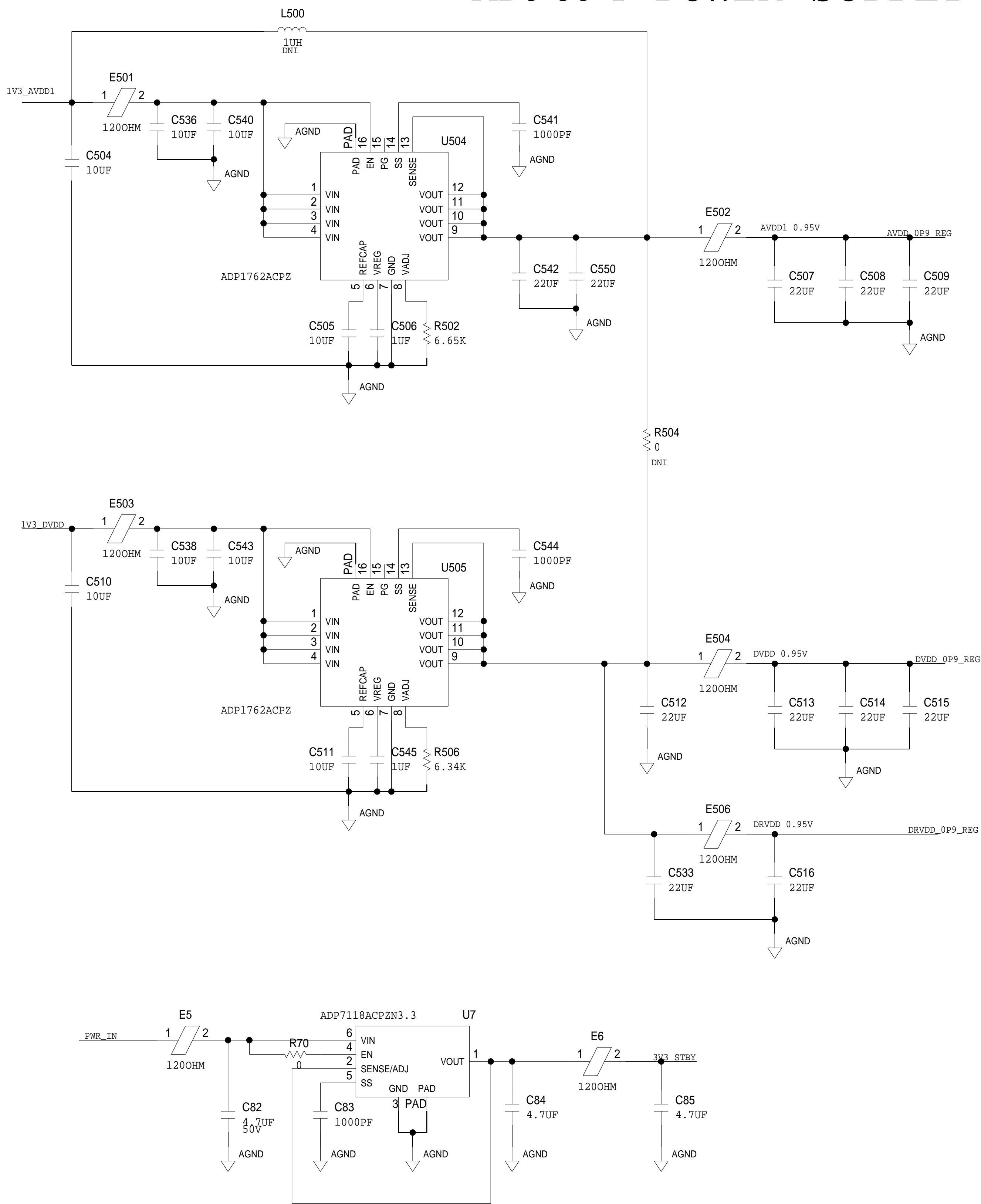
SIZE D	SCALE 1:1	
------------------	--------------	--

REV

SHEET 6 OF 9

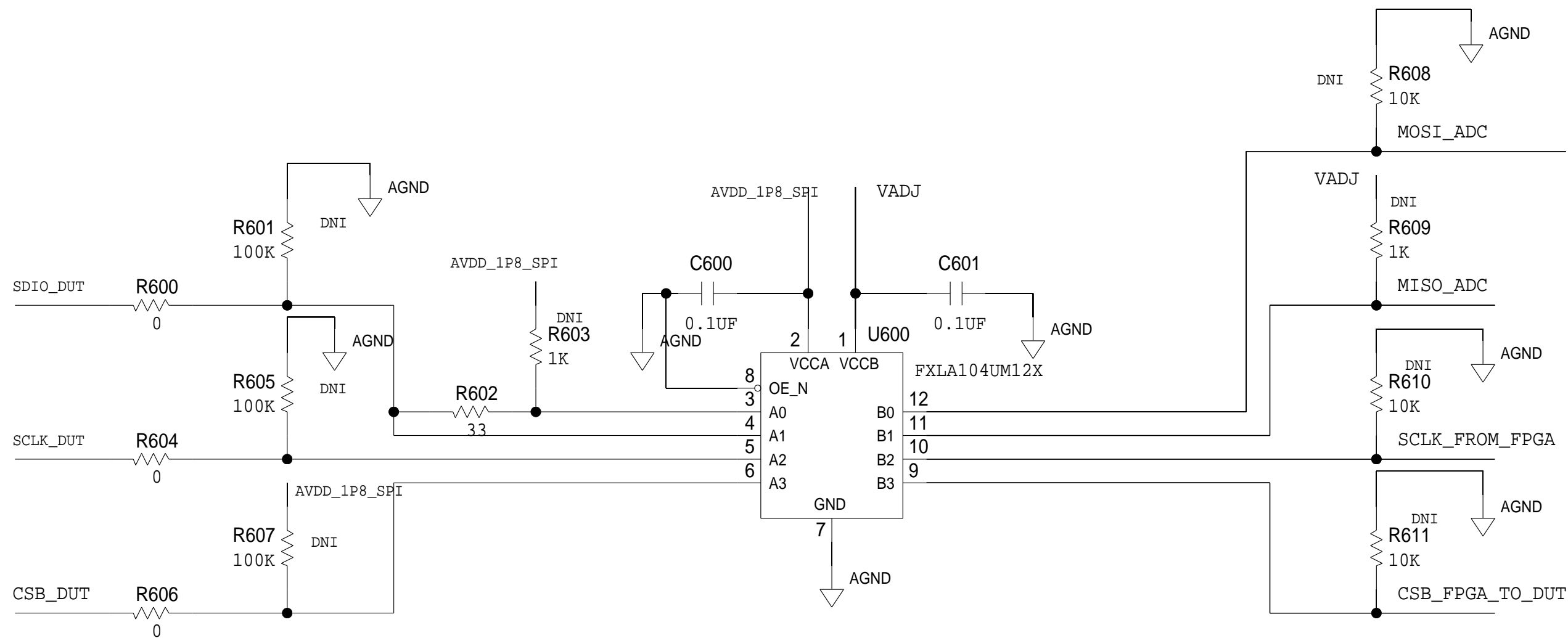
AD9094 POWER SUPPLY CIRCUITRY - LDOS

REVISIONS			
REV	DESCRIPTION	DATE	APPROVED

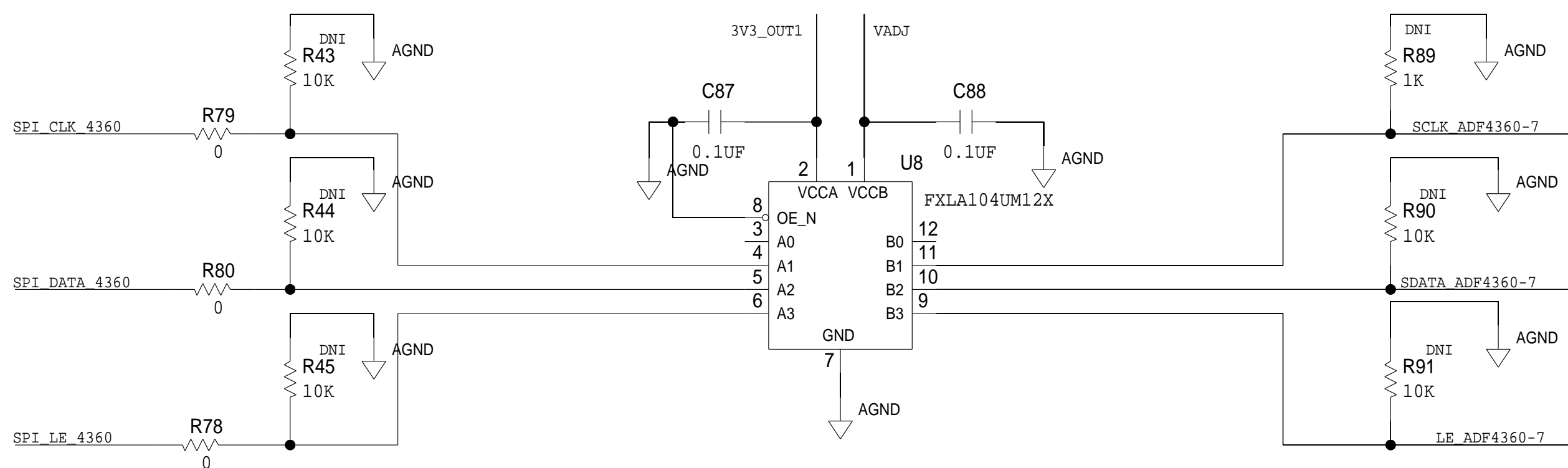


SCHEMATIC			
HW TYPE : Customer Evaluation Z Product(s): AD9694 : AD-LIDARDAQ1-EBZ			
DESIGN VIEW <DESIGN_VIEW>	DRAWING NO. 02_054649	REV B	
PTD ENGINEER A. COZMA	SIZE D	SCALE 1:1	SHEET 7 OF 9

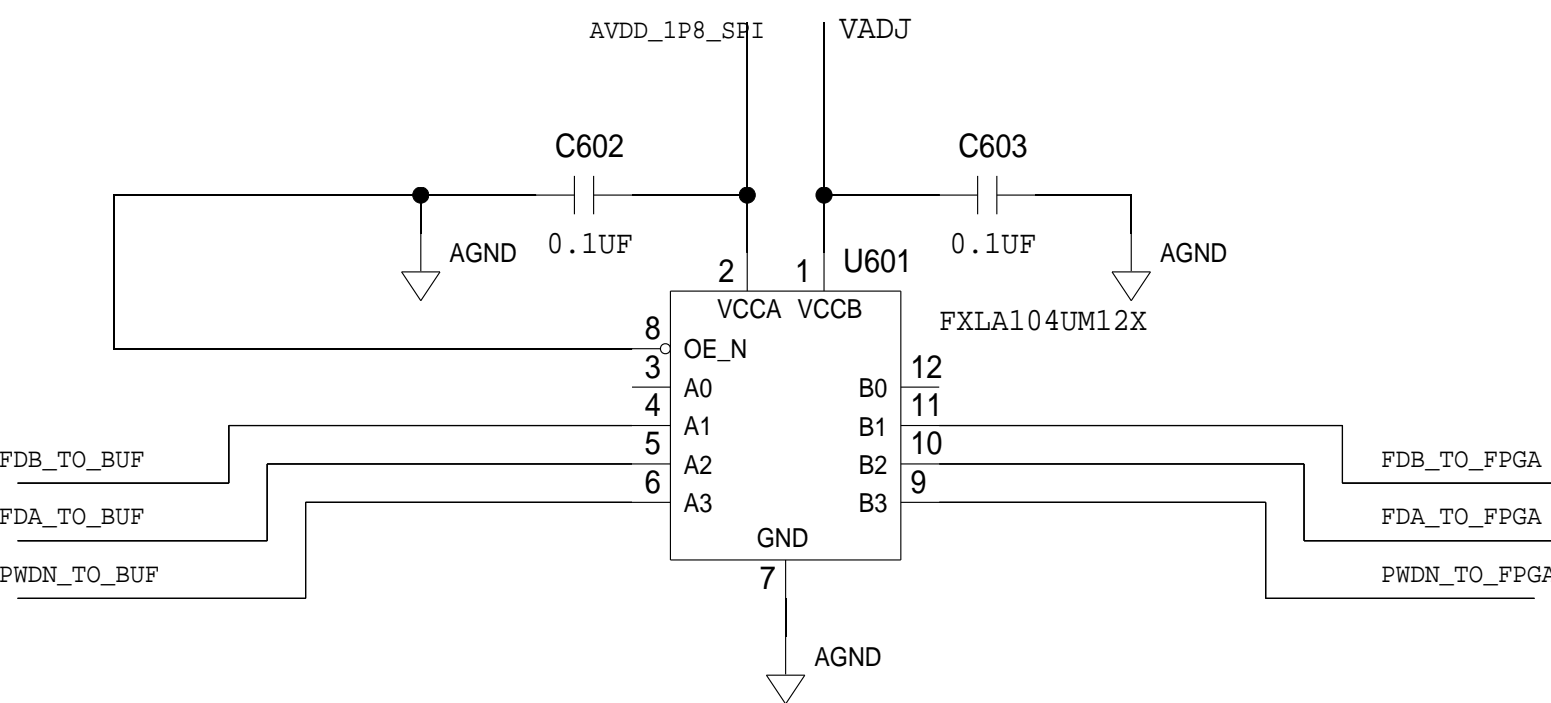
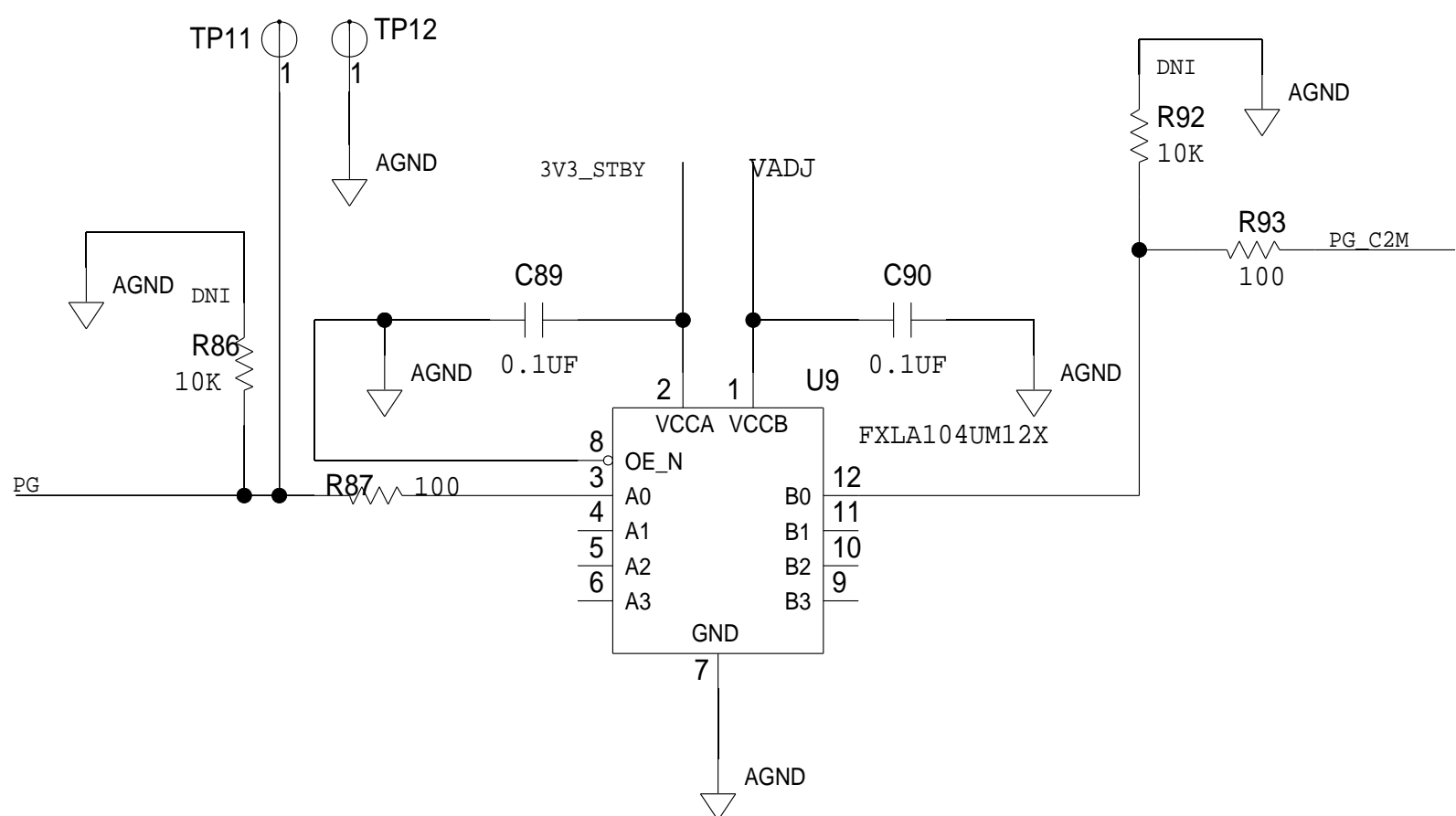
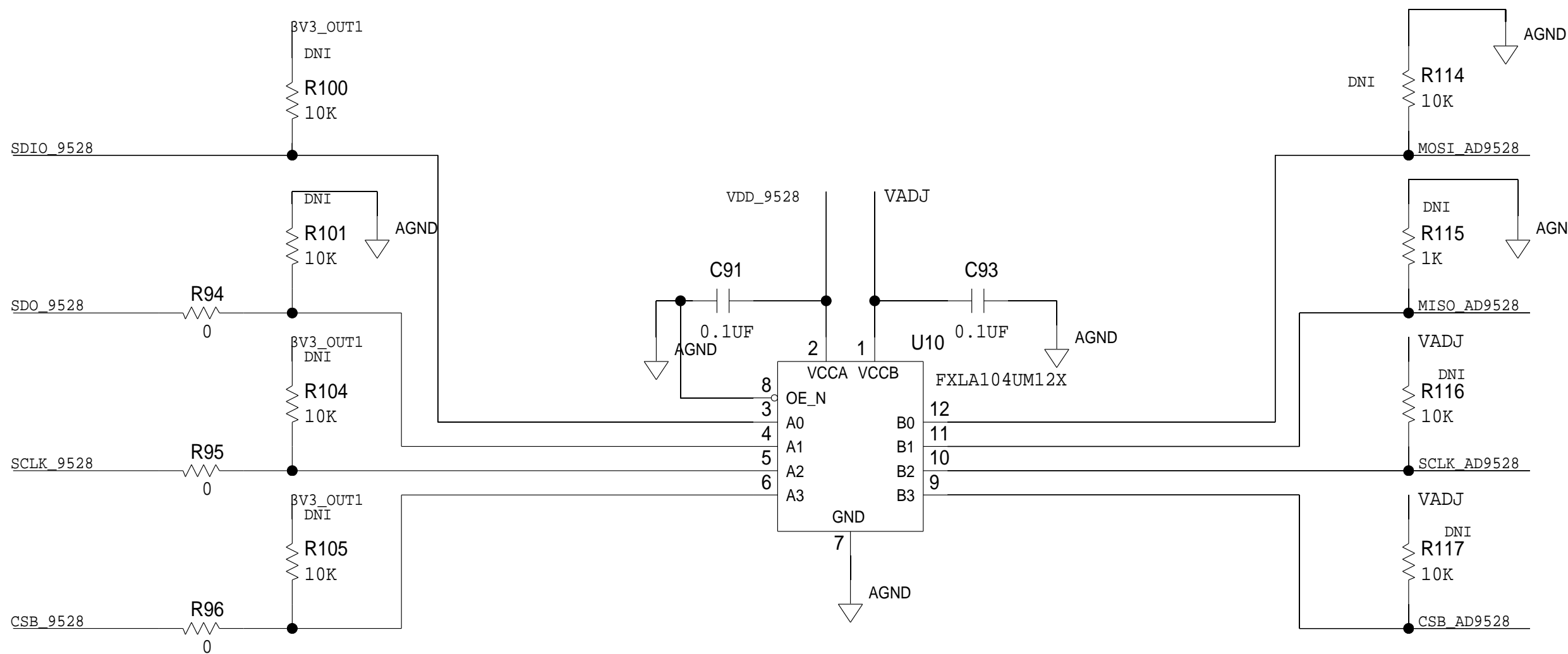
AD9094 SPI/BUFFER CIRCUIT



ADF4360-7 SPI/BUFFER CIRCUIT
& AD9508 SYNC



AD9508 SPI/BUFFER CIRCUIT



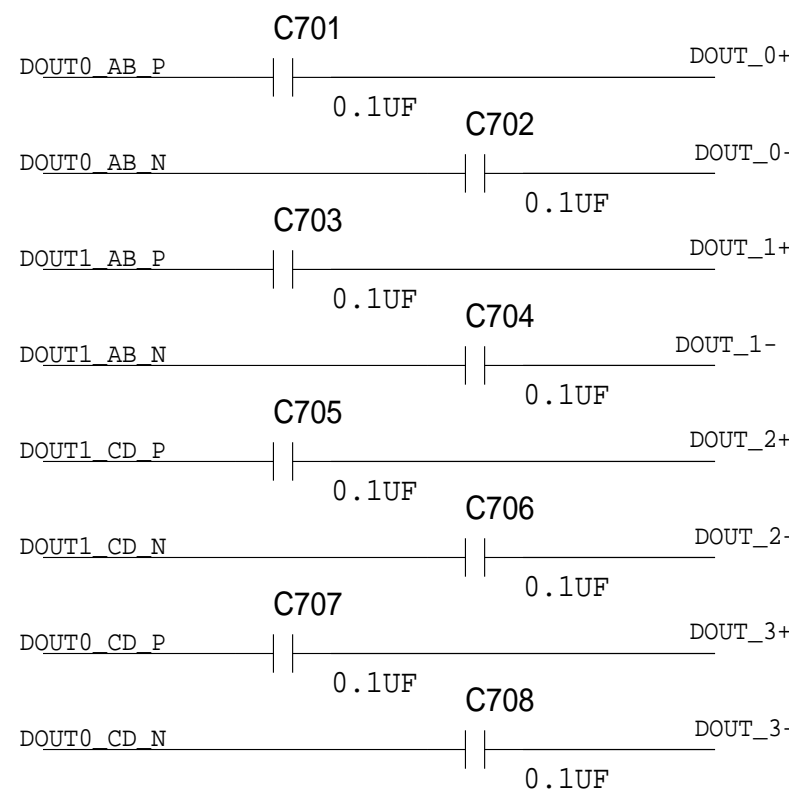
REVISIONS			
REV	DESCRIPTION	DATE	APPROVED

ANALOG DEVICES		SCHEMATIC	
HW TYPE : Customer Evaluation Z		Product(s): AD9694	
Product(s): AD-LIDARDAQ1-EBZ		DESIGN VIEW	
<DESIGN_VIEW>		DRAWING NO. 02_054649	
PTD ENGINEER		SCALE 1:1	
A. COZMA		SHEET 8 OF 9	

AD9094 ADS7 FMC CONNECTIONS

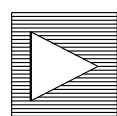
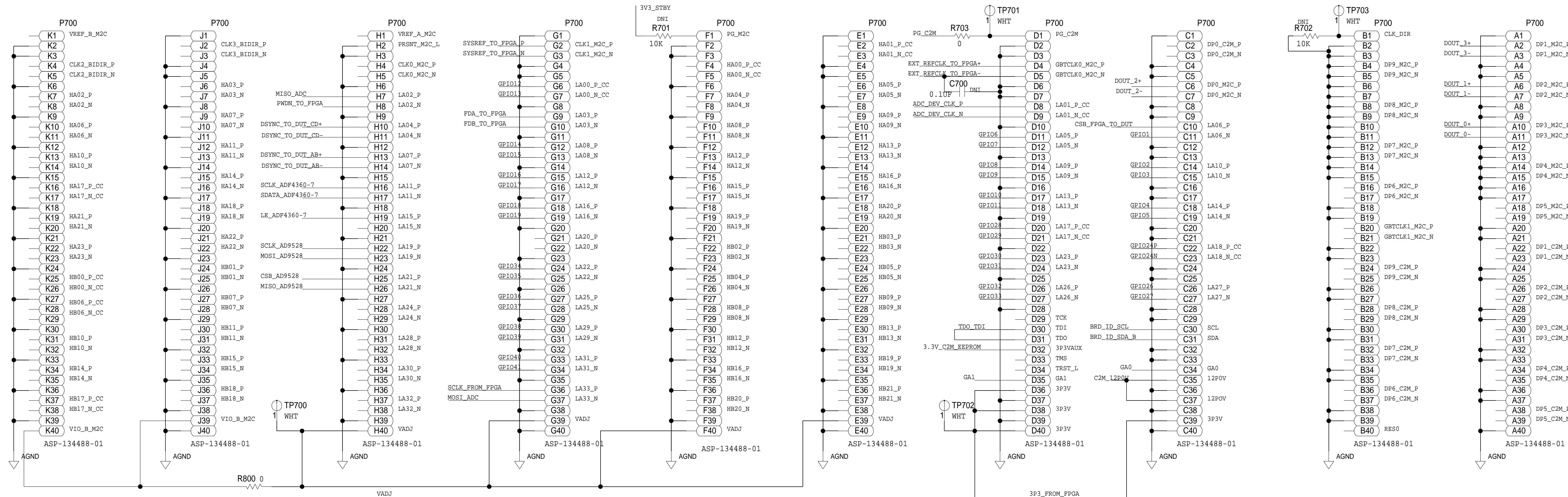
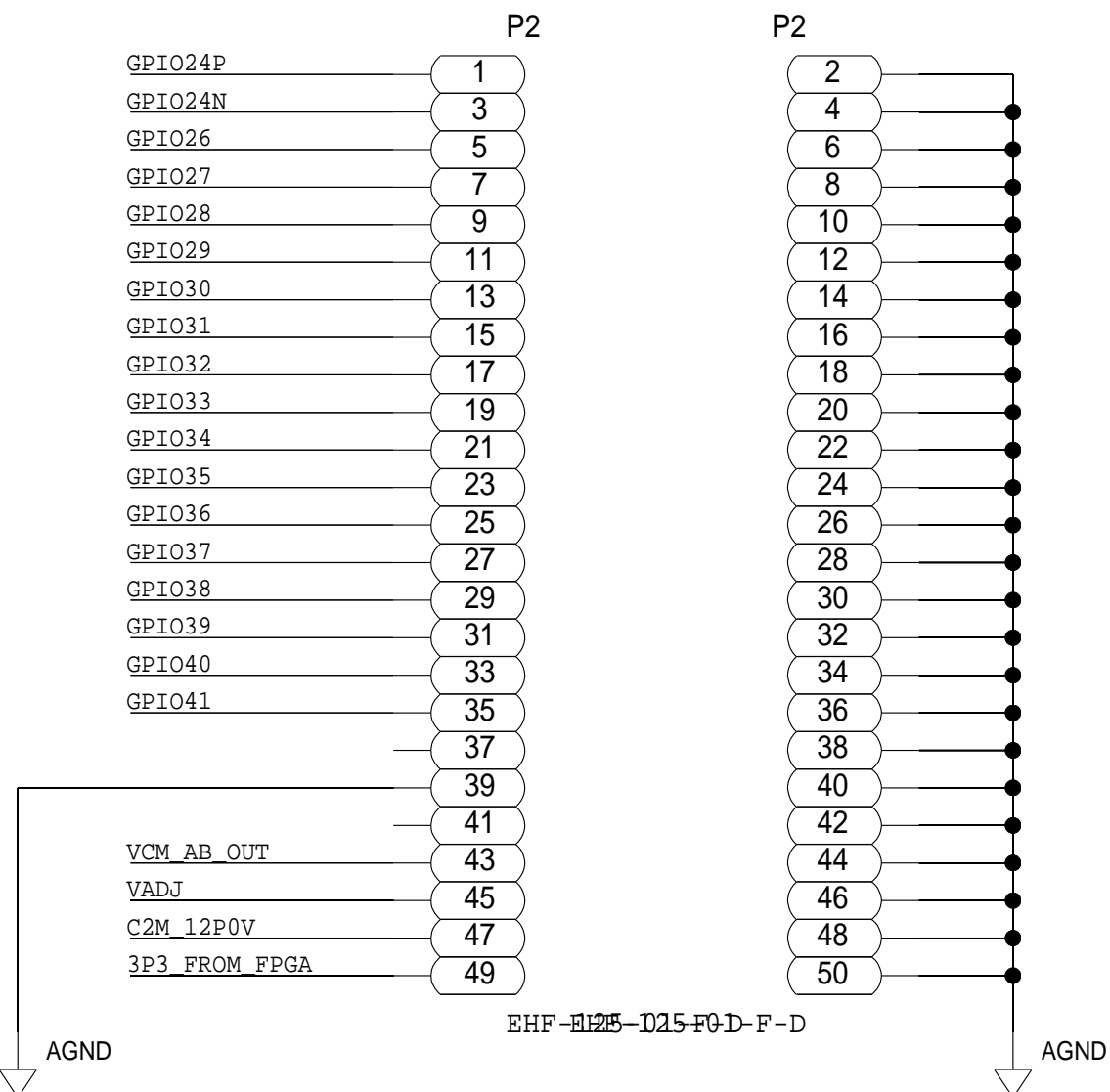
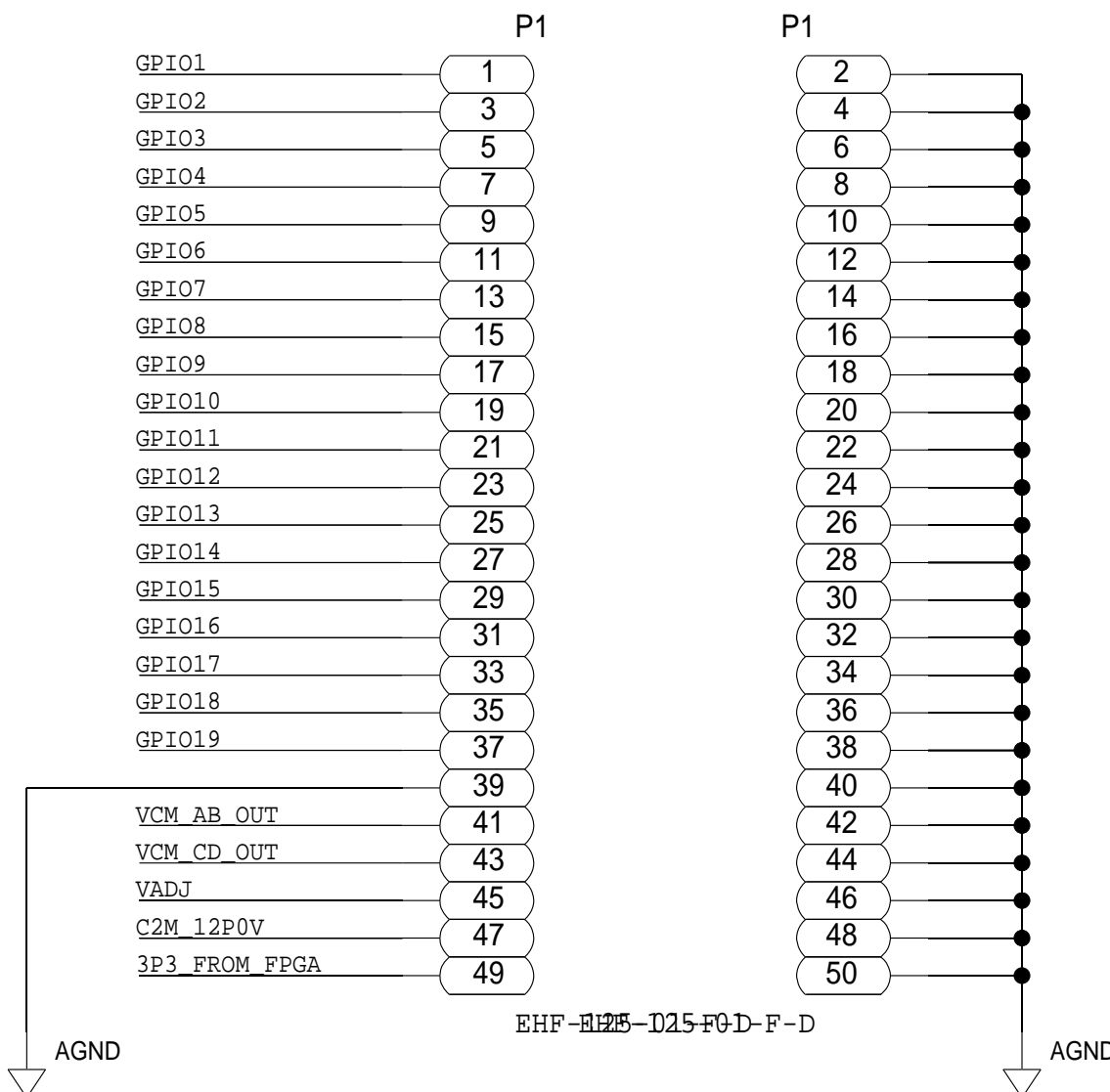
2 X EHF-125-01-F-D

PLACE AS CLOSE TO DUT AS POSSIBLE
OUTSIDE OF SOCKET



PLEASE LENGTH MATCH ALL DOUT PAIRS
PLEASE USE DIFFERENTIAL IMPED = 100OHM FOR ALL DOUT PAIRS

PLEASE MAKE GPIO24P&N A 100OH DIIF LINE



ANALOG
DEVICES

THIS DOCUMENT IS THE PROPERTY OF ANALOG DEVICES INC.
IT IS NOT TO BE REPRODUCED OR COPIED IN WHOLE OR
IN PART, OR USED IN FURNISHING INFORMATION TO OTHERS,
OR FOR ANY OTHER PURPOSE DETRIMENTAL TO THE INTERESTS
OF ANALOG DEVICES.
THE EQUIPMENT SHOWN HEREON MAY BE PROTECTED BY PATENTS
OWNED OR CONTROLLED BY OWNED ANALOG DEVICES.

SCHEMATIC

HW TYPE : Customer Evaluation Z
Product(s) : AD9694
: AD-LIDARDAQ1-EBZ

DESIGN VIEW

<DESIGN_VIEW>

PTD ENGINEER

A. COZMA

DRAWING NO.

02_054649

SIZE

D

SCALE

1:1

SHEET

9

OF

9

REV

B