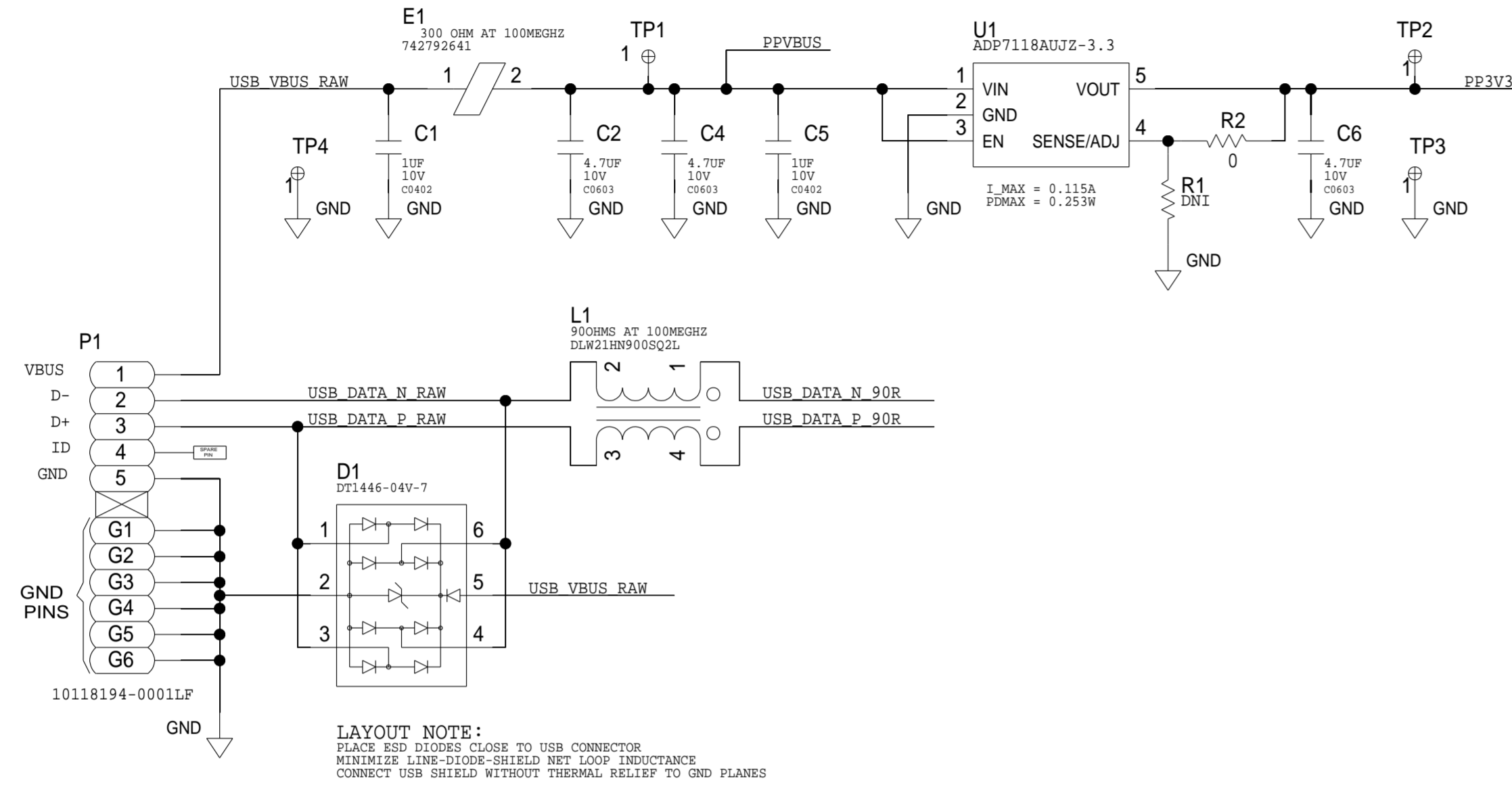


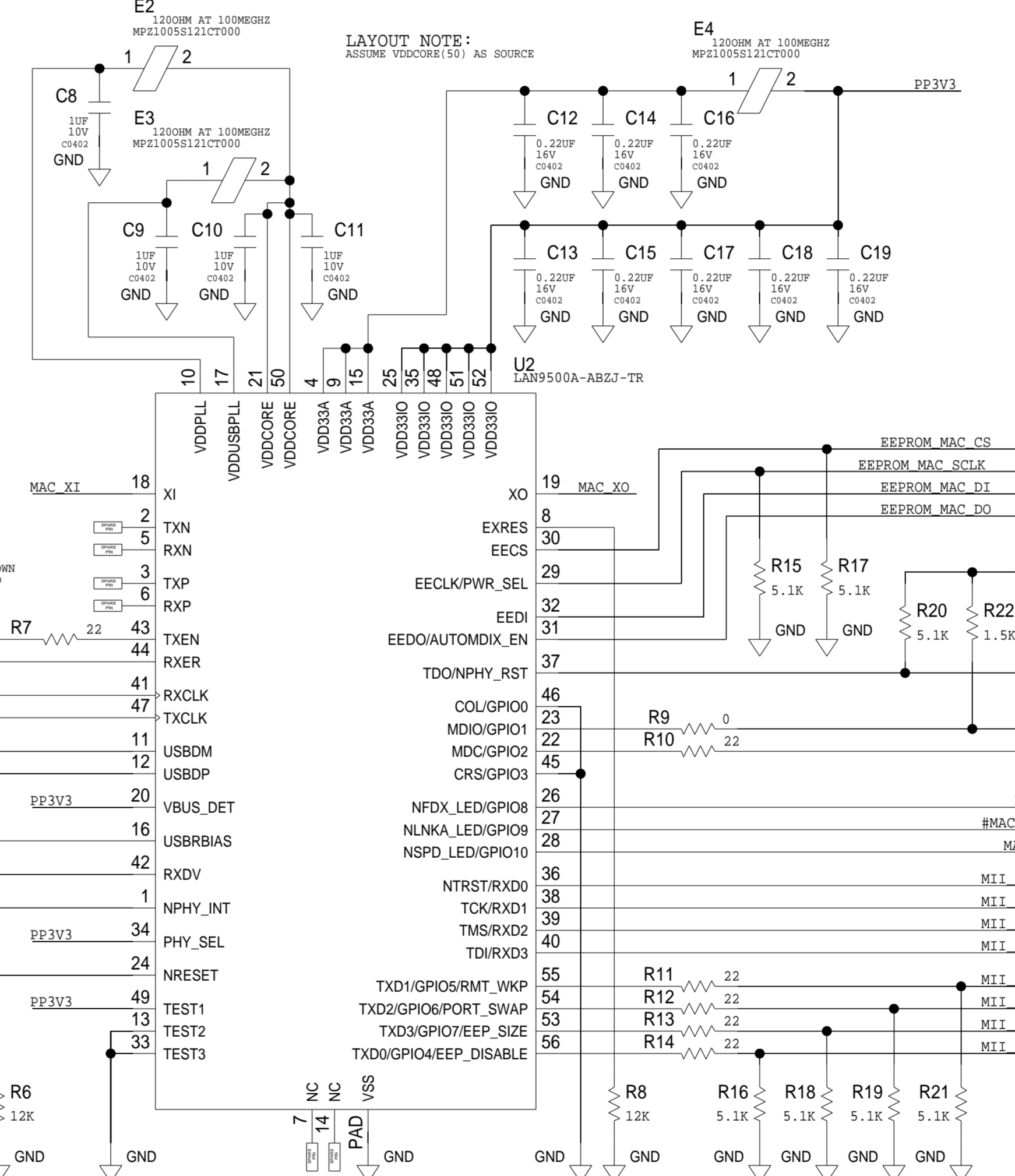


| REVISIONS |             |      |          |
|-----------|-------------|------|----------|
| REV       | DESCRIPTION | DATE | APPROVED |
|           |             |      |          |

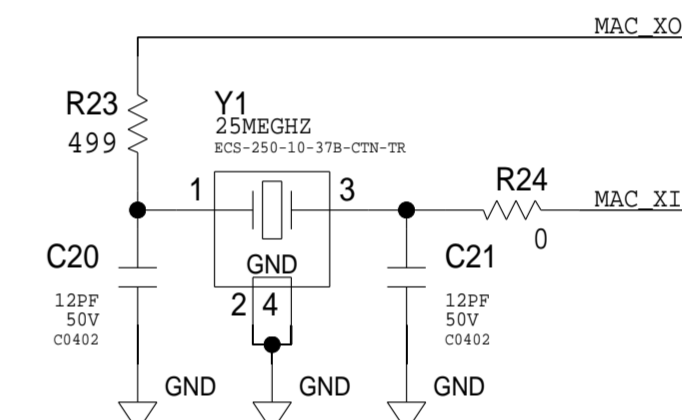
## POWER & DATA INPUT



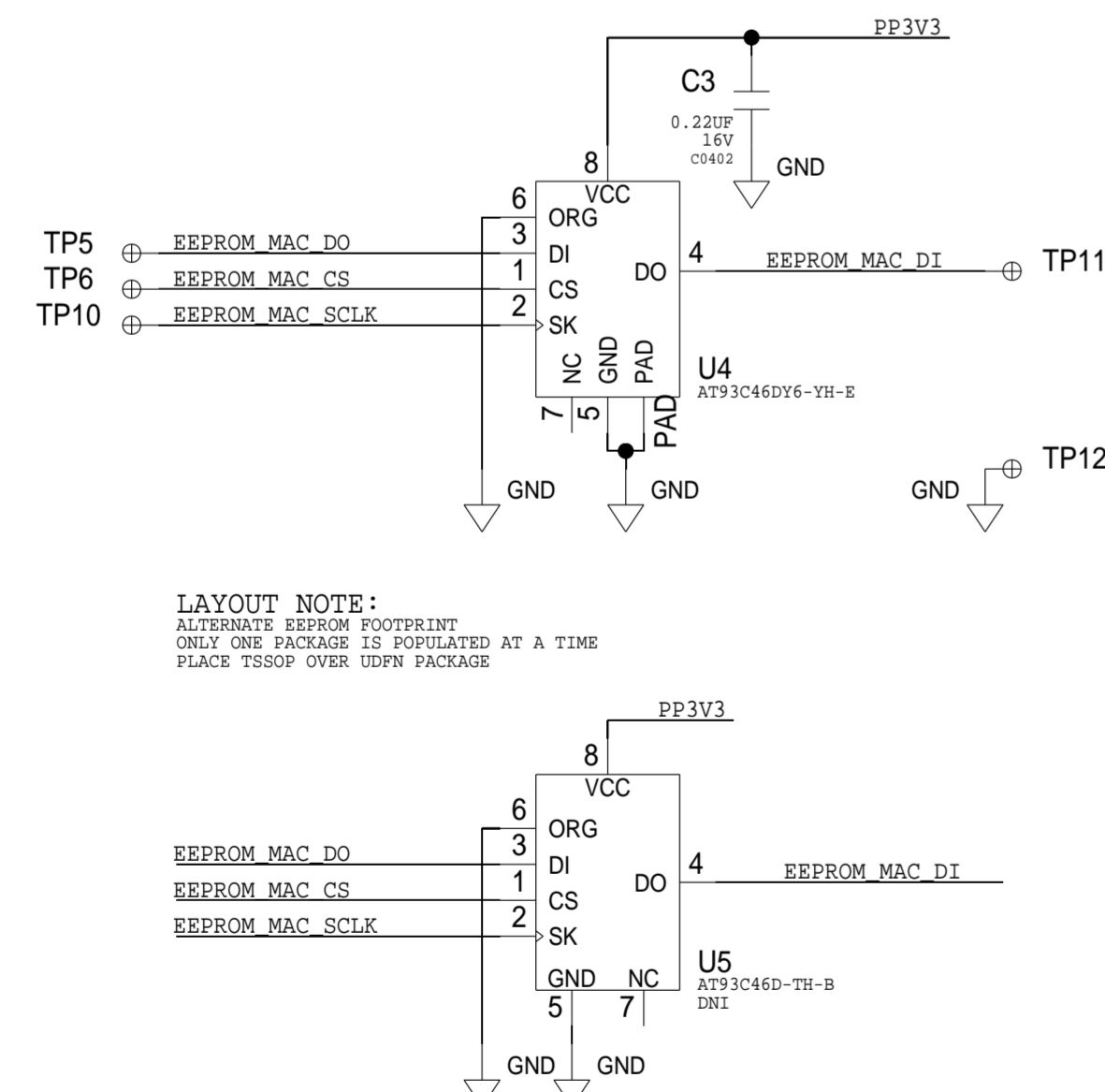
## USB2.0 CONTROLLER & ETHERNET MAC



## MAC XTAL



## MAC EEPROM



### MAC CONFIG. STRAPS

PHY\_SEL = 3.3V  
VBUS\_DET = 3.3V  
EEP\_SIZE = PD/0  
PORT\_SWAP = PD/0  
RMT\_WKP = PD/0  
EEP\_DISABLE = PD/0  
PWR\_SEL = PD/0  
AUTOMDIX\_EN = PU/1

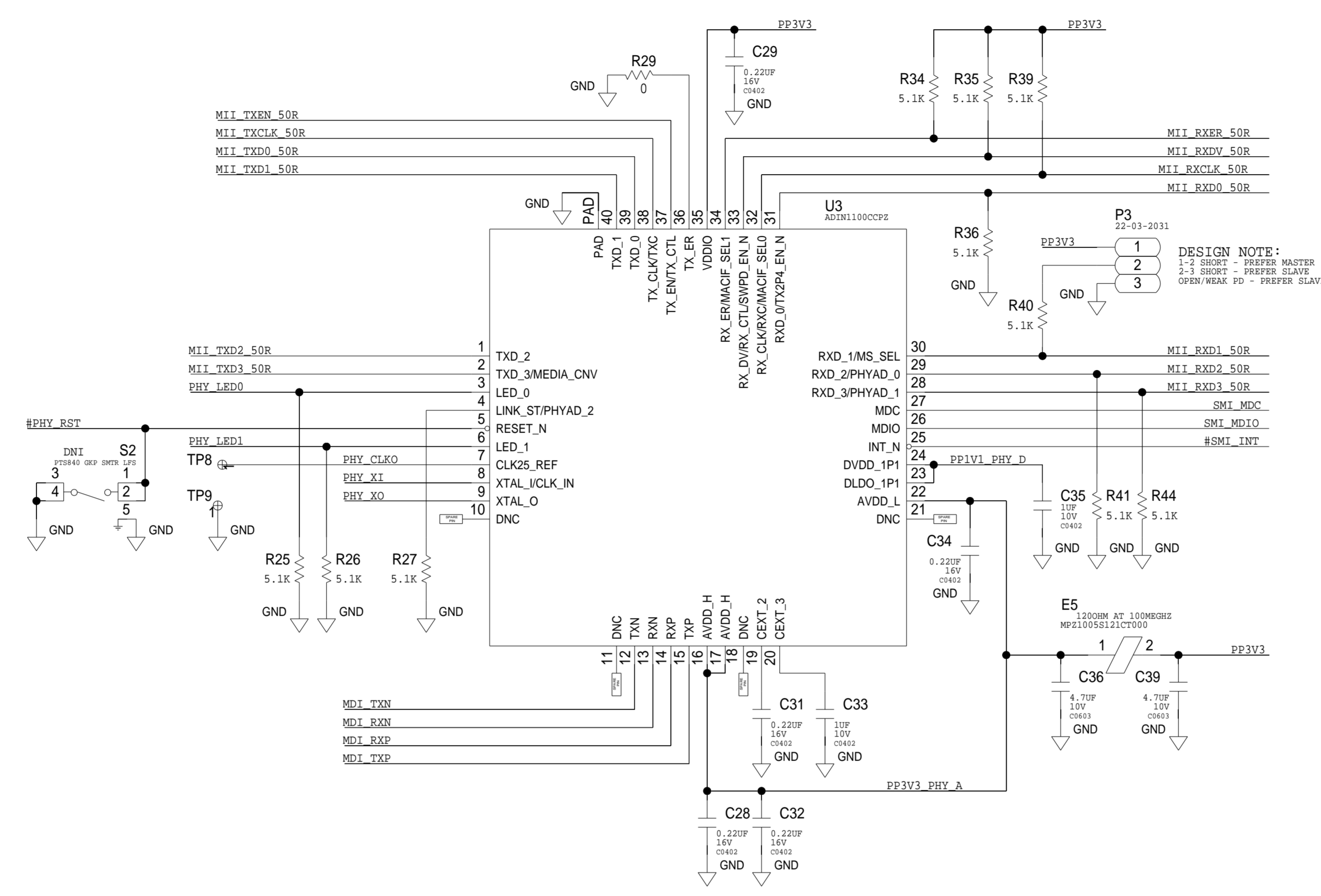
### SETTINGS

- EXTERNAL PHY USED, INTERNAL PHY IN SHUTDOWN
- BUS-POWERED OPERATION
- 128X8BIT EEPROM USED (ONLY)
- USBDP->D+, USBDM->D- MAPPING
- REMOTE WAKEUP NOT SUPPORTED, OVRWRIT BY EEPROM
- EEPROM RECOGNIZED IF PRESENT BY DEFAULT
- DEVICE IS BUS POWERED
- AUTOMDIX ENABLED - NOT USED/NOT REQUIRED

| SCHEMATIC                    |                          |   |              |
|------------------------------|--------------------------|---|--------------|
| ANALOG DEVICES               |                          | HW TYPE : Customer Evaluation<br>Product(s) : LTC9110<br>: ADIN1100 |              |
| DESIGN VIEW<br><DESIGN_VIEW> | DRAWING NO.<br>02_068285 | REV<br>B  |              |
| PTD ENGINEER<br>M. BANCISOR  | SIZE<br>D                | SCALE<br>1:1  | SHEET 2 OF 3 |

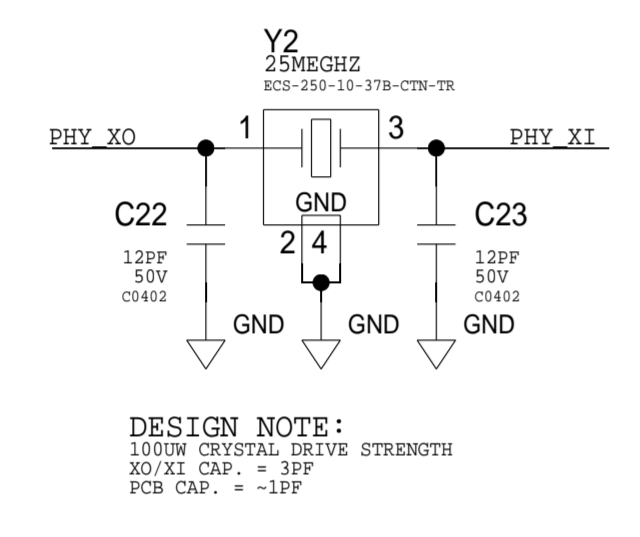
| REVISIONS |             |      |          |
|-----------|-------------|------|----------|
| REV       | DESCRIPTION | DATE | APPROVED |
|           |             |      |          |

# 10BASE-T1L PHY

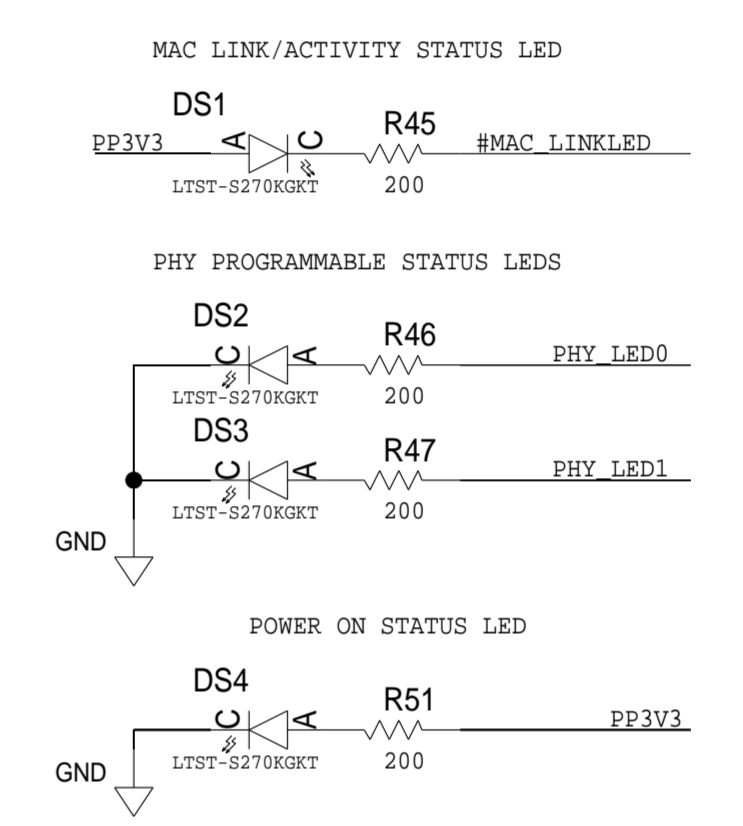


DESIGN NOTE:  
 1-2 SHORT - PREFER MASTER  
 2-3 SHORT - PREFER SLAVE  
 OPEN/WEAK PD - PREFER SLAVE

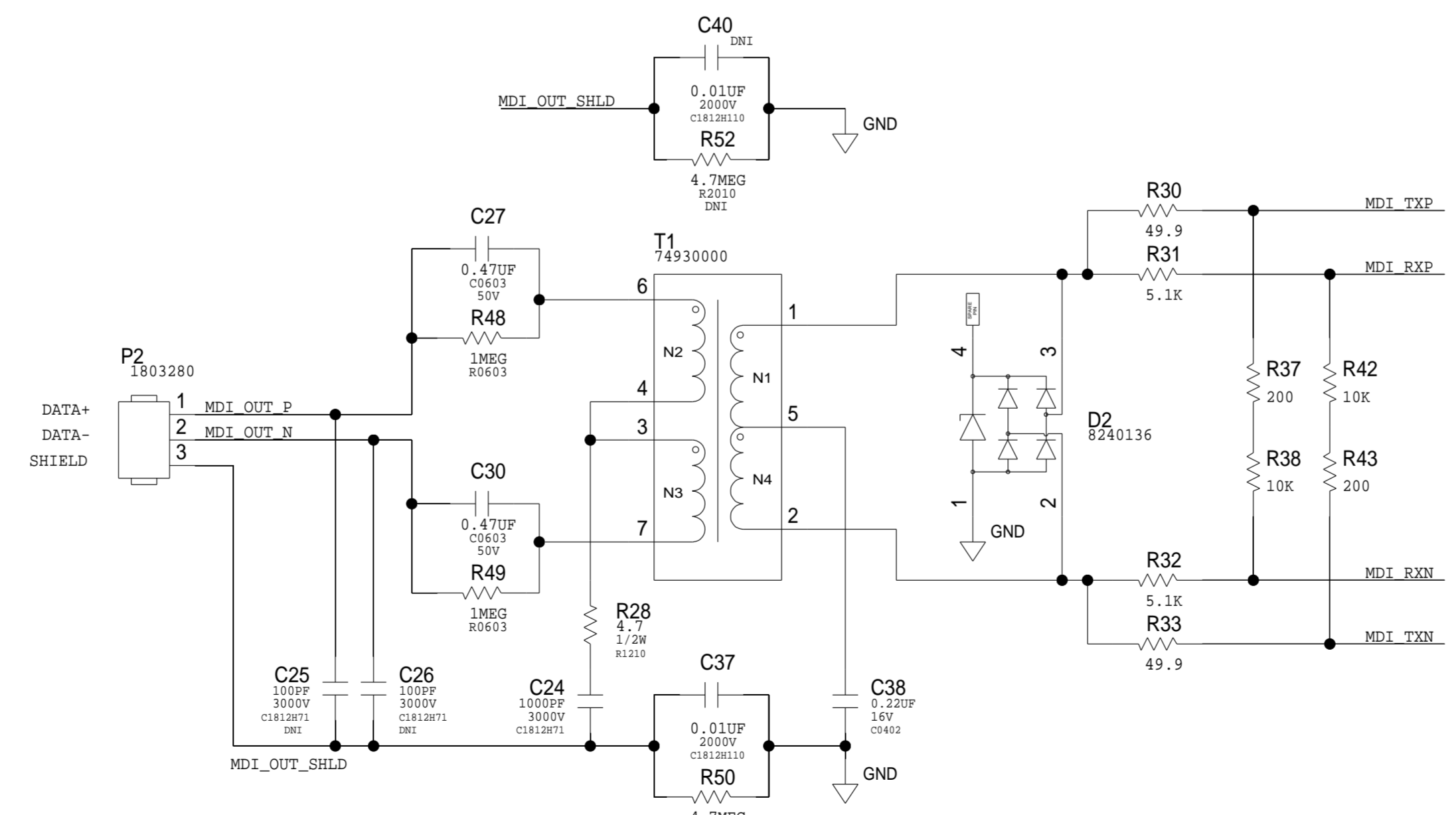
## PHY XTAL



## STATUS LEDS



## PHY FRONT-END



### PHY CONFIG. STRAPS

NSWPD\_EN = PU/1  
 MACIF\_SELO = PU/1  
 MACIF\_SEL1 = PU/1  
 NTX2P4\_EN = PD/0  
 MEDIA\_CNVD = PD/0  
 PHYAD\_0 = PD/0  
 PHYAD\_1 = PD/0  
 PHYAD\_2 = PD/0  
 LED\_0/LED\_1 = PD/0  
 MS\_SEL = USER JMP SEL

### SETTINGS

- DISABLE SOFTWARE POWER-DOWN AFTER RESET
- MAC INTERFACE SELECTION, MACIFSEL[1:0] = 11 FOR MII
- MAC INTERFACE SELECTION, MACIFSEL1[1:0] = 11 FOR MII
- ENABLE BOTH LVFP AND 2.4VFP TRANSMIT AMPLITUDE
- NORMAL PHY OPERATION
- PHY ADDRESS CONFIGURATION
- PHY ADDRESS CONFIGURATION
- PHY ADDRESS CONFIGURATION
- STATUS LEDS CONFIGURED AS ACTIVE HIGH
- JUMPER SELECTS MASTER/SLAVE PREFERENCE, DEFAULT TO SLAVE PREF.

| SCHEMATIC  |                             |                          |              |
|--|-----------------------------|--------------------------|--------------|
| HW TYPE : Customer Evaluation<br>Product(s): LTC9110<br>: ADIN1100 |                             | DRAWING NO.<br>02_068285 | REV<br>B     |
| DESIGN VIEW<br><DESIGN_VIEW>                                       | PTD ENGINEER<br>M. BANCISOR | SIZE<br>D                | SCALE<br>1:1 |
|  |                             | SHEET 3                  | OF 3         |