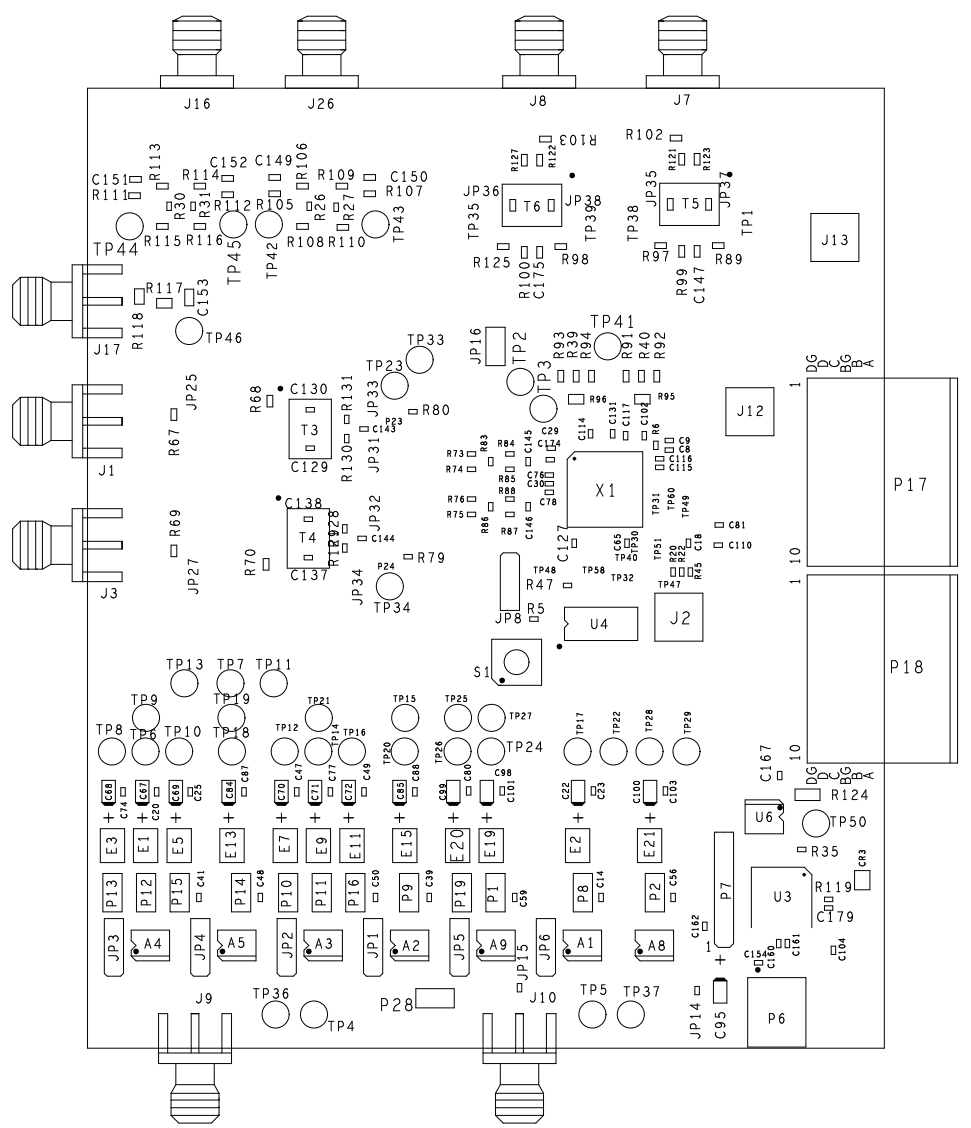
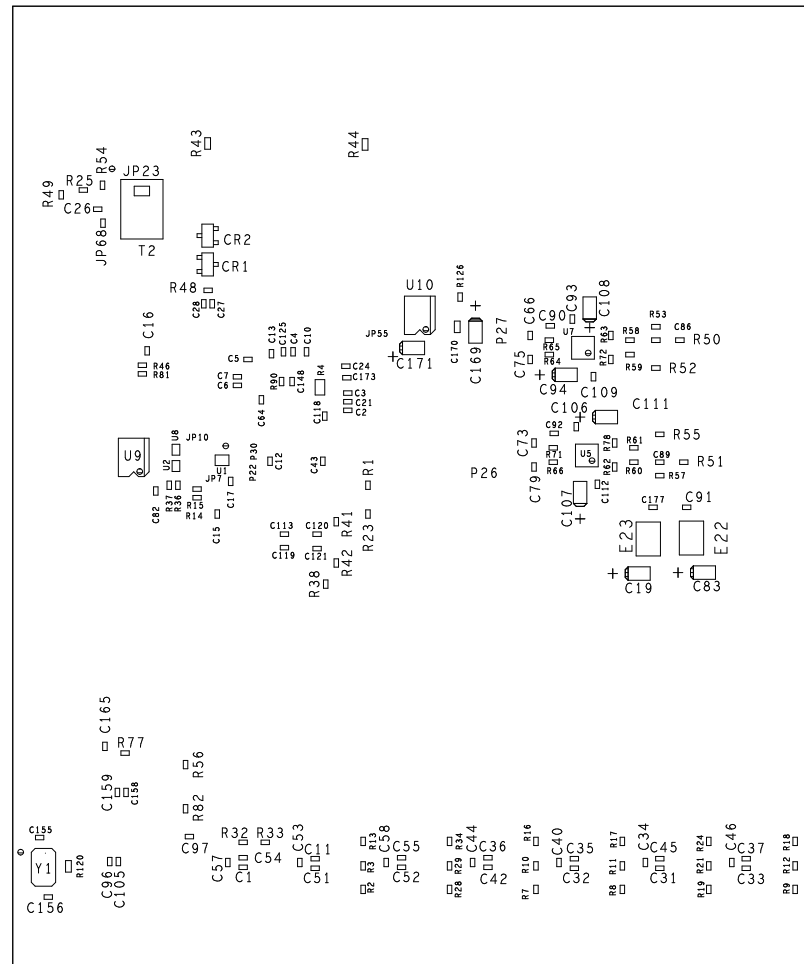



REVISIONS			
REV	DESCRIPTION	DATE	APPROVED
A	INITIAL RELEASE	27JUL09	L.M.
B	GROUND PLANE MODIFICATIONS	08DEC09	L.M.



PRIMARY SIDE



SECONDARY SIDE

UNLESS OTHERWISE SPECIFIED DIMENSIONS ARE IN INCHES TOLERANCES DECIMALS FRACTIONS ANGLES .XX +- .010 +-1/32 +/- 2 .XXX -.005	ASSEMBLY		 HSC DIVISION 831 WOBURN STREET WILMINGTON, MA 01887	
	APPROVAL		DATE	
MATERIAL	DRAWN BY		DATE	
	DESIGNED			
	CHECKED			
FINISH	APPROVED		TITLE	
	MFG ENGINEER		AD9963 EVAL BOARD	
	SIZE	FSCM NO	DRAWING NUMBER	REV
DO NOT SCALE DWG	SCALE	1/1	HSC 09010	A
			SHEET 1 OF 1	

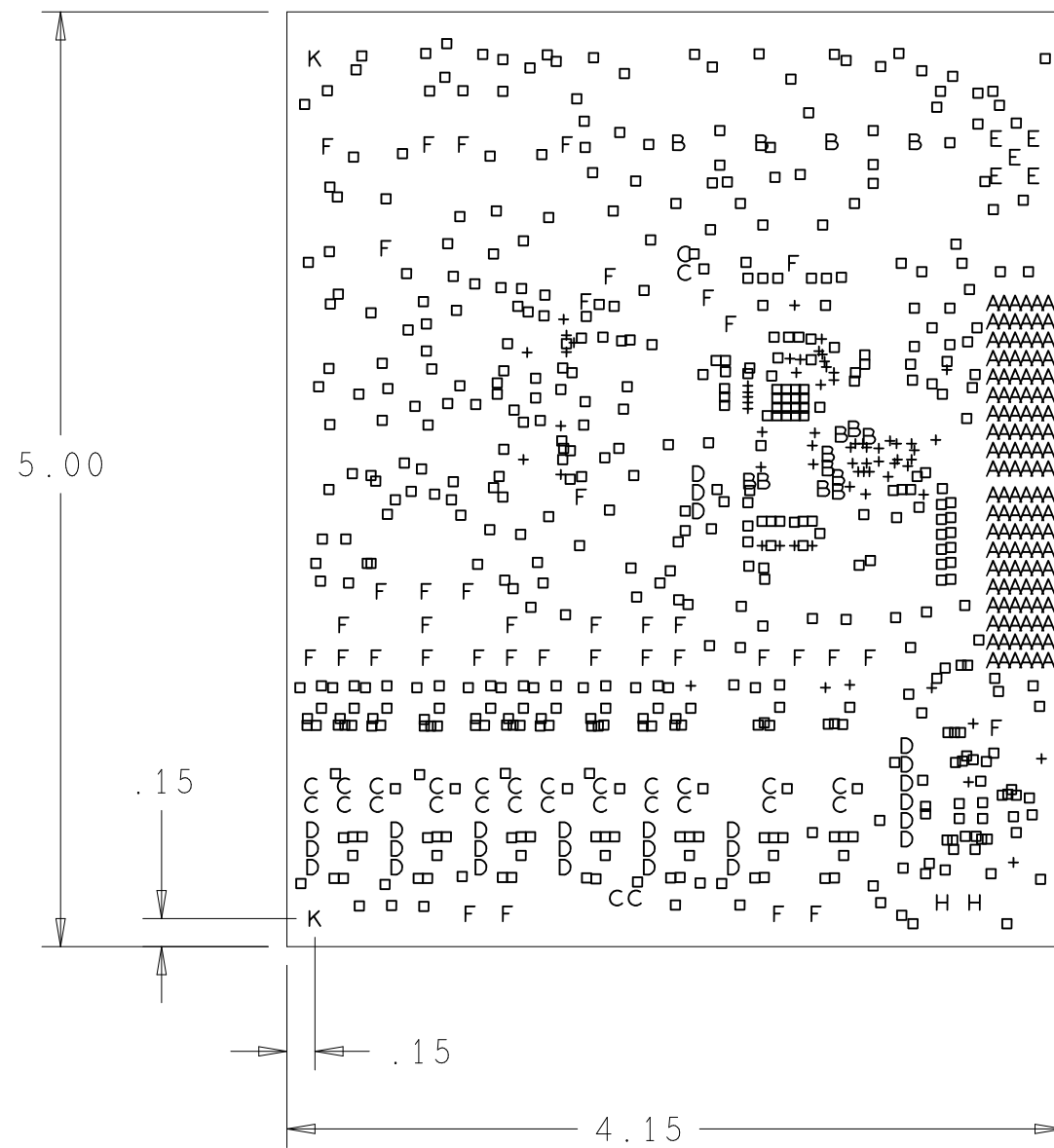
REVISIONS			
REV	DESCRIPTION	DATE	APPROVED
A	INITIAL RELEASE	27JUL09	L.M.
B	GROUND PLANE MODIFICATIONS	08DEC09	L.M.

NOTES:

- ACCEPTABILITY; PER ANALOG DEVICES, INC. SPECIFICATION TST00115 LATEST REVISION.
- MATERIALS; FR-4, IN ACCORDANCE WITH IPC-L-130 (LATEST REV.). GLASS FABRIC BASE, EPOXY RESIN, FIRE RESISTANT.
- BONDING AGENT; PREIMPREGNATED B STAGE EPOXY GLASS CLOTH IN ACCORDANCE WITH IPC-L-109 (LATEST REV.).
- CLADDING; EXTERNAL LAYERS 1/2 OZ. COPPER, OVERPLATE TO 1 1/2 OZ. INTERNAL SIGNAL LAYERS 1 OZ. COPPER.
- SOLDER MASK; SHALL BE BLUE LIQUID PHOTOIMAGABLE (LPI) APPLIED ON BOTH SIDES OVER BARE COPPER AND SHALL MEET IPC-SM-840 (LATEST REV.) CLASS 3.
- SILK SCREEN; SHALL BE PERMANENT NON-CONDUCTIVE EPOXY INK, COLOR WHITE.
- U.L. RATING; 94VO MINIMUM.

FABRICATION:

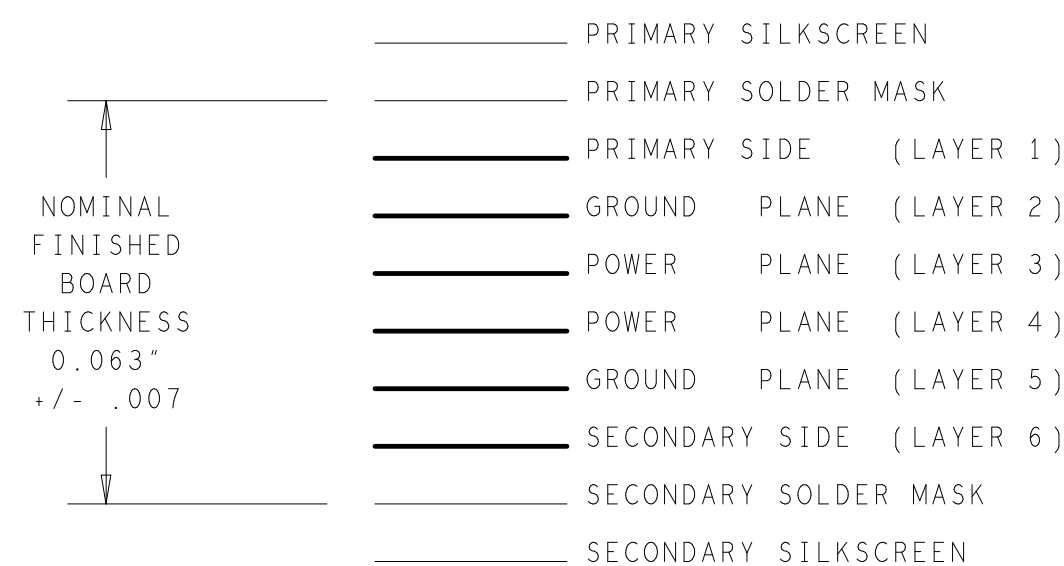
1. REFER TO IPC-6010 SERIES (LATEST REV.), CLASS 2 FOR FABRICATION UNLESS OTHERWISE SPECIFIED.
2. UNDIMENSIONED HOLES TO BE LOCATED WITHIN +/- .005 OF THEIR TRUE POSITION WITH RESPECT TO ARTWORK.
3. PLATED HOLE WALL THICKNESS SHALL NOT BE LESS THAN .001 INCH MINIMUM AVERAGE, WITH NO READING LESS THAN .0008 BY CROSS SECTION.
4. HOLE DIAMETERS APPLY AFTER PLATING.
5. FINISHED CONDUCTOR WIDTHS SHALL NOT BE REDUCED FROM THE NOMINAL, INDICATED ON THE MASTER PATTERN, BY MORE THAN THE CONDUCTOR THICKNESS.
6. MINIMUM DESIGN LINE WIDTH IS .005 INCH.
7. MINIMUM DESIGN SPACING IS .005 INCH.
8. BOARD/PANEL MUST MEET IPC-A-600 (LATEST REV.) CLASS 2 FOR FLATNESS.
9. MFR. TO LEGIBLY ETCH OR STAMP/SCREEN WITH PERMANENT NON-CONDUCTIVE INK ON SECONDARY SIDE IN A CLEAR AREA UNLESS OTHERWISE INDICATED;
 - A. U.L. CODE
 - B. DATE CODE (STAMP)
 - C. FLAMMABILITY RATING
 - D. MFR. LOGO - DESIGNATED AREA.
 - E. SUCCESSFUL ELECTRICAL BOARD TEST.
 - F. LOT NUMBER - DESIGNATED AREA.
10. NON-FUNCTIONAL PADS MAY BE REMOVED FROM INNER SIGNAL LAYERS AT MFR. DISCRETION.
11. IF PAD SIZES PROVIDED ARE NOT LARGE ENOUGH TO MAINTAIN ANNULAR RING REQUIREMENT, MFR. MAY TEAR DROP PADS TO MAINTAIN ANNULAR RING AT PAD TO CIRCUIT INTERFACE ONLY AND MUST INSURE ELECTRICAL INTEGRITY.
12. REPAIRS PER IPC-R-700 ARE ALLOWED.
13. MODIFICATIONS TO THE ARTWORK, OTHER THAN THOSE DESCRIBED ON THE FABRICATION DRAWING, ARE NOT ALLOWED WITHOUT WRITTEN AUTHORIZATION.
14. FINISH: SURFACES SHALL HAVE ENIG FINISH PLATED WITH 2-6 MICROINCHES OF IMMERSION GOLD OVER 100-200 MICROINCHES OF ELECTROLESS NICKEL.



PRIMARY SIDE

HOLE TOLERANCE
 UNLESS SPECIFIED
 PLATED: +/- .003
 NON PLATED: +/- .001

6 LAYER STACKUP

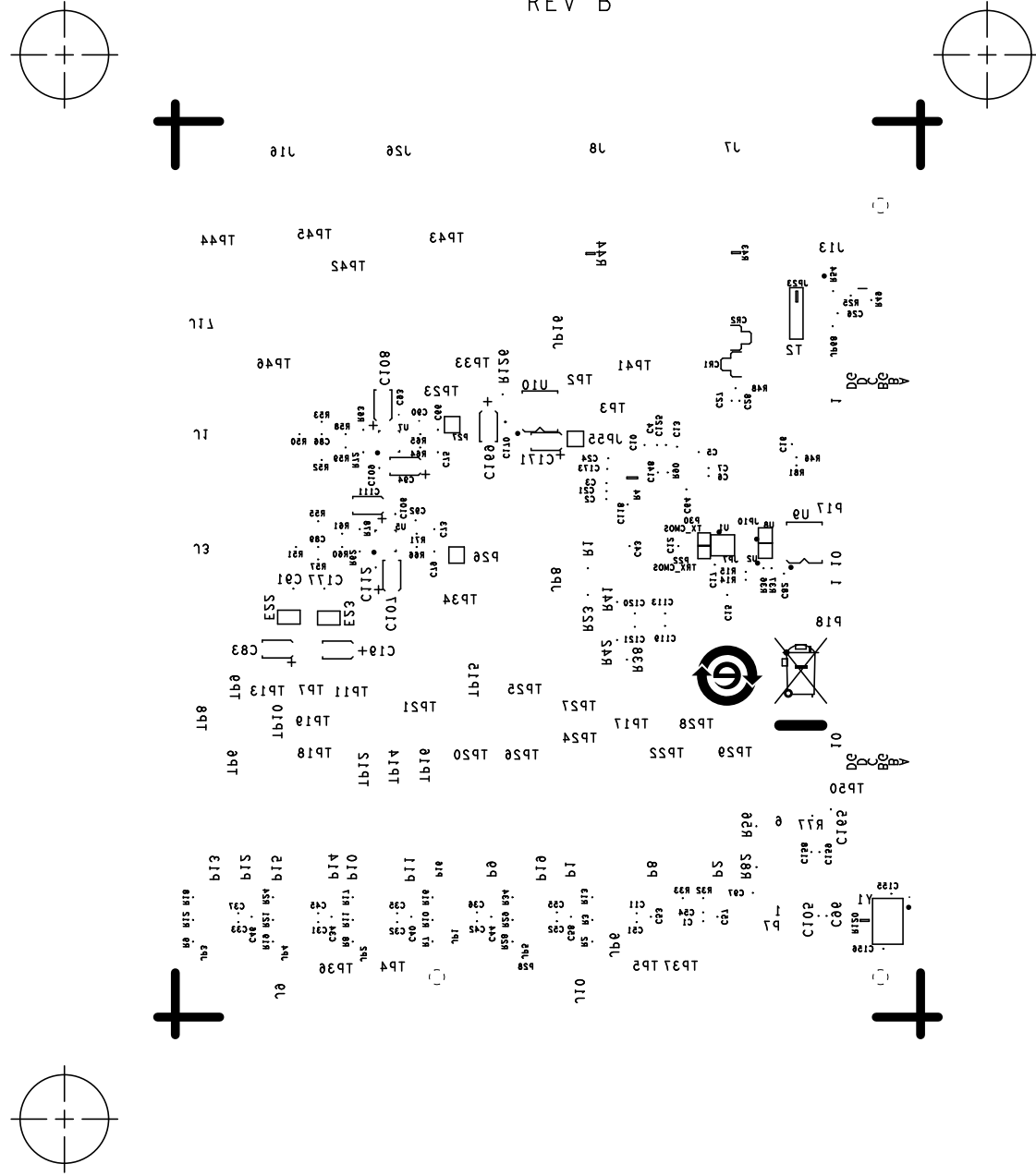


CHARACTERISTIC IMPEDANCE = 50 OHMS +/- 10%
 ARTWORK LINE WIDTH FOR IMPEDANCE CONTROLLED LINES = 0.008
 DIFFERENTIAL IMPEDANCE = 100 OHMS +/- 10%
 ARTWORK LINE WIDTH FOR IMPEDANCE CONTROLLED LINES = 0.005

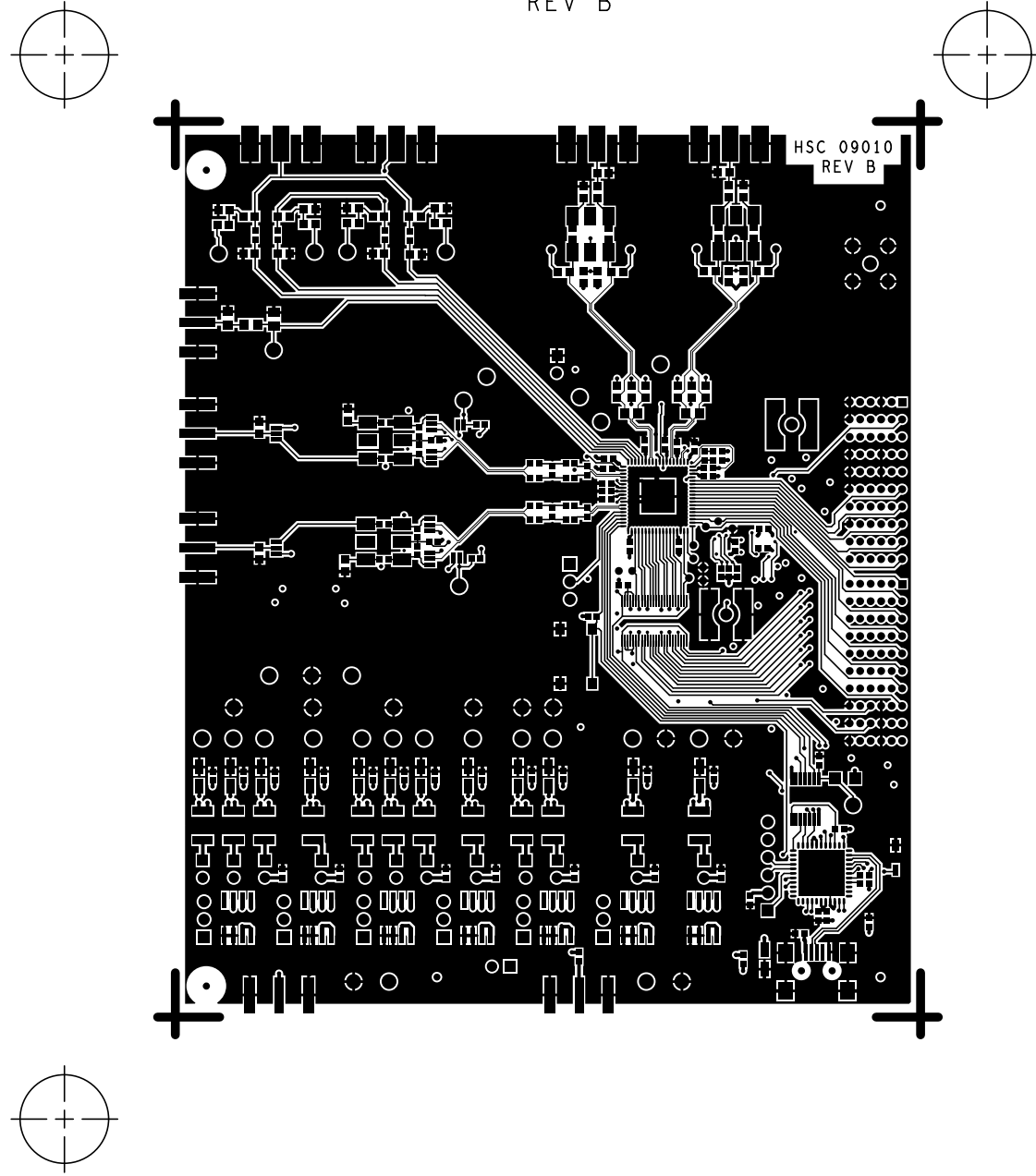
FINISHED HOLES IN MILS				
ALL UNITS ARE IN MILS				
FIGURE	SIZE	PLATED	QTY	TOLERANCE/NOTES
+	10.0	PLATED	67	
□	12.0	PLATED	513	
A	25.0	PLATED	120	
B	30.0	PLATED	14	
C	40.0	PLATED	28	
D	45.0	PLATED	27	
E	55.0	PLATED	5	
F	63.0	PLATED	39	
H	40.0	NON-PLATED	2	
K	155.0	NON-PLATED	2	

UNLESS OTHERWISE SPECIFIED DIMENSIONS ARE IN INCHES		NCDRILL		ANALOG DEVICES		HSC DIVISION 831 WOBURN STREET WILMINGTON, MA 01887	
TOLERANCES		APPROVAL	DATE	TITLE			
DECIMALS	FRACTIONS	DESIGNED	02JUL09	AD9963 EVAL BOARD			
.XX	..010	CHECKED		SIZE	FSCM NO	DRAWING NUMBER	REV
.XXX	..005	APPROVED		C		HSC 09010	B
		MFG ENGINEER		SCALE	1/1		SHEET 1 OF 1

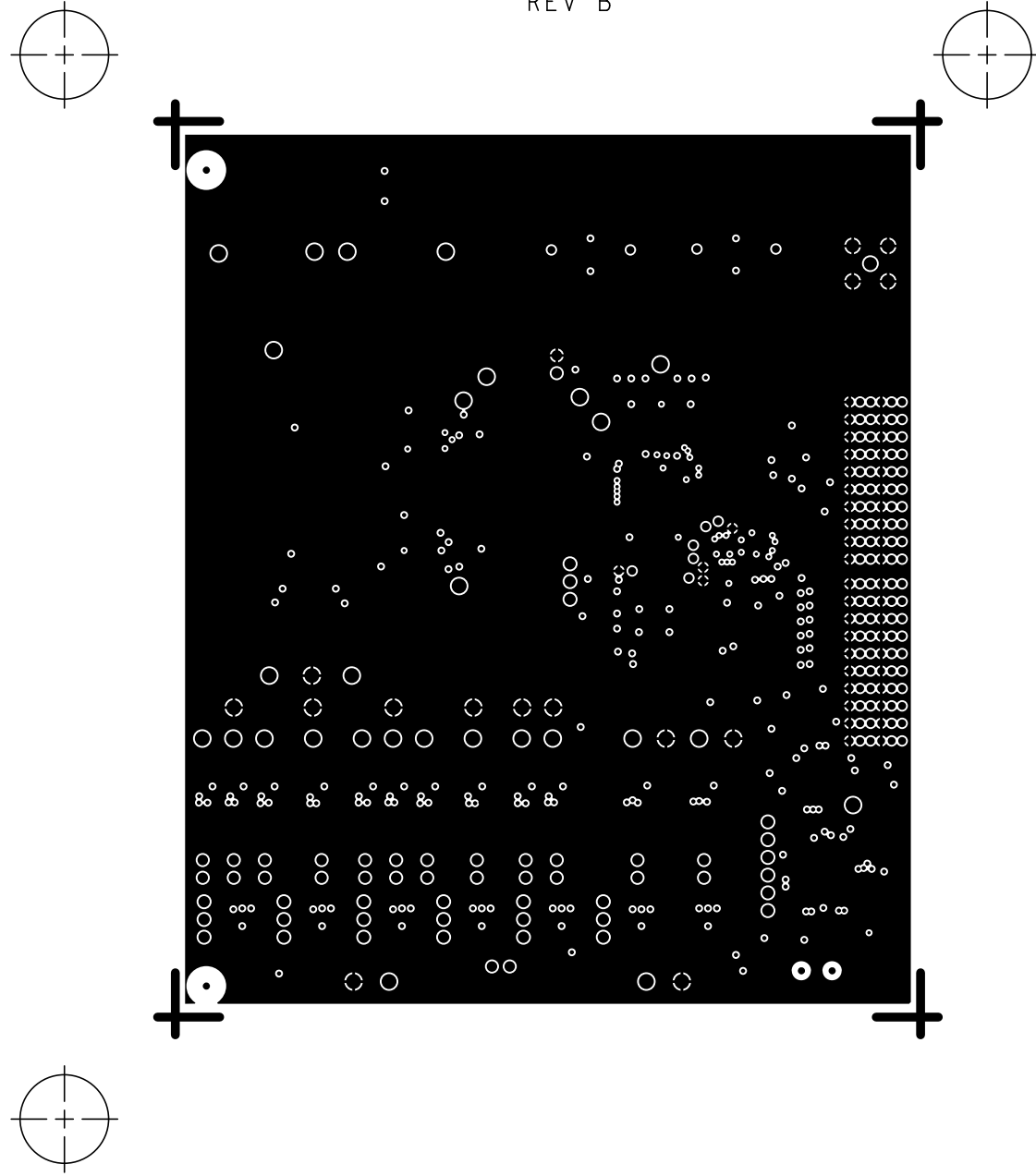
SILKSCREEN SECONDARY
HSC 09010
REV B



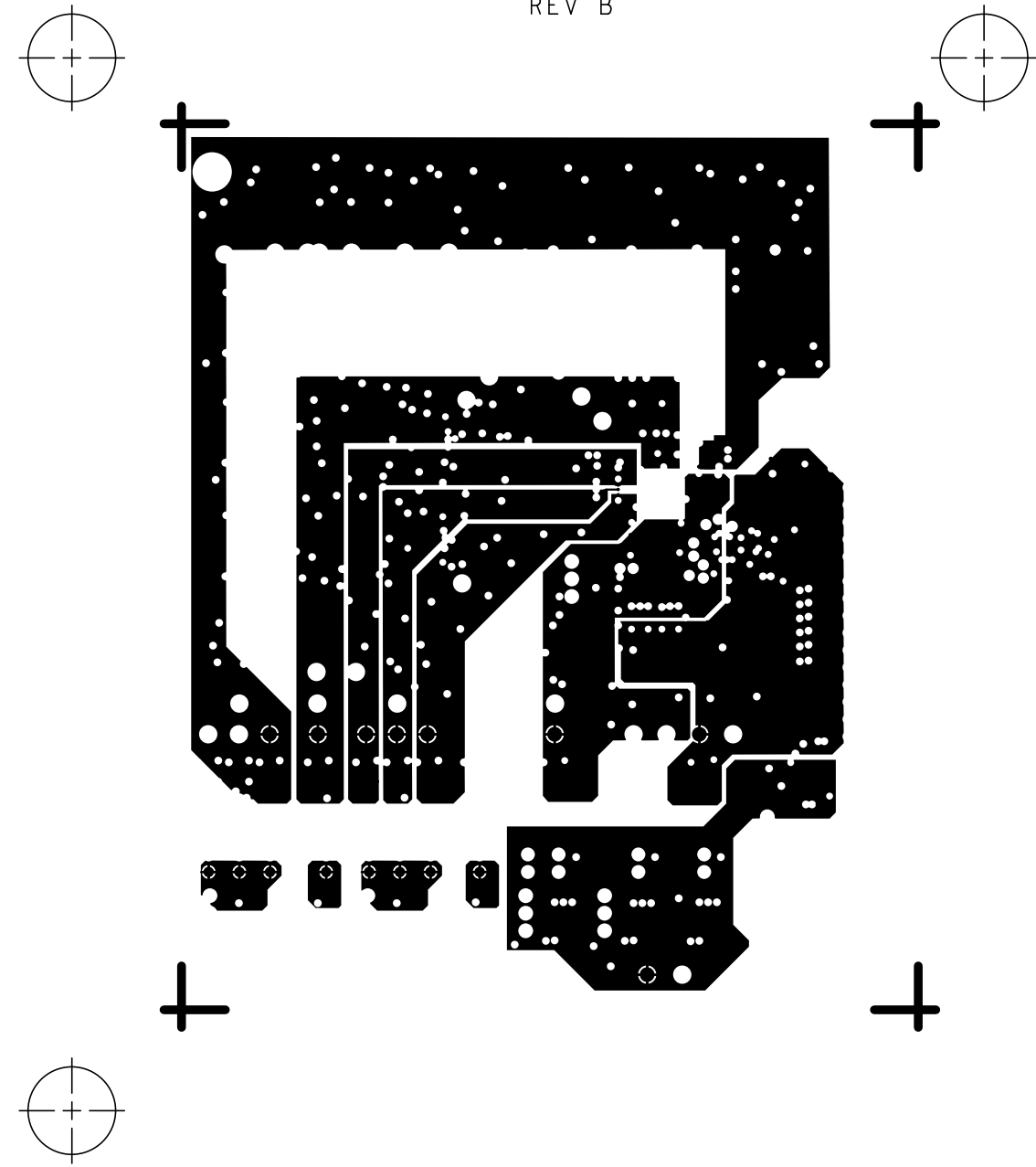
L1 PRIMARY
HSC 09010
REV B



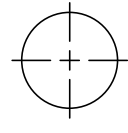
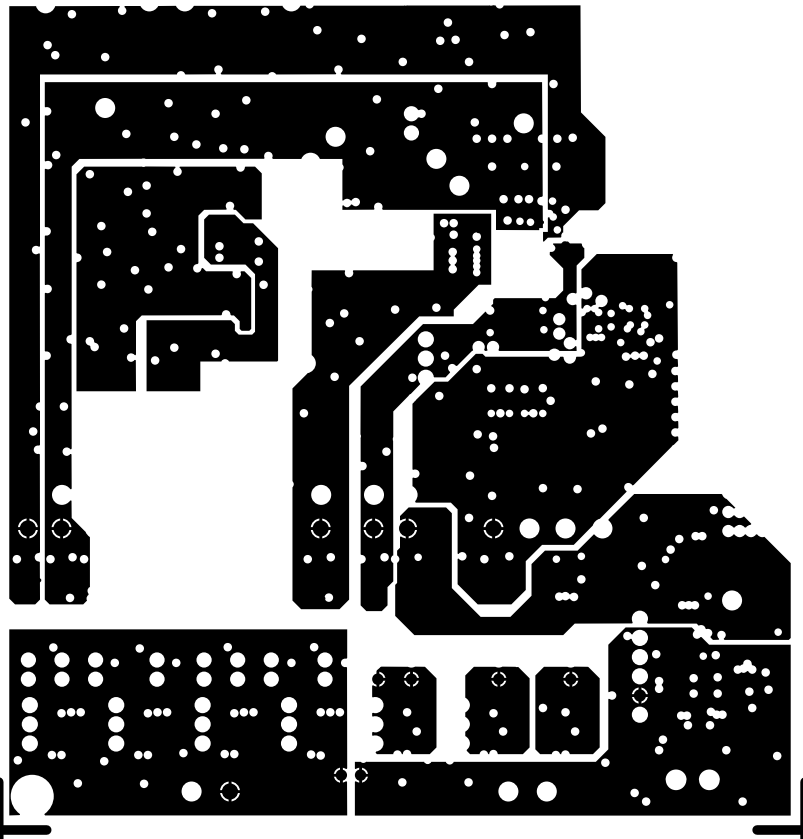
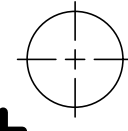
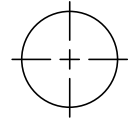
L2 GROUND
HSC 09010
REV B



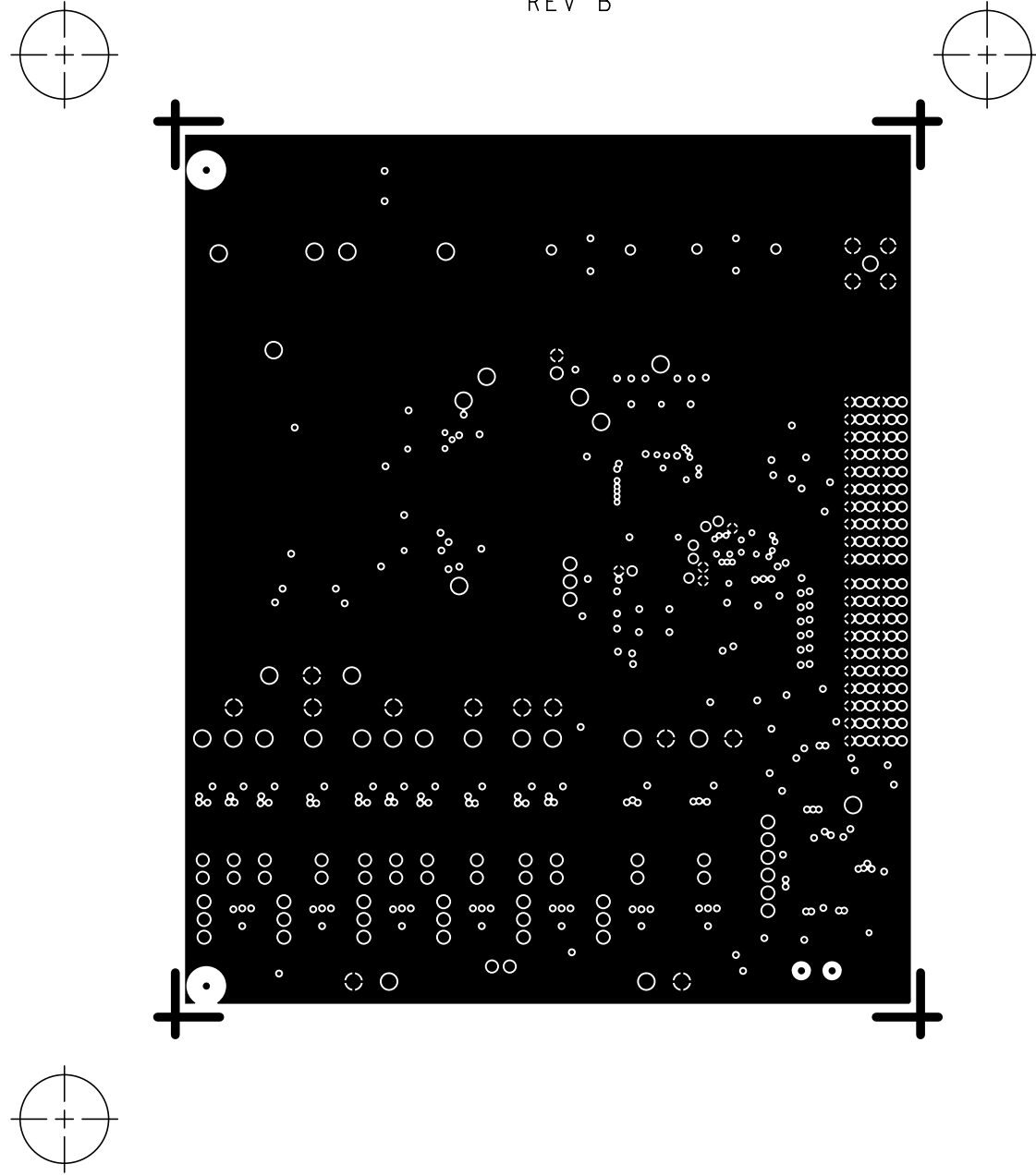
L3 POWER
HSC 09010
REV B



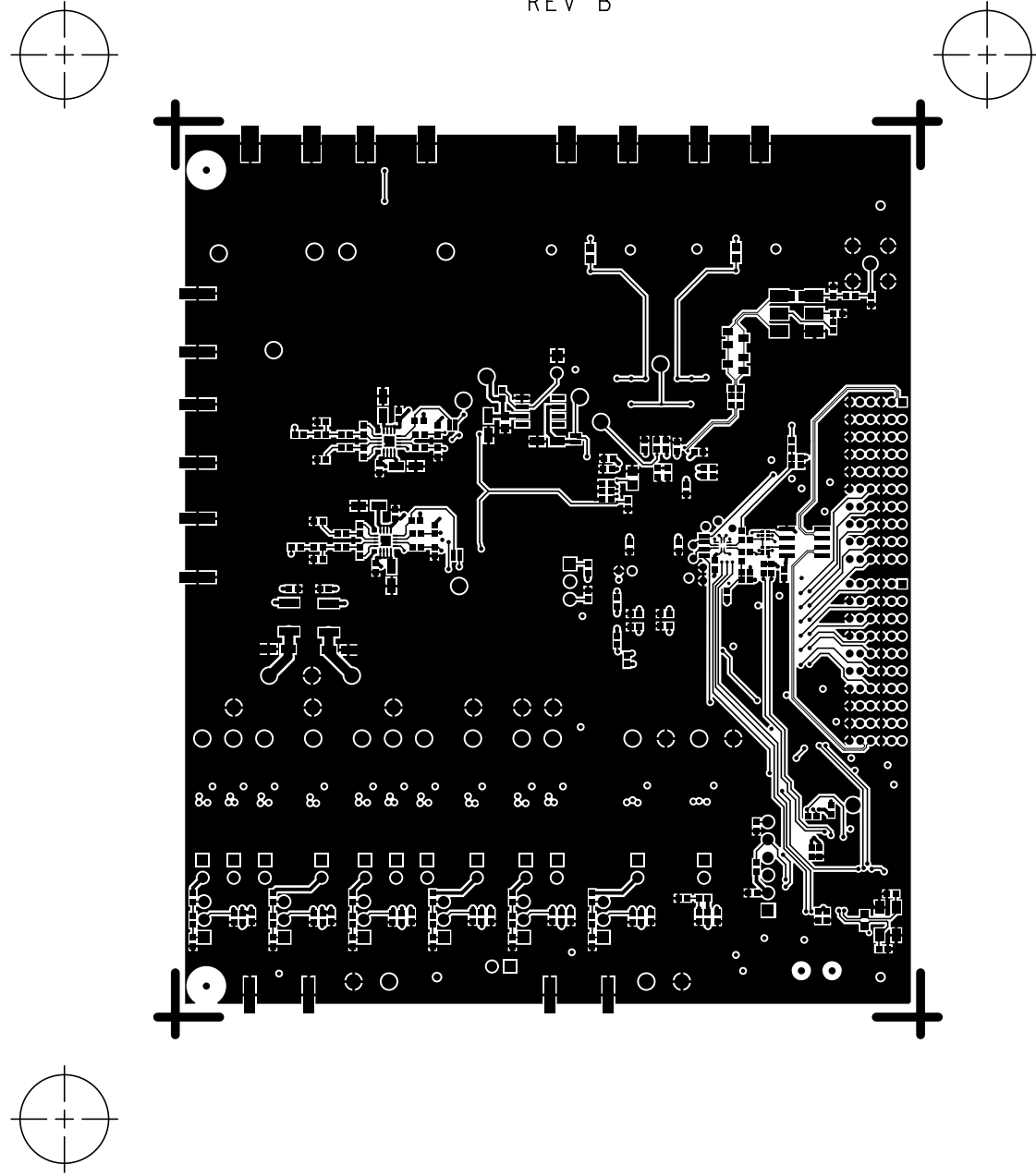
L4 POWER
HSC 09010
REV B



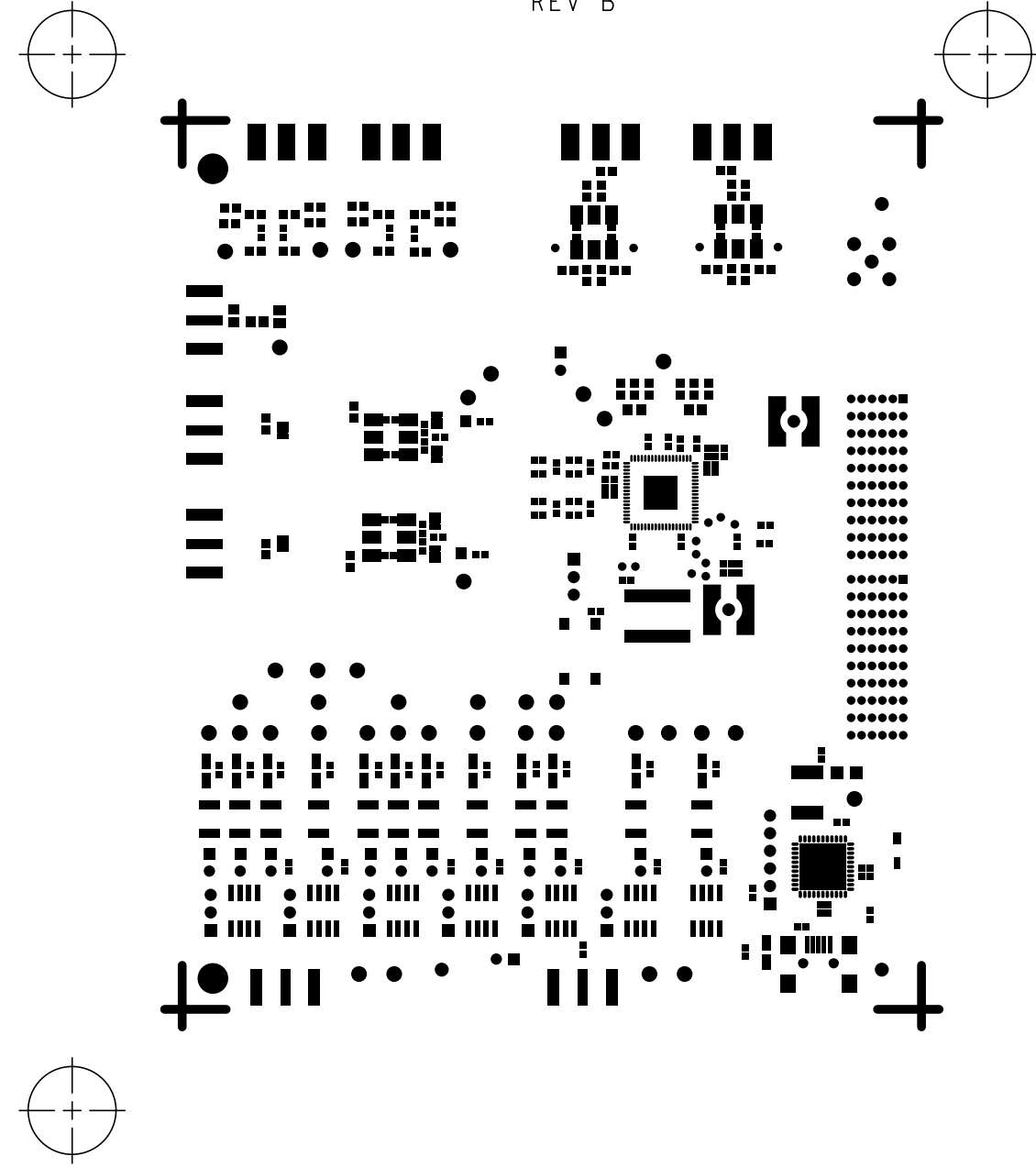
L5 GROUND
HSC 09010
REV B



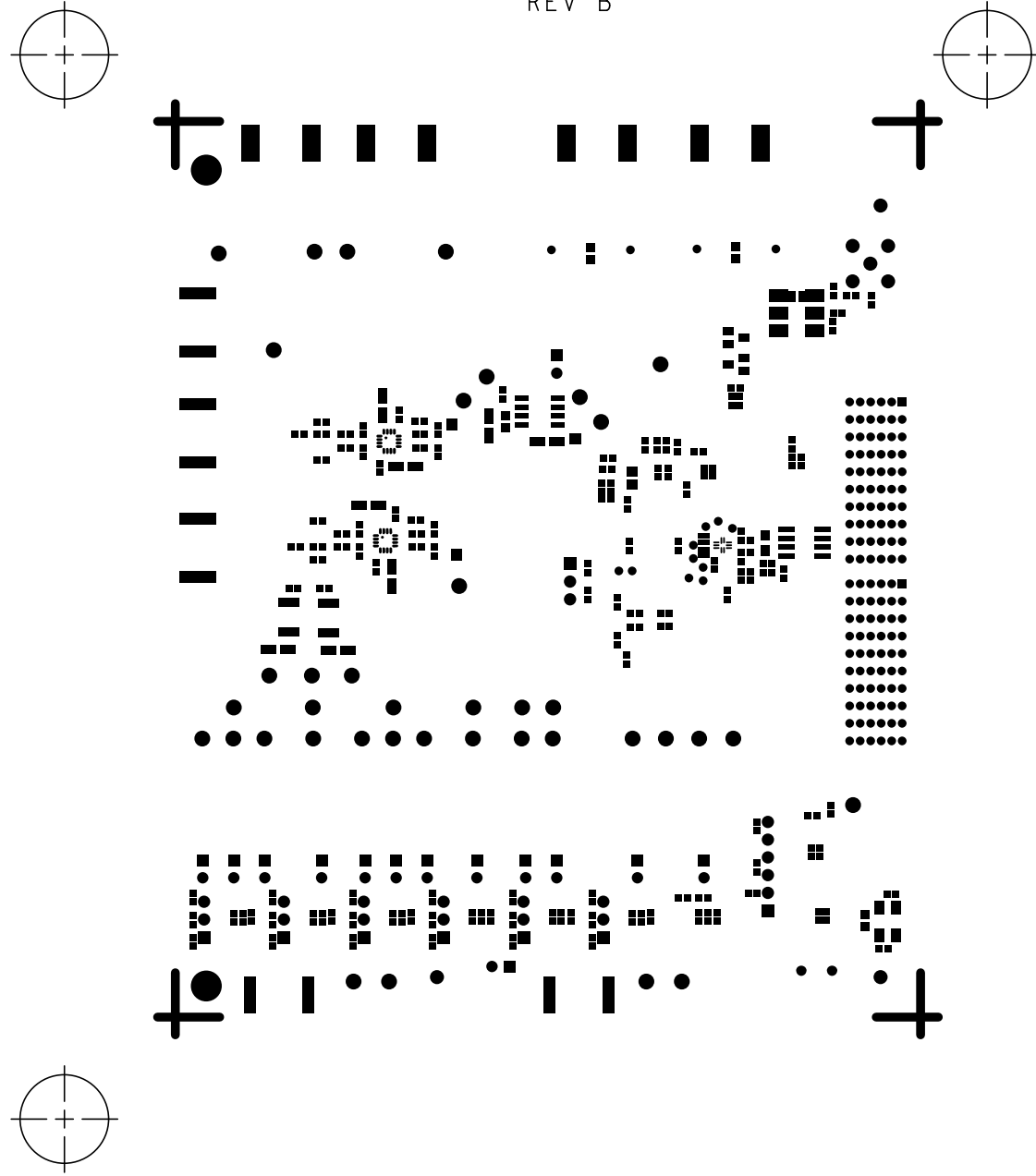
L6 SECONDARY
HSC 09010
REV B



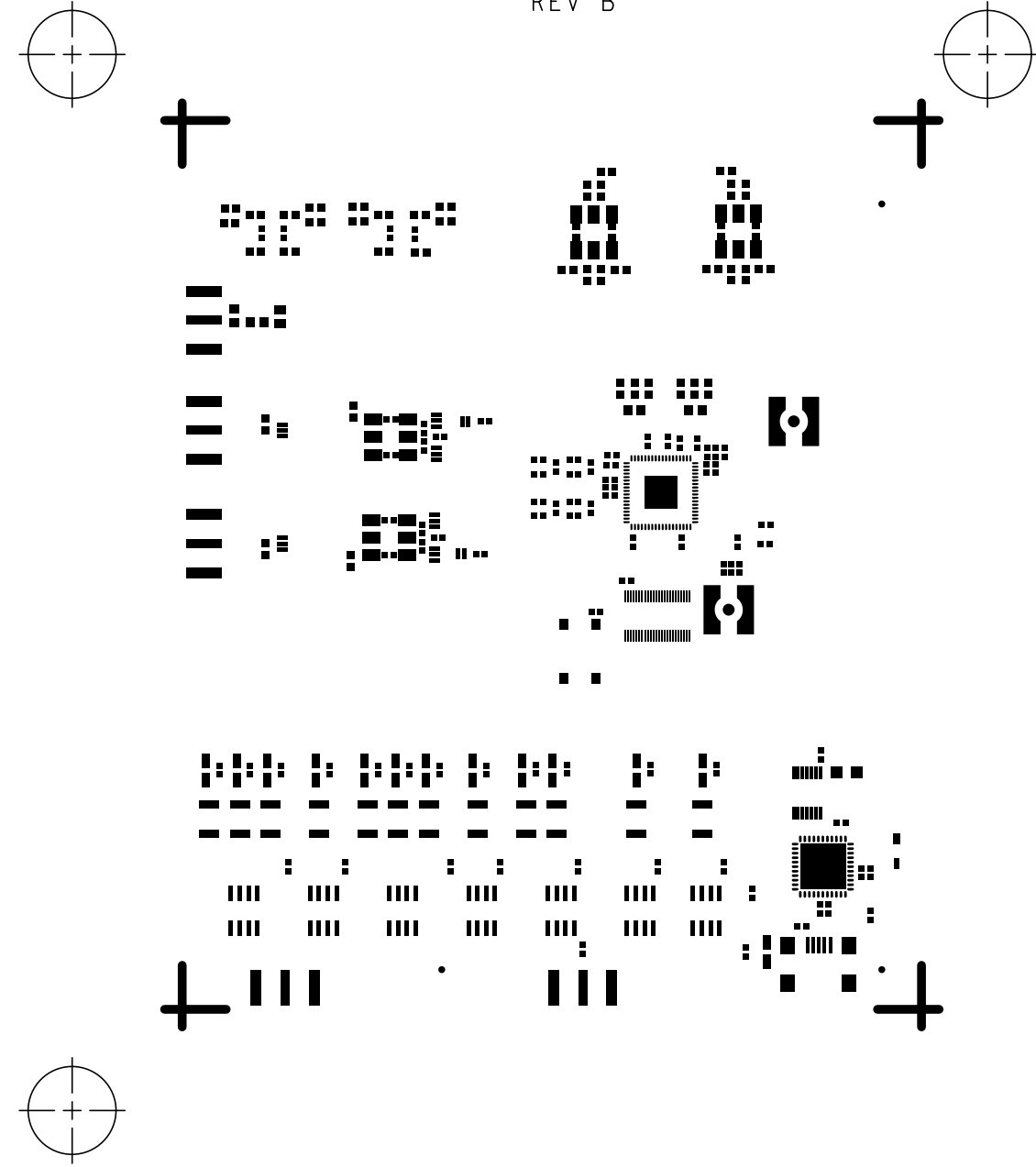
SOLDERMASK PRIMARY
HSC 09010
REV B



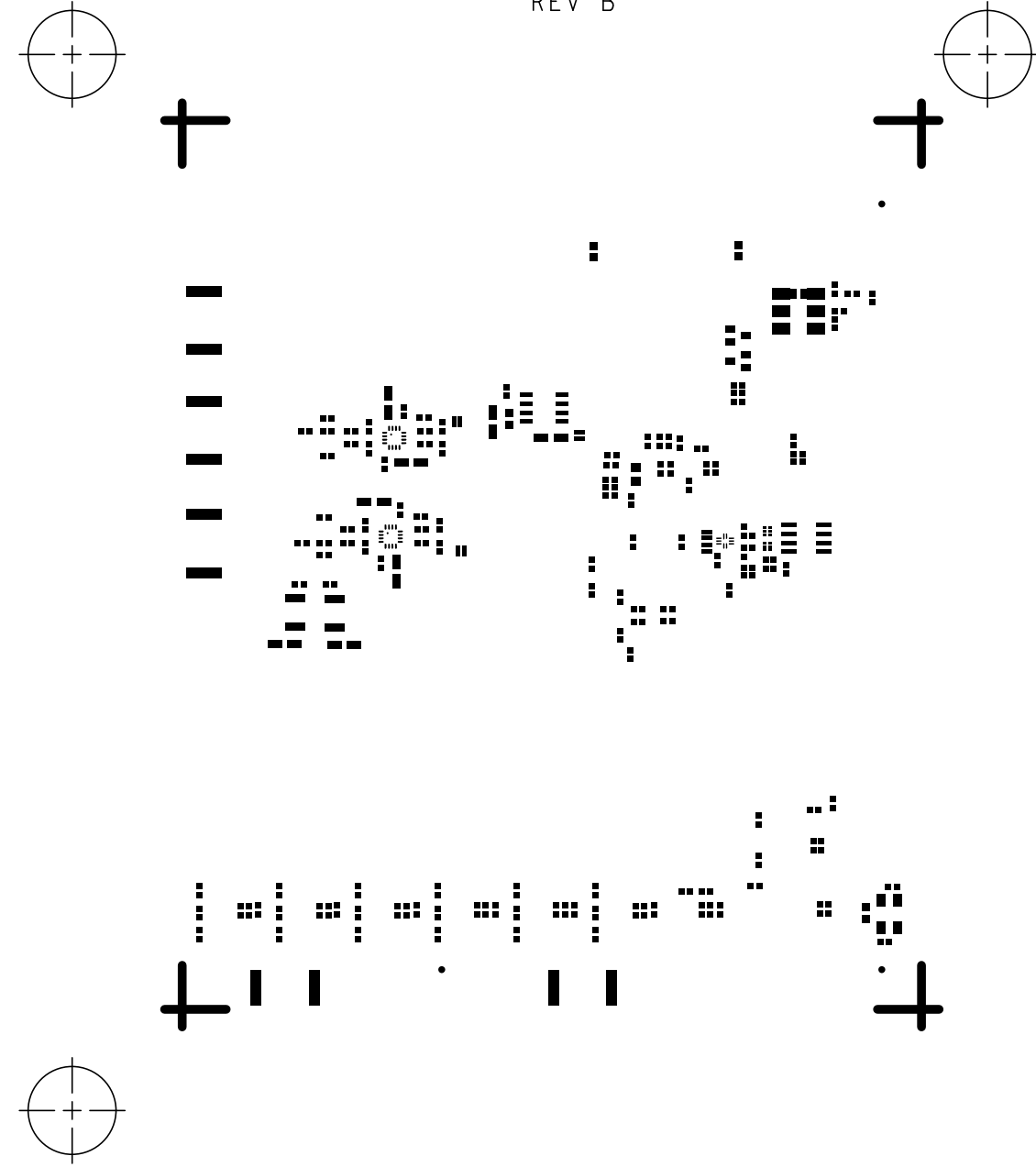
SOLDERMASK SECONDARY
HSC 09010
REV B



PASTEMASK PRIMARY
HSC 09010
REV B



PASTEMASK SECONDARY
HSC 09010
REV B



SILKSCREEN PRIMARY
HSC 09010
REV B

