


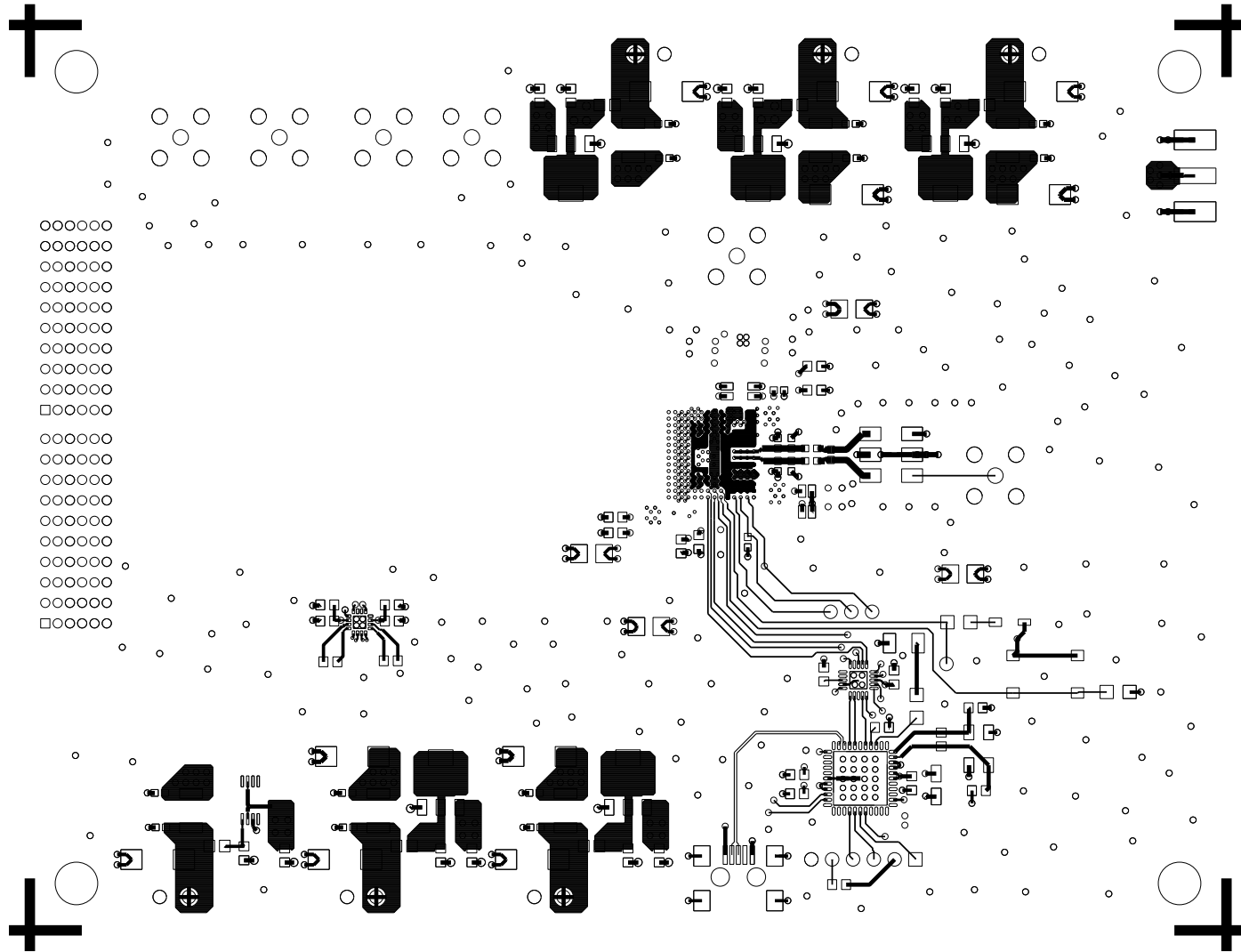
PRIMARY SIDE

DRILLED HOLES LAYER 1 TO LAYER 2

FINISHED HOLES IN MILS				
ALL UNITS ARE IN MILS				
FIGURE	SIZE	PLATED	QTY	TOLERANCE/NOTES
.	6.0	PLATED	32	

 <b>ANALOG DEVICES</b>		HSC DIVISION 804 WOBURN STREET WILMINGTON, MA 01887	
		SIZE <b>C</b>	FSCM NO 
SCALE 1/1		SHEET 2 OF 2	

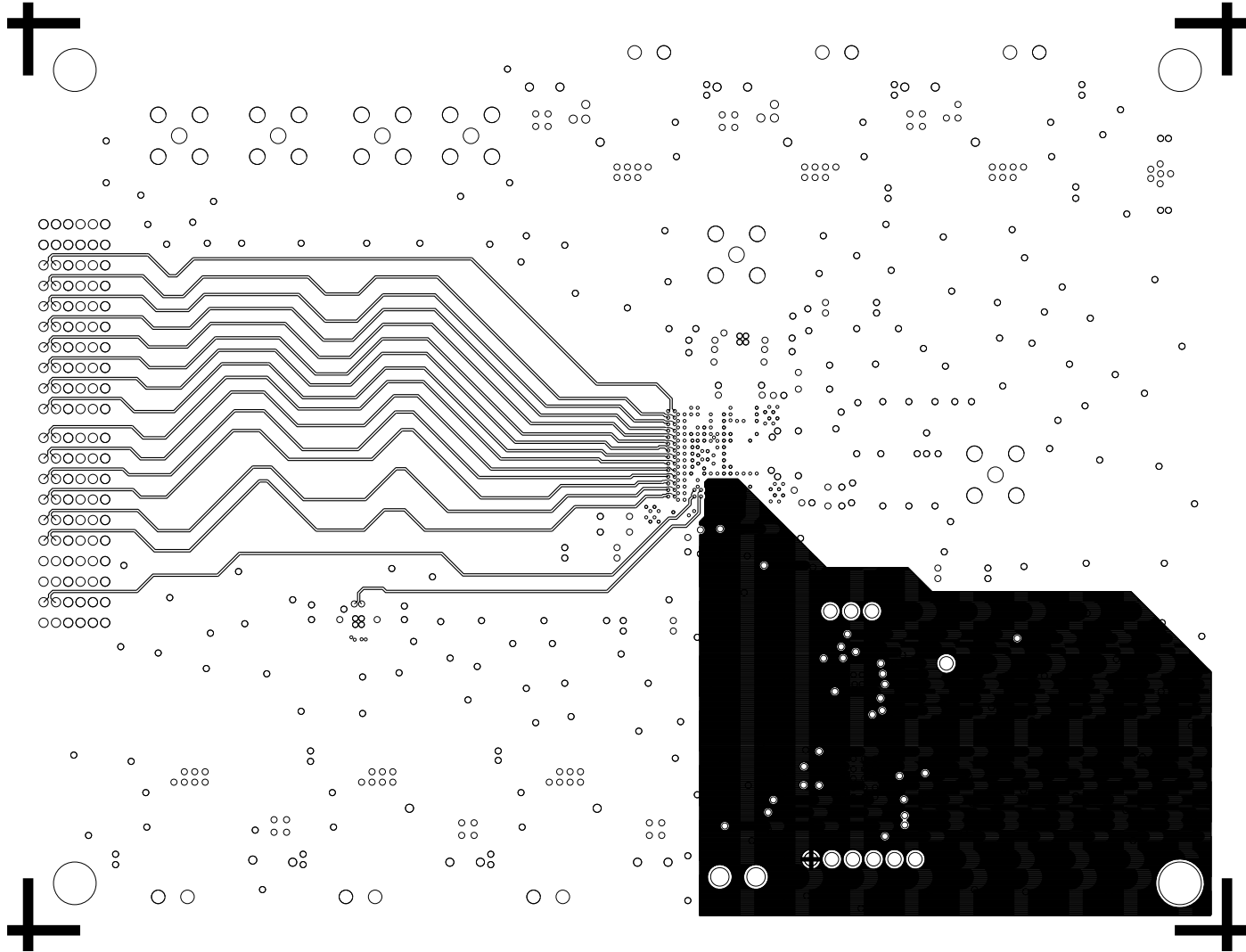
L1 PRIMARY  
08-013014-01  
REV B



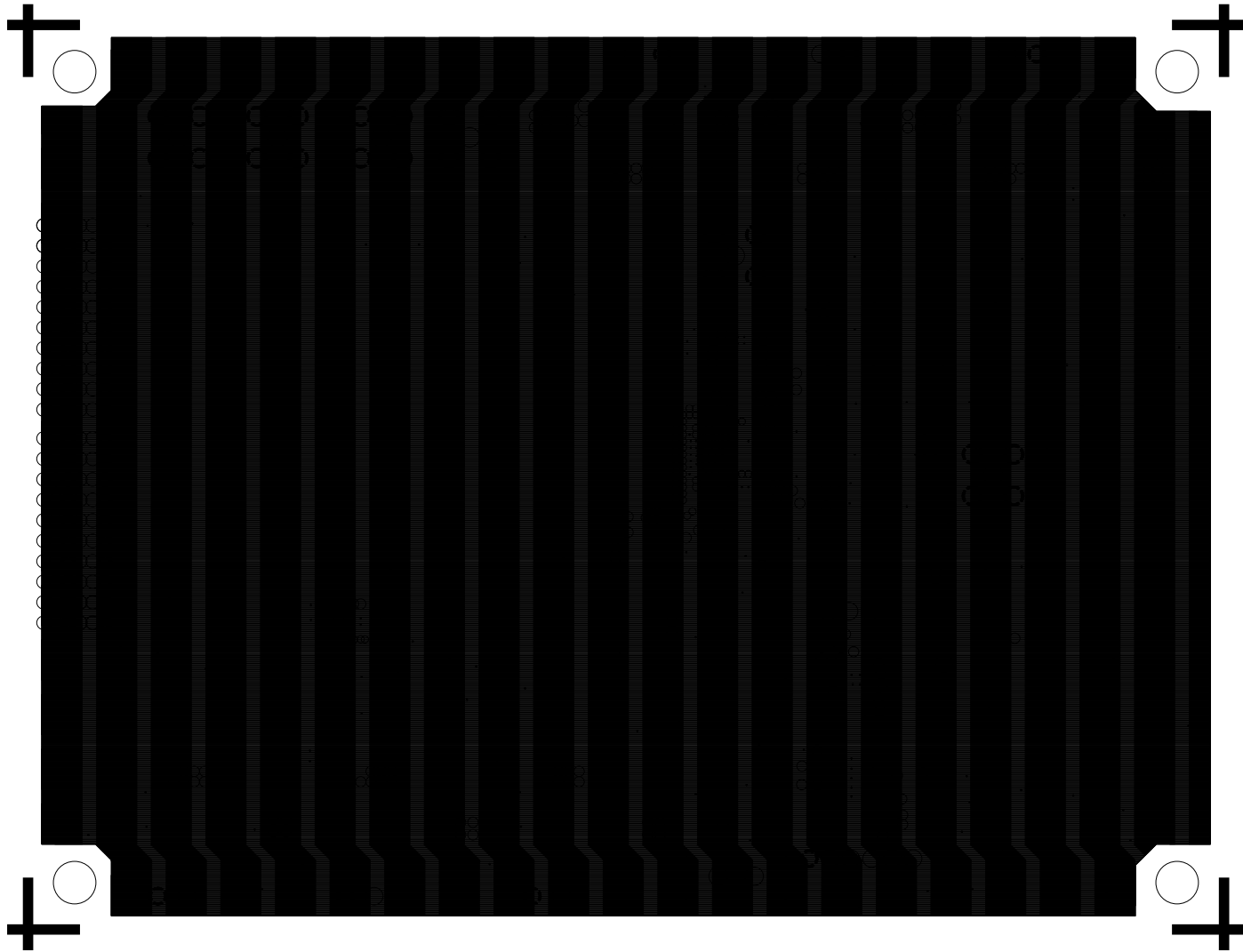
000000  
000000  
000000  
000000  
000000  
000000  
000000  
000000  
000000  
000000  
000000  
□00000  
  
000000  
000000  
000000  
000000  
000000  
000000  
000000  
000000  
000000  
000000  
000000  
□00000



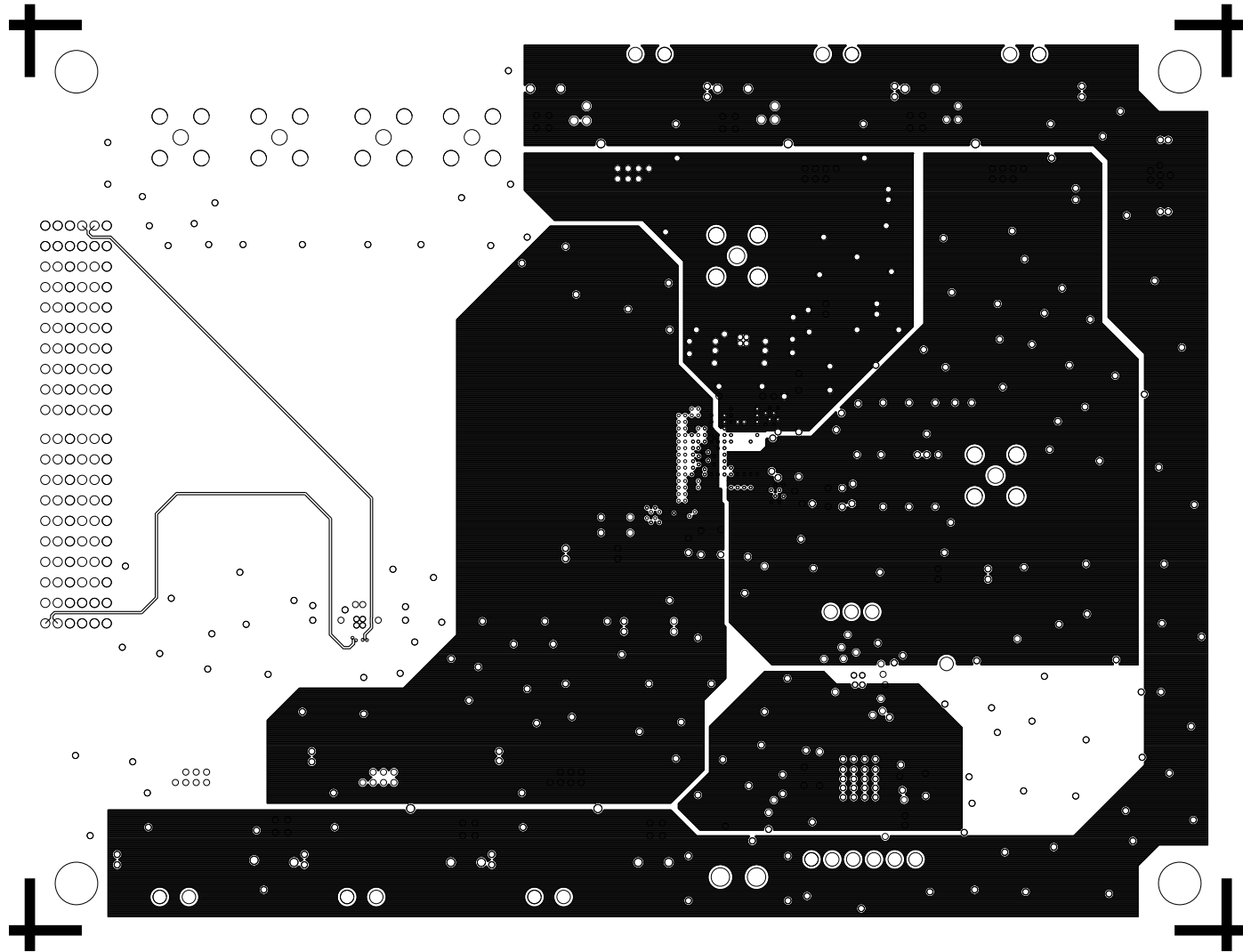
L2SIG  
08-013014-07  
REV B



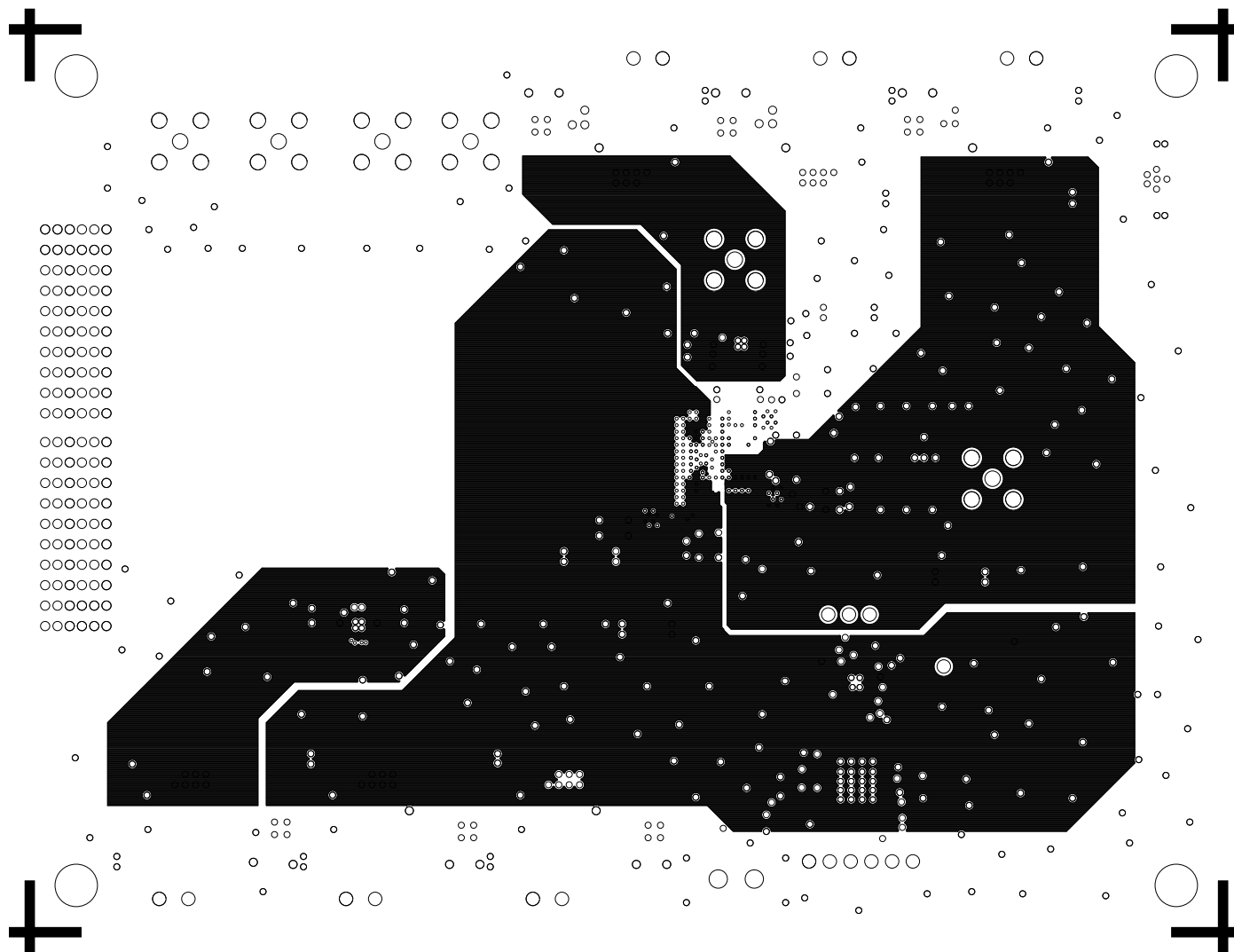
L3GND  
08-013014-08  
REV B



L4PWR  
08-013014-09  
REV B

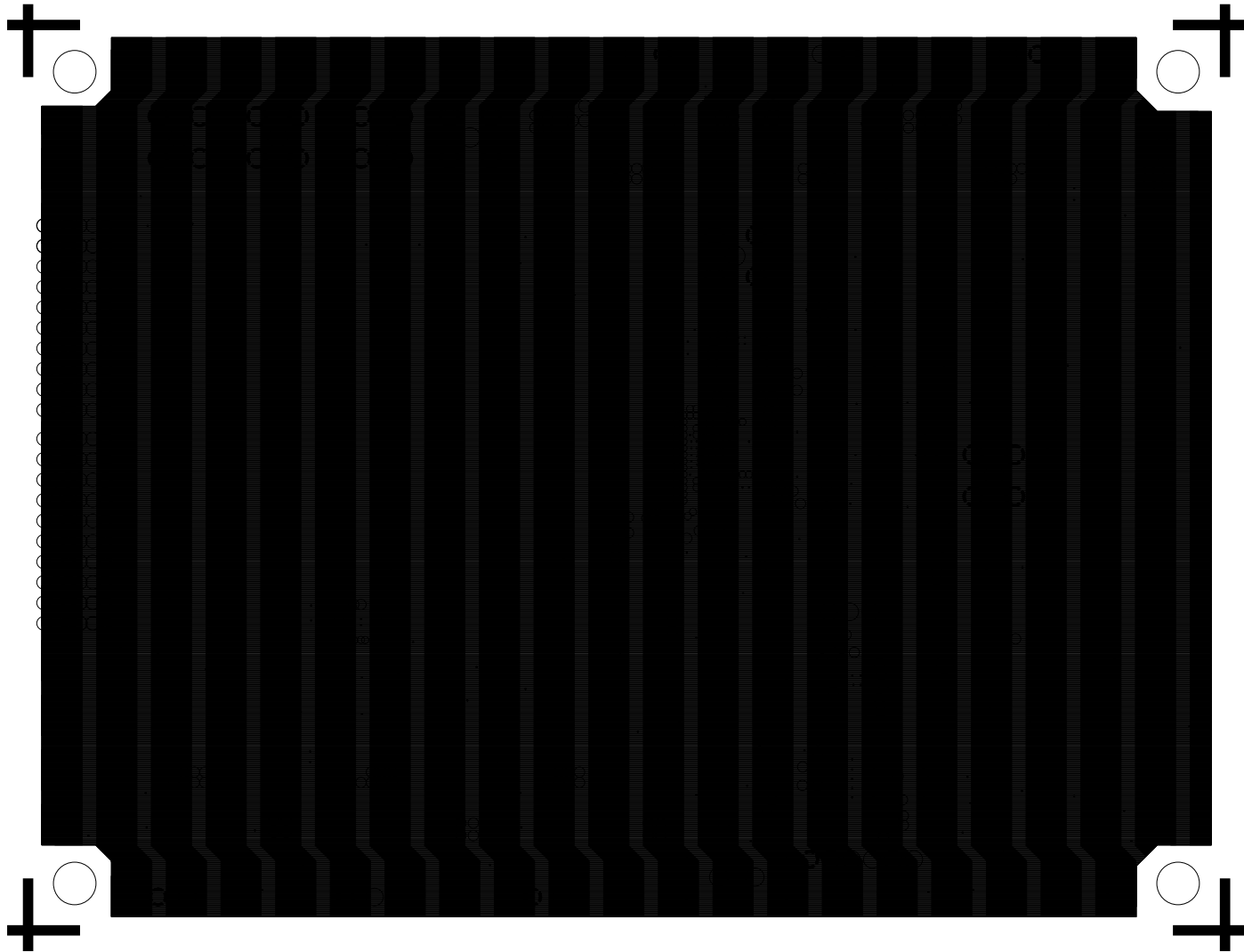


L5PWR  
08-013014-10  
REV B

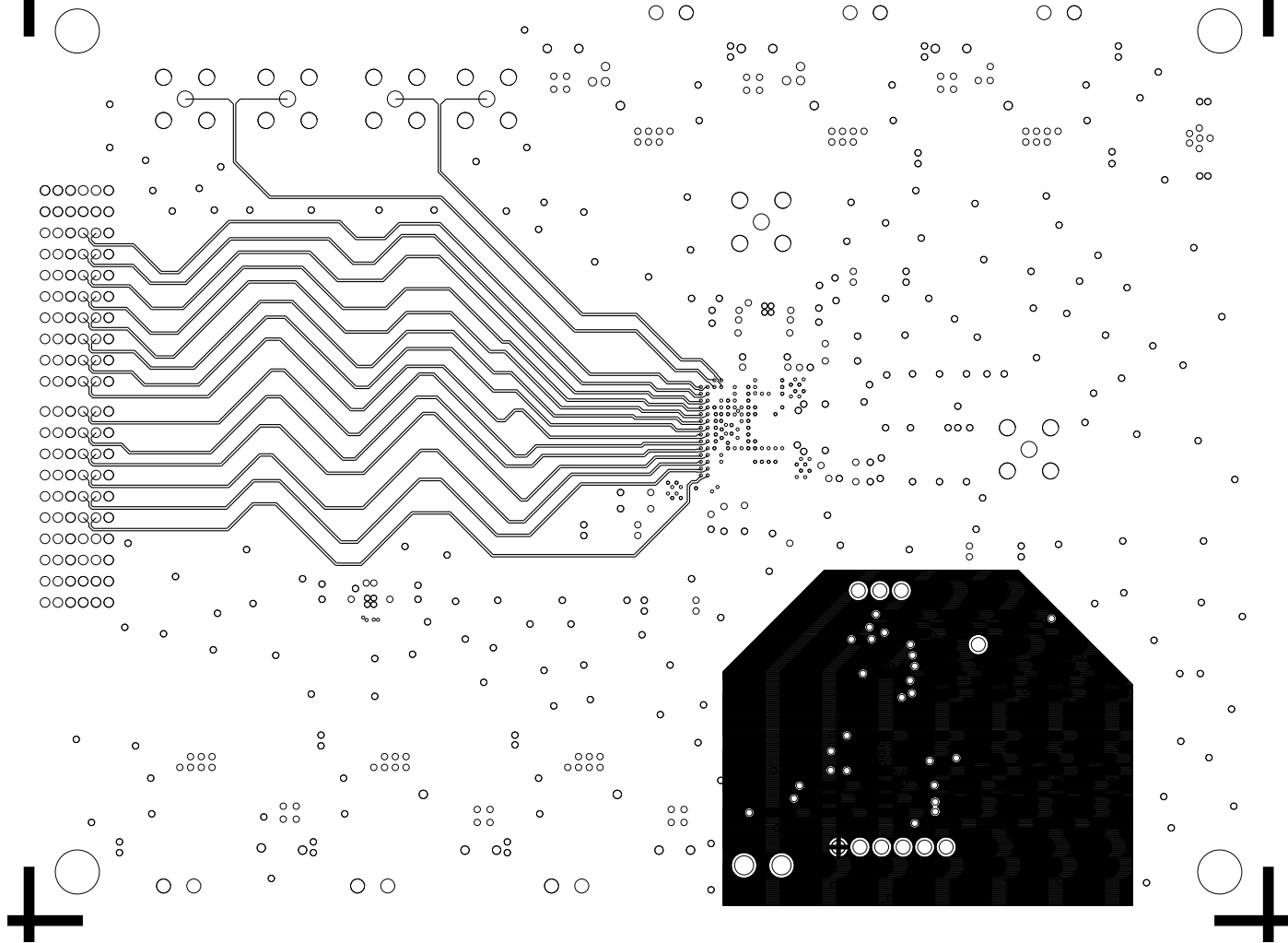




L6GND  
08-013014-11  
REV B



L7SIG  
08-013014-12  
REV B

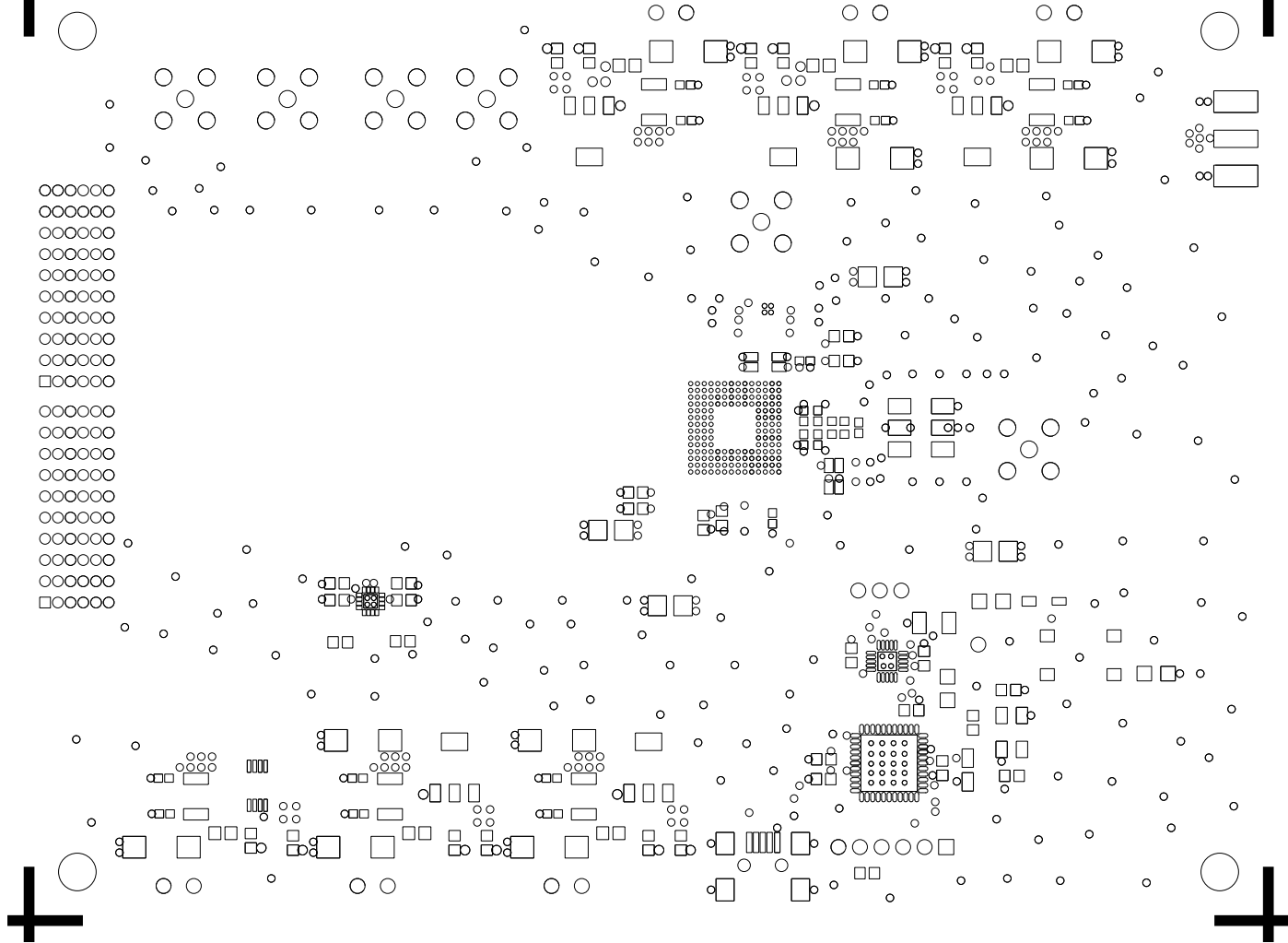




SOLDERMASK PRIMARY

08-013014-04

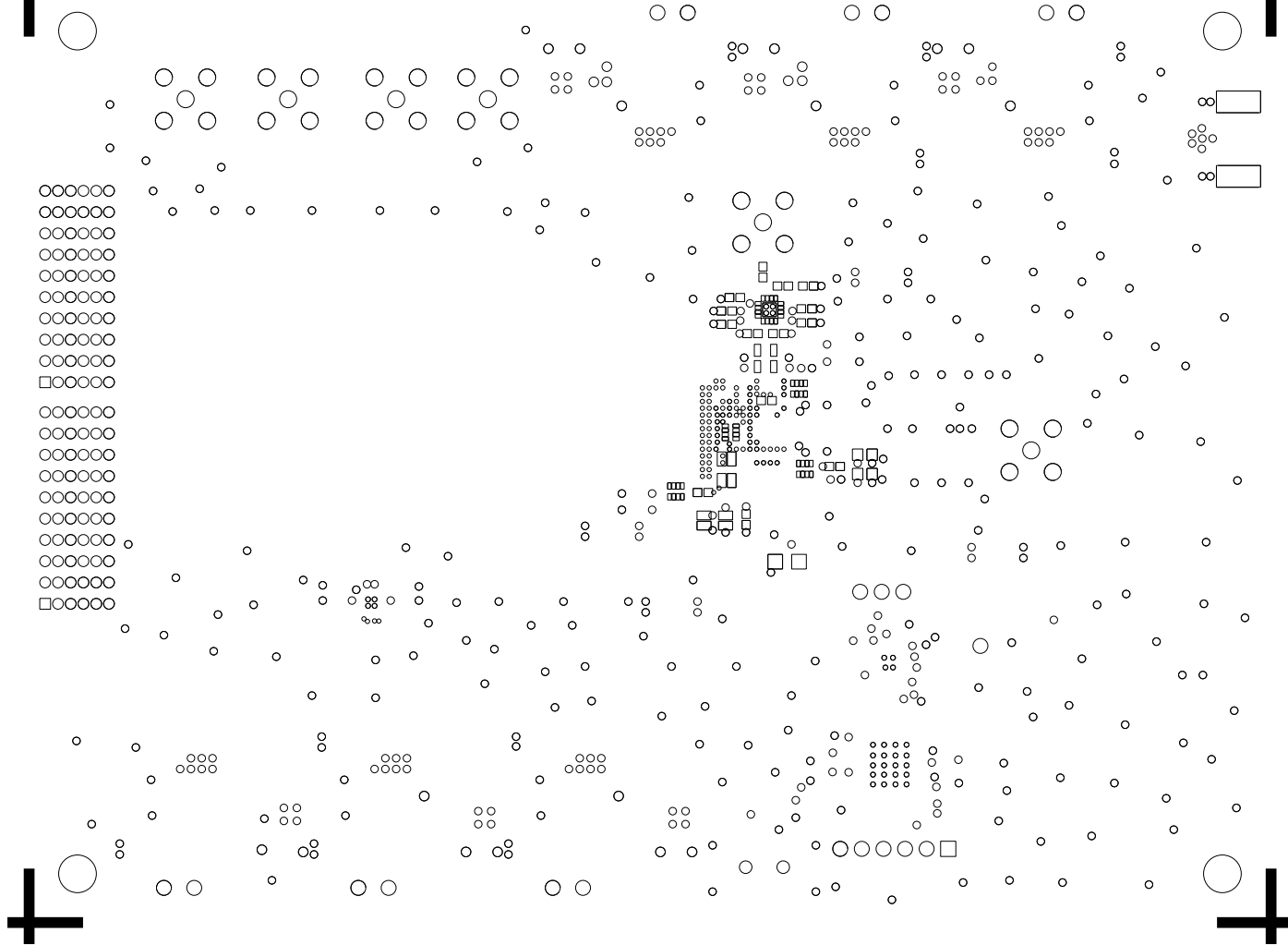
REV B



SOLDERMASK SECONDARY

08-013014-06

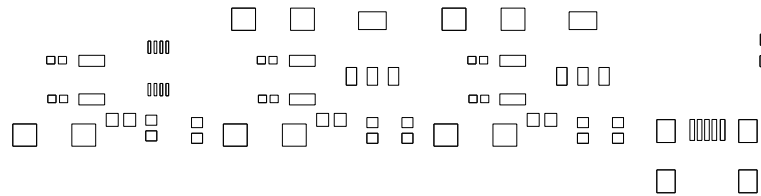
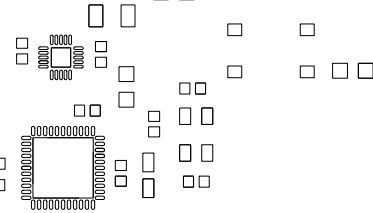
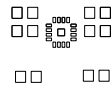
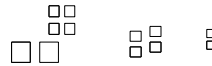
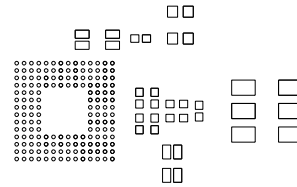
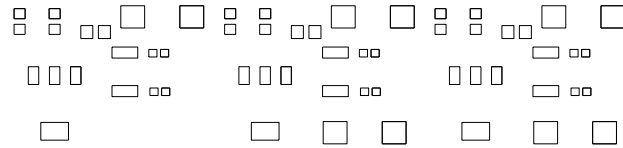
REV B



PASTEMASK PRIMARY

08-013014-13

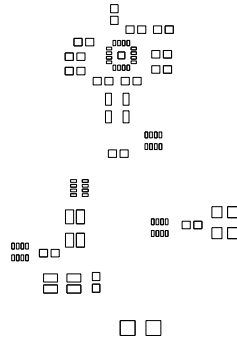
REV B



PASTEMASK SECONDARY

08-013014-14

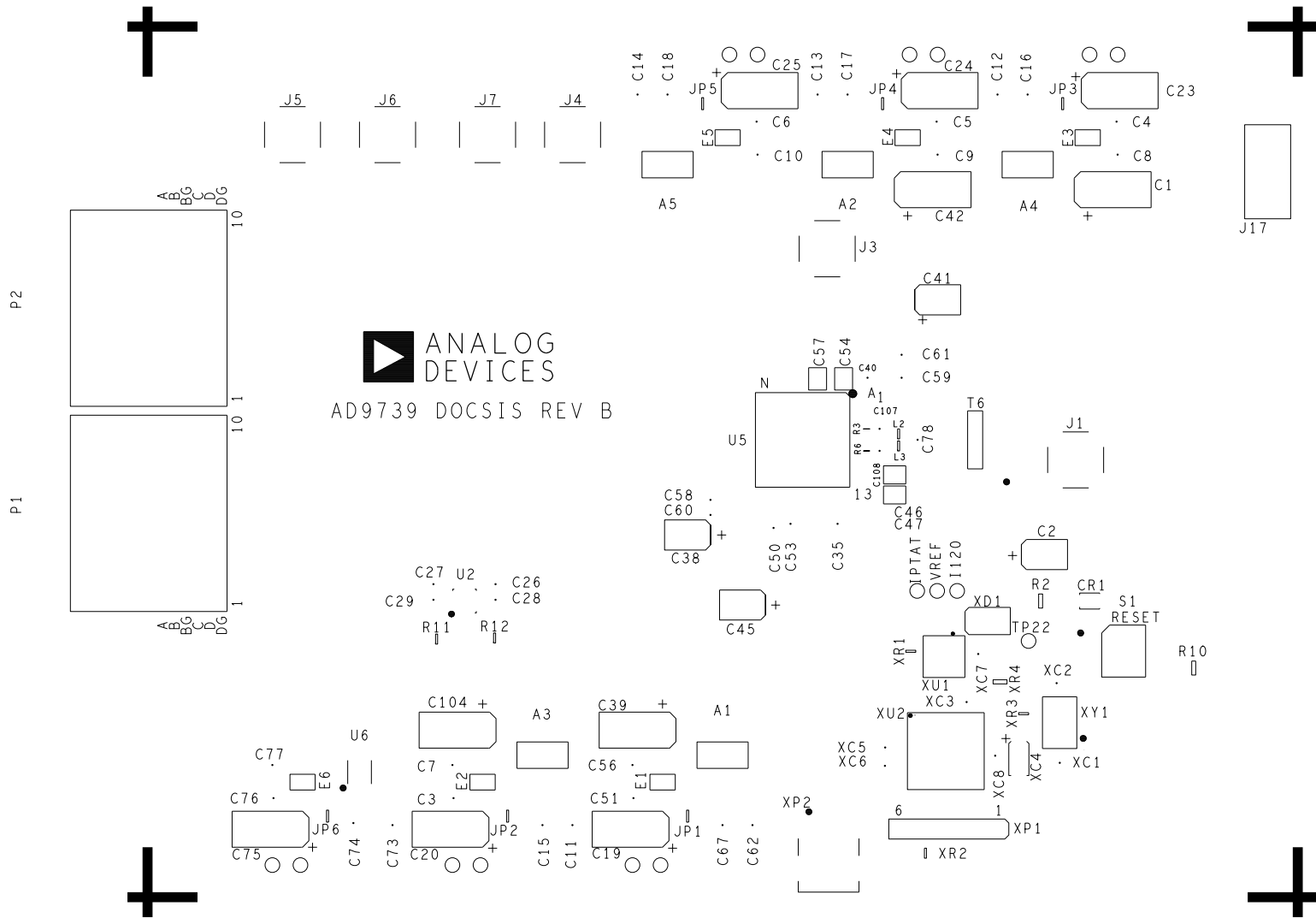
REV B



SILKSCREEN PRIMARY

08-013014-03

REV B



 ANALOG  
DEVICES  
AD9739 DOCSIS REV B



SILKSCREEN SECONDARY

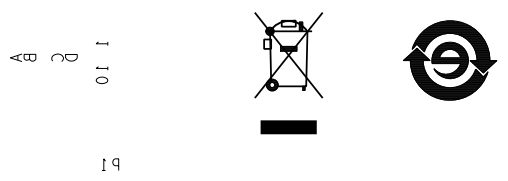
08-013014-05

REV B



12  
18  
24  
30  
36  
42  
48  
54  
60  
66  
72  
78  
84  
90  
96  
102  
108  
114  
120  
126  
132  
138  
144  
150  
156  
162  
168  
174  
180  
186  
192  
198  
204  
210  
216  
222  
228  
234  
240  
246  
252  
258  
264  
270  
276  
282  
288  
294  
300  
306  
312  
318  
324  
330  
336  
342  
348  
354  
360  
366  
372  
378  
384  
390  
396  
402  
408  
414  
420  
426  
432  
438  
444  
450  
456  
462  
468  
474  
480  
486  
492  
498  
504  
510  
516  
522  
528  
534  
540  
546  
552  
558  
564  
570  
576  
582  
588  
594  
600  
606  
612  
618  
624  
630  
636  
642  
648  
654  
660  
666  
672  
678  
684  
690  
696  
702  
708  
714  
720  
726  
732  
738  
744  
750  
756  
762  
768  
774  
780  
786  
792  
798  
804  
810  
816  
822  
828  
834  
840  
846  
852  
858  
864  
870  
876  
882  
888  
894  
900  
906  
912  
918  
924  
930  
936  
942  
948  
954  
960  
966  
972  
978  
984  
990  
996  
1002  
1008  
1014  
1020  
1026  
1032  
1038  
1044  
1050  
1056  
1062  
1068  
1074  
1080  
1086  
1092  
1098  
1104  
1110  
1116  
1122  
1128  
1134  
1140  
1146  
1152  
1158  
1164  
1170  
1176  
1182  
1188  
1194  
1200  
1206  
1212  
1218  
1224  
1230  
1236  
1242  
1248  
1254  
1260  
1266  
1272  
1278  
1284  
1290  
1296  
1302  
1308  
1314  
1320  
1326  
1332  
1338  
1344  
1350  
1356  
1362  
1368  
1374  
1380  
1386  
1392  
1398  
1404  
1410  
1416  
1422  
1428  
1434  
1440  
1446  
1452  
1458  
1464  
1470  
1476  
1482  
1488  
1494  
1500  
1506  
1512  
1518  
1524  
1530  
1536  
1542  
1548  
1554  
1560  
1566  
1572  
1578  
1584  
1590  
1596  
1602  
1608  
1614  
1620  
1626  
1632  
1638  
1644  
1650  
1656  
1662  
1668  
1674  
1680  
1686  
1692  
1698  
1704  
1710  
1716  
1722  
1728  
1734  
1740  
1746  
1752  
1758  
1764  
1770  
1776  
1782  
1788  
1794  
1800  
1806  
1812  
1818  
1824  
1830  
1836  
1842  
1848  
1854  
1860  
1866  
1872  
1878  
1884  
1890  
1896  
1902  
1908  
1914  
1920  
1926  
1932  
1938  
1944  
1950  
1956  
1962  
1968  
1974  
1980  
1986  
1992  
1998  
2004  
2010  
2016  
2022  
2028  
2034  
2040  
2046  
2052  
2058  
2064  
2070  
2076  
2082  
2088  
2094  
2100  
2106  
2112  
2118  
2124  
2130  
2136  
2142  
2148  
2154  
2160  
2166  
2172  
2178  
2184  
2190  
2196  
2202  
2208  
2214  
2220  
2226  
2232  
2238  
2244  
2250  
2256  
2262  
2268  
2274  
2280  
2286  
2292  
2298  
2304  
2310  
2316  
2322  
2328  
2334  
2340  
2346  
2352  
2358  
2364  
2370  
2376  
2382  
2388  
2394  
2400  
2406  
2412  
2418  
2424  
2430  
2436  
2442  
2448  
2454  
2460  
2466  
2472  
2478  
2484  
2490  
2496  
2502  
2508  
2514  
2520  
2526  
2532  
2538  
2544  
2550  
2556  
2562  
2568  
2574  
2580  
2586  
2592  
2598  
2604  
2610  
2616  
2622  
2628  
2634  
2640  
2646  
2652  
2658  
2664  
2670  
2676  
2682  
2688  
2694  
2700  
2706  
2712  
2718  
2724  
2730  
2736  
2742  
2748  
2754  
2760  
2766  
2772  
2778  
2784  
2790  
2796  
2802  
2808  
2814  
2820  
2826  
2832  
2838  
2844  
2850  
2856  
2862  
2868  
2874  
2880  
2886  
2892  
2898  
2904  
2910  
2916  
2922  
2928  
2934  
2940  
2946  
2952  
2958  
2964  
2970  
2976  
2982  
2988  
2994  
3000

115



1  
DC  
C  
B  
A

