

8 7 6 5 4 3 2 1

REVISIONS			
REV	DESCRIPTION	DATE	APPROVED
A	INITIAL RELEASE	05NOV13	M. V.
C	DOCUMENTATION UPDATE	24JAN14	M. V.

UNLESS OTHERWISE SPECIFIED DIMENSIONS ARE IN INCHES DECIMALS FRACTIONS ANGLES .XX .XX .000 .XX .1/32 . . .	ASSEMBLY	APPROVAL	DATE	TITLE
		DRAWN BY W. D. B.	05NOV13	AD9142A-M5372 EBZ EVALUATION BOARD
MATERIAL		RETURNED	CHECKED	
FINISH		APPROVED	WPG ENGINEER	
DO NOT SCALE DWG		SCALE	1/1	SHEET 1 OF 1

ANALOG DEVICES		HSC DIVISION 804 WILMINGTON STREET WILMINGTON, MA 01887	
AD9142A-M5372 EBZ EVALUATION BOARD		FSCM NO	DRAWING NUMBER
		D	HSC 13047
		SIZE	REV
		D	C

PRIMARY SIDE

SECONDARY SIDE

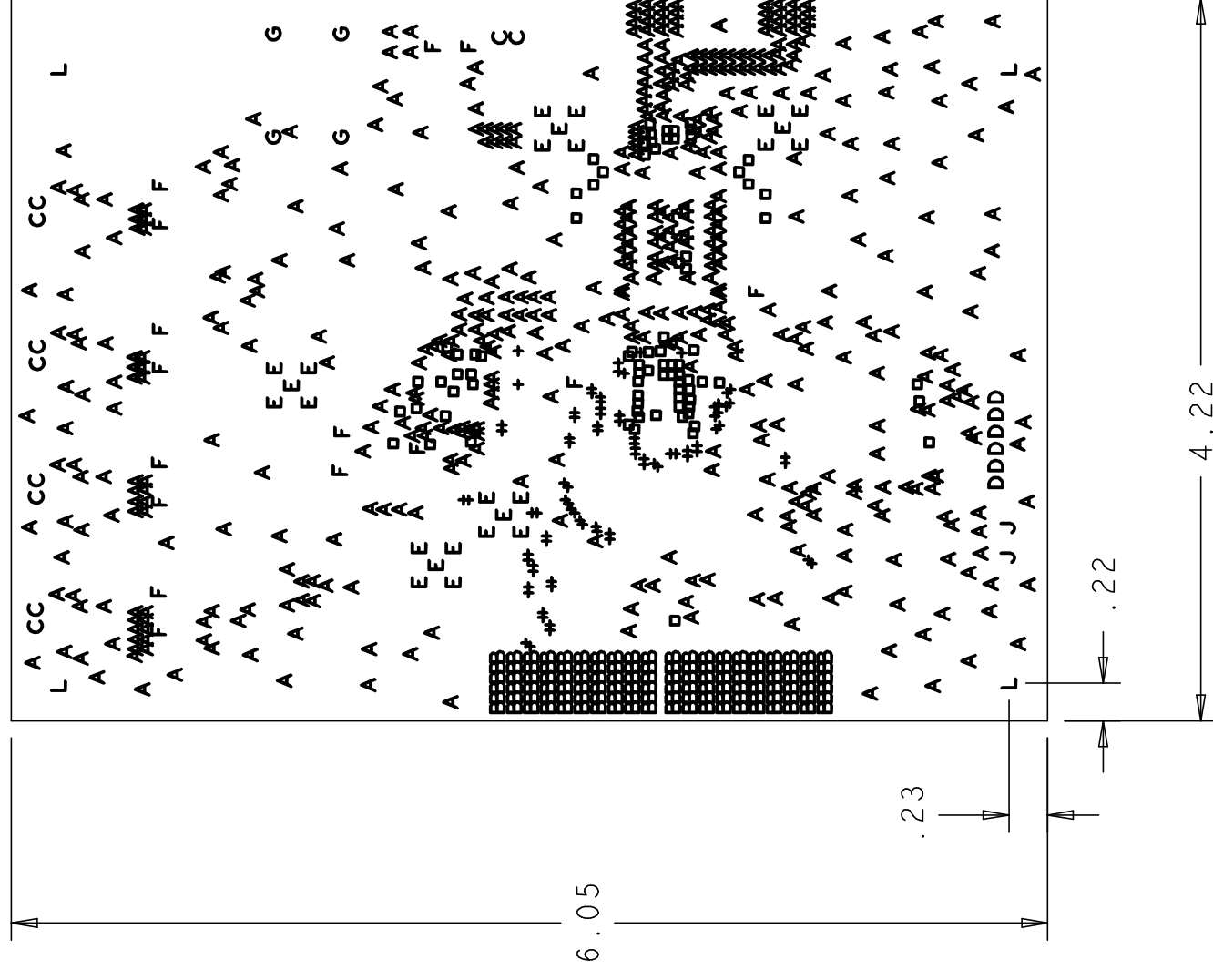
D C B A

REVISIONS		
REV	DESCRIPTION	DATE
A	INITIAL RELEASE	05NOV13
C	DOCUMENTATION UPDATE	24JAN14

NOTES:

MATERIALS:
 FR-4, PCL-370HR IN ACCORDANCE WITH IS410 (LATEST REV.). GLASS FABRIC BASE, EPOXY RESIN, FIRE RESISTANT.
 PREIMPREGNATED B STAGE EPOXY GLASS CLOTH IN ACCORDANCE WITH IPC-L-109 (LATEST REV.).
BONDING AGENT: COPPER, OVERPLATE TO 1 1/2 OZ.
CLADDING: INTERNAL PLANE LAYERS 1 OZ. COPPER.
 SHALL BE BLUE LIQUID PHOTOIMAGABLE (LPI) APPLIED ON BOTH SIDES OVER BARE COPPER AND SHALL MEET IPC-SM-840 (LATEST REV.) CLASS 3.
SOLDER MASK: SHALL BE PERMANENT NON-CONDUCTIVE EPOXY INK, COLOR WHITE.
SILK SCREEN: U.L. RATING: 94V0 MINIMUM.

FABRICATION:
 1. REFER TO IPC-6010 SERIES (LATEST REV.), CLASS 2 FOR FABRICATION UNLESS OTHERWISE SPECIFIED.
 2. UNDIMENSIONED HOLES TO BE LOCATED WITHIN +/- .005 OF THEIR TRUE POSITION WITH RESPECT TO ARTWORK.
 3. PLATED HOLE WALL THICKNESS SHALL NOT BE LESS THAN .001 INCH MINIMUM AVERAGE, WITH NO READING LESS THAN .0008 BY CROSS SECTION.
 4. HOLE DIAMETERS APPLY AFTER PLATING.
 5. FINISHED CONDUCTOR WIDTHS SHALL NOT BE REDUCED FROM THE NOMINAL, INDICATED ON THE MASTER PATTERN, BY MORE THAN THE CONDUCTOR THICKNESS.
 6. MINIMUM DESIGN LINE WIDTH IS .005 INCH.
 7. MINIMUM DESIGN SPACING IS .005 INCH.
 8. BOARD/PANEL MUST MEET IPC-A-600 (LATEST REV.) CLASS 2 FOR FLATNESS.
 9. MFR. TO LEGIBLY ETCH OR STAMP/SCREEN WITH PERMANENT NON-CONDUCTIVE INK ON SECONDARY SIDE IN A CLEAR AREA UNLESS OTHERWISE INDICATED.
 A. U.L. CODE
 D. MFR. LOGO
 E. SUCCESSFUL ELECTRICAL BOARD TEST.
 10. NON-FUNCTIONAL PADS MAY BE REMOVED FROM INNER SIGNAL LAYERS AT MFR. DISCRETION.
 11. IF PAD SIZES PROVIDED ARE NOT LARGE ENOUGH TO MAINTAIN ANNULAR RING REQUIREMENT, MFR. MAY TEAR DROP PADS TO MAINTAIN ANNULAR RING AT PAD TO CIRCUIT INTERFACE ONLY AND MUST INSURE ELECTRICAL INTEGRITY.
 12. REPAIRS PER IPC-R-700 ARE ALLOWED.
 13. MODIFICATIONS TO THE ARTWORK, OTHER THAN THOSE DESCRIBED ON THE FABRICATION DRAWING, ARE NOT ALLOWED WITHOUT WRITTEN AUTHORIZATION.
 14. FINISH: SURFACES SHALL HAVE ENIG FINISH PLATED WITH 2-6 MICROINCHES OF IMMERSION GOLD OVER 100-200 MICROINCHES OF ELECTROLESS NICKEL.
 0.015 VIAS TO BE NON-CONDUCTIVE EPOXY FILLED, AND GROUND FLUSH PRIOR TO OVER PLATING.



PRIMARY SIDE

10 LAYER STACKUP

PRIMARY SILKSCREEN	PRIMARY SILKSCREEN
PRIMARY SOLDER MASK	PRIMARY SOLDER MASK
PRIMARY SIDE (LAYER 1)	PRIMARY SIDE (LAYER 1)
0.0055" GROUND PLANE (LAYER 2)	0.0055" GROUND PLANE (LAYER 2)
0.0035" POWER PLANE (LAYER 3)	0.0035" POWER PLANE (LAYER 3)
0.0063" SIGNAL LAYER (LAYER 4)	0.0063" SIGNAL LAYER (LAYER 4)
0.006" GROUND PLANE (LAYER 5)	0.006" GROUND PLANE (LAYER 5)
0.0049" GROUND PLANE (LAYER 6)	0.0049" GROUND PLANE (LAYER 6)
0.006" SIGNAL LAYER (LAYER 7)	0.006" SIGNAL LAYER (LAYER 7)
0.0063" POWER PLANE (LAYER 8)	0.0063" POWER PLANE (LAYER 8)
0.0035" GROUND PLANE (LAYER 9)	0.0035" GROUND PLANE (LAYER 9)
0.0055" SECONDARY SIDE (LAYER 10)	0.0055" SECONDARY SIDE (LAYER 10)
SECONDARY SOLDER MASK	SECONDARY SOLDER MASK
SECONDARY SILKSCREEN	SECONDARY SILKSCREEN

CHARACTERISTIC IMPEDANCE = 50 OHMS +/- 10%
 ARTWORK LINE WIDTH FOR IMPEDANCE CONTROLLED LINES = 0.008" FOR LAYER 1 AND 10.
 DIFFERENTIAL IMPEDANCE = 100 OHMS +/- 10%
 ARTWORK LINE WIDTH FOR IMPEDANCE CONTROLLED LINES = 0.005" FOR LAYER 1, 4, 7 AND 10.

HOLE TOLERANCE
 UNLESS SPECIFIED
 PLATED: +/- .003
 NON PLATED: +/- .001

FINISHED HOLES IN MILS		
ALL UNITS ARE IN MILS		
FIGURE	SIZE	QTY
A	10.0	83
B	15.0	84
C	16.0	526
D	25.0	120
E	40.0	10
F	60.0	25
G	63.0	15
H	75.0	4
I	40.0	NON-PLATED
J	155.0	NON-PLATED

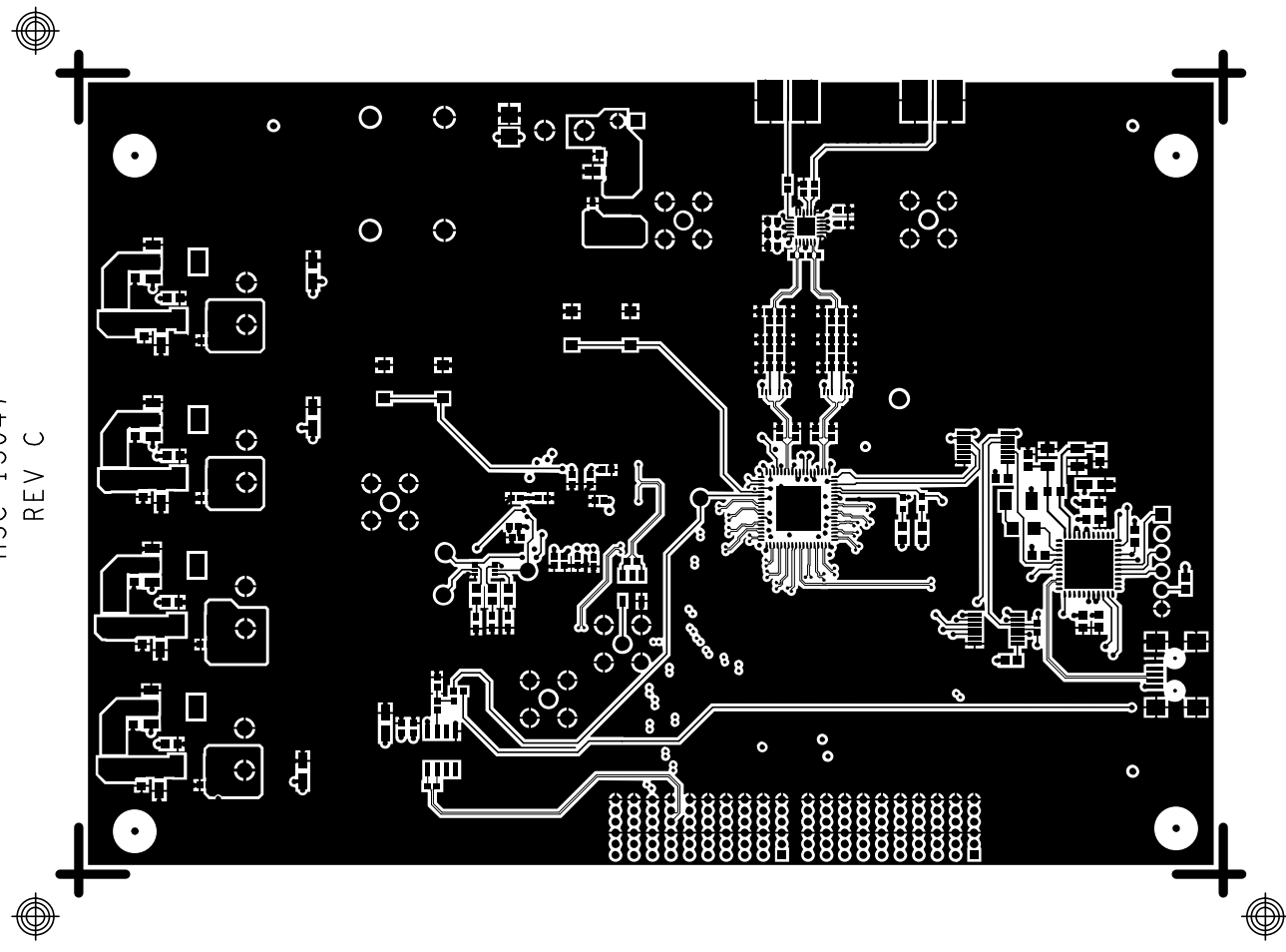
UNLESS OTHERWISE SPECIFIED DIMENSIONS ARE IN INCHES DECIMALS FRACTIONS ANGLES .XX .XX .00 .XX .1/32 .1	NCDRILL	APPROVAL	DATE
		DRAWN BY W. D. B.	05NOV13
MATERIAL	TITLE	REVISIONS	
		CHECKED	
FINISH	SIZE	APPROVED	
		WFO ENGINEER	
DO NOT SCALE DWG	SCALE	1/1	SHEET 1 OF 1

ANALOG DEVICES
 HSC DIVISION
 804 STREET
 WILMINGTON, MA 01887

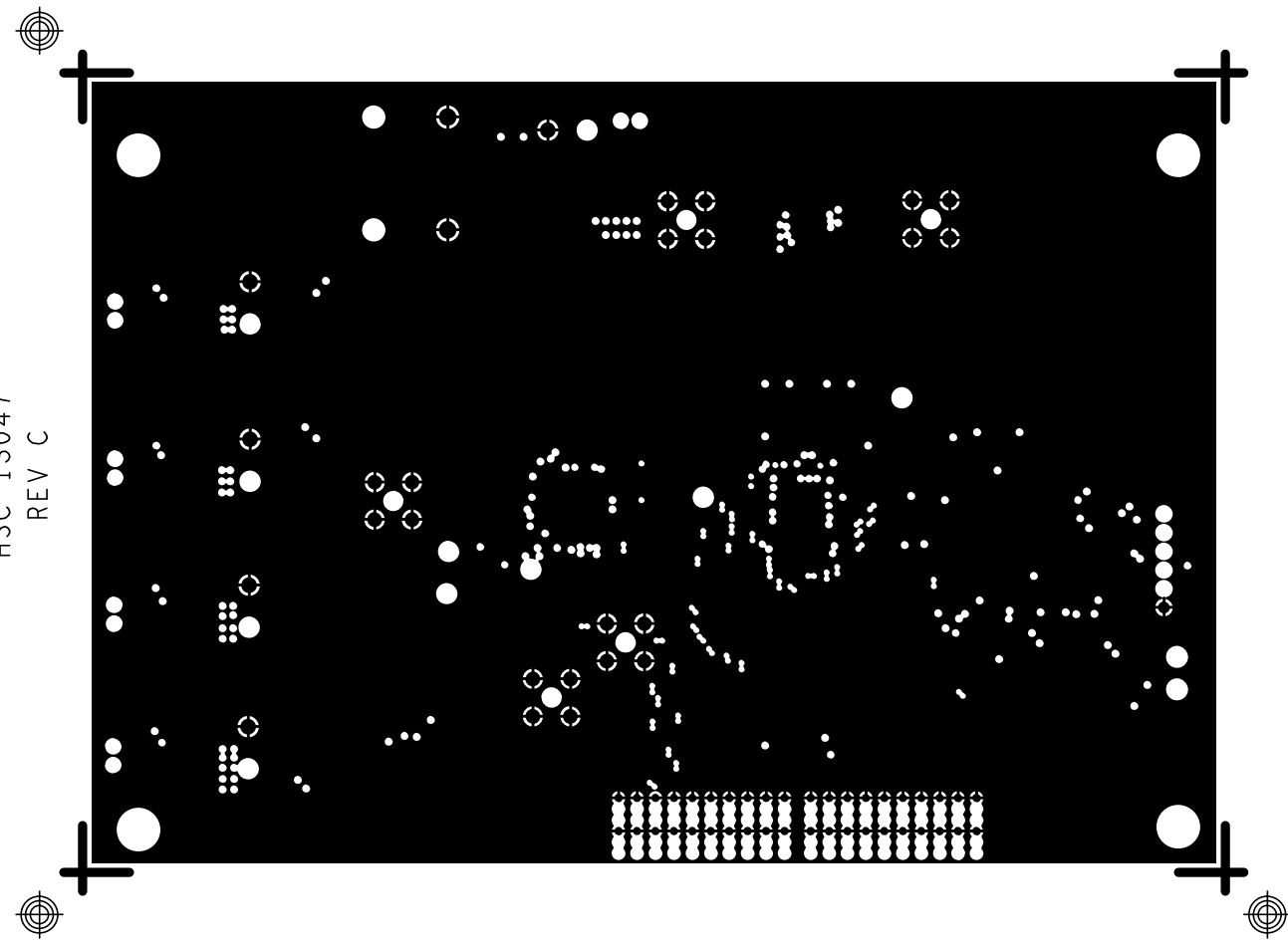
AD9142A-M5372 EBZ
 EVALUATION BOARD

FSCM NO: HSC 13047
 DRAWING NUMBER: HSC 13047
 REV: C

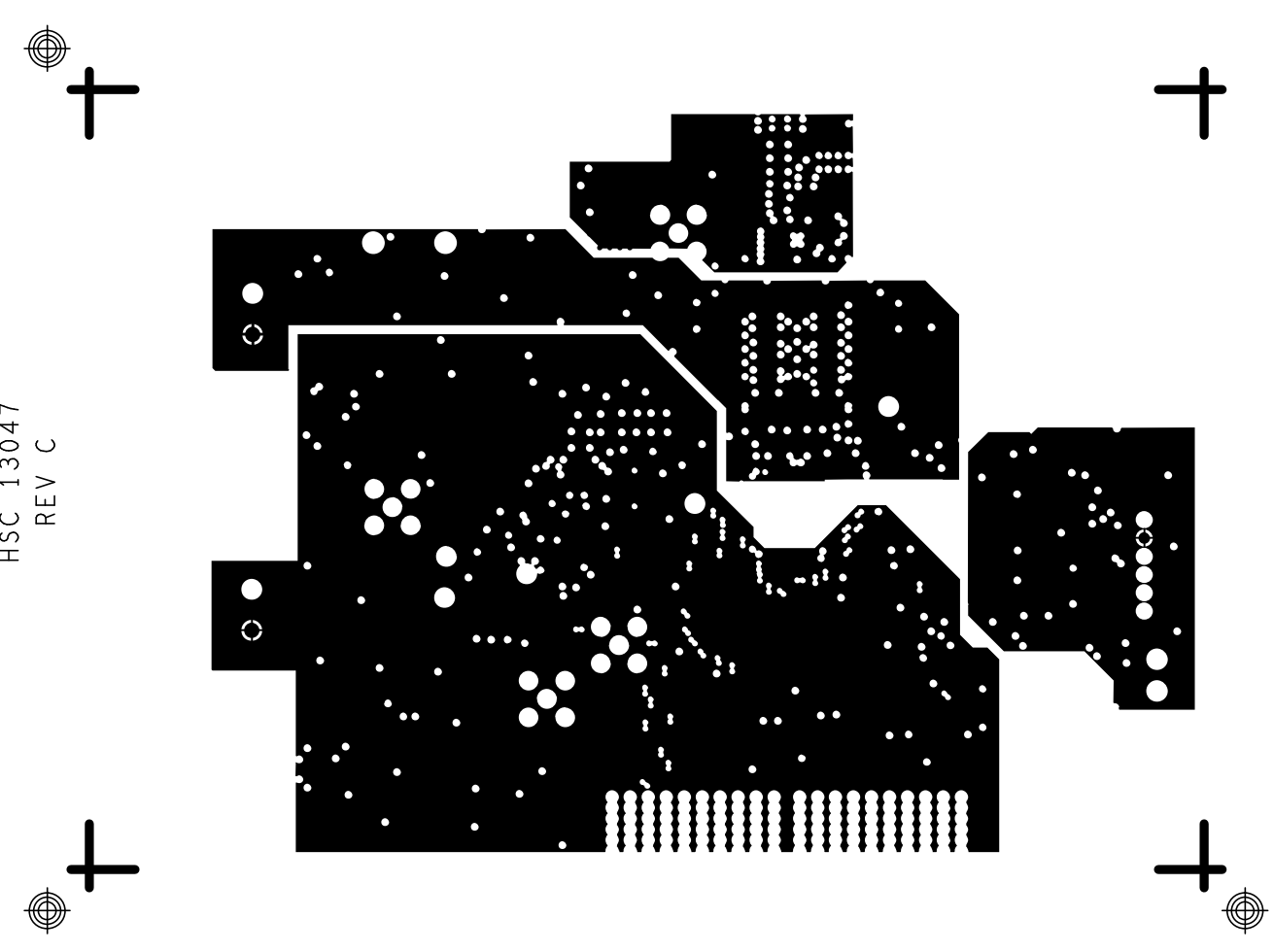
L1 PRIMARY
HSC 13047
REV C



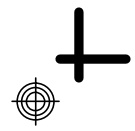
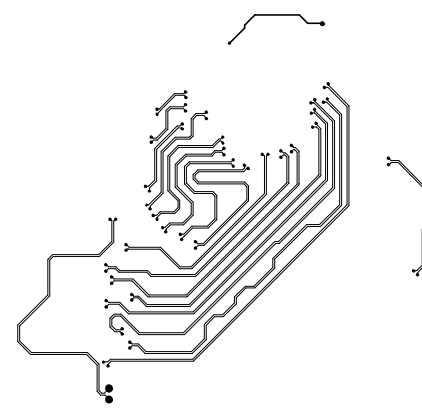
L2_GND
HSC_13047
REV C

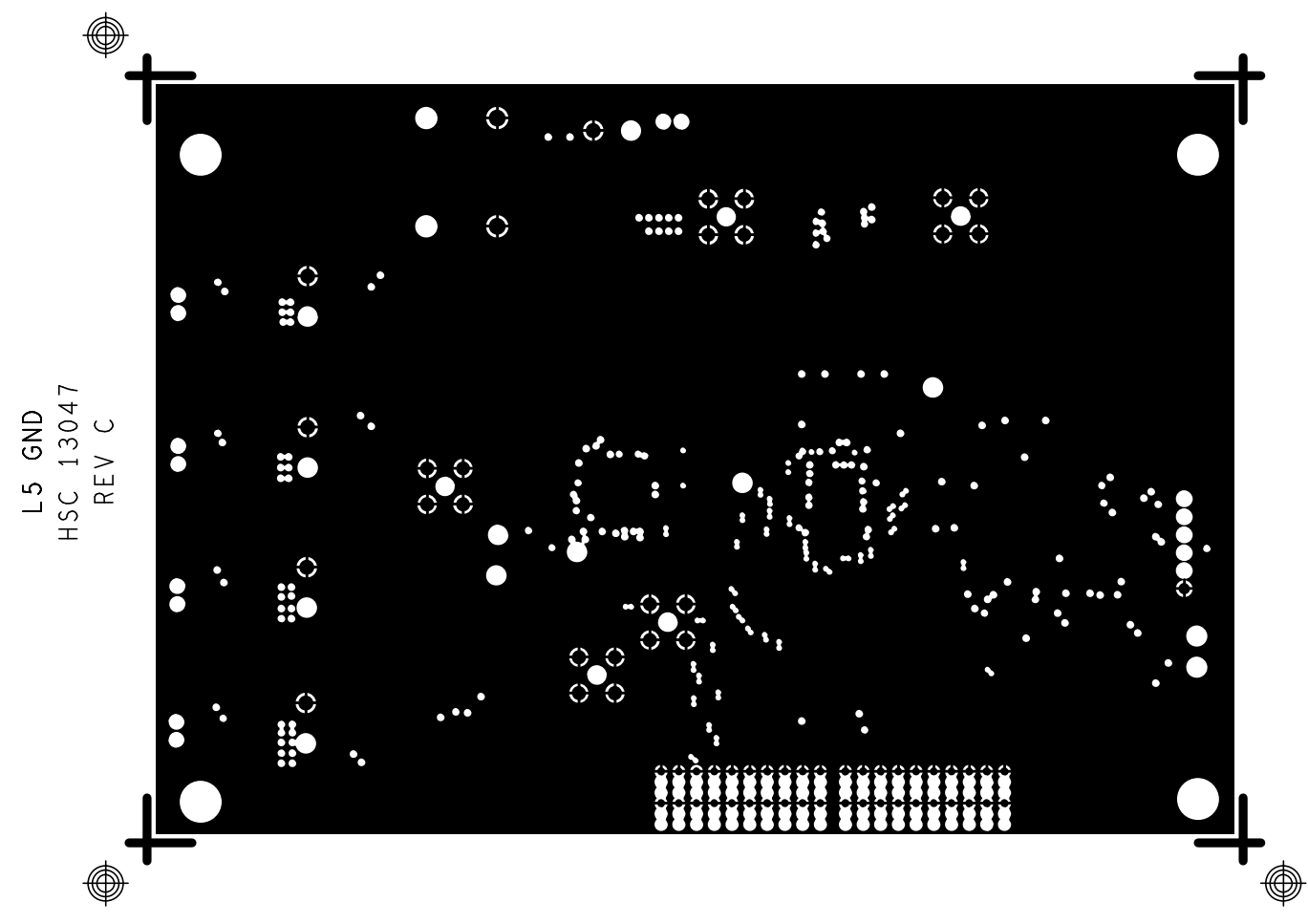


L3_PWR
HSC_13047
REV C

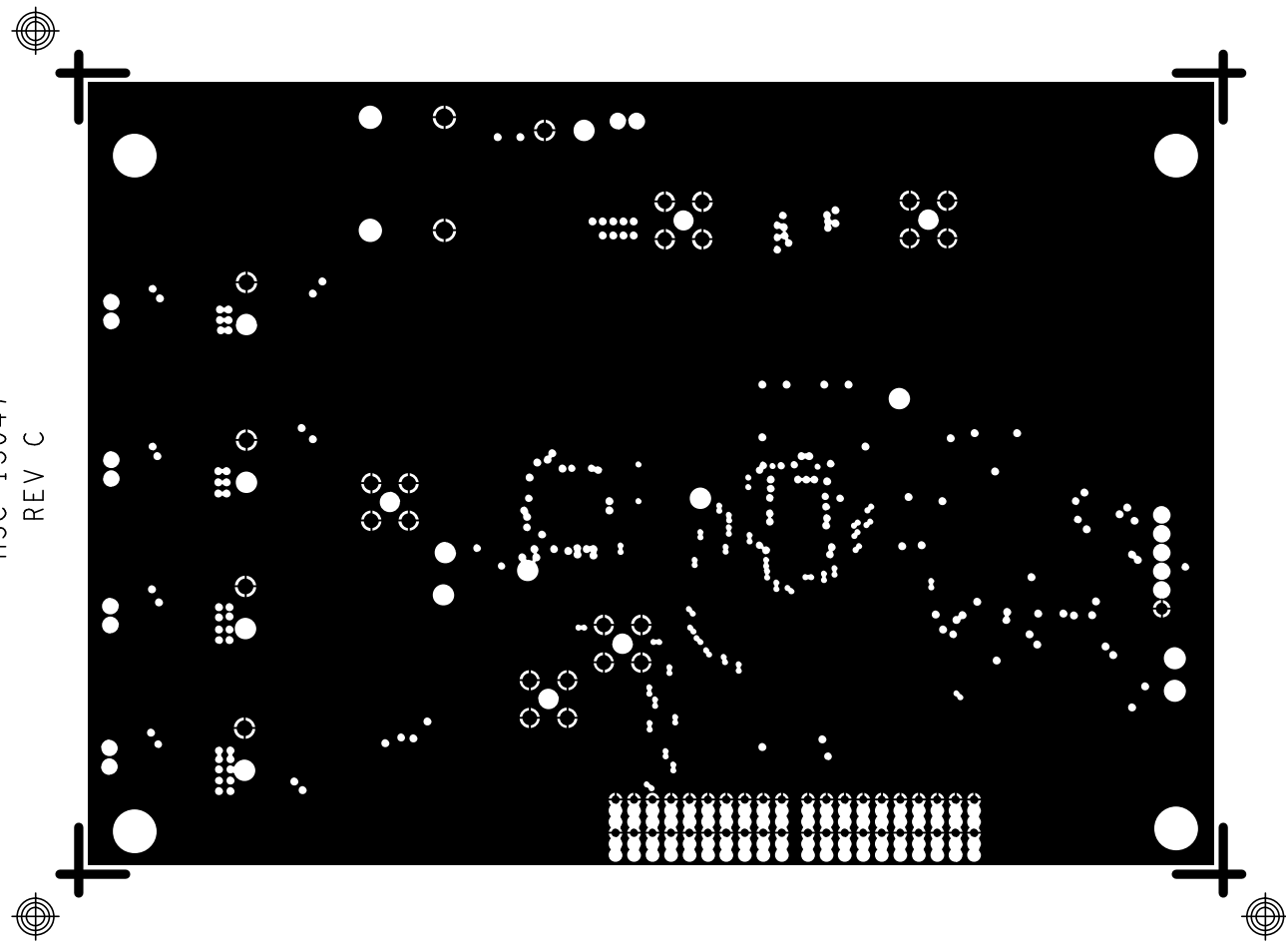


L4 SIGNAL
HSC 13047
REV C

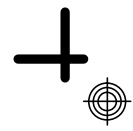
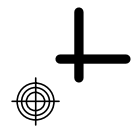
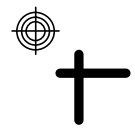
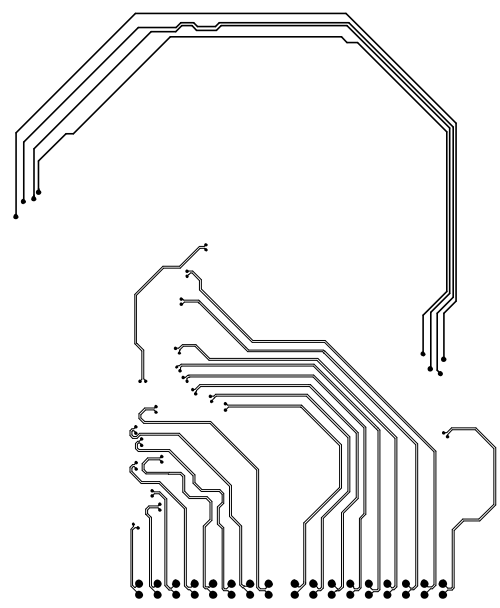




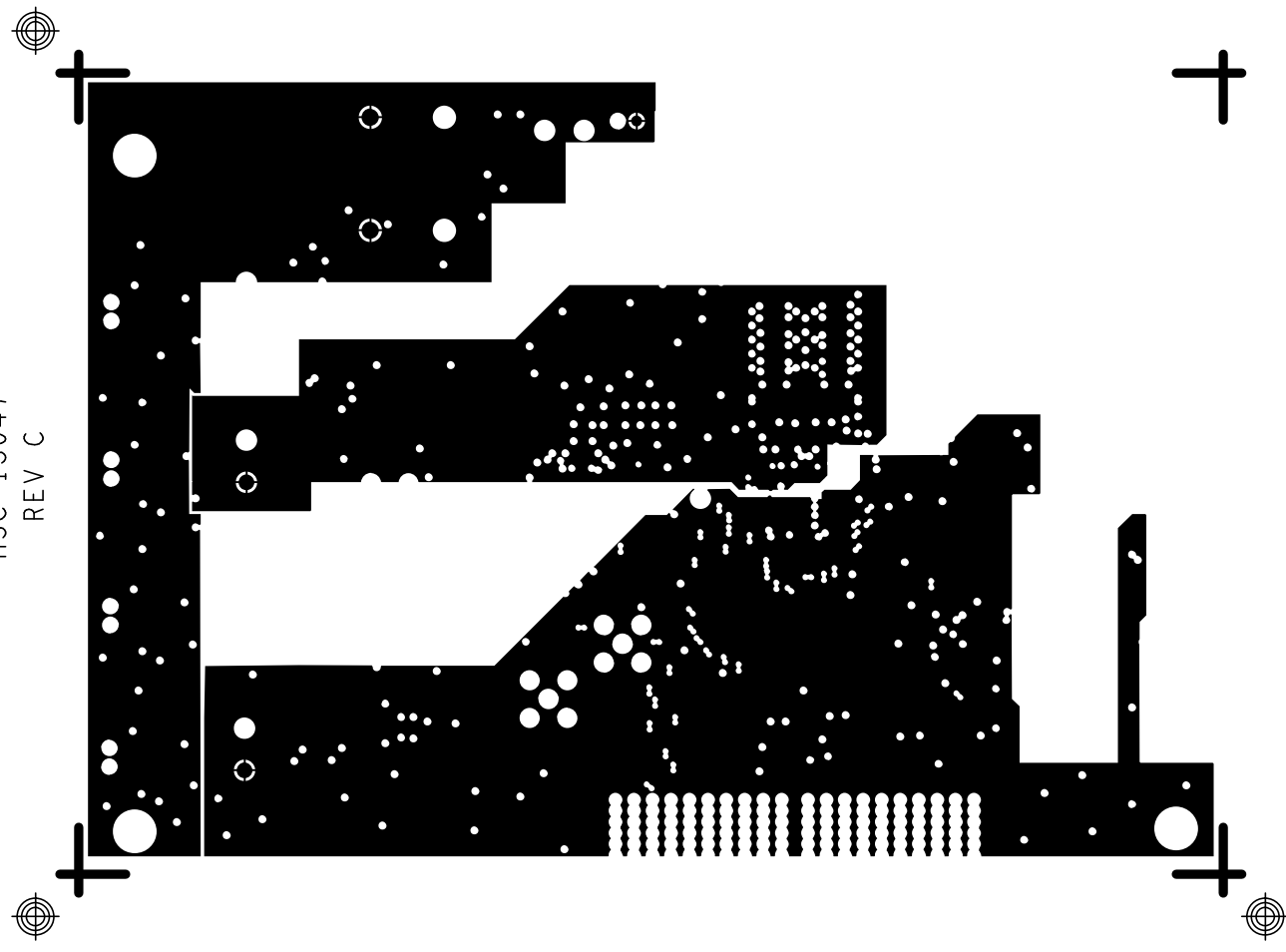
L6_GND
HSC_13047
REV_C

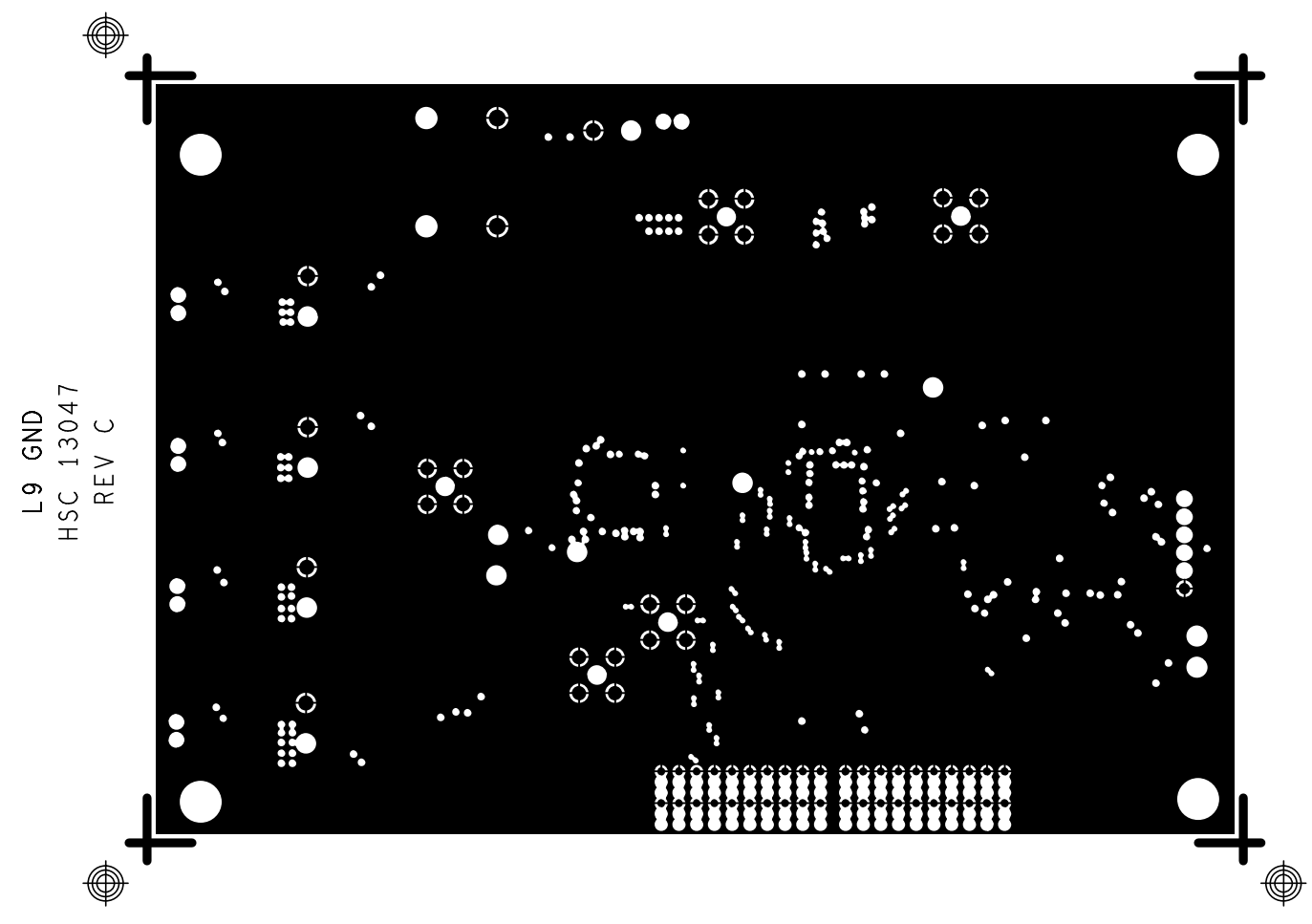


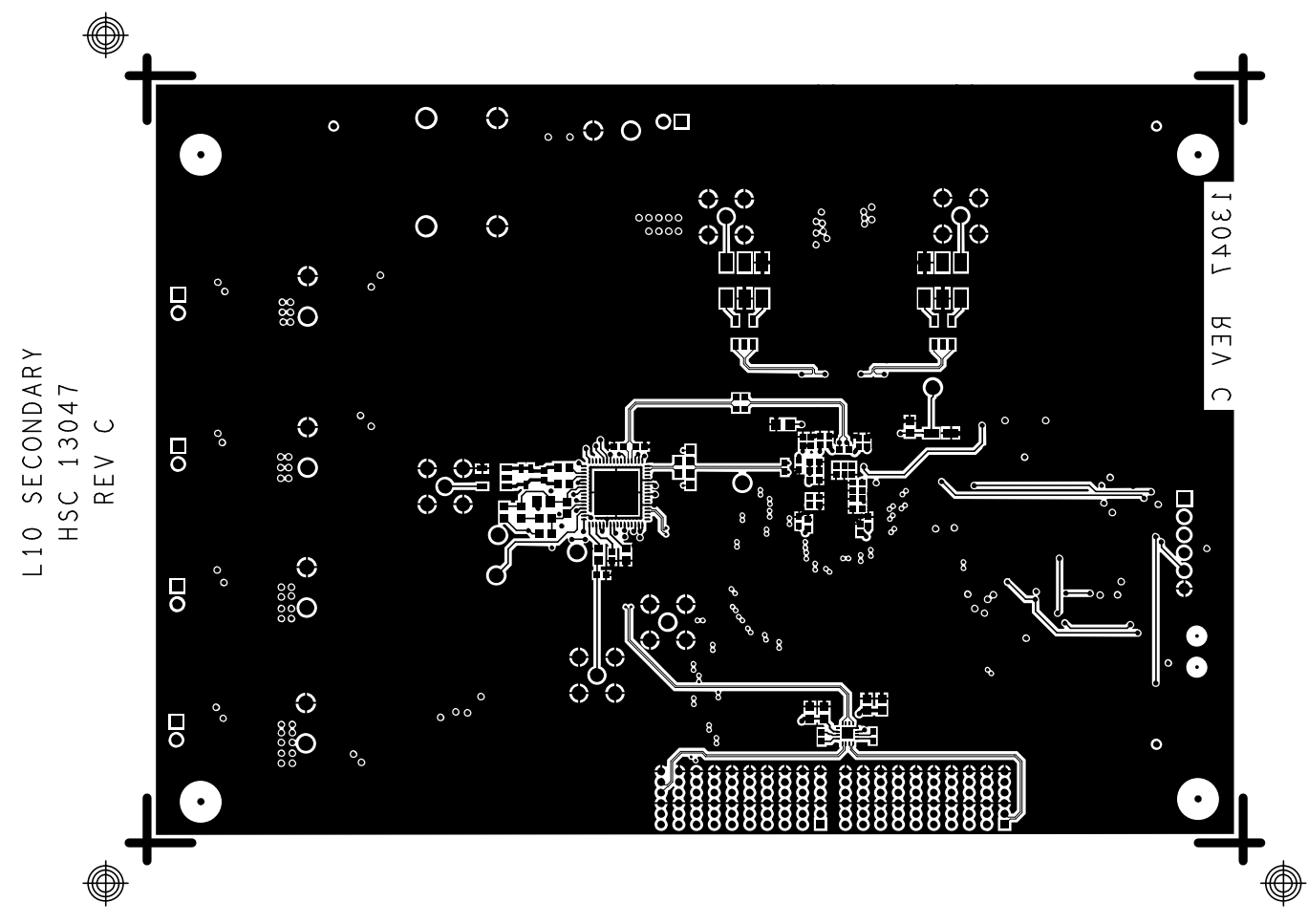
L7 SIGNAL
HSC 13047
REV C



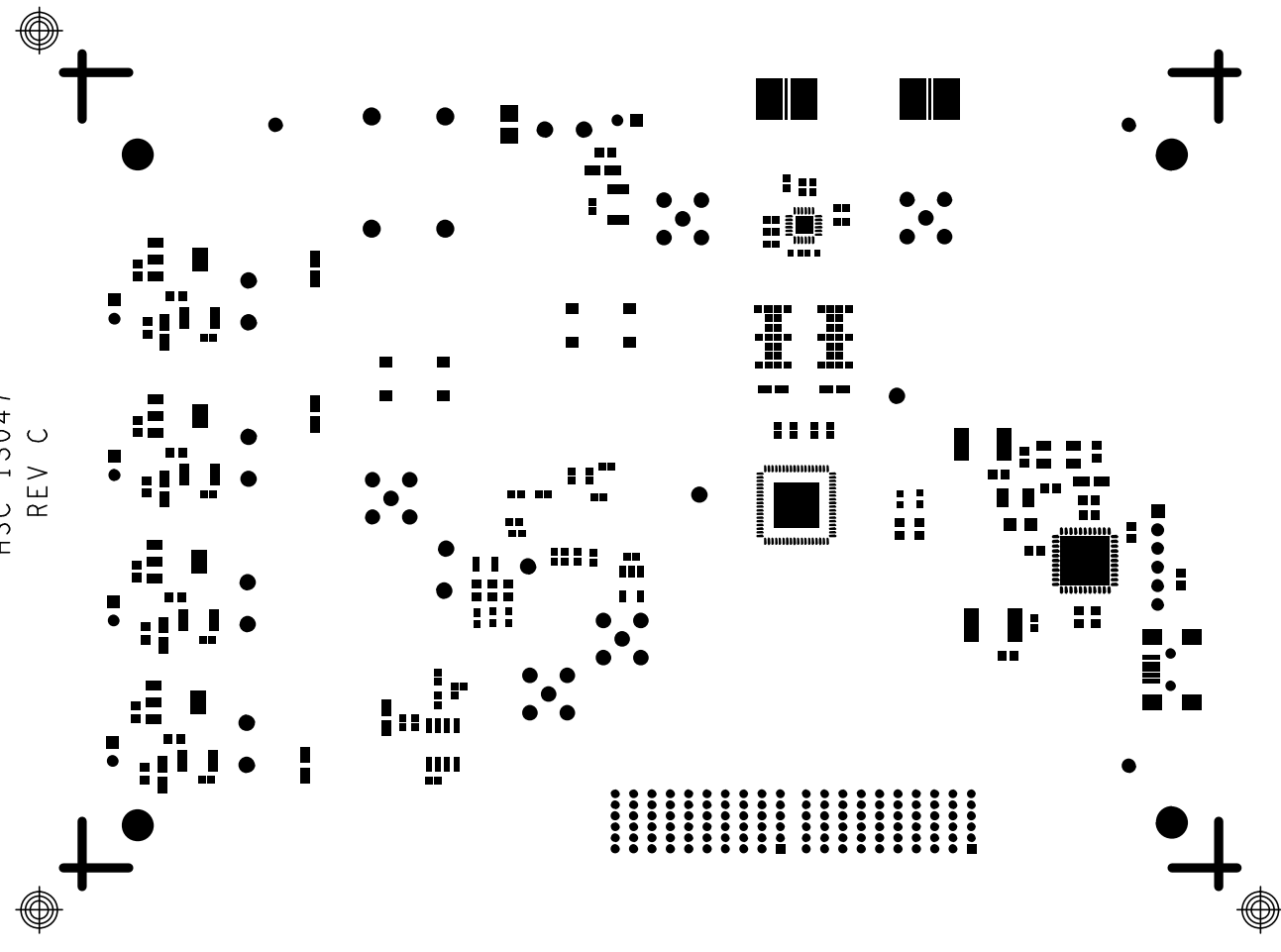
L8 PWR
HSC 13047
REV C



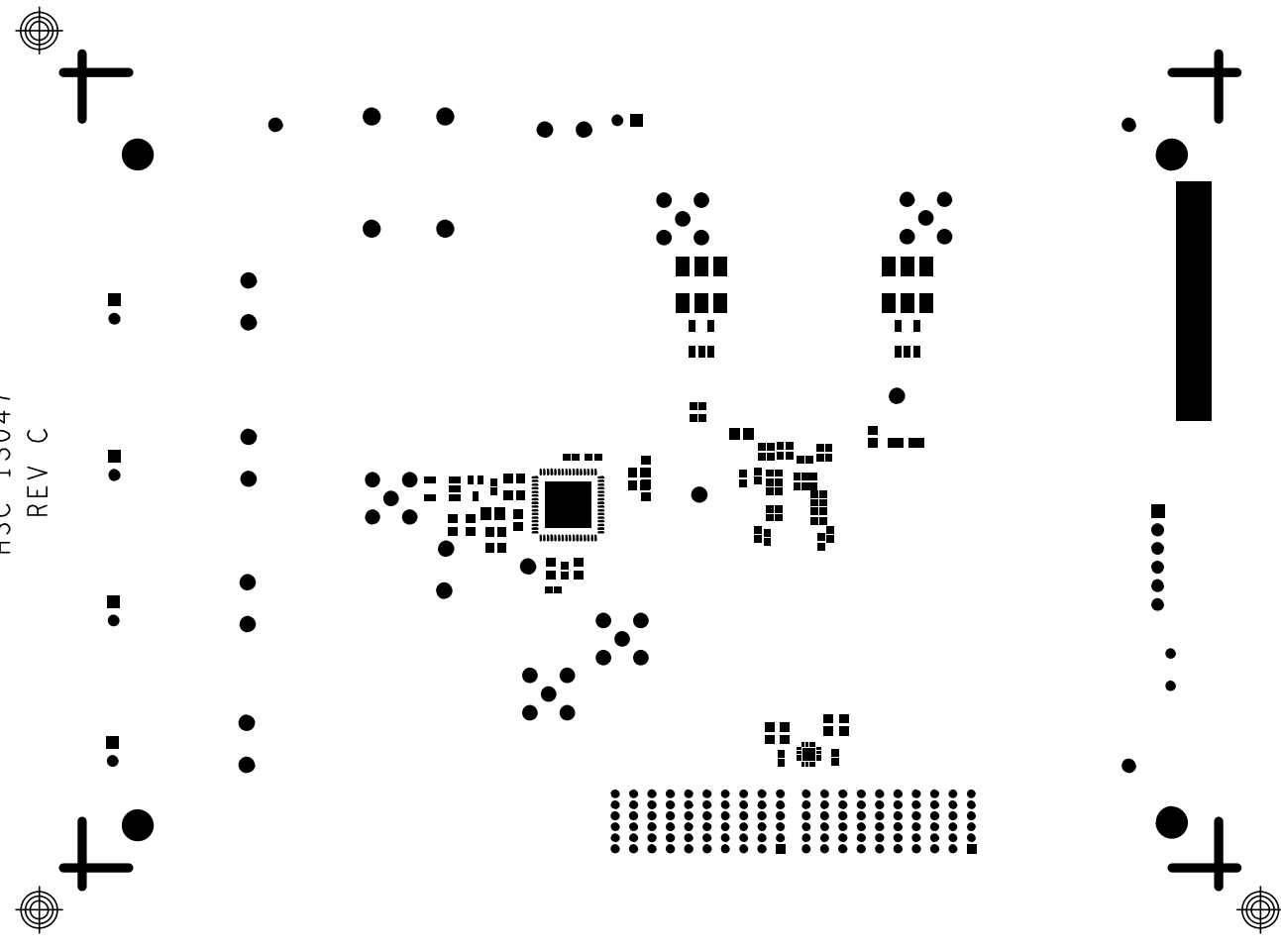




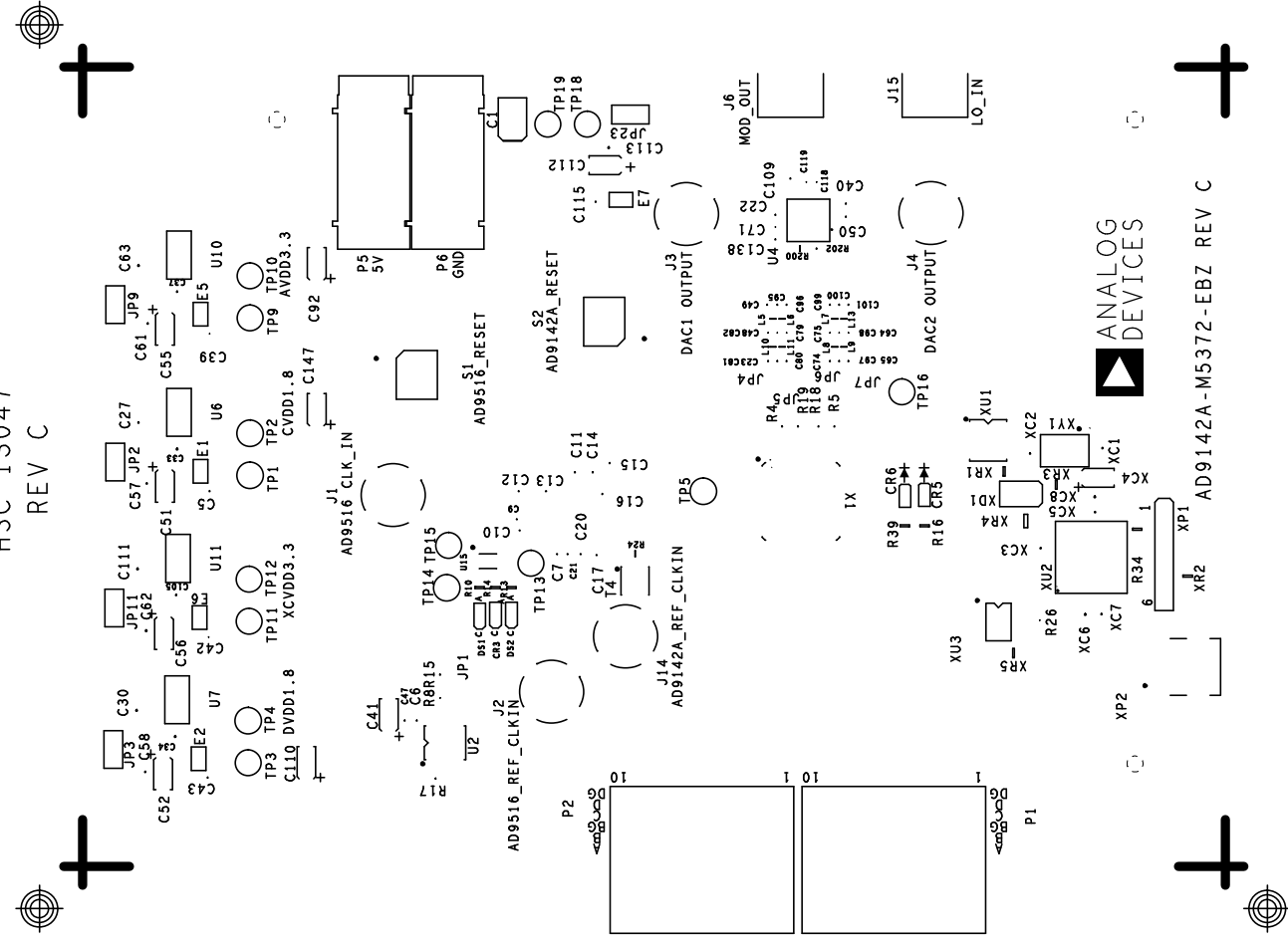
SOLDERMASK_PRIMARY
HSC_13047
REV_C



SOLDERMASK_SECONDARY
HSC_13047
REV_C



SILKSCREEN PRIMARY
HSC 13047
REV C

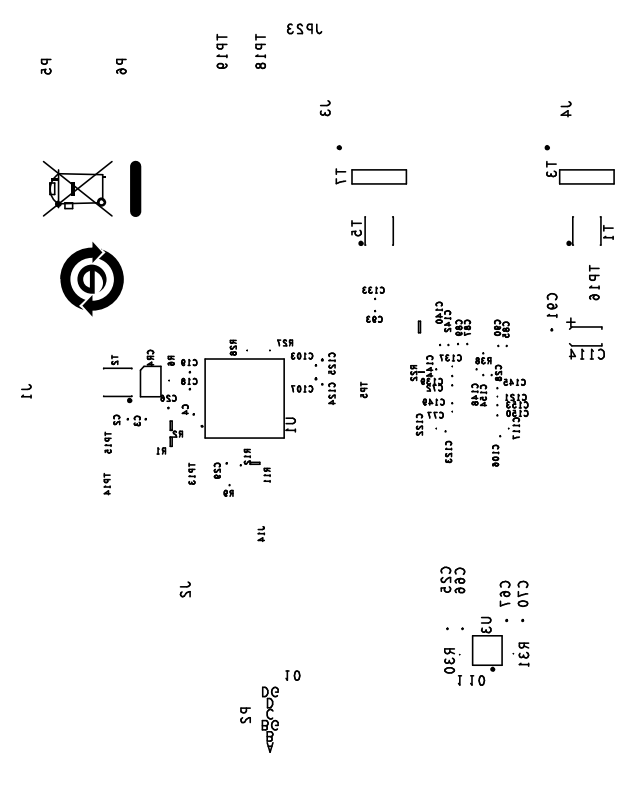


SILKSCREEN SECONDARY
HSC 13047
REV C

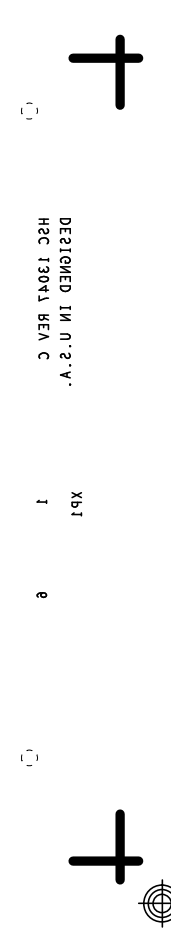


DATE 11/20/88 11:20 AM 11/20/88 11:20 AM

DATE 11/20/88 11:20 AM 11/20/88 11:20 AM



DATE 11/20/88 11:20 AM



DATE 11/20/88 11:20 AM

