

8

7

6

5

4

3

2

1

THIS DRAWING IS THE PROPERTY OF ANALOG DEVICES INC. IT IS NOT TO BE REPRODUCED OR COPIED, IN WHOLE OR IN PART, OR USED IN FURNISHING INFORMATION TO OTHERS, OR FOR ANY OTHER PURPOSE DETRIMENTAL TO THE INTERESTS OF ANALOG DEVICES. THE EQUIPMENT SHOWN HEREON MAY BE PROTECTED BY PATENTS OWNED OR CONTROLLED BY ANALOG DEVICES.

JUMPER TABLE		
JP#	ON	OFF
1		
2		
3		
4		
5		

REVISIONS			
REV	DESCRIPTION	DATE	APPROVED
A	10-13	10-13	L.W.
B	MINOR CHANGES	02-14	L.W.
B	UPDATED INTO HLM	2-15-18	P.A.

RELAY CONTROL CHART

CONTROL	CODE	DEVICE	FUNCTION	CONNECTOR

* SEE ASSEMBLY INSTRUCTIONS

15 FEB 18

P.O SPEC.	BK/BD SPEC.	SOCKET OEM	OEM PART#	HANDLER

TEMPLATE ENGINEER -	DATE 3/22/11	SCHEMATIC		
HARDWARE SERVICES -				
HARDWARE SYSTEMS -		HW TYPE : Customer Evaluation		
TEST ENGINEER -		Product(s) : AD9144-FMC_EBZ		
COMPONENT ENGINEER -		: AD9136-FMC-EBZ AD9135-FMC-EBZ		
TEST PROCESS -		PACKAGE : :		
HARDWARE RELEASE -		<User Define> <User Define> <User Define>		
DESIGNER -		MASTER PROJECT TEMPLATE TBD	TESTER TEMPLATE no_template	DRAWING NO. 02_049092
PTD ENGINEER <PTD_ENGINEER>		UNLESS OTHERWISE SPECIFIED DIMENSIONS ARE IN INCHES		
CHECKER -		TOLERANCES		REV. B
		DECIMALS X.XX +0.010 X.XXX +0.005	FRACTIONS +1/32	ANGLES +2
		SIZE D	SCALE 1:1	CODE ID NO. CodeID
		SHEET 1		OF 8

8

7

6

5

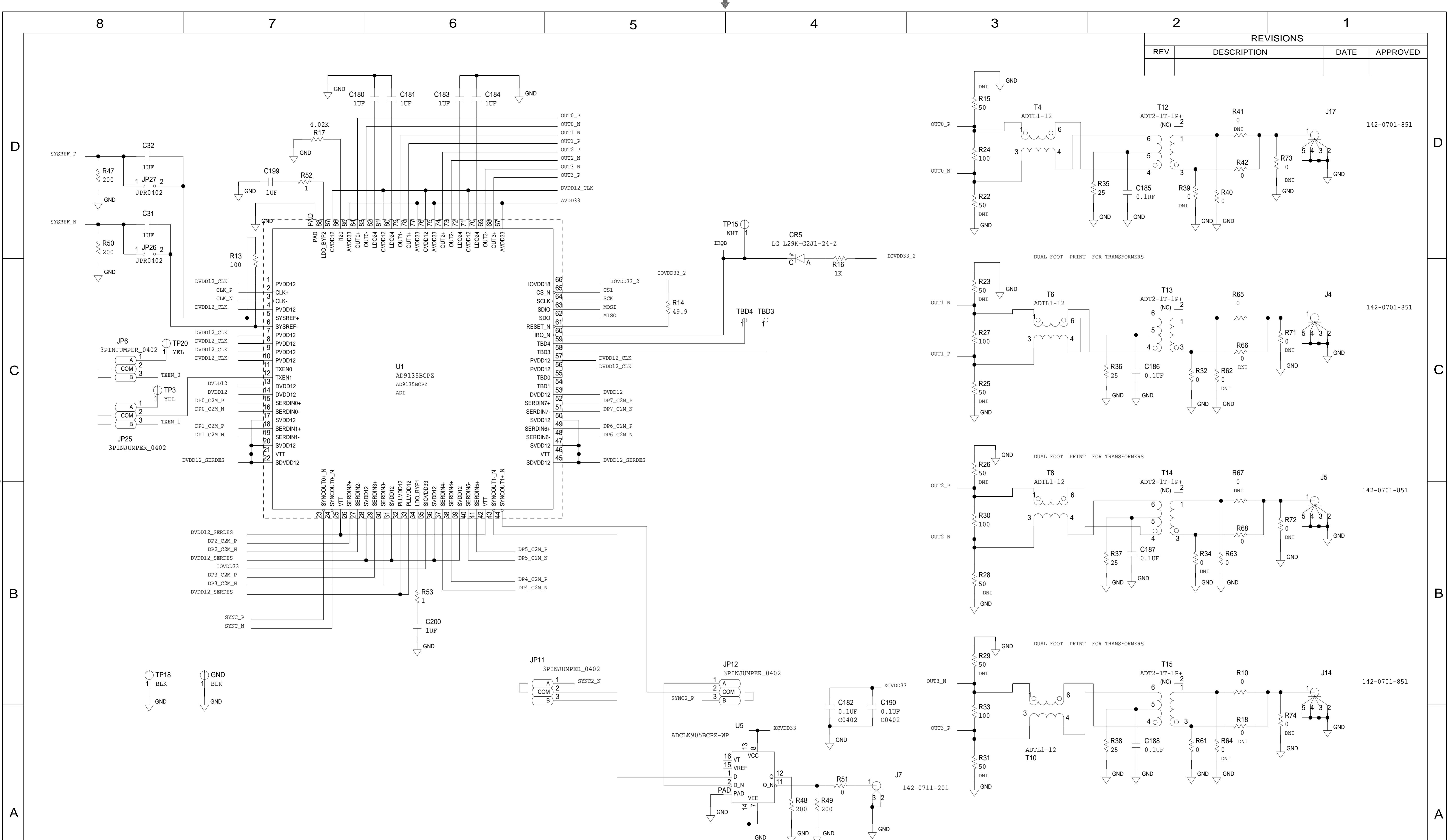
4

3

2

1

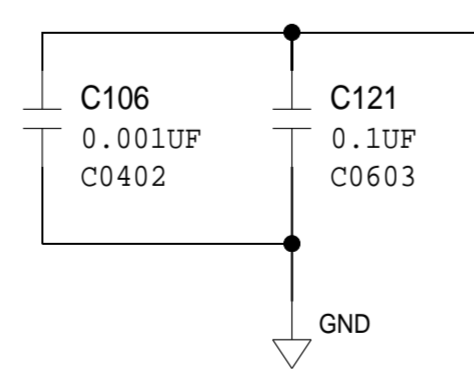
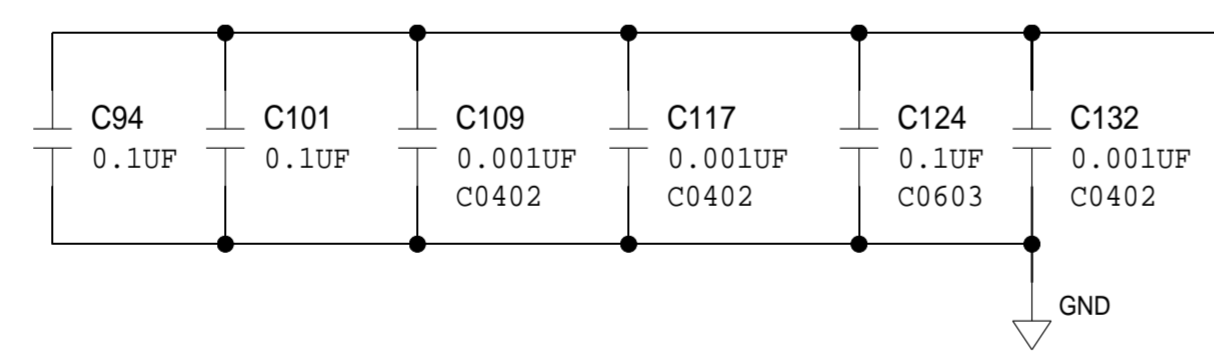
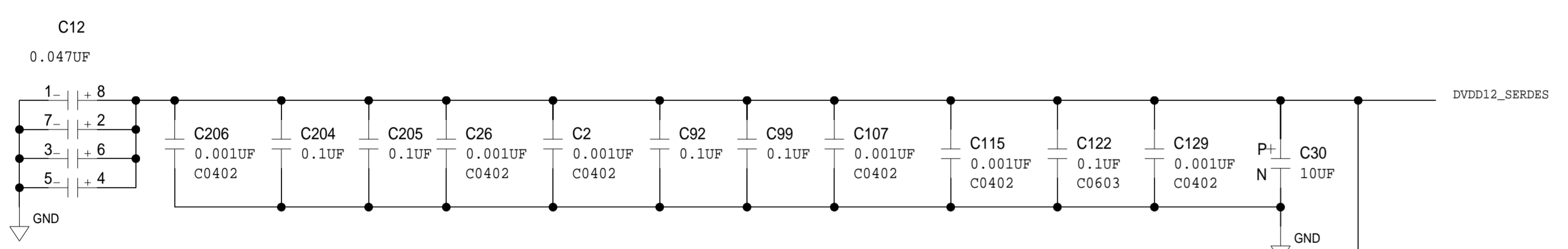
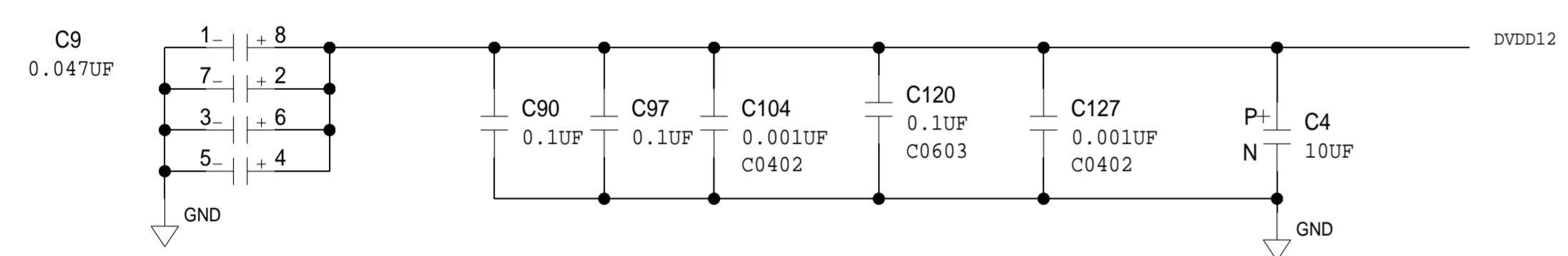
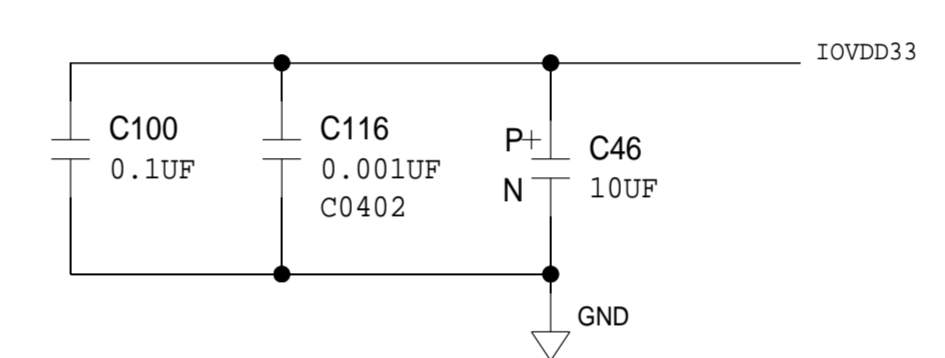
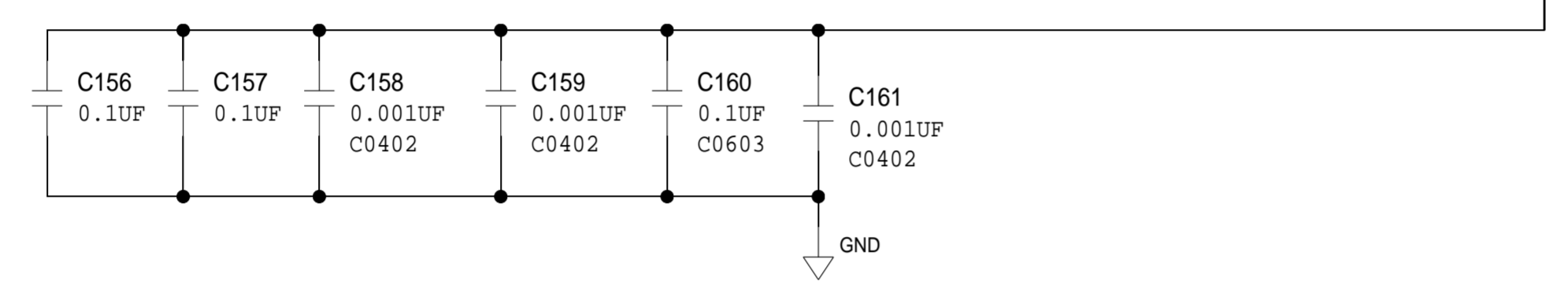
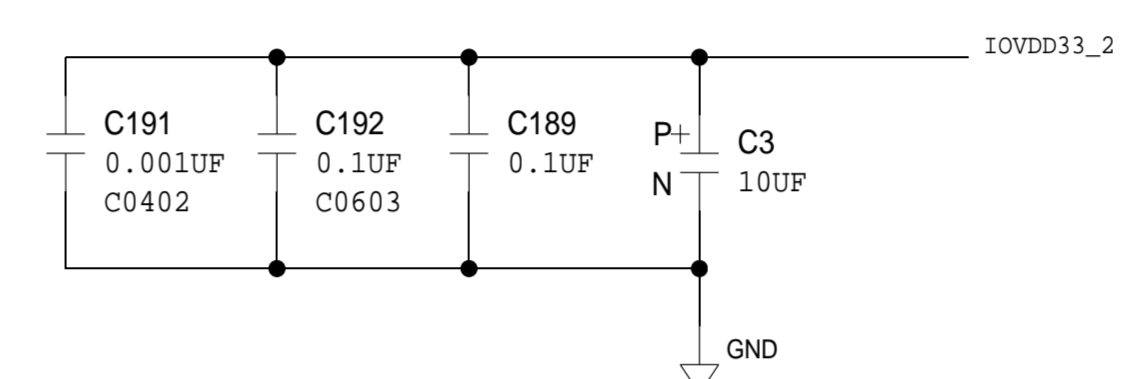
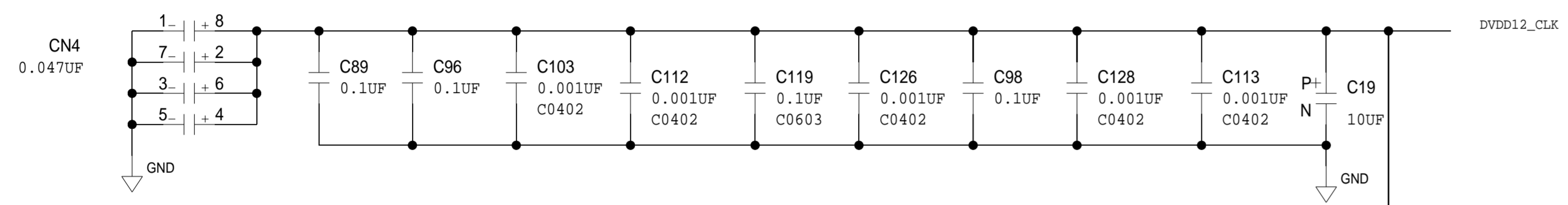
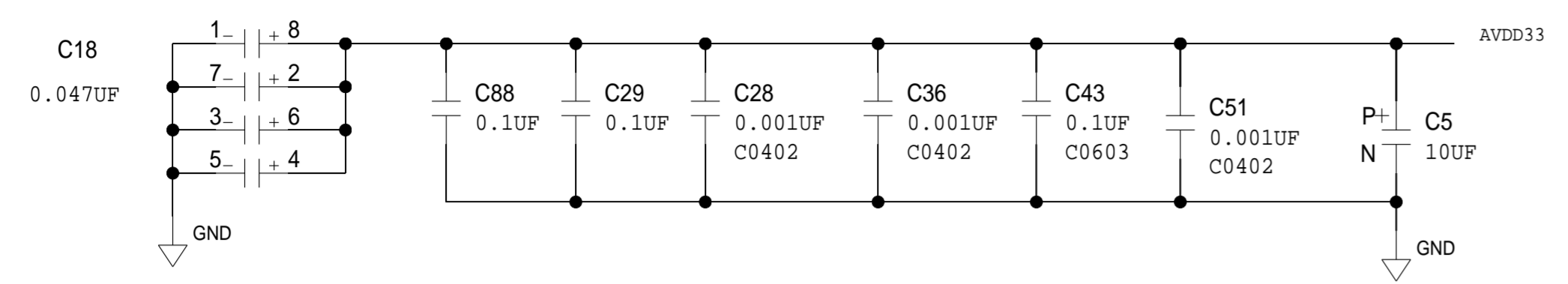
REVISIONS			
REV	DESCRIPTION	DATE	APPROVED



	SCHEMATIC		
	HW TYPE : Customer Evaluation Product(s) : AD9144-FMC-EBZ : AD9136-FMC-EBZ AD9135-FMC-EBZ		
DESIGN VIEW <DESIGN_VIEW>	DRAWING NO. 02_049092	REV B	
PTD ENGINEER <PTD_ENGINEER>	SIZE D	SCALE 1:1	SHEET 2 OF 8

THIS DRAWING IS THE PROPERTY OF ANALOG DEVICES INC. IT IS NOT TO BE REPRODUCED OR COPIED, IN WHOLE OR IN PART, OR USED IN FURNISHING INFORMATION TO OTHERS, OR FOR ANY OTHER PURPOSE DETRIMENTAL TO THE INTERESTS OF ANALOG DEVICES. THE EQUIPMENT SHOWN HEREON MAY BE PROTECTED BY PATENTS OWNED OR CONTROLLED BY ANALOG DEVICES.

REVISIONS			
REV	DESCRIPTION	DATE	APPROVED



	SCHEMATIC		
	HW TYPE : Customer Evaluation Product(s) : AD9144-FMC-EBZ : AD9136-FMC-EBZ AD9135-FMC-EBZ		
	DESIGN VIEW <DESIGN_VIEW>	DRAWING NO. 02_049092	REV B
	PTD ENGINEER <PTD_ENGINEER>	SIZE D	SCALE 1:1
		SHEET 3 OF 8	

REVISIONS			
REV	DESCRIPTION	DATE	APPROVED

FMC

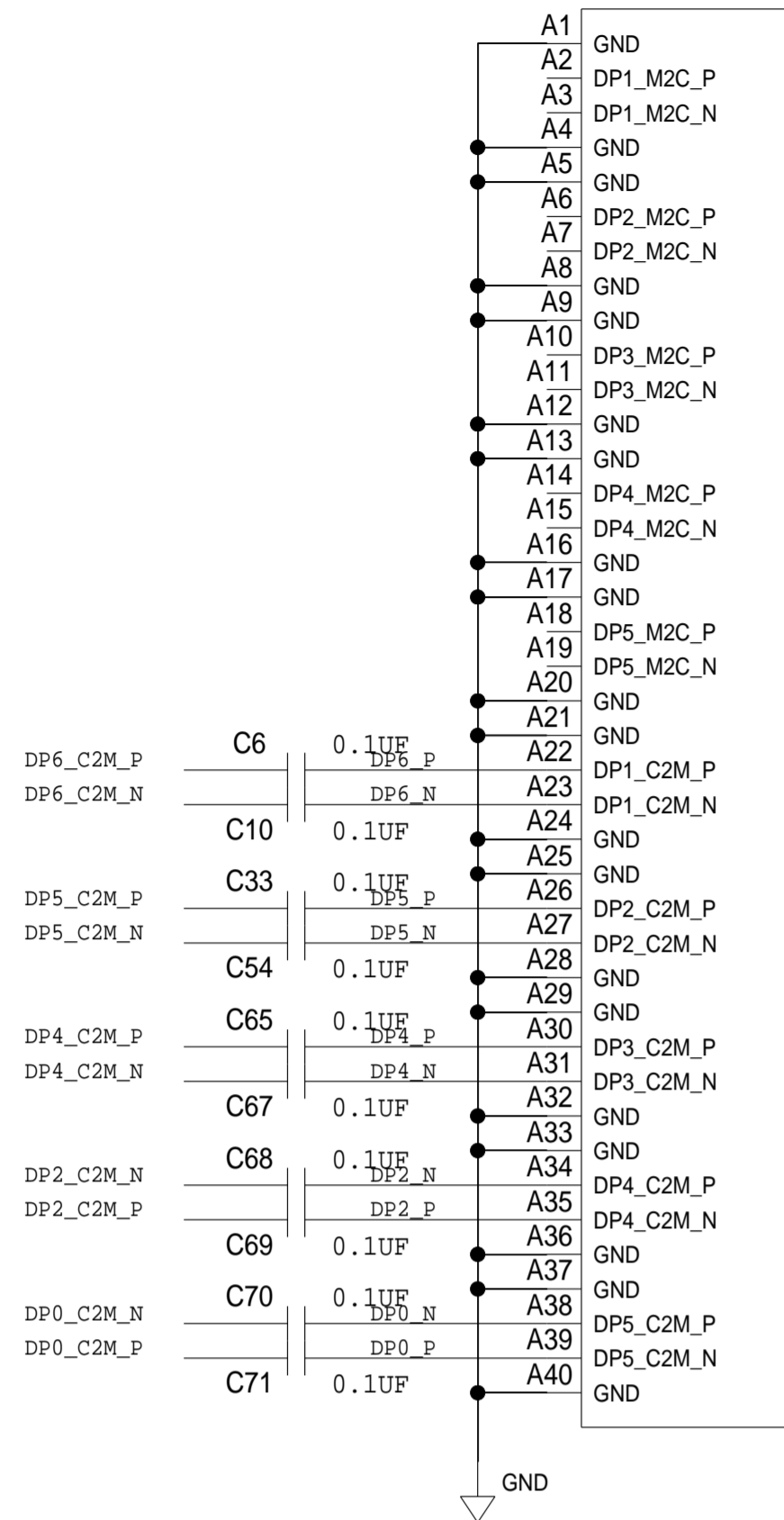
P1
ASP-134488-01

P1
ASP-134488-01

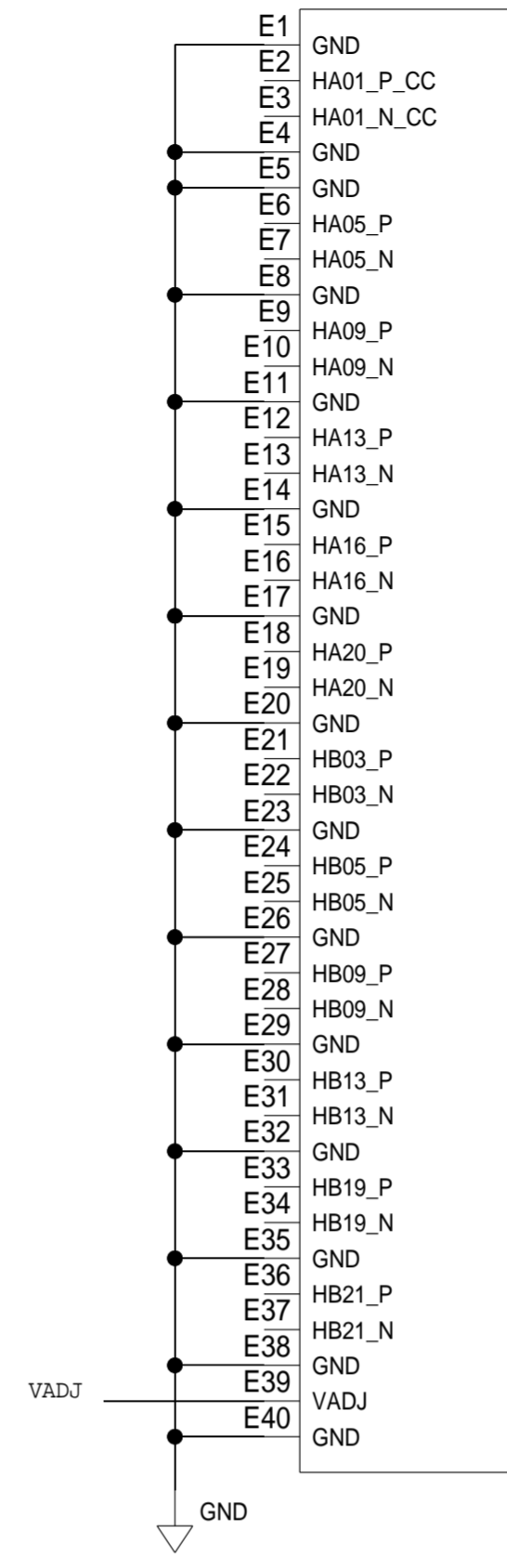
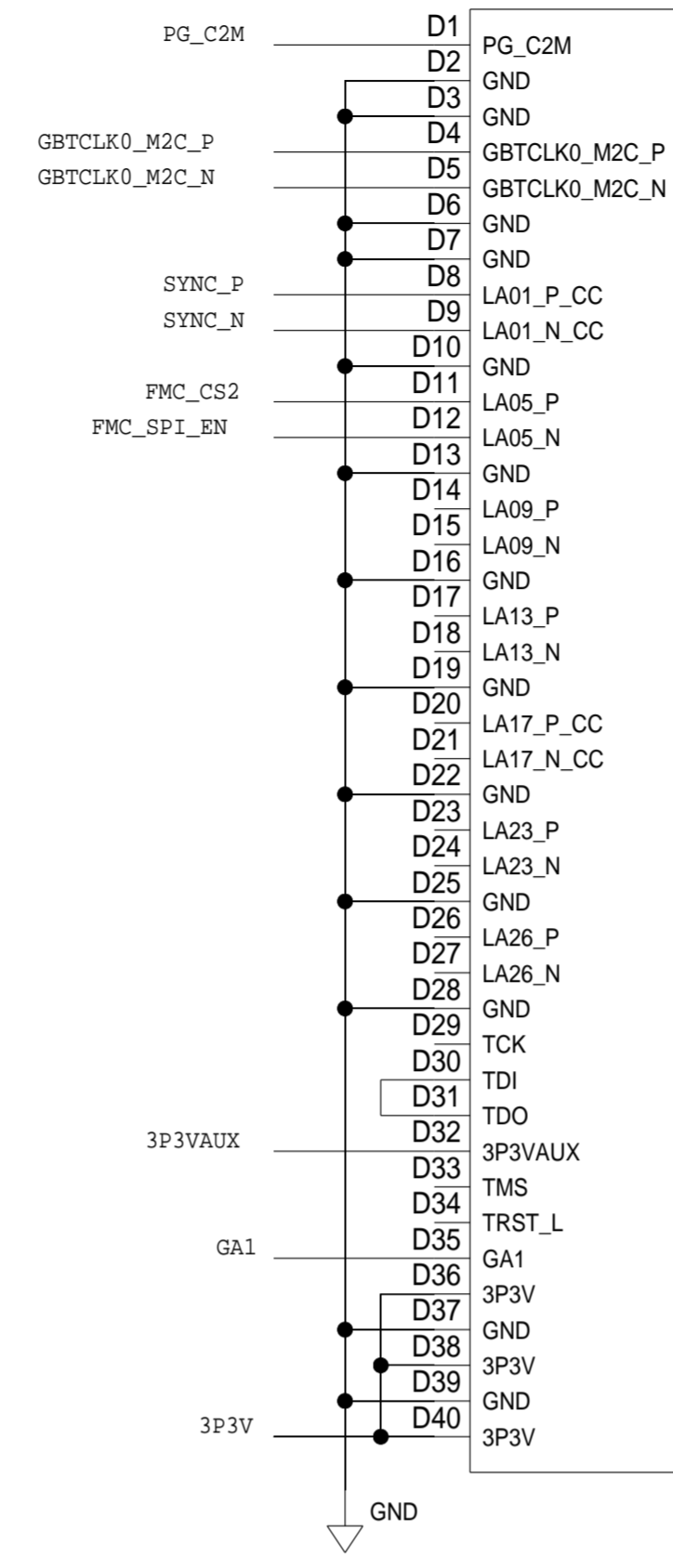
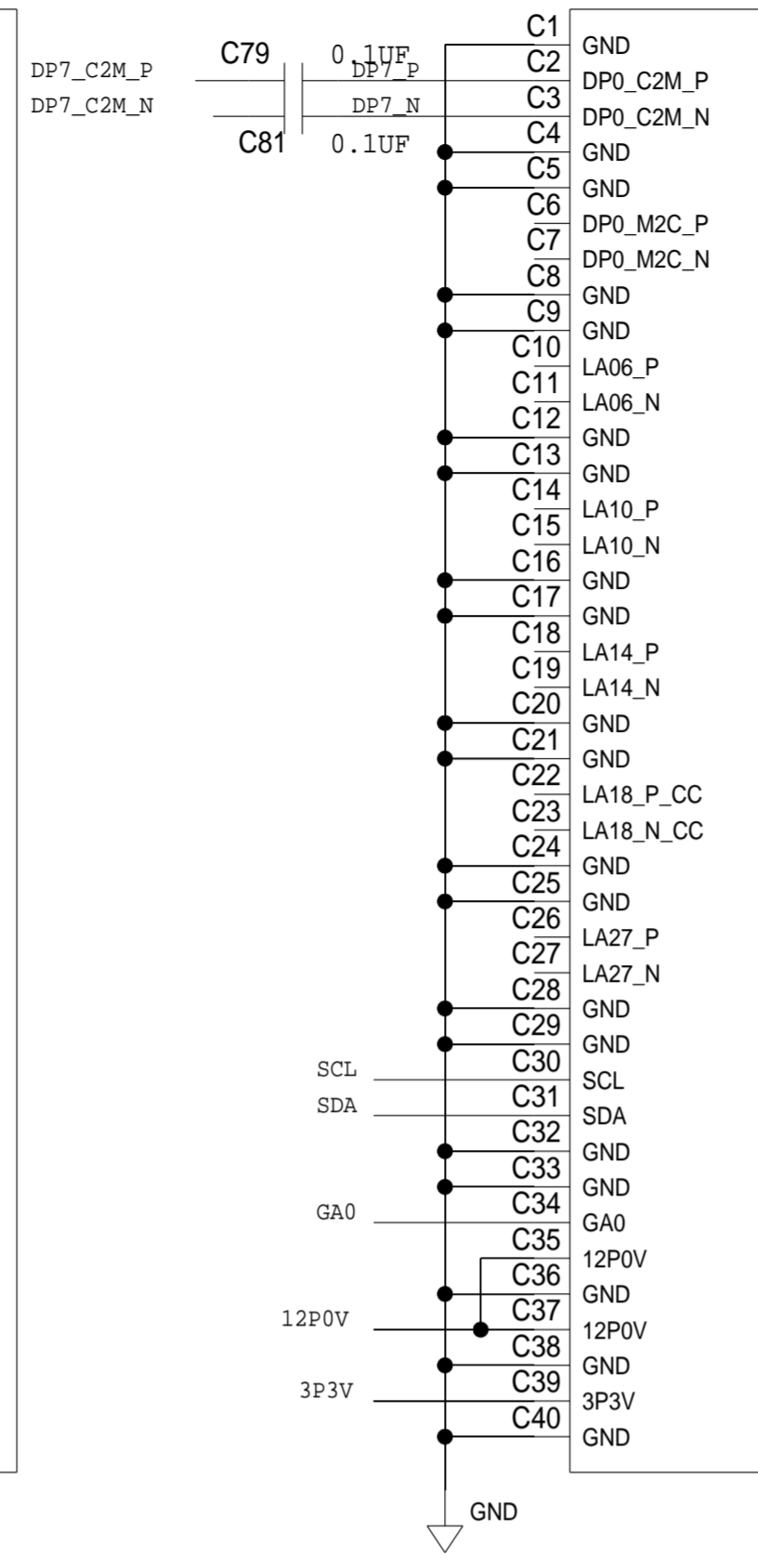
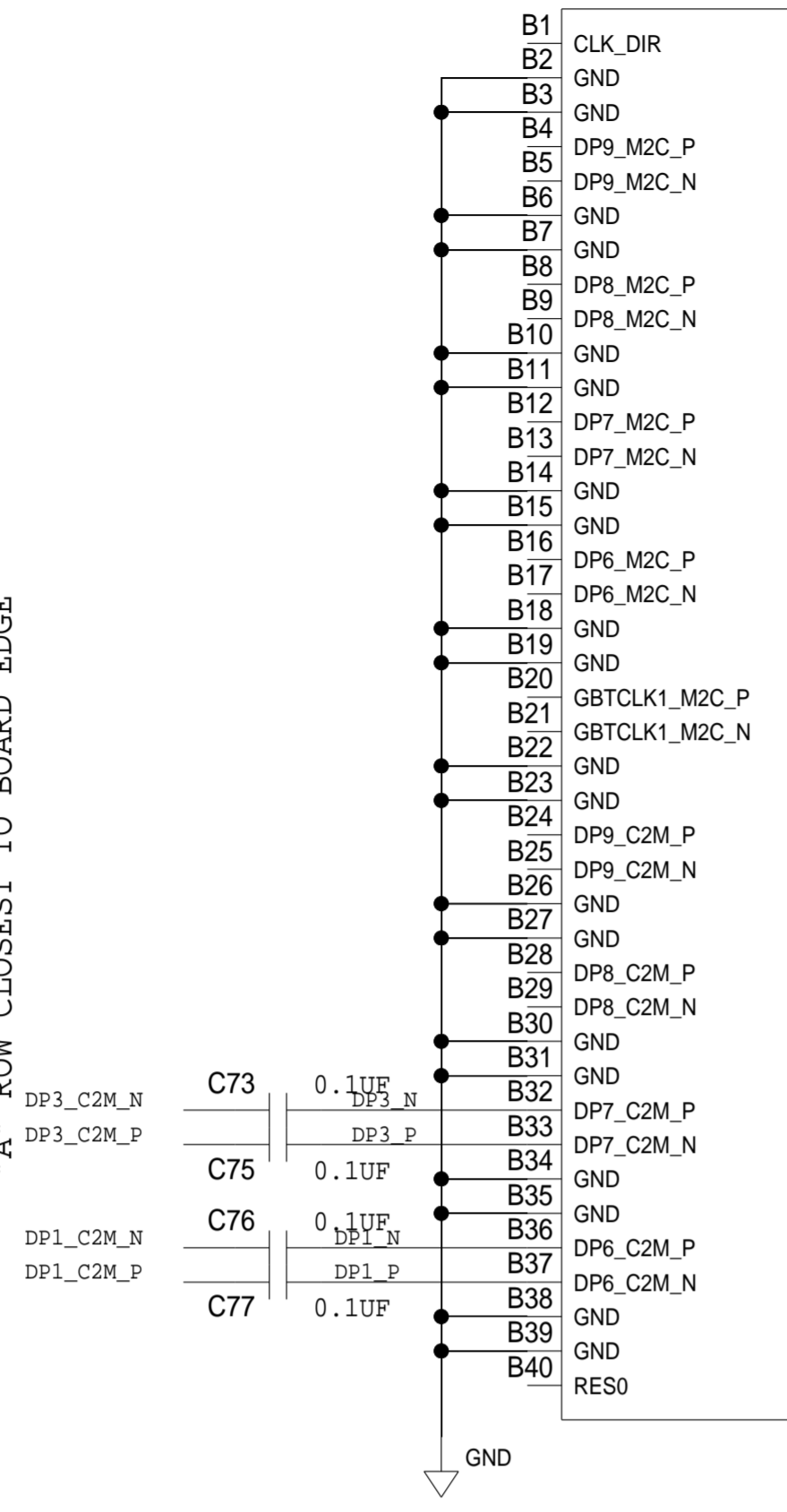
P1
ASP-134488-01

P1
ASP-134488-01

P1
ASP-134488-01



"A" ROW CLOSEST TO BOARD EDGE



ON 3P3V, 12P0V, AND VADJ, HAVE PIN-HEADER JUMPER BETWEEN FMC PINS AND REST OF BOARD, TO ALLOW FOR CURRENT MEASUREMENT PER RAIL.

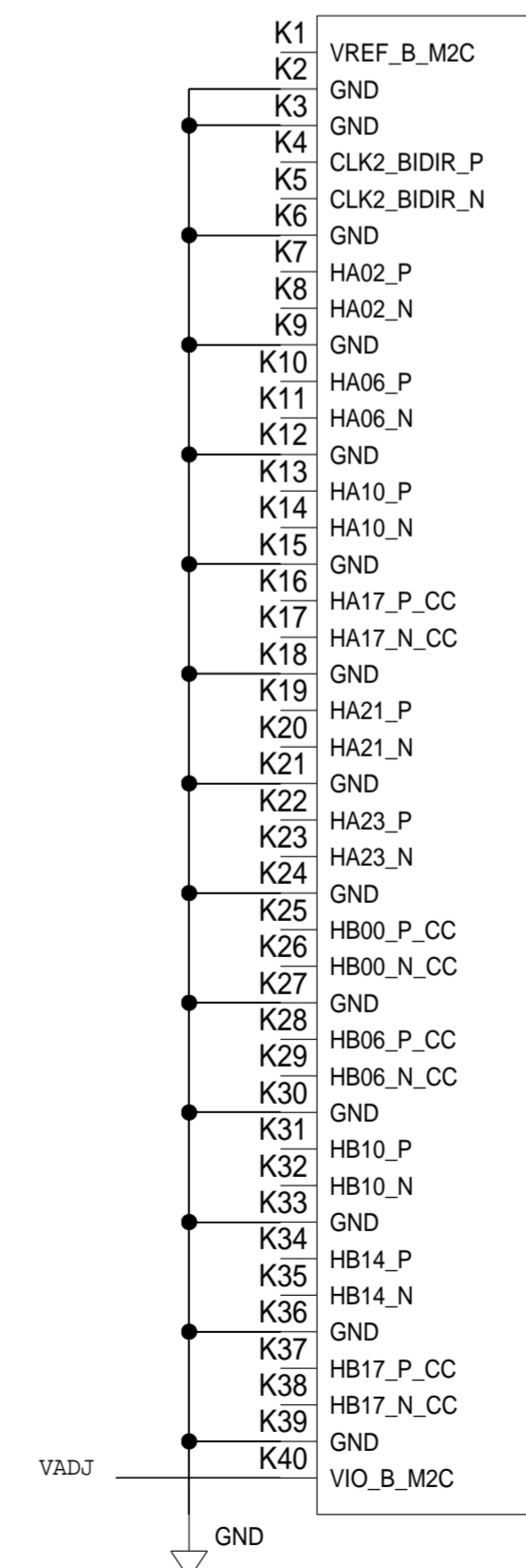
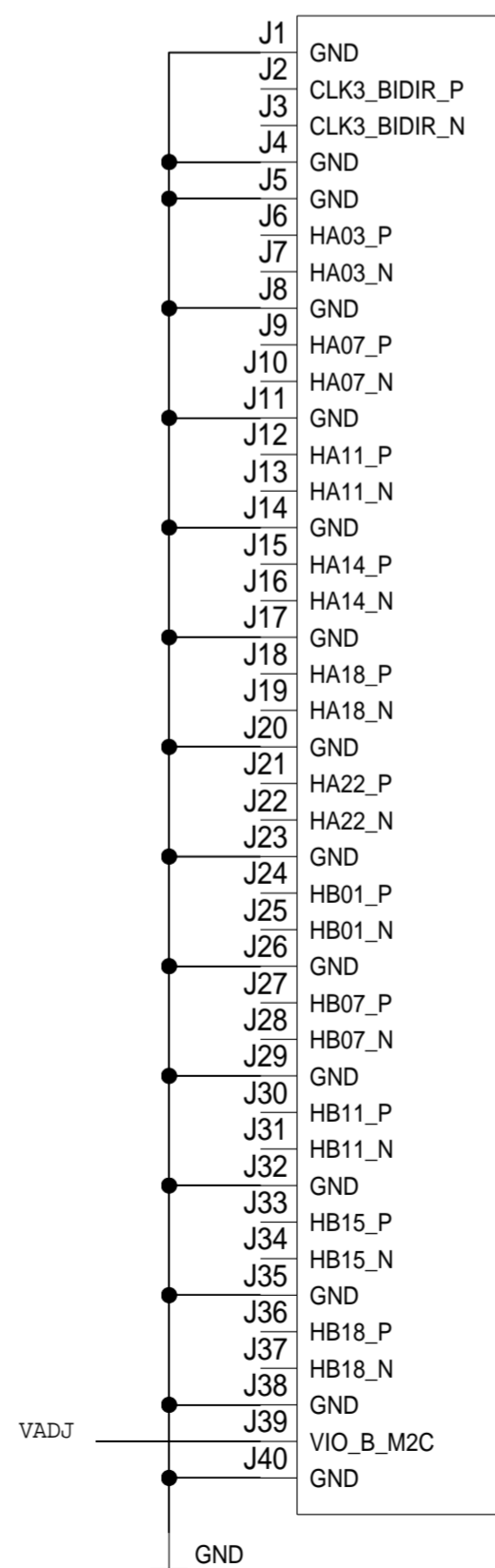
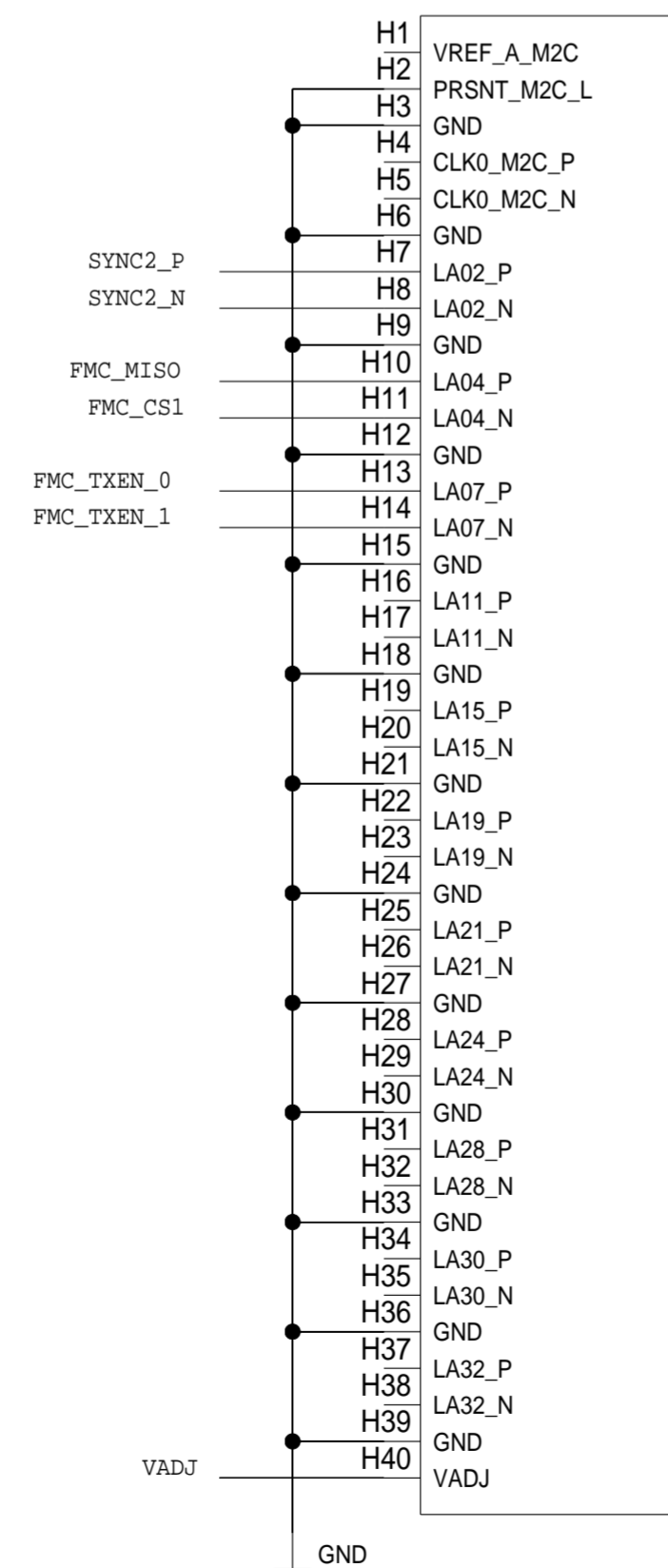
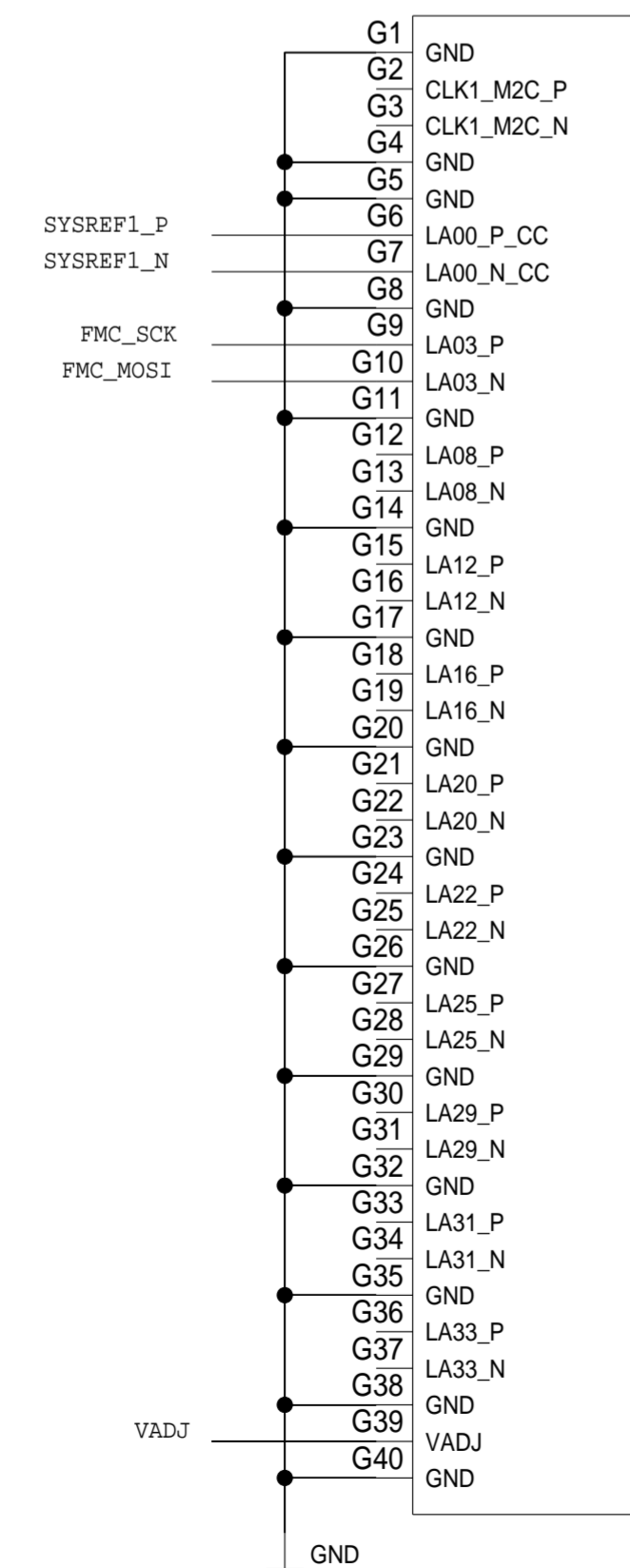
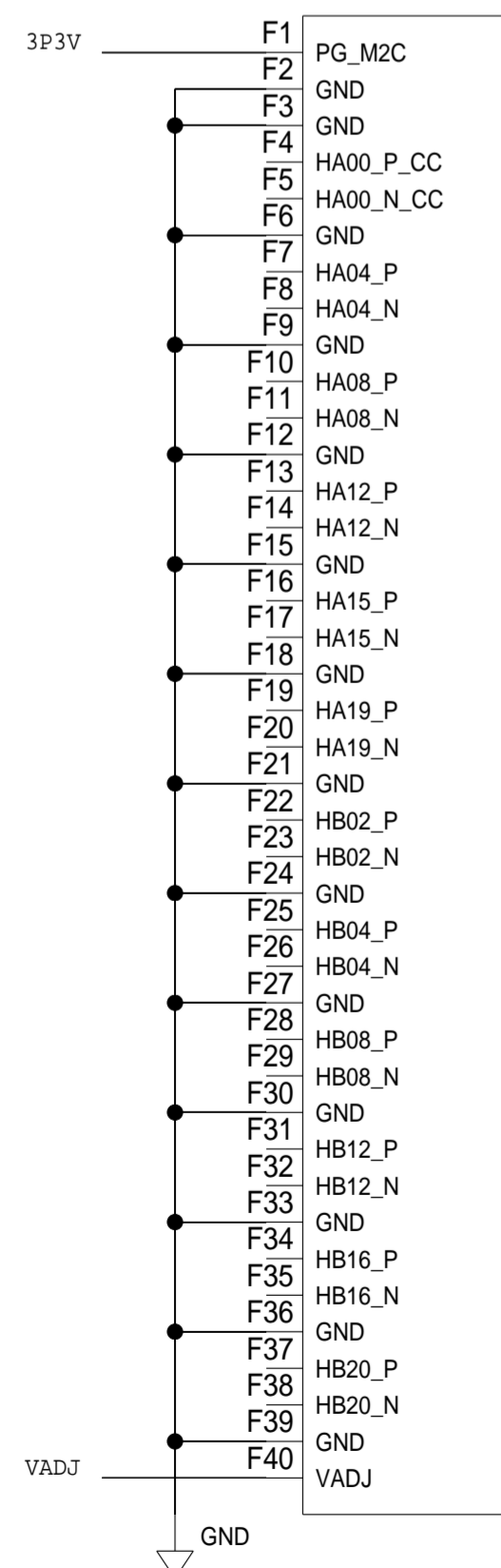
P1
ASP-134488-01

P1
ASP-134488-01

P1
ASP-134488-01

P1
ASP-134488-01

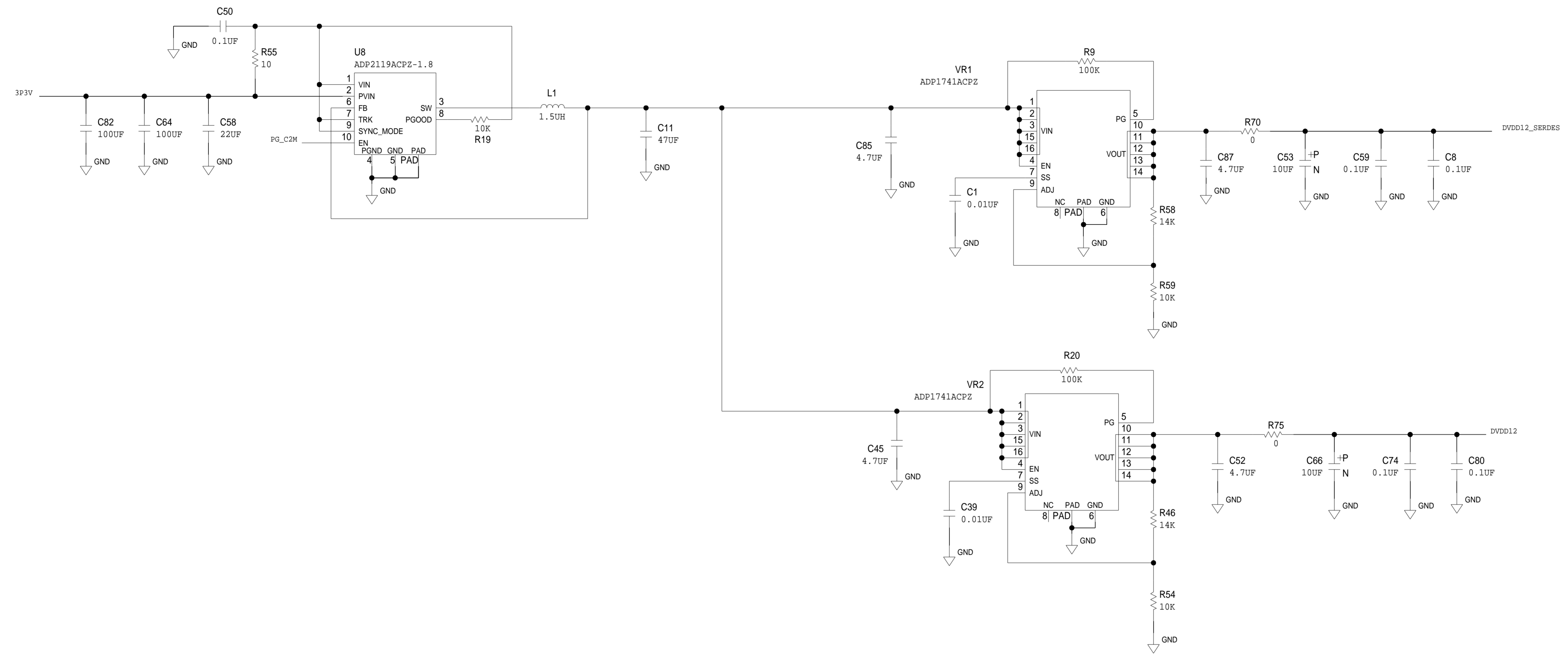
P1
ASP-134488-01



VIO_B_M2C PINS SHOULD HAVE WIDE ETCH CONNECTION TO VADJ PINS

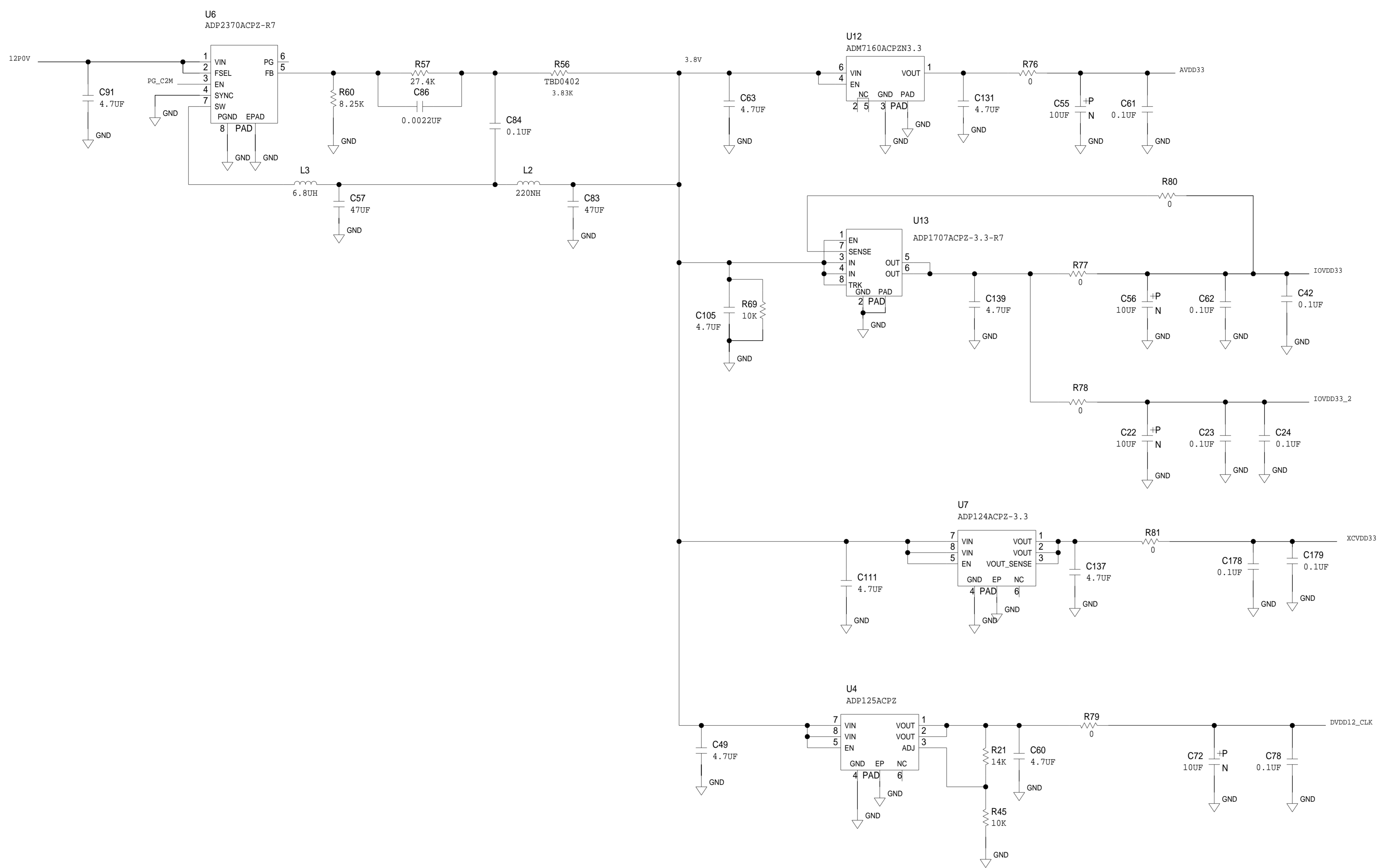
SCHEMATIC			
		HW TYPE : Customer Evaluation Product(s) : AD9144-FMC_EBZ : AD9136-FMC_EBZ AD9135-FMC_EBZ	
DESIGN VIEW <DESIGN_VIEW>	DRAWING NO. 02_049092	REV B	
PTD ENGINEER <PTD_ENGINEER>	SIZE D	SCALE 1:1	SHEET 4 OF 8

REVISIONS			
REV	DESCRIPTION	DATE	APPROVED

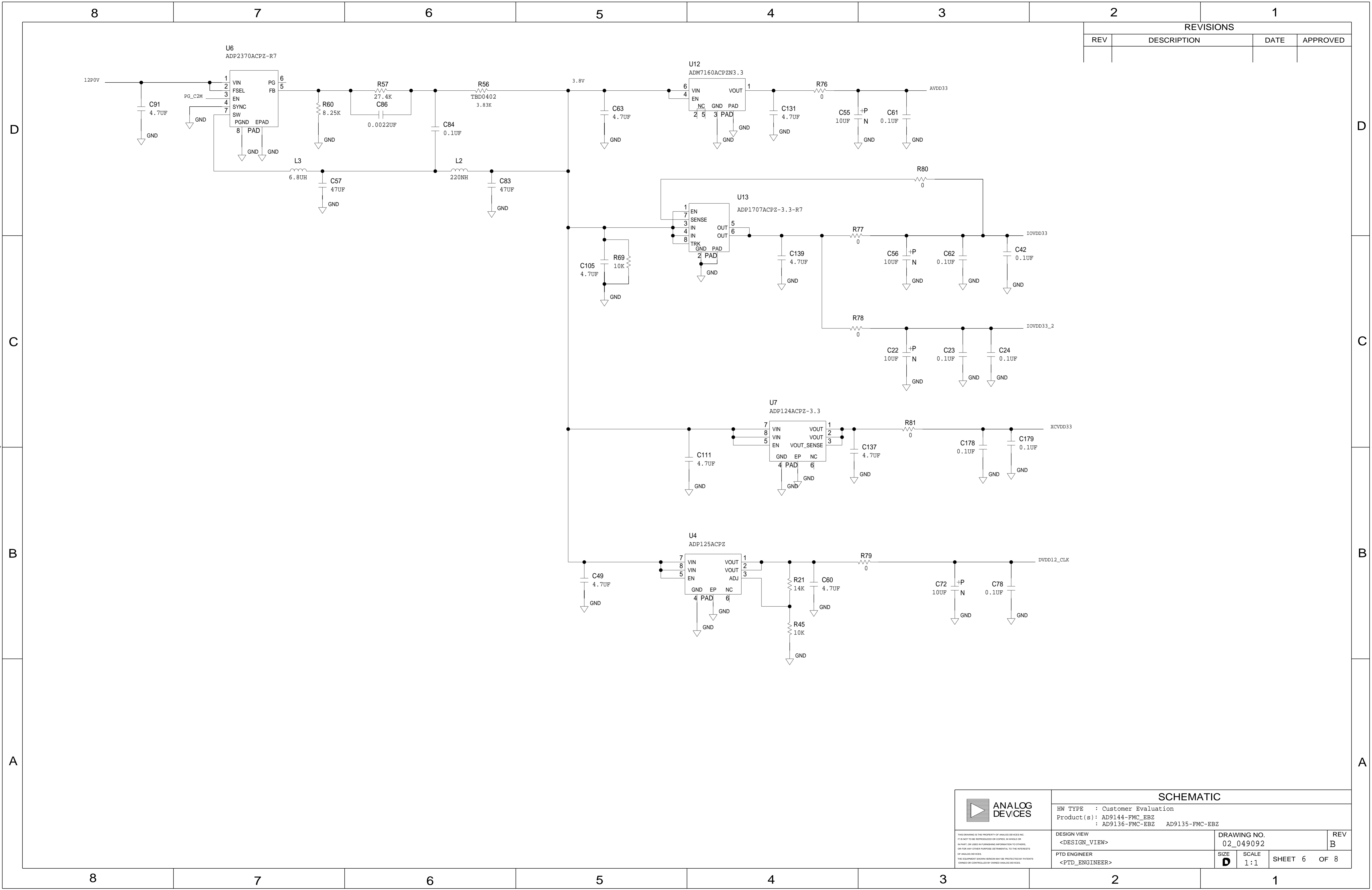


<p>THIS DRAWING IS THE PROPERTY OF ANALOG DEVICES INC. IT IS NOT TO BE REPRODUCED OR COPIED, IN WHOLE OR IN PART, OR USED IN FURNISHING INFORMATION TO OTHERS, OR FOR ANY OTHER PURPOSE DETRIMENTAL TO THE INTERESTS OF ANALOG DEVICES. THE EQUIPMENT SHOWN HEREON MAY BE PROTECTED BY PATENTS OWNED OR CONTROLLED BY ANALOG DEVICES.</p>	SCHEMATIC		
	HW TYPE : Customer Evaluation Product(s) : AD9144-FMC_EBZ : AD9136-FMC_EBZ AD9135-FMC_EBZ		
	DESIGN VIEW <DESIGN_VIEW>	DRAWING NO. 02_049092	REV B
	PTD ENGINEER <PTD_ENGINEER>	SIZE D	SCALE 1:1
		SHEET 5 OF 8	

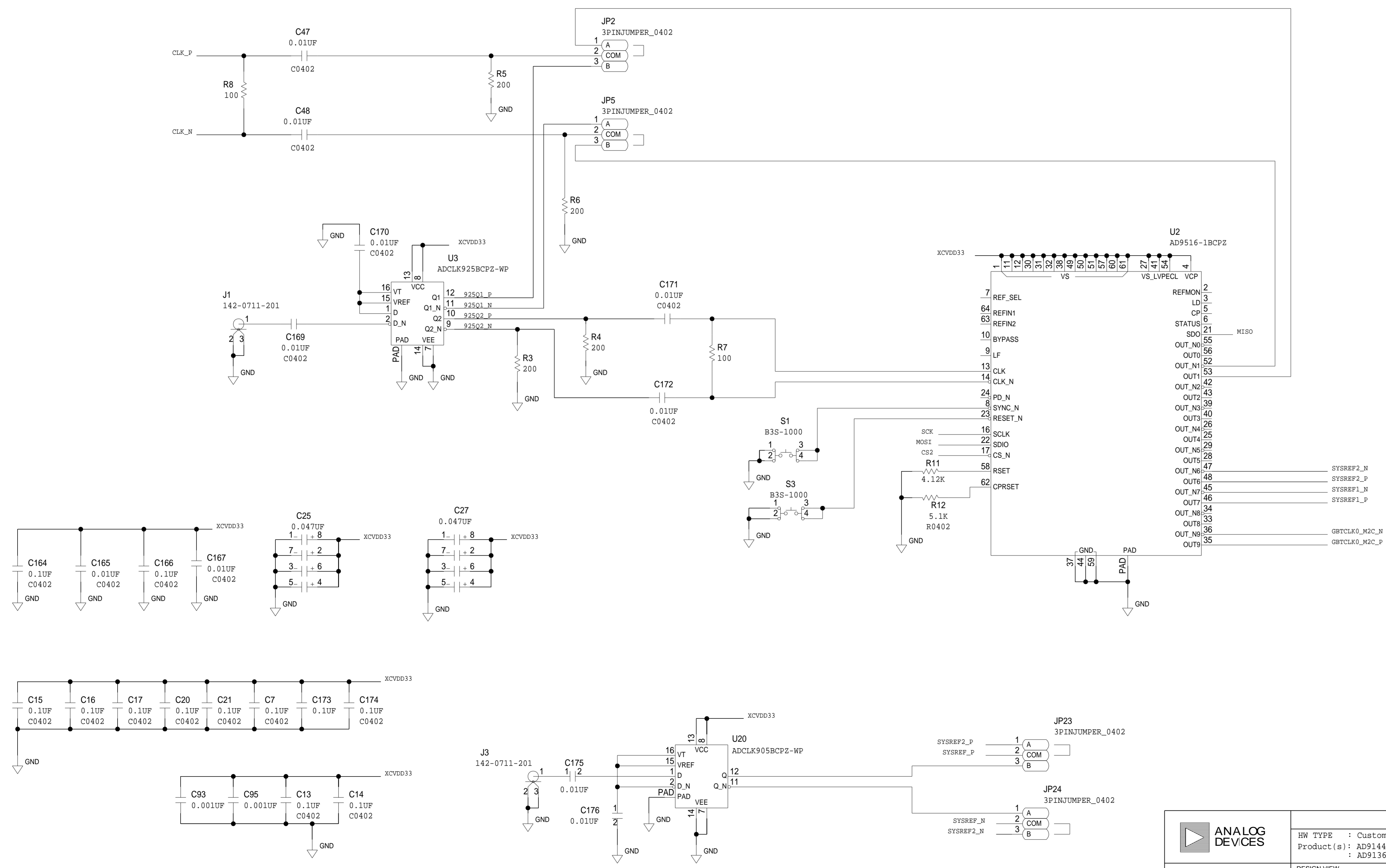
REVISIONS			
REV	DESCRIPTION	DATE	APPROVED



	SCHEMATIC		
	HW TYPE : Customer Evaluation Product(s) : AD9144-FMC_EBZ : AD9136-FMC_EBZ AD9135-FMC_EBZ		
	DESIGN VIEW <DESIGN_VIEW>	DRAWING NO. 02_049092	REV B
	PTD ENGINEER <PTD_ENGINEER>	SIZE D	SCALE 1:1
		SHEET 6 OF 8	



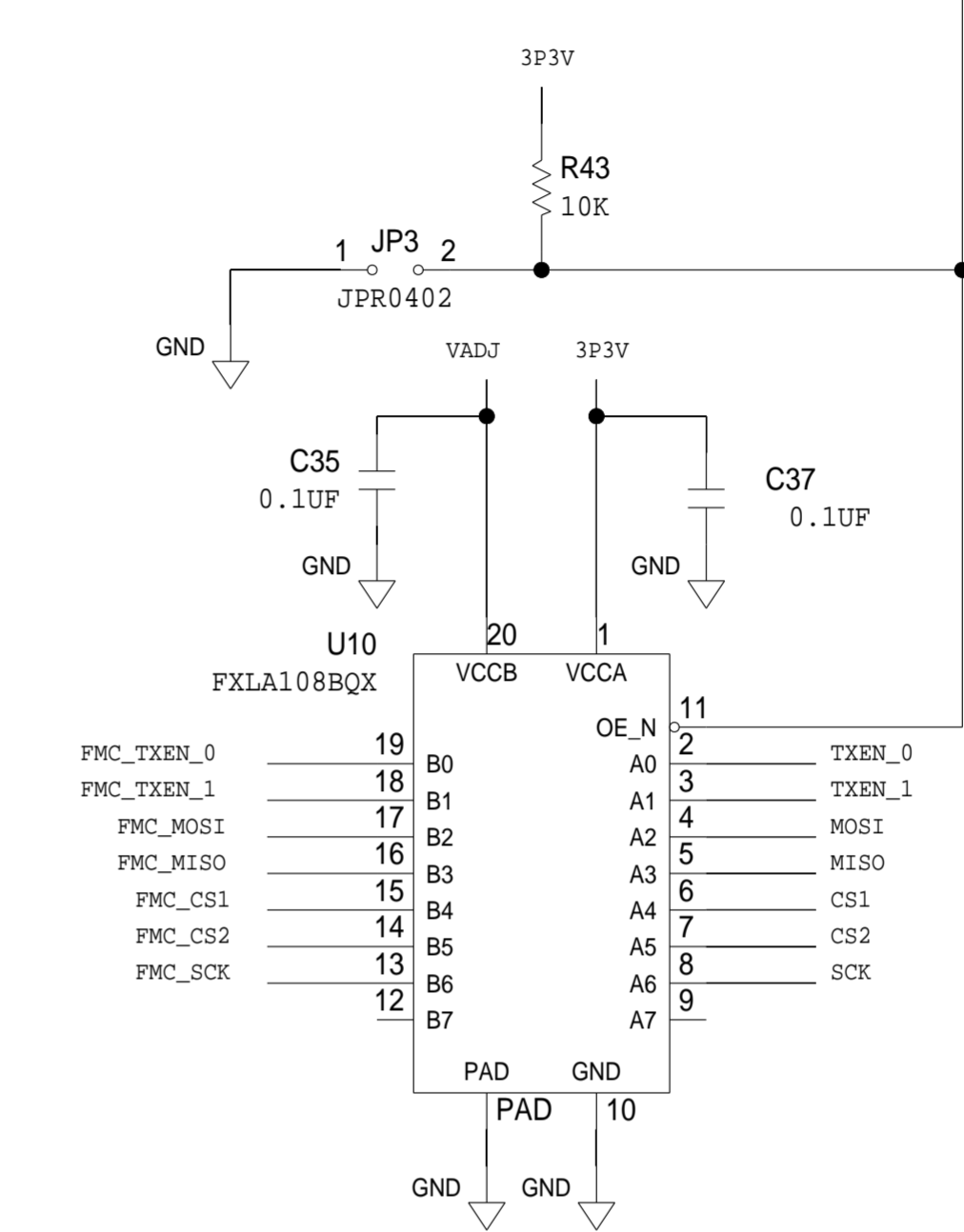
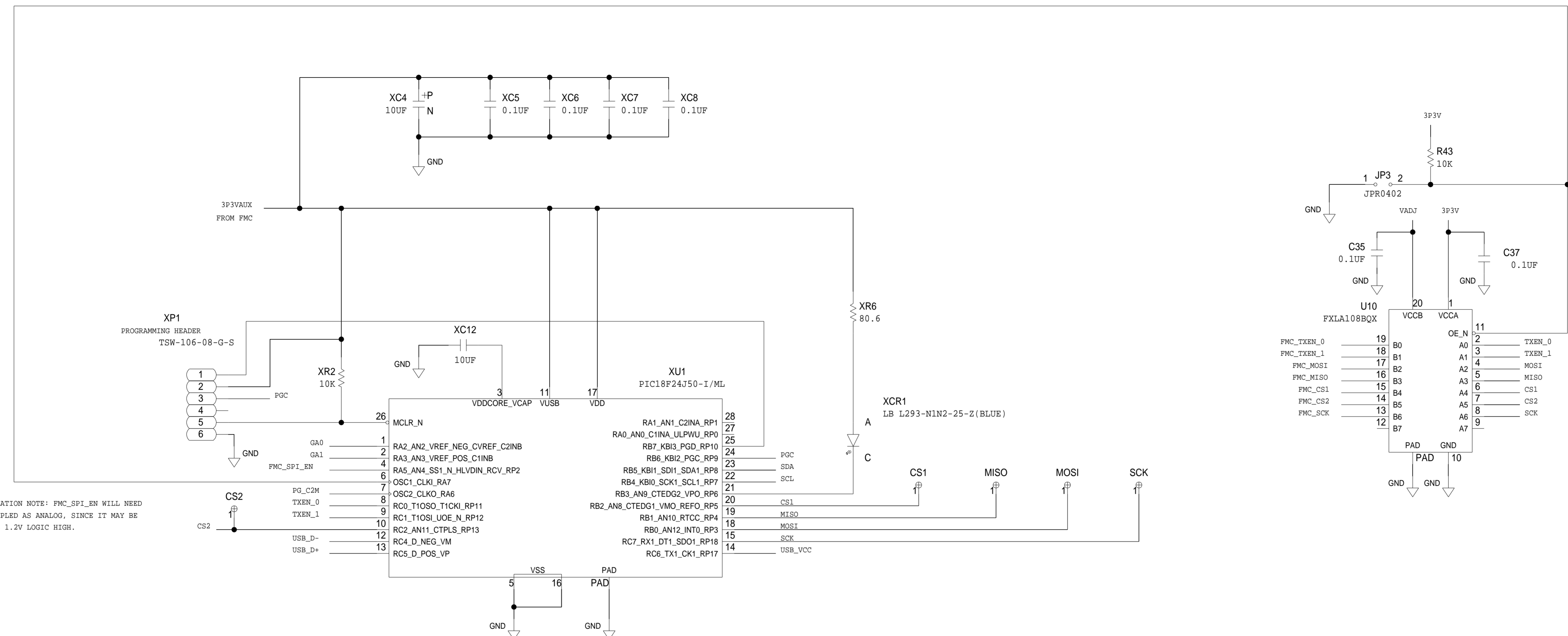
REVISIONS			
REV	DESCRIPTION	DATE	APPROVED



	SCHEMATIC		
	HW TYPE : Customer Evaluation Product(s) : AD9144-FMC-EBZ : AD9136-FMC-EBZ AD9135-FMC-EBZ		
	DESIGN VIEW <DESIGN_VIEW>	DRAWING NO. 02_049092	REV B
	PTD ENGINEER <PTD_ENGINEER>	SIZE D	SCALE 1:1

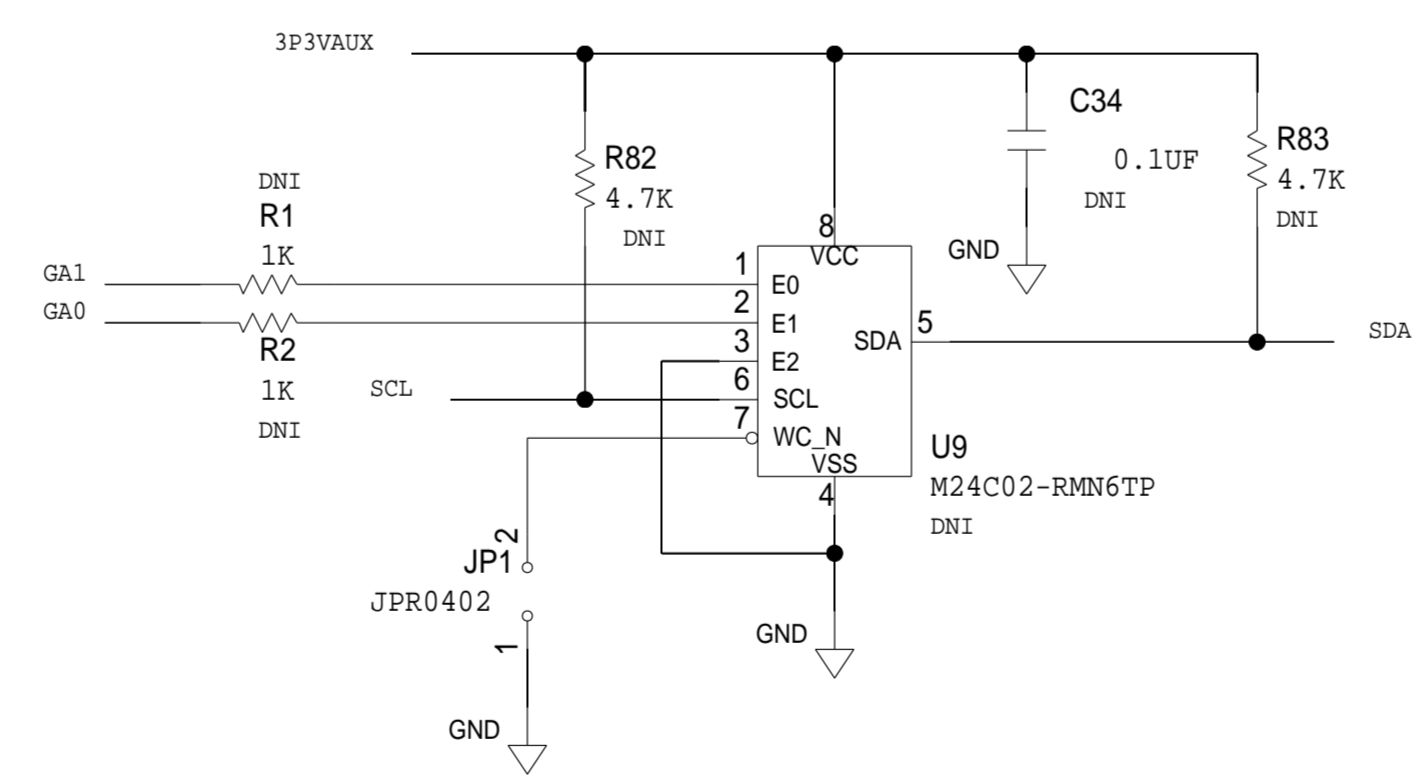
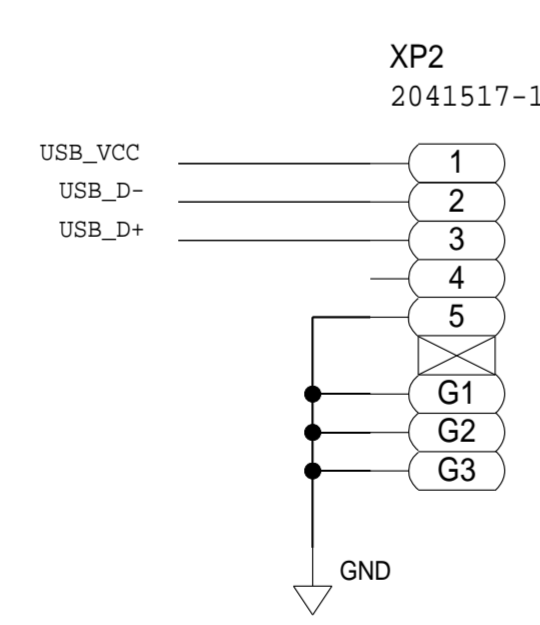
THIS DRAWING IS THE PROPERTY OF ANALOG DEVICES INC. IT IS NOT TO BE REPRODUCED OR COPIED IN WHOLE OR IN PART, OR USED IN FURNISHING INFORMATION TO OTHERS, OR FOR ANY OTHER PURPOSE DETRIMENTAL TO THE INTERESTS OF ANALOG DEVICES. THE EQUIPMENT SHOWN HEREIN MAY BE PROTECTED BY PATENTS OWNED OR CONTROLLED BY ANALOG DEVICES.

REVISIONS			
REV	DESCRIPTION	DATE	APPROVED



IMPLEMENTATION NOTE: FMC_SPI_EN WILL NEED TO BE SAMPLED AS ANALOG, SINCE IT MAY BE AS LOW AS 1.2V LOGIC HIGH.

NOTE:
 IF USB CABLE IS PLUGGED IN PIC IS THE SOURCE OF SPI BUS AND TXEN SIGNALS
 IF USB IS UNPLUGGED FMC INTERFACE IS THE SOURCE OF SPI BUS AND TXEN SIGNAL.



	SCHEMATIC		
	HW TYPE : Customer Evaluation Product(s) : AD9144-FMC-EBZ : AD9136-FMC-EBZ AD9135-FMC-EBZ		
	DESIGN VIEW <DESIGN_VIEW>	DRAWING NO. 02_049092	REV B
	PTD ENGINEER <PTD_ENGINEER>	SIZE D	SCALE 1:1
SHEET 8 OF 8			