

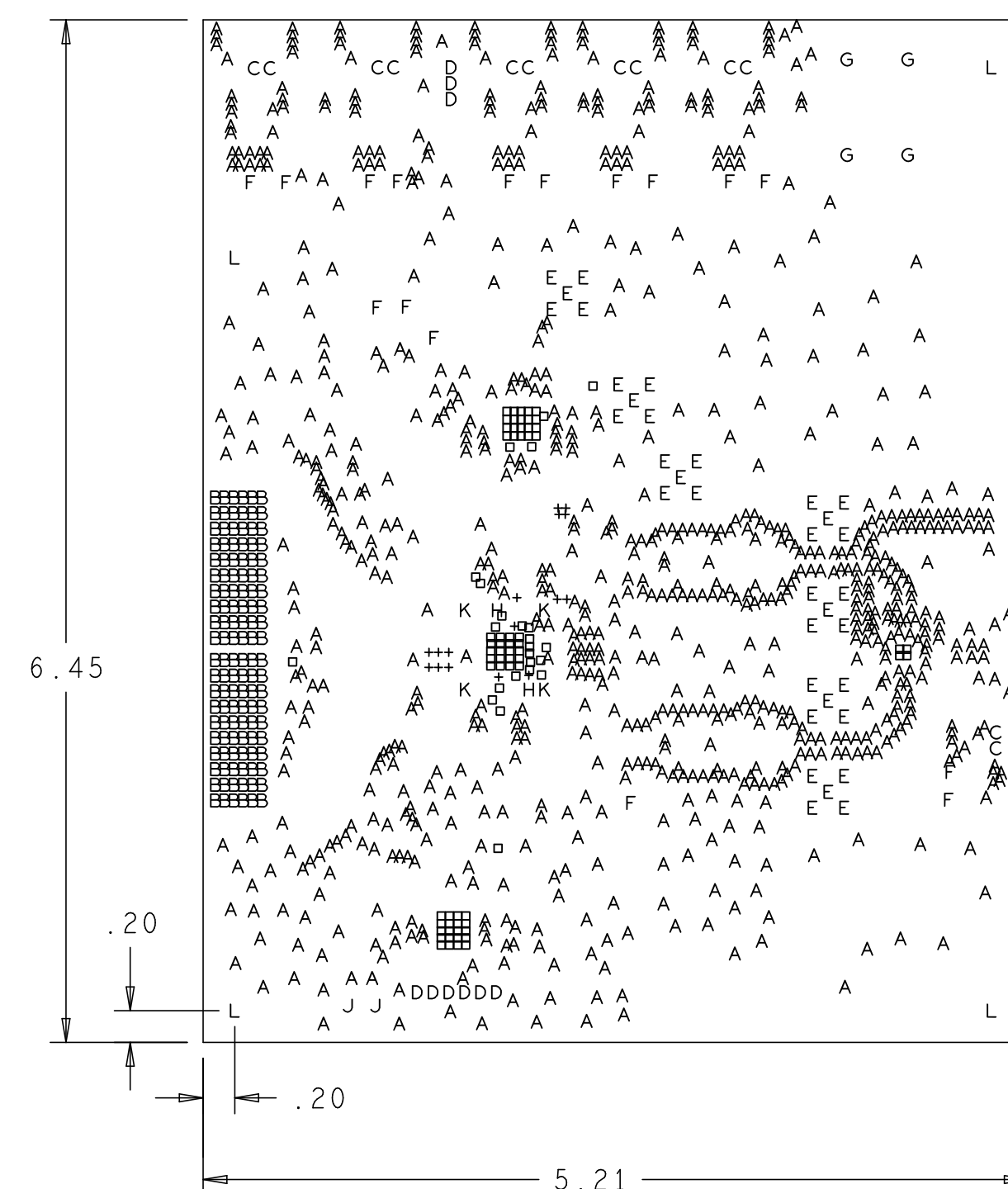
REVISIONS			
REV	DESCRIPTION	DATE	APPROVED
A	INITIAL RELEASE	31JUL08	Y.Z.
B	CHANGE CONNECTOR CONNECTIONS	01DEC09	Y.Z.
C	UPDATES	17FEB10	Y.Z.

NOTES:

- MATERIALS; FR-4, IN ACCORDANCE WITH IS410 (LATEST REV.). GLASS FABRIC BASE, EPOXY RESIN, FIRE RESISTANT.  
 BONDING AGENT; PREIMPREGNATED B STAGE EPOXY GLASS CLOTH IN ACCORDANCE WITH IPC-L-109 (LATEST REV.).  
 CLADDING; EXTERNAL LAYERS 1/2 OZ. COPPER, OVERPLATE TO 1 1/2 OZ. INTERNAL PLANE LAYERS 1/2 OZ. COPPER.  
 SOLDER MASK; SHALL BE BLUE LIQUID PHOTOIMAGABLE (LPI) APPLIED ON BOTH SIDES OVER BARE COPPER AND SHALL MEET IPC-SM-840 (LATEST REV.) CLASS 3.  
 SILK SCREEN; SHALL BE PERMANENT NON-CONDUCTIVE EPOXY INK, COLOR WHITE.  
 U.L. RATING; 94VO MINIMUM.

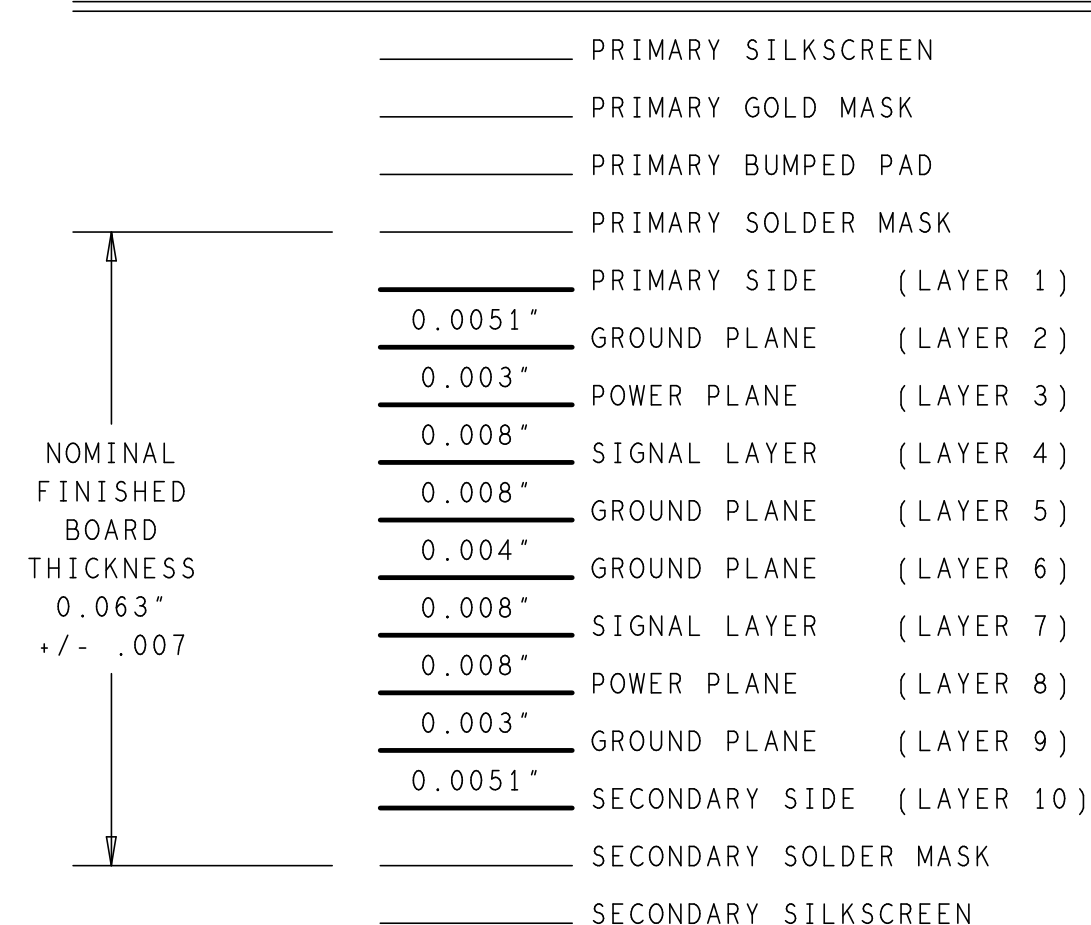
FABRICATION:

- REFER TO IPC-6010 SERIES (LATEST REV.), CLASS 2 FOR FABRICATION UNLESS OTHERWISE SPECIFIED.
- UNDIMENSIONED HOLES TO BE LOCATED WITHIN +/- .005 OF THEIR TRUE POSITION WITH RESPECT TO ARTWORK.
- PLATED HOLE WALL THICKNESS SHALL NOT BE LESS THAN .001 INCH MINIMUM AVERAGE, WITH NO READING LESS THAN .0008 BY CROSS SECTION.
- HOLE DIAMETERS APPLY AFTER PLATING.
- FINISHED CONDUCTOR WIDTHS SHALL NOT BE REDUCED FROM THE NOMINAL, INDICATED ON THE MASTER PATTERN, BY MORE THAN THE CONDUCTOR THICKNESS.
- MINIMUM DESIGN LINE WIDTH IS .005 INCH.
- MINIMUM DESIGN SPACING IS .005 INCH.
- BOARD/PANEL MUST MEET IPC-A-600 (LATEST REV.) CLASS 2 FOR FLATNESS.
- MFR. TO LEGIBLY ETCH OR STAMP/SCREEN WITH PERMANENT NON-CONDUCTIVE INK ON SECONDARY SIDE IN A CLEAR AREA UNLESS OTHERWISE INDICATED;  
 A. U.L. CODE                      D. MFR. LOGO  
 B. DATE CODE (STAMP)        E. SUCCESSFUL ELECTRICAL BOARD TEST.  
 C. FLAMMABILITY RATING
- NON-FUNCTIONAL PADS MAY BE REMOVED FROM INNER SIGNAL LAYERS AT MFR. DISCRETION.
- IF PAD SIZES PROVIDED ARE NOT LARGE ENOUGH TO MAINTAIN ANNULAR RING REQUIREMENT, MFR. MAY TEAR DROP PADS TO MAINTAIN ANNULAR RING AT PAD TO CIRCUIT INTERFACE ONLY AND MUST INSURE ELECTRICAL INTEGRITY.
- REPAIRS PER IPC-R-700 ARE ALLOWED.
- MODIFICATIONS TO THE ARTWORK, OTHER THAN THOSE DESCRIBED ON THE FABRICATION DRAWING, ARE NOT ALLOWED WITHOUT WRITTEN AUTHORIZATION.
- SURFACE TO BE HARD GOLD PLATE IN PRIMARY AND SECONDARY PROCESS. PER MIL-G-45204B, CLASS 1, GRADE C, TYPE I. PRIMARY GOLD TO BE 05-15 MICRO INCHES MAXIMUM OVER LOW STRESS NICKEL PLATING PER QQ-N-290, CLASS 1. REPLATE SECONDARY PROCESS WITH 50 MICRO INCHES MINIMUM ON SELECTIVE AREA PROVIDED.  
 0.010 AND 0.015 VIAS TO BE NON-CONDUCTIVE EPOXY FILLED, AND GROUND FLUSH PRIOR TO OVER PLATING..



PRIMARY SIDE

10 LAYER STACKUP



CHARACTERISTIC IMPEDANCE = 50 OHMS +/- 10%  
 ARTWORK LINE WIDTH FOR IMPEDANCE CONTROLLED LINES = 0.008" FOR LAYER 1,4,7 AND 10.  
 DIFFERENTIAL IMPEDANCE = 100 OHMS +/- 10%  
 ARTWORK LINE WIDTH FOR IMPEDANCE CONTROLLED LINES = 0.005" FOR LAYER 1 AND 10.

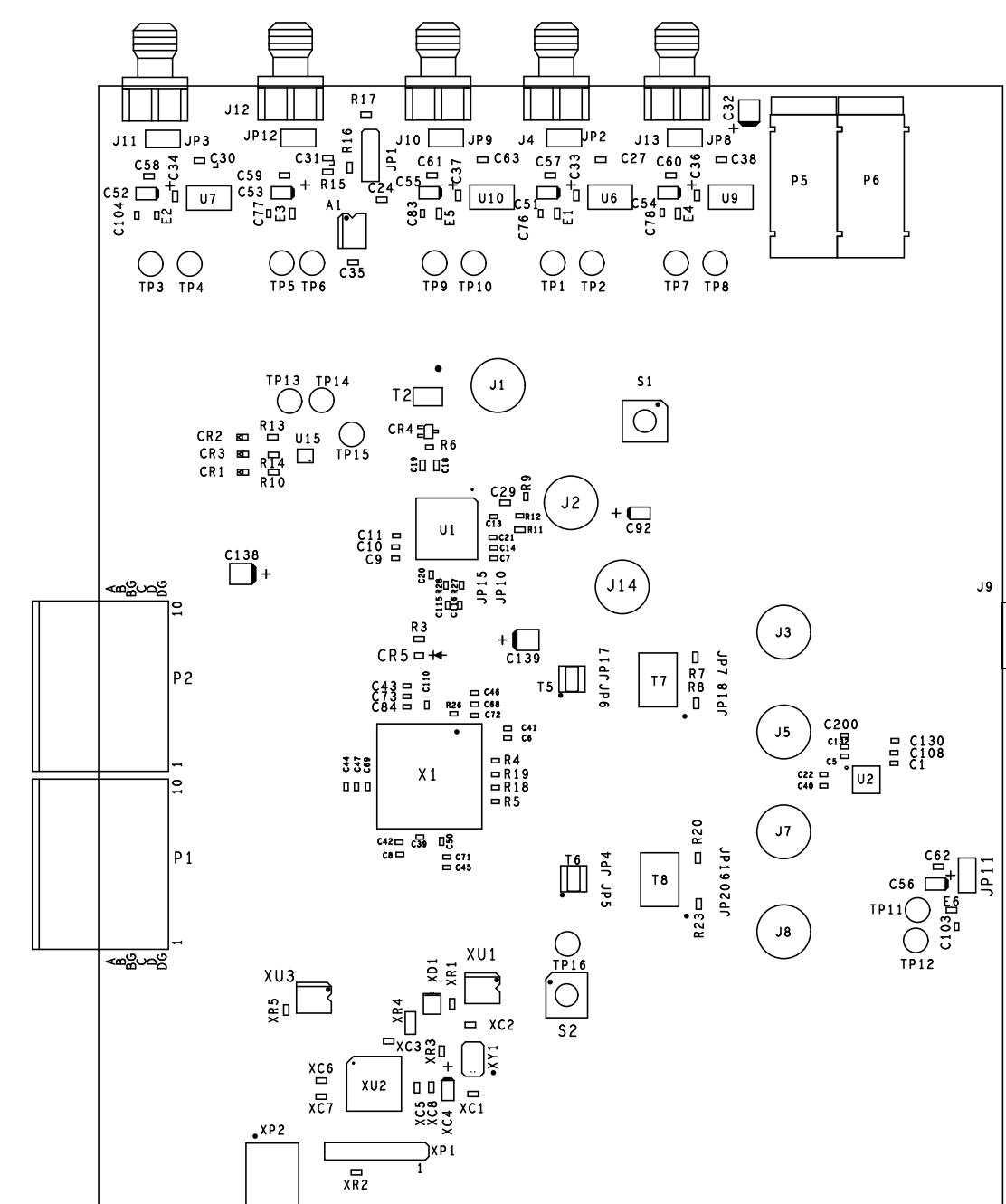
HOLE TOLERANCE

UNLESS SPECIFIED  
 PLATED: +/- .003  
 NON PLATED: +/- .001

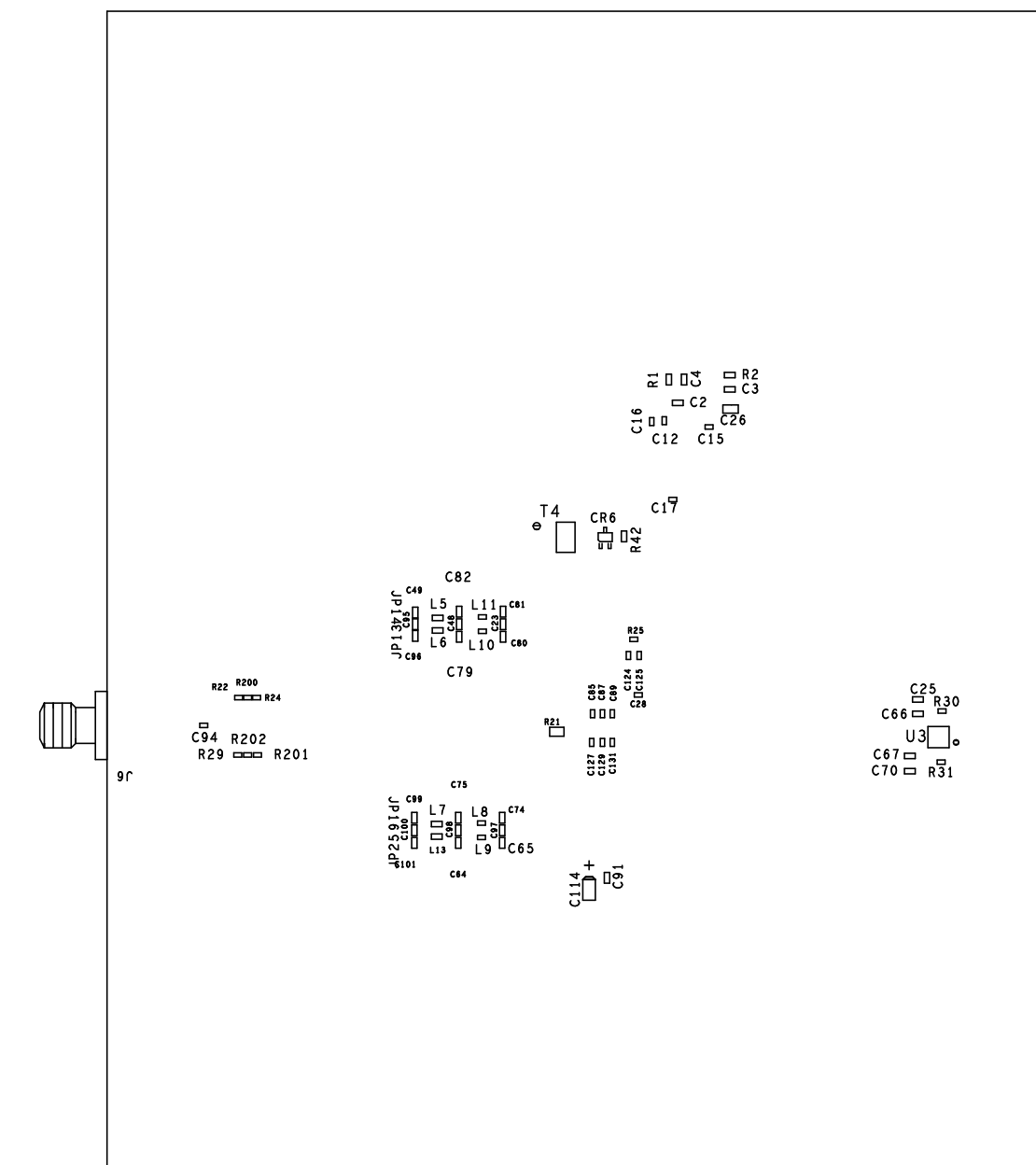
FINISHED HOLES IN MILS				
ALL UNITS ARE IN MILS				
FIGURE	SIZE	PLATED	QTY	TOLERANCE/NOTES
+	10.0	PLATED	16	SEE NOTE 15
o	15.0	PLATED	88	SEE NOTE 15
A	16.0	PLATED	809	
B	25.0	PLATED	120	
C	40.0	PLATED	12	
D	45.0	PLATED	9	
E	60.0	PLATED	35	
F	63.0	PLATED	16	
G	75.0	PLATED	4	
H	33.0	NON-PLATED	2	
J	40.0	NON-PLATED	2	
K	63.0	NON-PLATED	4	
L	155.0	NON-PLATED	4	

UNLESS OTHERWISE SPECIFIED DIMENSIONS ARE IN INCHES TOLERANCES DECIMALS FRACTIONS ANGLES .XX .010 .1/32 .1/2 .XXX .005 .1/2	NCDRILL		ANALOG DEVICES		HSC DIVISION 804 WOBURN STREET WILMINGTON, MA 01887
	APPROVAL	DATE	TITLE		
MATERIAL	DRAWN BY P.M.A.	17FEB10	AD9125-M5375-EBZ BOARD		
DESIGNED	CHECKED	APPROVED	SIZE	FSCM NO	DRAWING NUMBER
		MFG ENGINEER	D		09-013033
DO NOT SCALE DWG			SCALE	1/1	SHEET 1 OF 2


REVISIONS			
REV	DESCRIPTION	DATE	APPROVED
A	INITIAL RELEASE	31JUL08	Y. Z.
B	CHANGE CONNECTOR CONNECTIONS	01DEC09	Y. Z.
C	UPDATES	17FEB10	Y. Z.



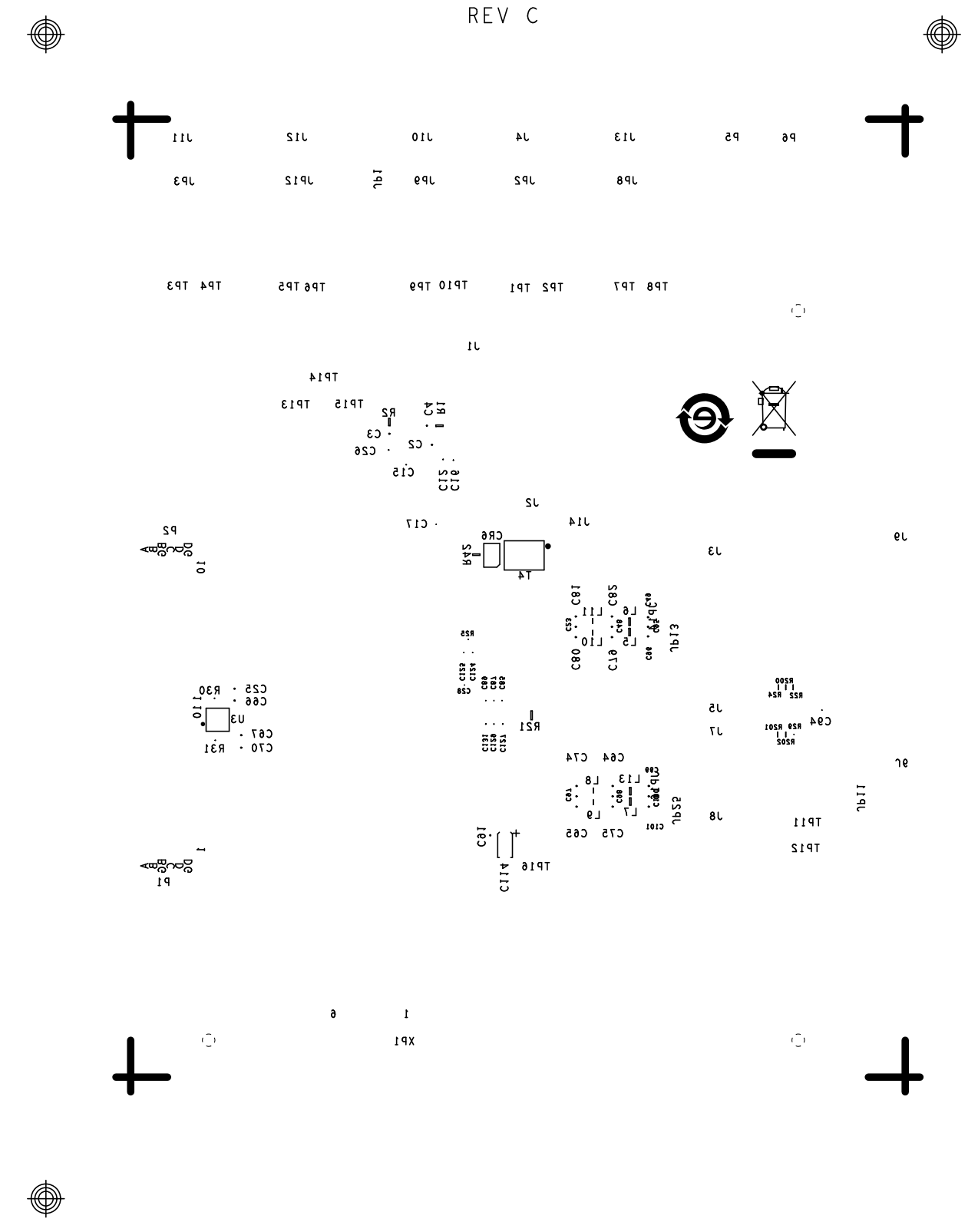
PRIMARY SIDE



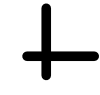
SECONDARY SIDE

UNLESS OTHERWISE SPECIFIED DIMENSIONS ARE IN INCHES		TOLERANCES		 ANALOG DEVICES HSC DIVISION 804 WOBURN STREET WILMINGTON, MA 01887	
APPROVAL		DATE		TITLE	
DRAWN BY P. M. A.		17FEB10		AD9125-M5375-EBZ BOARD	
DESIGNED				SIZE	
CHECKED				FSCM NO	
APPROVED				DRAWING NUMBER	
MFG ENGINEER				01-013033	
DO NOT SCALE DWG		SCALE 1/1		SHEET 1 OF 1	

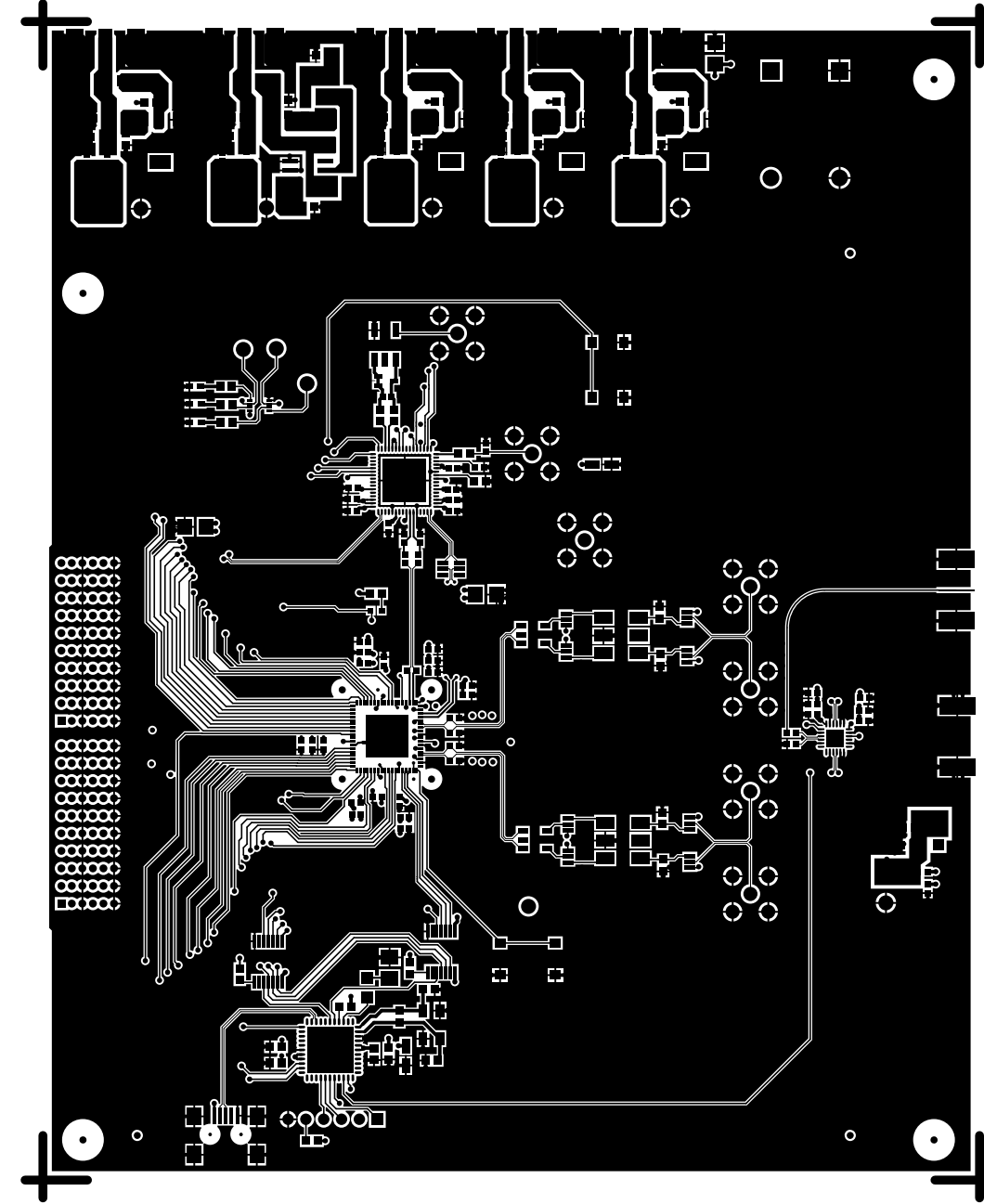
SILKSCREEN SECONDARY  
08-013033-06  
REV C



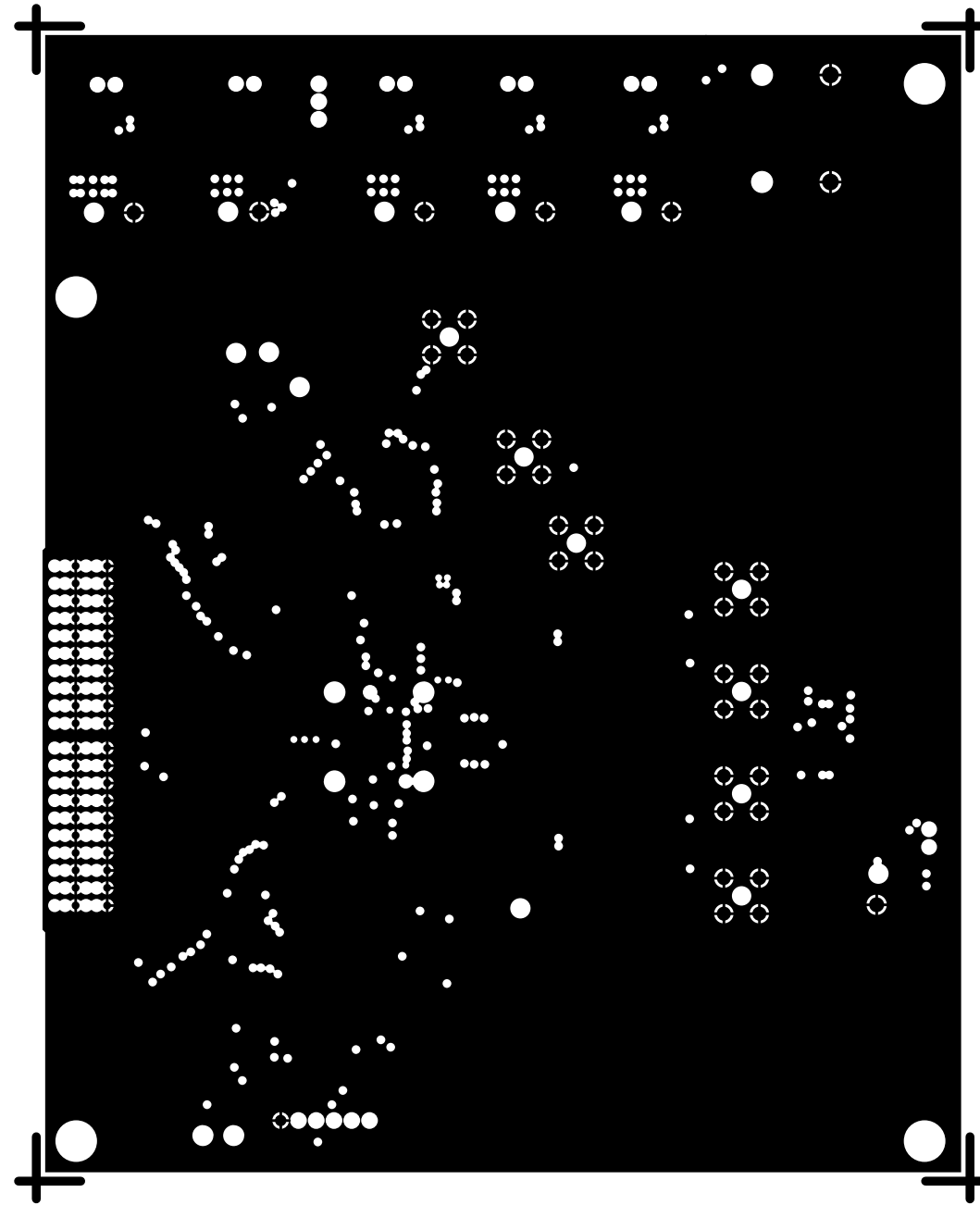
GOLDMASK PRIMARY  
08-013033-18  
REV C



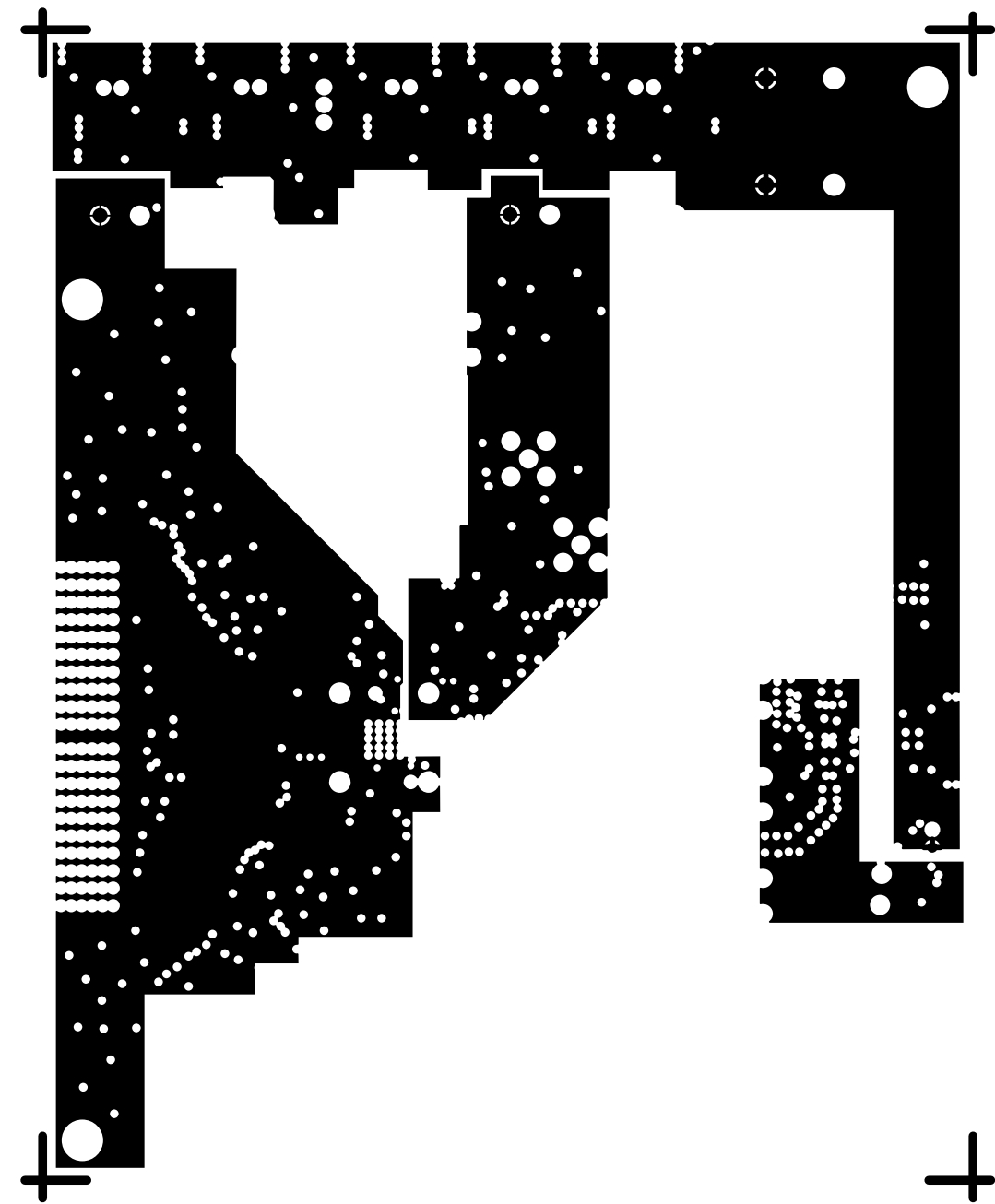
L1 PRIMARY  
08-013033-01  
REV C



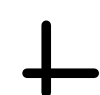
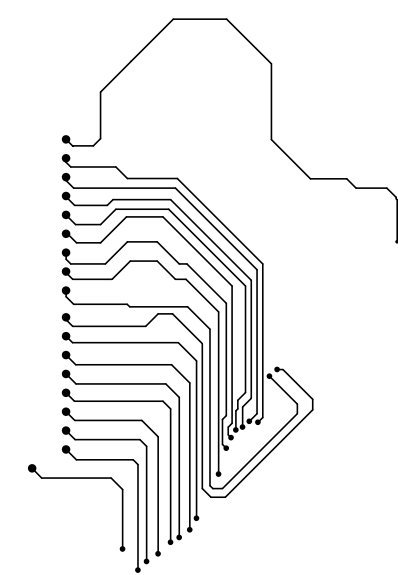
L2 GND  
08-013033-07  
REV C



L3 PWR  
08-013033-08  
REV C

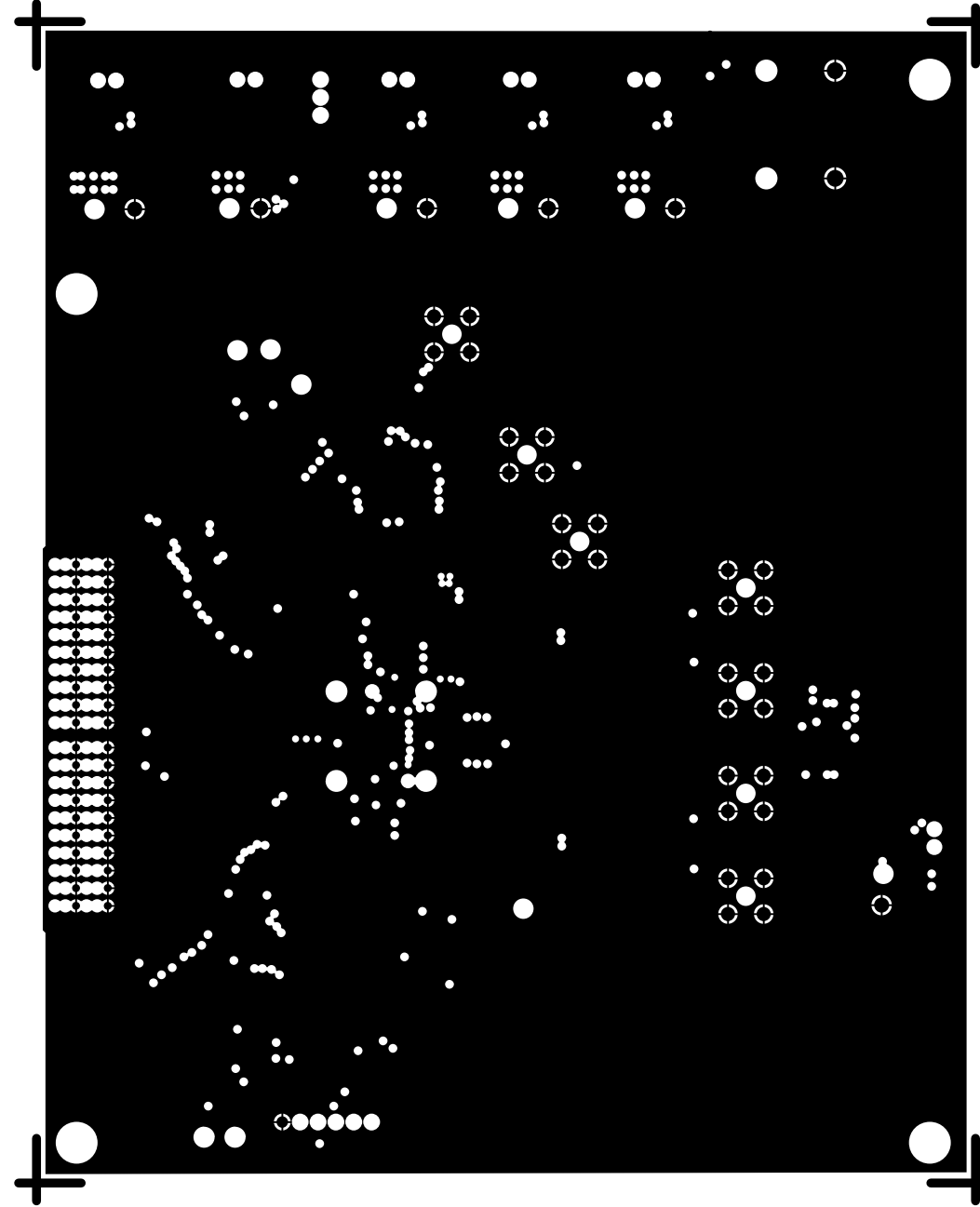


L4 SIGNAL  
08-013033-09  
REV C

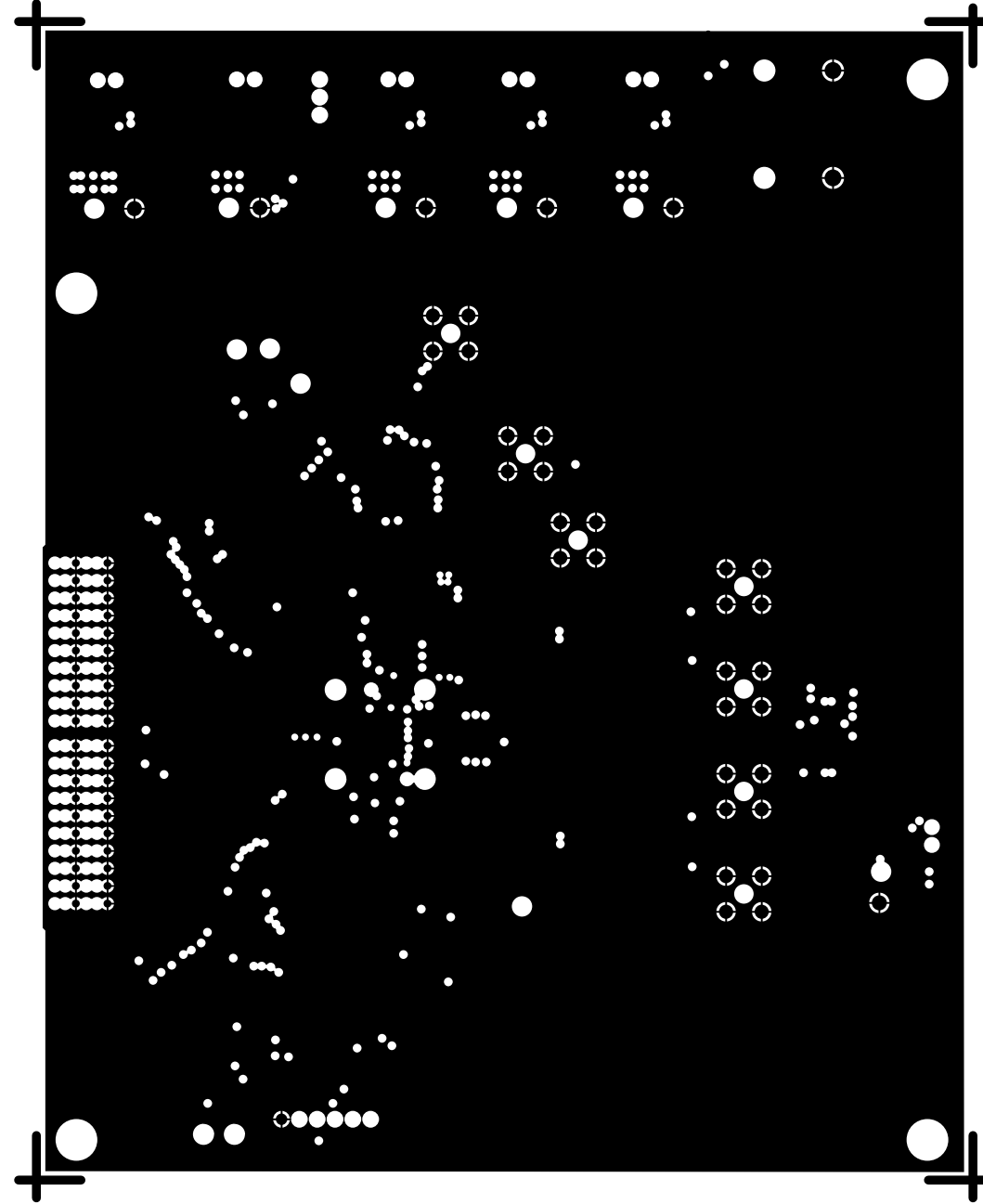




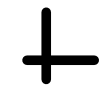
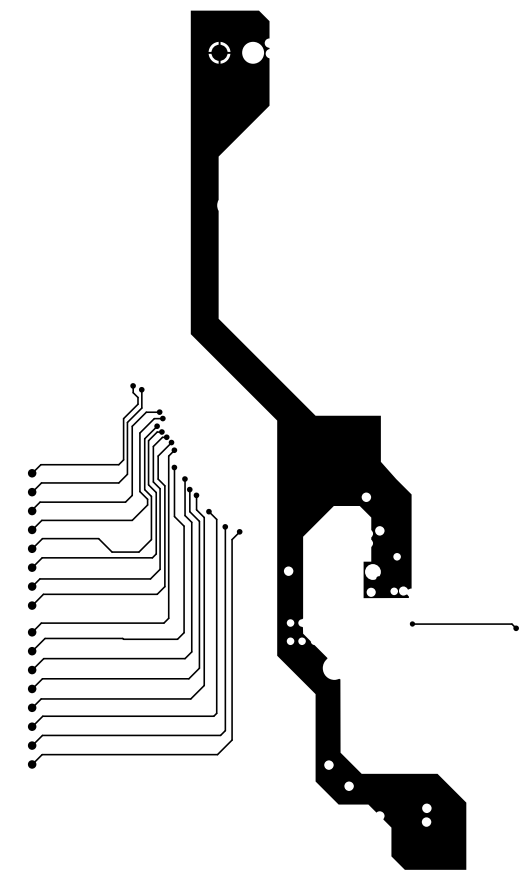
L5 GND  
08-013033-10  
REV C



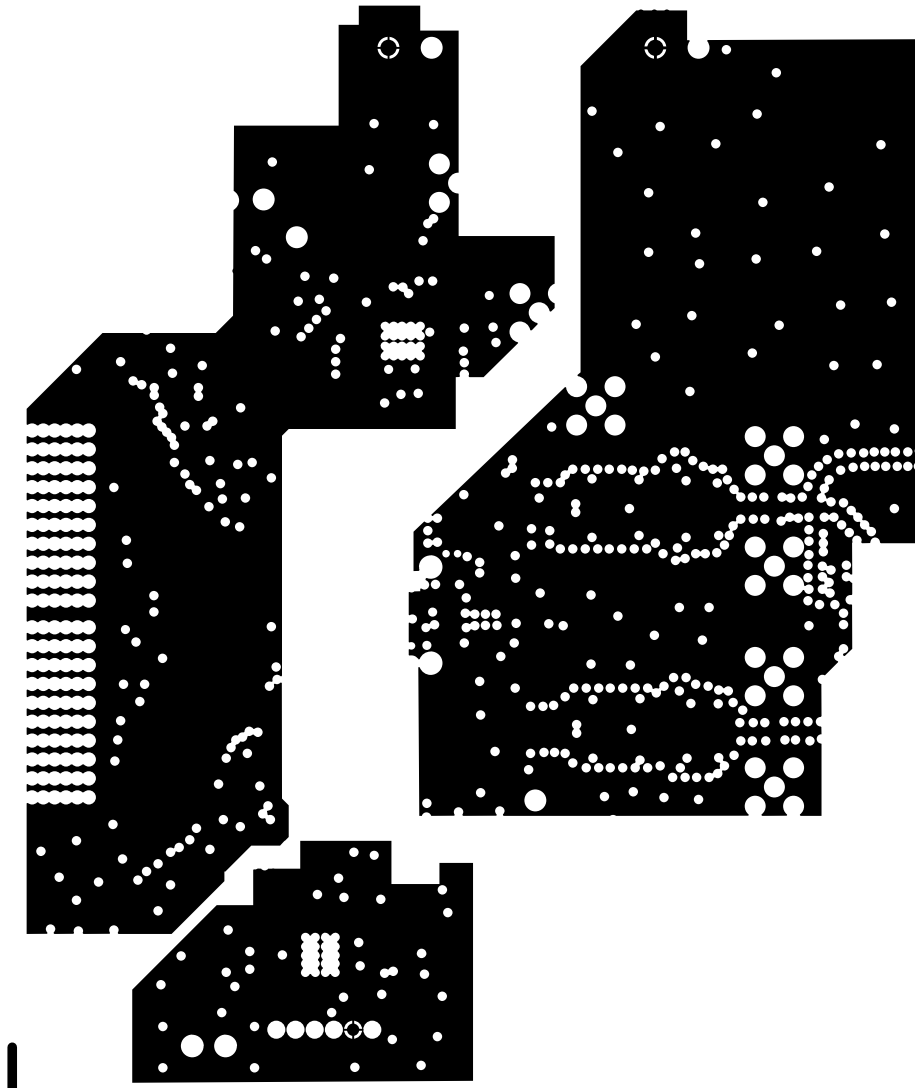
L6 GND  
08-013033-11  
REV C



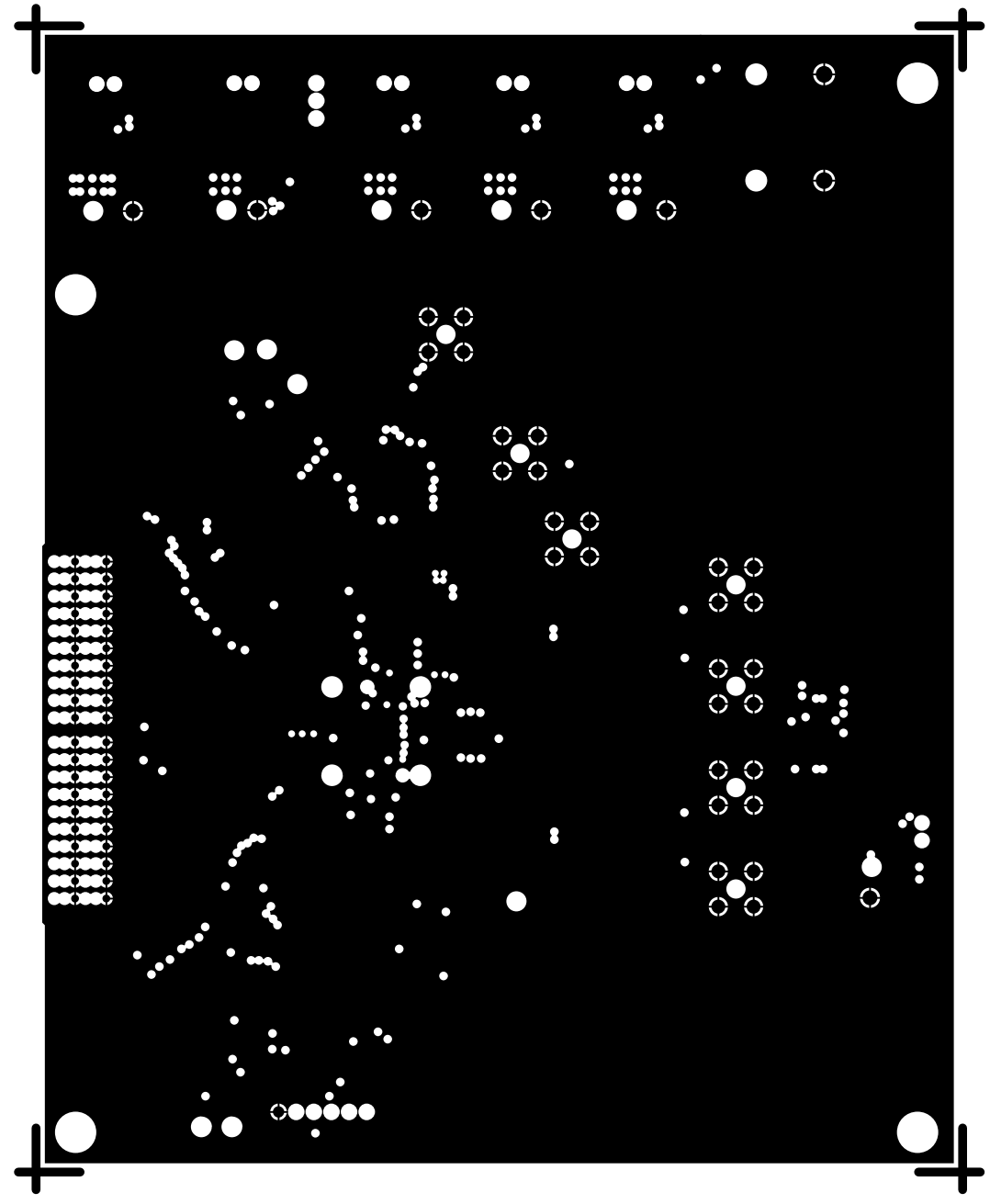
L7 SIGNAL  
08-013033-12  
REV C



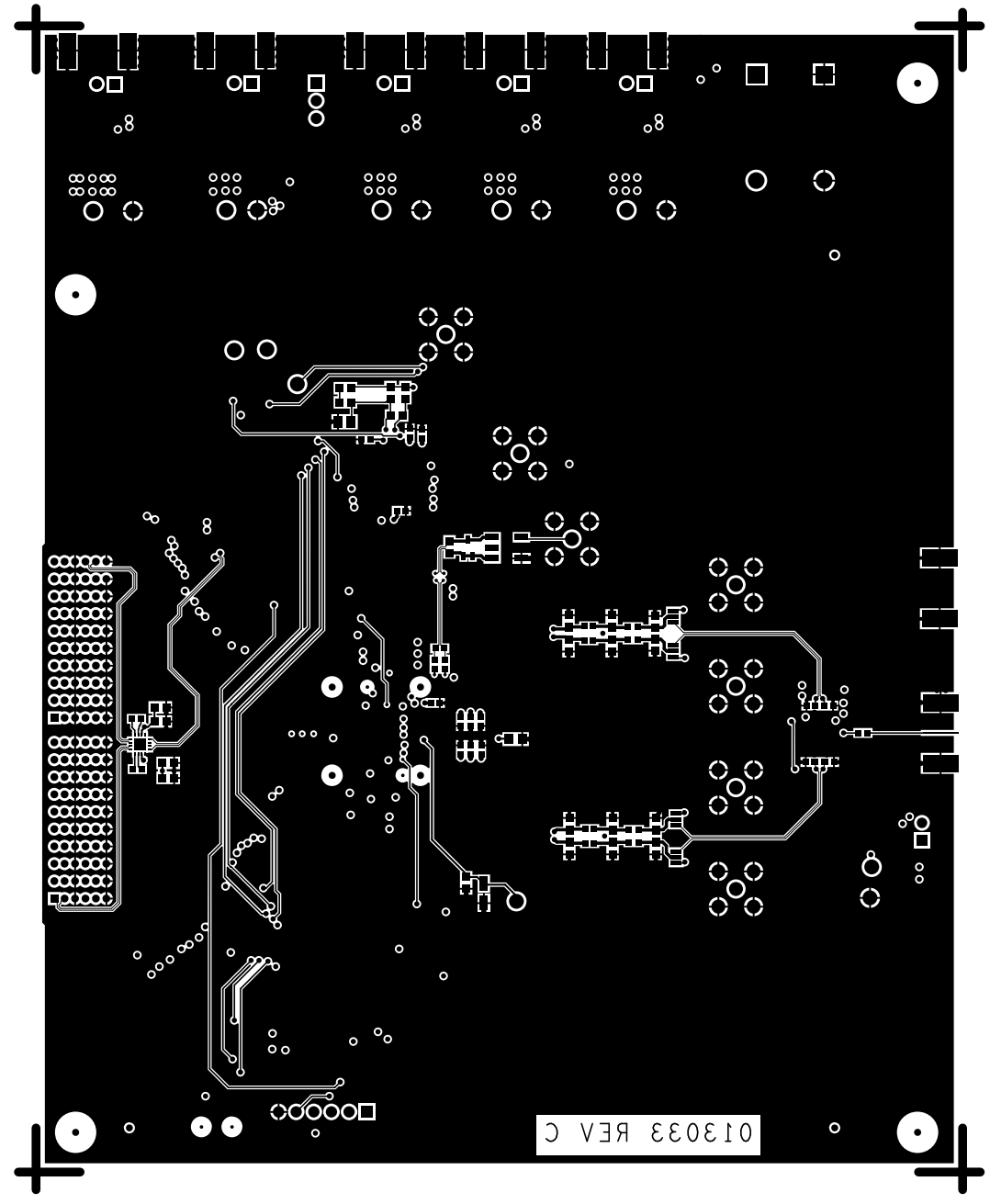
L8 PWR  
08-013033-13  
REV C



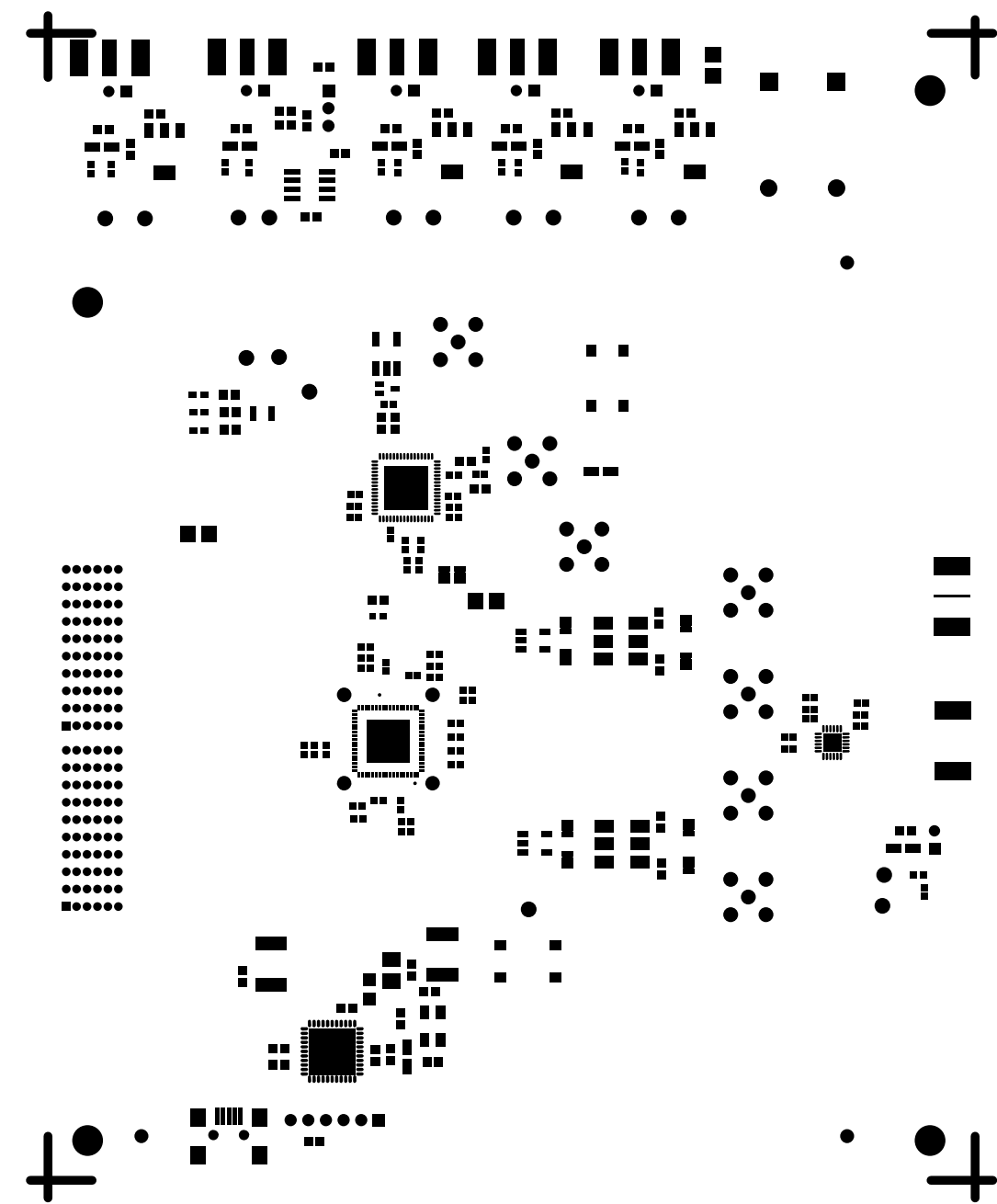
L9 GND  
08-013033-14  
REV C



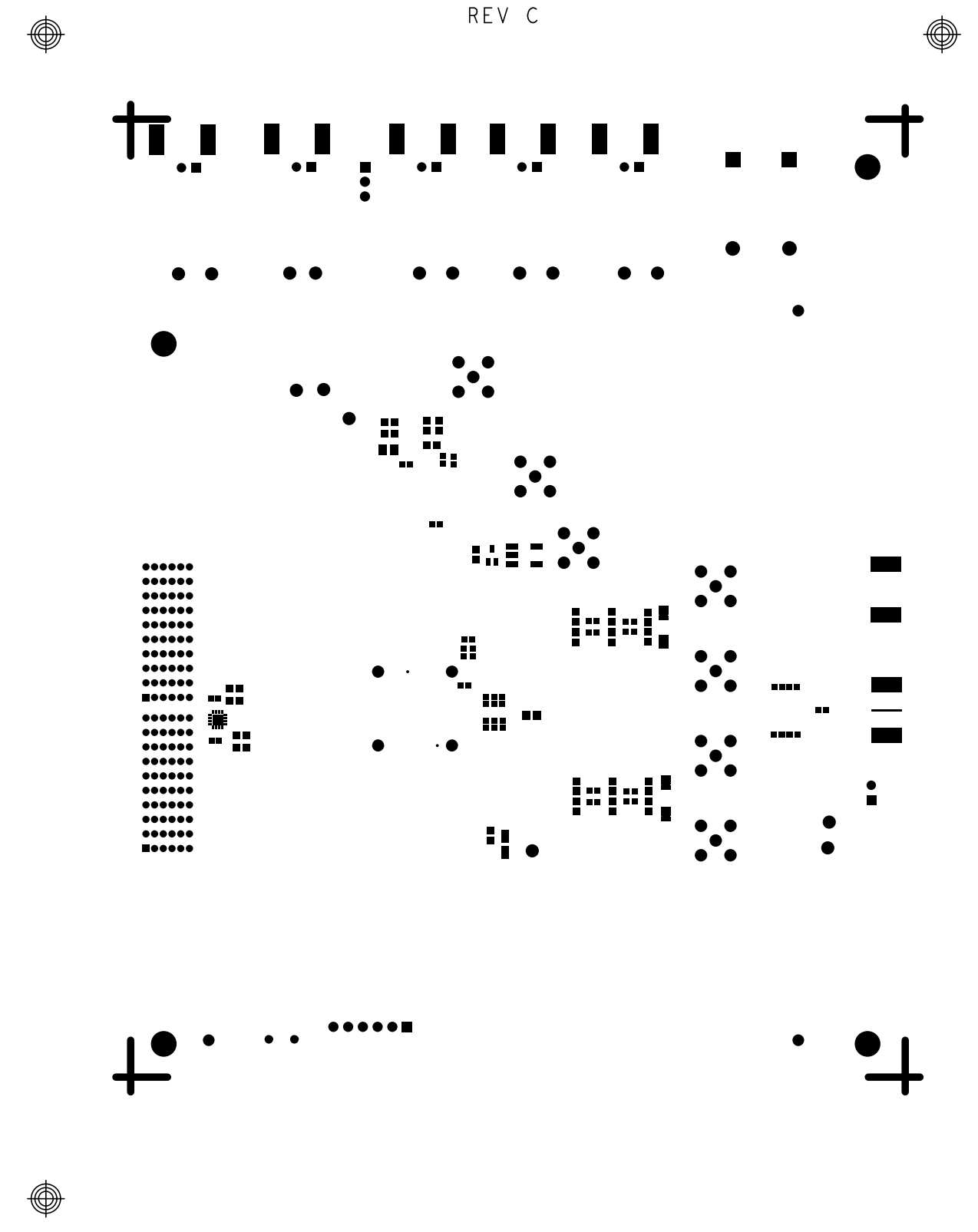
L10 SECONDARY  
08-013033-02  
REV C



SOLDERMASK PRIMARY  
08-013033-03  
REV C

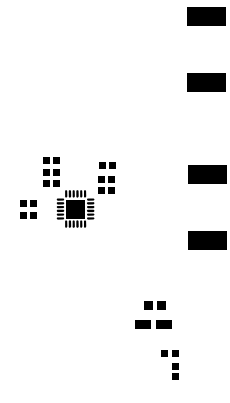
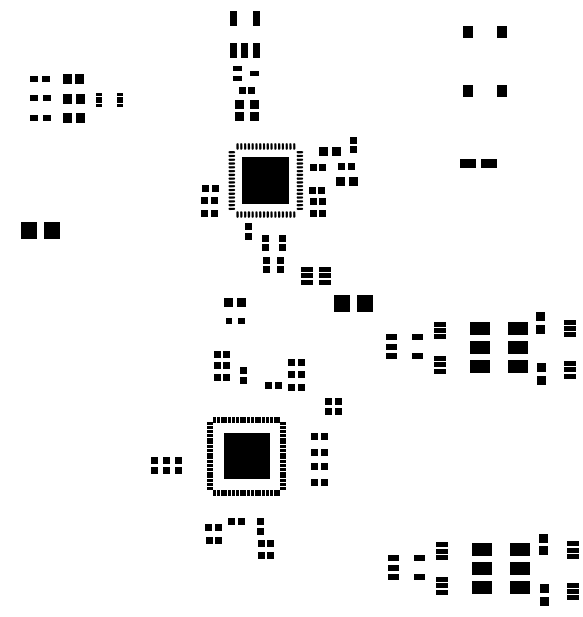
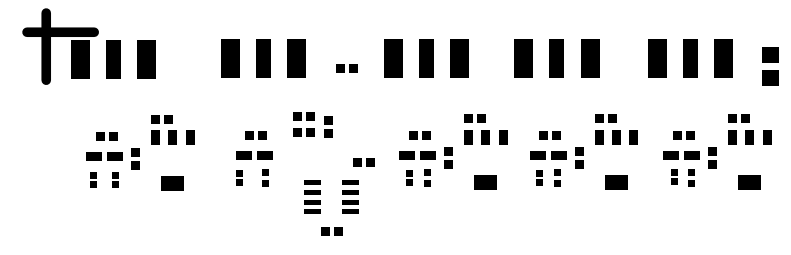


SOLDERMASK SECONDARY  
08-013033-05  
REV C

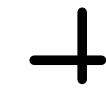
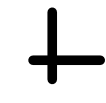
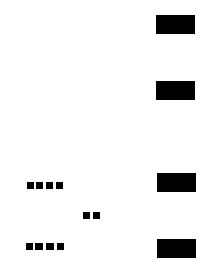
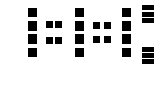
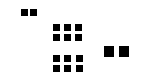
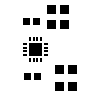
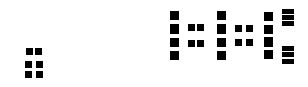
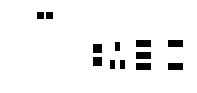
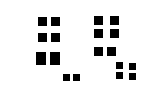




PASTEMASK PRIMARY  
08-013033-15  
REV C



PASTEMASK SECONDARY  
08-013033-16  
REV C



SILKSCREEN PRIMARY  
08-013033-04  
REV C

