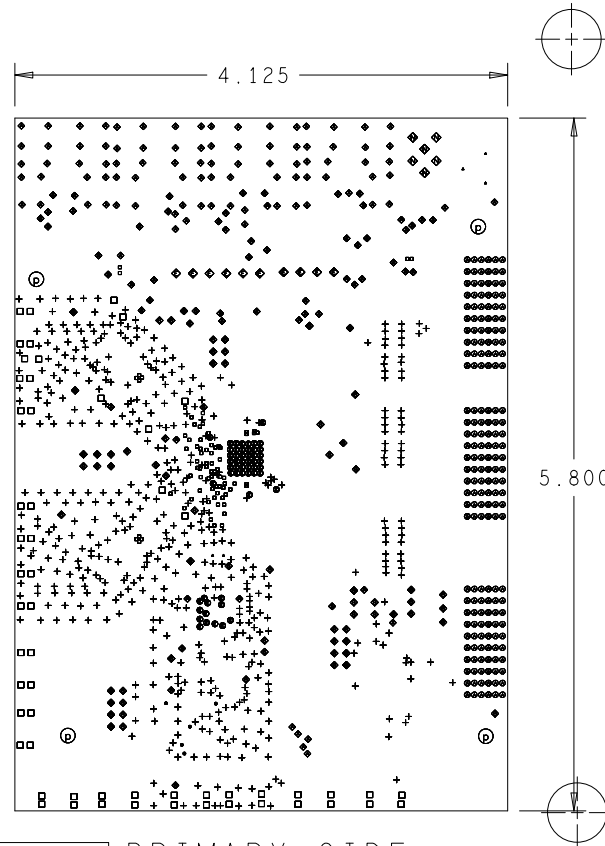


6 LAYER STACKUP

	PRIMARY SILKSCREEN (ST9640CE01C)
	PRIMARY SOLDER MASK (MT9640CE01C)
	PRIMARY SIDE (TL9640CE01C - L1)
NOMINAL	.006" RETURN PLANE (AP9640CE01C - L2)
FINISHED BOARD THICKNESS	.004" POWER PLANE (BP9640CE01C - L3)
0.062"	.004" POWER PLANE (CP9640CE01C - L4)
+/- .007	.004" RETURN PLANE (DP9640CE01C - L5)
	.006" SECONDARY SIDE (BL9640CE01C - L6)
	SECONDARY SOLDER MASK (MB9640CE01C)
	SECONDARY SILKSCREEN (SB9640CE01C)

CHARACTERISTIC IMPEDANCE = 50 OHMS +/- 10%  
ARTWORK LINE WIDTH FOR IMPEDANCE CONTROLLED LINES = 0.008"



PRIMARY SIDE

FINISHED HOLES IN MILS				
ALL UNITS ARE IN MILS				
FIGURE	SIZE	PLATED	QTY	TOLERANCE/NOTES
•	8.0	PLATED	77	
+	12.0	PLATED	501	
•	13.0	PLATED	54	
•	20.0	PLATED	152	
•	25.0	PLATED	180	
□	28.0	PLATED	57	
•	31.0	PLATED	5	
•	37.4	PLATED	2	
•	40.0	PLATED	68	
•	50.0	PLATED	6	
•	55.0	PLATED	10	
•	130.0	PLATED	3	
□	160.0	NON-PLATED	4	

REVISIONS			
REV	DESCRIPTION	DATE	APPROVED
A	INITIAL RELEASE		

- NOTES:
- MATERIALS; MANUFACTURING TO MEET EU ROHS DIRECTIVE, ALL MATERIALS. INCLUDING SOLDERMASK - REFER TO EU ROHS DIRECTIVE 20002/95/ECIALS. IS410. IN ACCORDANCE WITH IPC-L-130 (LATEST REV.). GLASS FABRIC BASE, EPOXY RESIN, FIRE RESISTANT.
  - BONDING AGENT; PREIMPREGNATED B STAGE EPOXY GLASS CLOTH IN ACCORDANCE WITH IPC-L-109 (LATEST REV.).
  - CLADDING; EXTERNAL LAYERS 1/2 OZ. COPPER, OVERPLATE TO 1 1/2 OZ. INTERNAL SIGNAL LAYERS 1 OZ. COPPER. INTERNAL PLANE LAYERS 1 OZ. COPPER.
  - FINISH; GOLD IMMERSION
  - SOLDER MASK; SHALL BE LIQUID PHOTOIMAGABLE (LPI) APPLIED ON BOTH SIDES OVER BARE COPPER AND SHALL MEET IPC-SM-840 (LATEST REV.) CLASS 3.
  - SILK SCREEN; SHALL BE PERMANENT NON-CONDUCTIVE EPOXY INK, COLOR WHITE.
  - U.L. RATING; 94VO MINIMUM.
- FABRICATION:
- REFER TO IPC-4101B/99 SERIES (LATEST REV.), CLASS 2 FOR FABRICATION UNLESS OTHERWISE SPECIFIED.
  - UNDIMENSIONED HOLES TO BE LOCATED WITHIN +/- .005 OF THEIR TRUE POSITION WITH RESPECT TO ARTWORK.
  - PLATED HOLE WALL THICKNESS SHALL NOT BE LESS THAN .001 INCH MINIMUM AVERAGE, WITH NO READING LESS THAN .0008 BY CROSS SECTION.
  - HOLE DIAMETERS APPLY AFTER PLATING.
  - FINISHED CONDUCTOR WIDTHS SHALL NOT BE REDUCED FROM THE NOMINAL, INDICATED ON THE MASTER PATTERN, BY MORE THAN THE CONDUCTOR THICKNESS.
  - MINIMUM DESIGN LINE WIDTH IS .005 INCH.
  - MINIMUM DESIGN SPACING IS .005 INCH.
  - BOARD/PANEL MUST MEET IPC-A-600 (LATEST REV.) CLASS 2 FOR FLATNESS.
  - MFGR. TO LEGIBLY ETCH OR STAMP/SCREEN WITH PERMANENT NON-CONDUCTIVE INK ON SECONDARY SIDE IN A CLEAR AREA UNLESS OTHERWISE INDICATED;
    - A. U.L. CODE
    - B. DATE CODE (STAMP)
    - C. FLAMMABILITY RATING
    - D. MFGR. LOGO
    - E. SUCCESSFUL ELECTRICAL BOARD TEST.
  - NON-FUNCTIONAL PADS MAY BE REMOVED FROM INNER SIGNAL LAYERS AT MFGR. DISCRETION.
  - IF PAD SIZES PROVIDED ARE NOT LARGE ENOUGH TO MAINTAIN ANNULAR RING REQUIREMENT, MFGR. MAY TEAR DROP PADS TO MAINTAIN ANNULAR RING AT PAD TO CIRCUIT INTERFACE ONLY AND MUST INSURE ELECTRICAL INTEGRITY. REPAIRS PER IPC-R-700 ARE ALLOWED.
  - MODIFICATIONS TO THE ARTWORK, OTHER THAN THOSE DESCRIBED ON THE FABRICATION DRAWING, ARE NOT ALLOWED WITHOUT WRITTEN AUTHORIZATION.
  - FILL ALL .013" VIAS WITH NON-CONDUCTIVE EPOXY.
  - FIDUCIALS; TOP & BOTTOM (-1700, -2600) (2000 2000) (2000 -2800)

UNLESS OTHERWISE SPECIFIED DIMENSIONS ARE IN INCHES TOLERANCES DECIMALS FRACTIONS ANGLES .XX -.010 --1/32 +/- 2 .XXX -.005	NCDRILL		ANALOG DEVICES		HSC DIVISION 7910 TRIAD CENTER DRIVE GREENSBORO, NC 27409	
	APPROVAL	DATE	TITLE			
MATERIAL	DESIGNED BY	03/07/07	AD9640 CUST. EVAL.PCB			
FINISH	CHECKED		SIZE	FSCM NO	DRAWING NUMBER	REV
DO NOT SCALE DWG	APPROVED		C		9640CE01	C
	MFG ENGINEER		SCALE	1/1		SHEET 1 OF 1