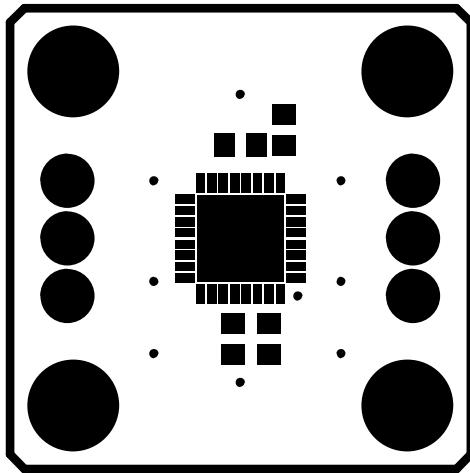


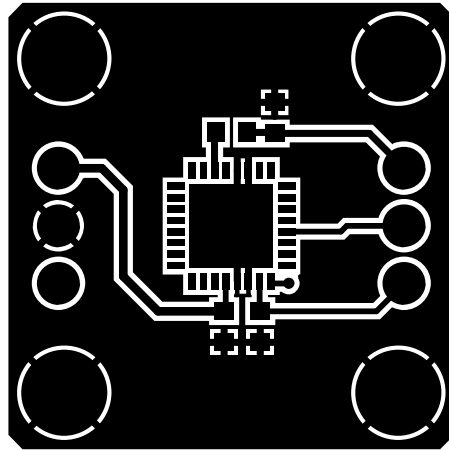
Primary (Top) Silkscreen

301-824.pss



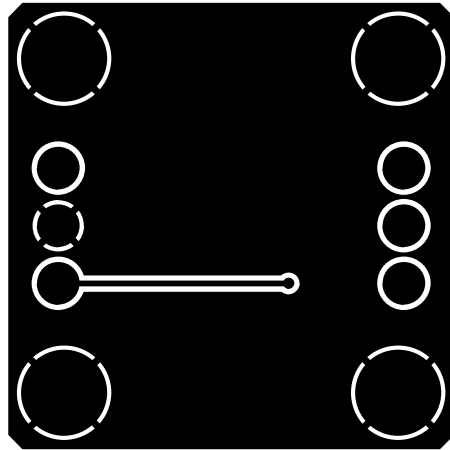
Primary (Top) Soldermask

301 - 824 . p s m



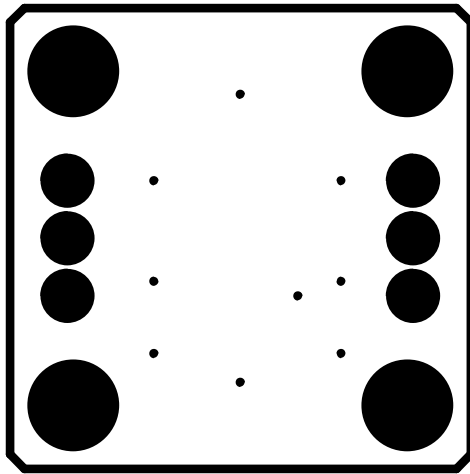
First (Top) Copper Layer

301 - 824 . | y 1



Second (Bottom) Copper Layer

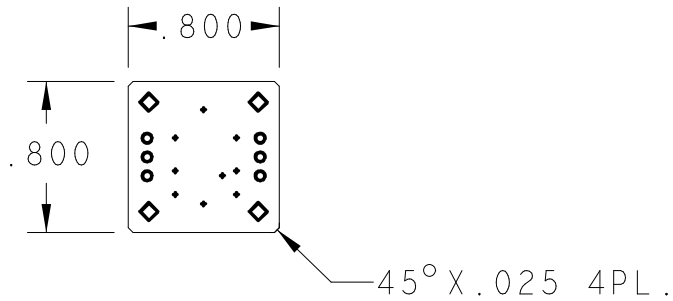
301 - 824 . | y 2



Secondary (Bottom) Soldermask

301 - 824 . s s m

PRIMARY SIDE VIEW



301-824.fab

NOTES:

1. PCB SPEC: PCB SHALL BE MANUFACTURED TO MEET ALL SPECIFICATIONS AND REQUIREMENTS OF IPC-6011 AND IPC-6012, CLASS 2 EXCEPT AS NOTED.
2. MATERIAL: EPOXY GLASS, TYPE FR4, 0.062" THICK, 1 OZ CU PLATE BOTH SIDES, DK 4.3-4.5
3. SOLDER MASK: COLOR GREEN, PHOTOIMAGEABLE TYPE PER IPC SM-840, TYPE B, CLASS 2. APPLY IMMERSION GOLD (NIG) OR SILVER, WHITE TIN IS ACCEPTABLE.
4. FINISH: APPLY WHITE EPOXY INK TO COMPONENT SIDE OF PCB. ADD VENDOR ID AND DATE CODE TO SILKSCREEN TOP.
5. SILKSCREEN: HOLES SIZES IN DRILL LEGEND REPRESENT FINISHED SIZE AFTER PLATING. MIN THICKNESS TO BE 0.0015".
6. DRILL SIZES: ON FINISHED PCB'S, COPPER ETCH IS TO BE WITHIN +/- 0.0005" OF PHOTOTOOL DATA.
7. PHOTOTOOLS:

DRILL CHART: LY1 to LY2			
ALL UNITS ARE IN MILS			
SYMBOL	SIZE	FINISH	QTY
◆	10.0	PLATED	9
●	43.0	PLATED	6
◇	120.0	PLATED	4

					NAME ADXL1002Z Evaluation Board Rev 2												
					DWN/DESS GL		DATE 2016-10-17		CHK/VER DR		DATE 2016-10-17		APPD/APP DR		DATE 2016-10-17		
					A		CODE 301-824										
					SCALE/ECHELLE 1:1			INTEMPCO CONTROLS LTD LES CONTROLES INTEMPCO LTEE				SHEET FEUILLE		1 1		OF DE	
LTR/LET	REVISION		DATE	DWN/DESS	CHK/VER												

CE DESSIN ET SES SPECIFICATIONS SONT LA PROPRIETE DE LES CONTROLES INTEMPCO LTEE. IL NE PEUVENT ETRE PRETES, TRANSFERES, REPRODUITS, COPIES OU SERVIR A LA FABRICATION, L'ACHAT OU LA VENTE D'ARTICLES SANS LE CONSENTEMENT ECRIT DE LES CONTROLES INTEMPCO LTEE.
 THIS DRAWING AND SPECIFICATIONS HEREIN ARE THE PROPERTY OF INTEMPCO CONTROLS LTD AND MUST NOT BE LOANED OR OTHERWISE TRANSFERRED TO ANY THIRD PARTY OR REPRODUCED, COPIED OR USED IN CONNECTION WITH THE MANUFACTURE PURCHASE OR SALE OF ITEMS WITHOUT WRITTEN CONSENT OF INTEMPCO CONTROLS LTD.