

8

7

6

5

4

3

2

1

THIS DRAWING IS THE PROPERTY OF ANALOG DEVICES INC. IT IS NOT TO BE REPRODUCED OR COPIED, IN WHOLE OR IN PART, OR USED IN FURNISHING INFORMATION TO OTHERS, OR FOR ANY OTHER PURPOSE DETRIMENTAL TO THE INTERESTS OF ANALOG DEVICES. THE EQUIPMENT SHOWN HEREON MAY BE PROTECTED BY PATENTS OWNED OR CONTROLLED BY ANALOG DEVICES.

JUMPER TABLE

JP#	ON	OFF
1		
2		
3		
4		
5		

\* SEE ASSEMBLY INSTRUCTIONS

REVISIONS

REV	DESCRIPTION	DATE	APPROVED
A	RELEASED	FEB2015	P.H.
B	MINOR CHANGES	JULY2015	P.H.

RELAY CONTROL CHART

CONTROL	CODE	DEVICE	FUNCTION	CONNECTOR

# AD9864-74 CUSTOMER EVAL BOARD

OCTOBER 23 2015

A


TEMPLATE ENGINEER P. ALONGI -	DATE	<b>SCHEMATIC</b>			
HARDWARE SERVICES -					
HARDWARE SYSTEMS -					
TEST ENGINEER -					
COMPONENT ENGINEER -					
TEST PROCESS -					
HARDWARE RELEASE -					
DESIGNER -		MASTER PROJECT TEMPLATE -	TESTER TEMPLATE -	DRAWING NO. HSC 15006	REV. B
PTD ENGINEER A. DELMURO		UNLESS OTHERWISE SPECIFIED DIMENSIONS ARE IN INCHES			
CHECKER -		TOLERANCES			
		DECIMALS X.XX +0.010 X.XXX +0.005	FRACTIONS +1/32	ANGLES +2	
		SIZE <b>D</b>	SCALE NONE	CODE ID NO. -	SHEET 1 OF 7

P.O SPEC.	BK/BD SPEC.	SOCKET OEM	OEM PART#	HANDLER
-----------	-------------	------------	-----------	---------

8

7

6

5

4

3

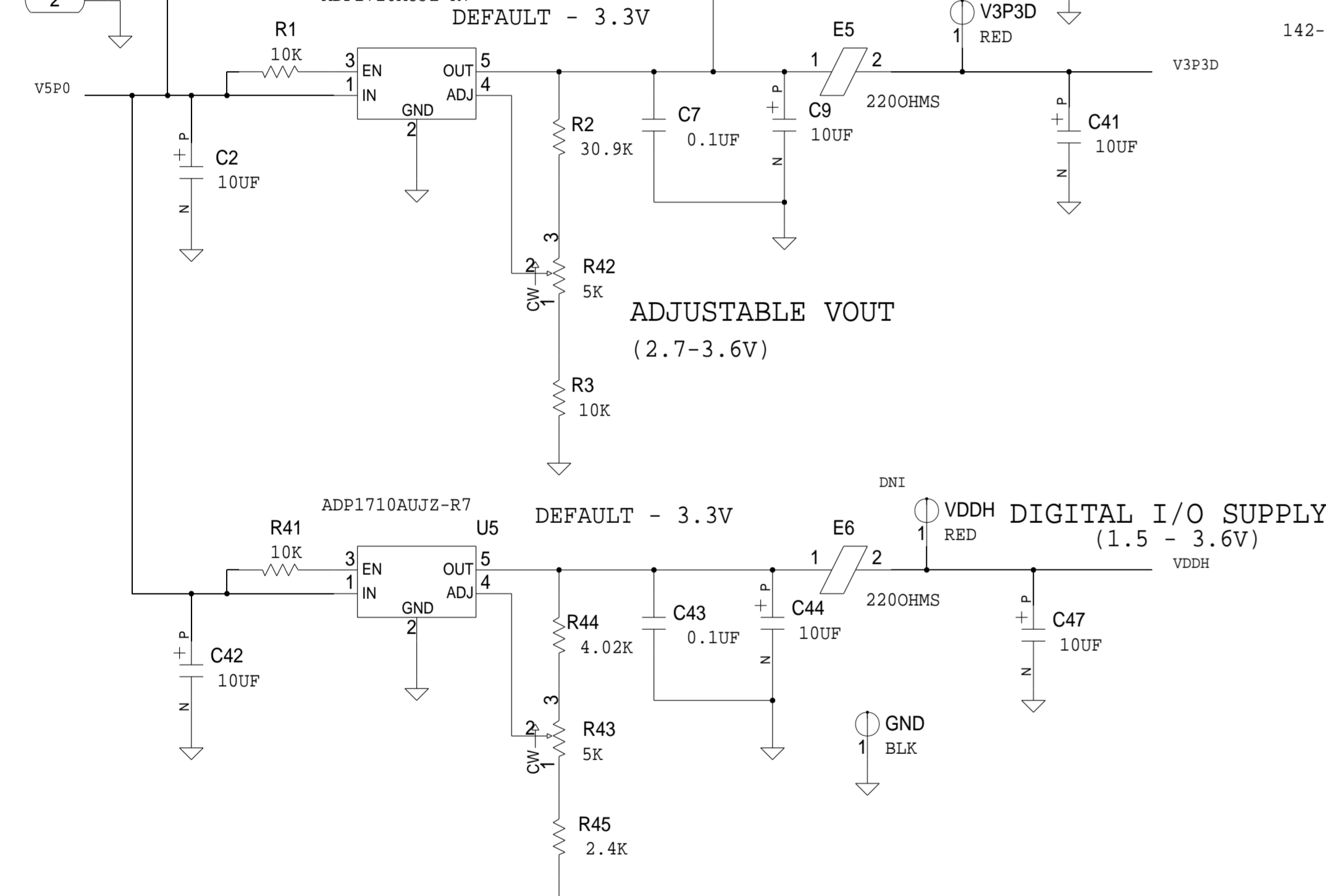
2

1

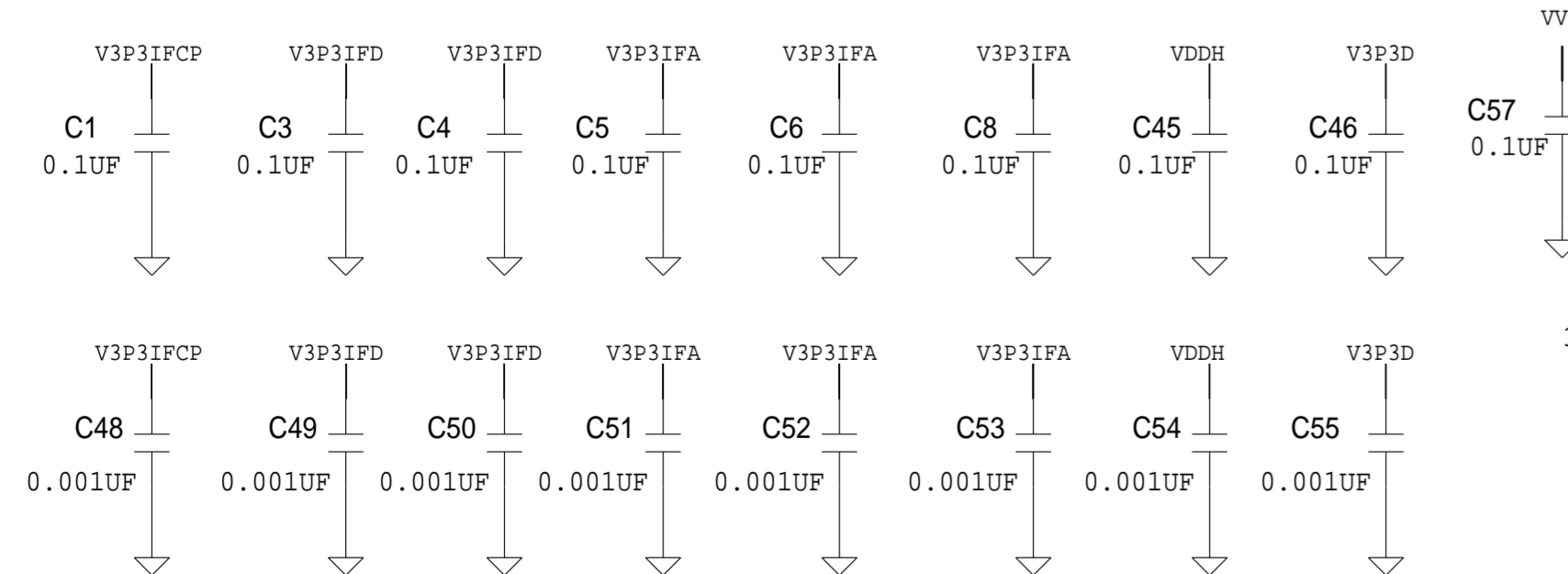
REVISIONS			
REV	DESCRIPTION	DATE	APPROVED

PLACE SUPPLY COMPONENT  
ON BACK SIDE OF PCB  
EXCEPT R42,R43,AND DS1

P3  
25.161.0253



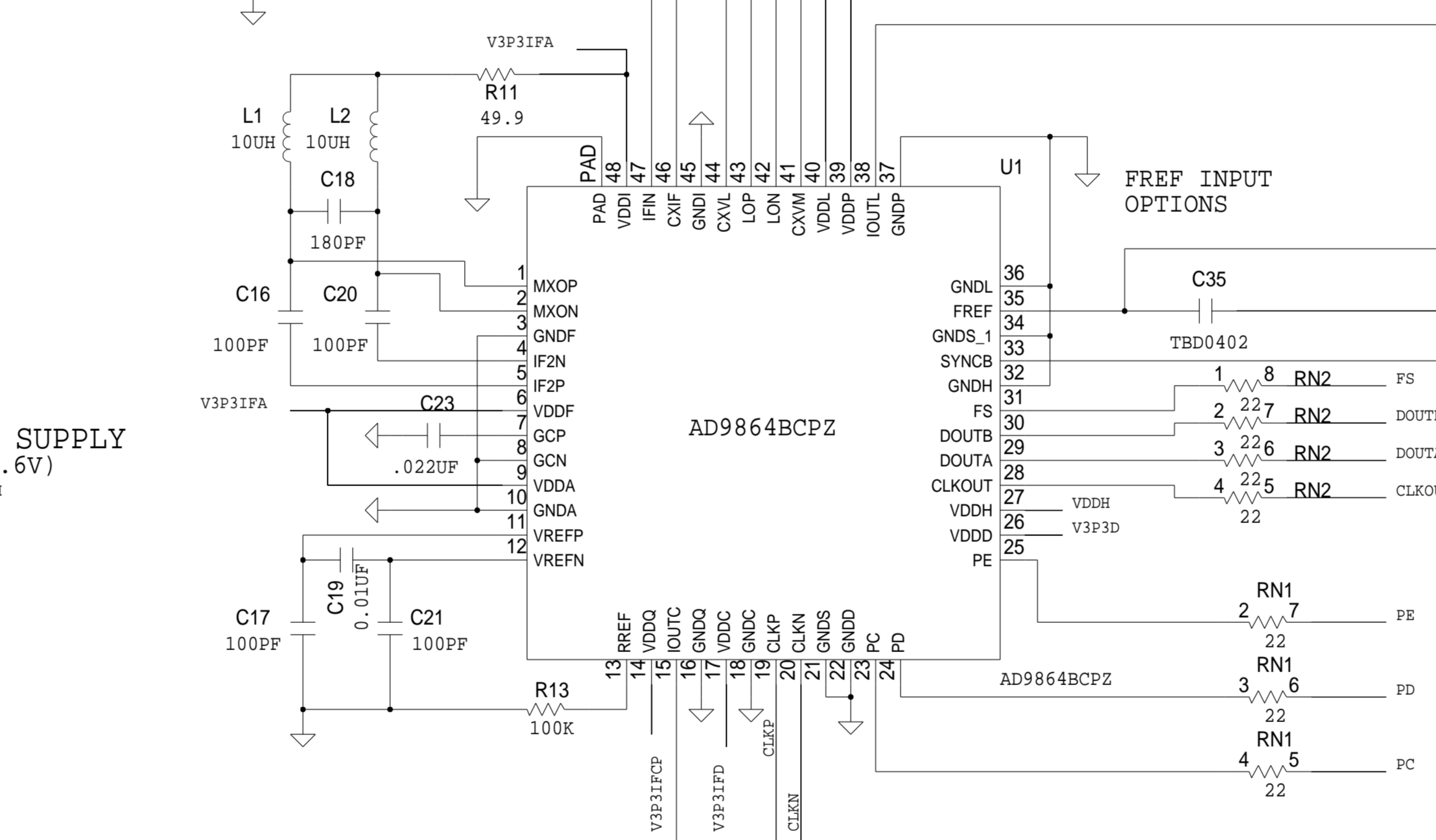
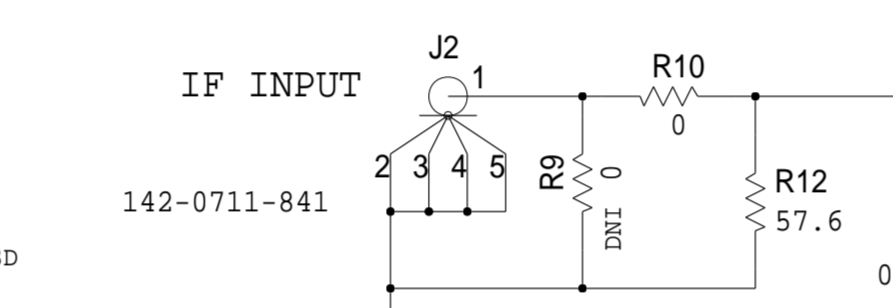
AD9874/64 LOCAL SUPPLY BYPASS CAPACITORS



FOR EXTERNAL LO  
REMOVE R19,R20 AND INSTALL R14 AND R16

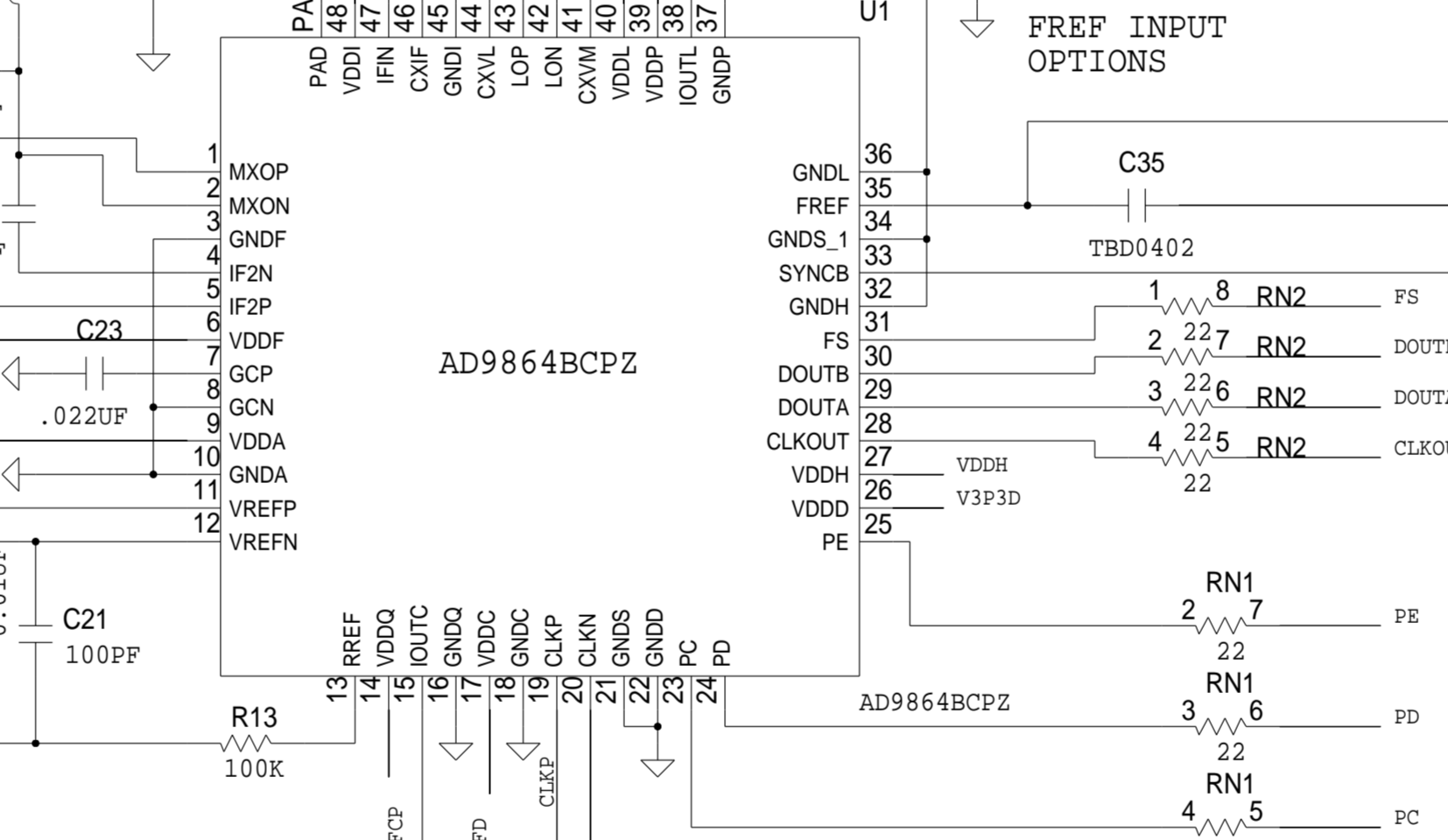
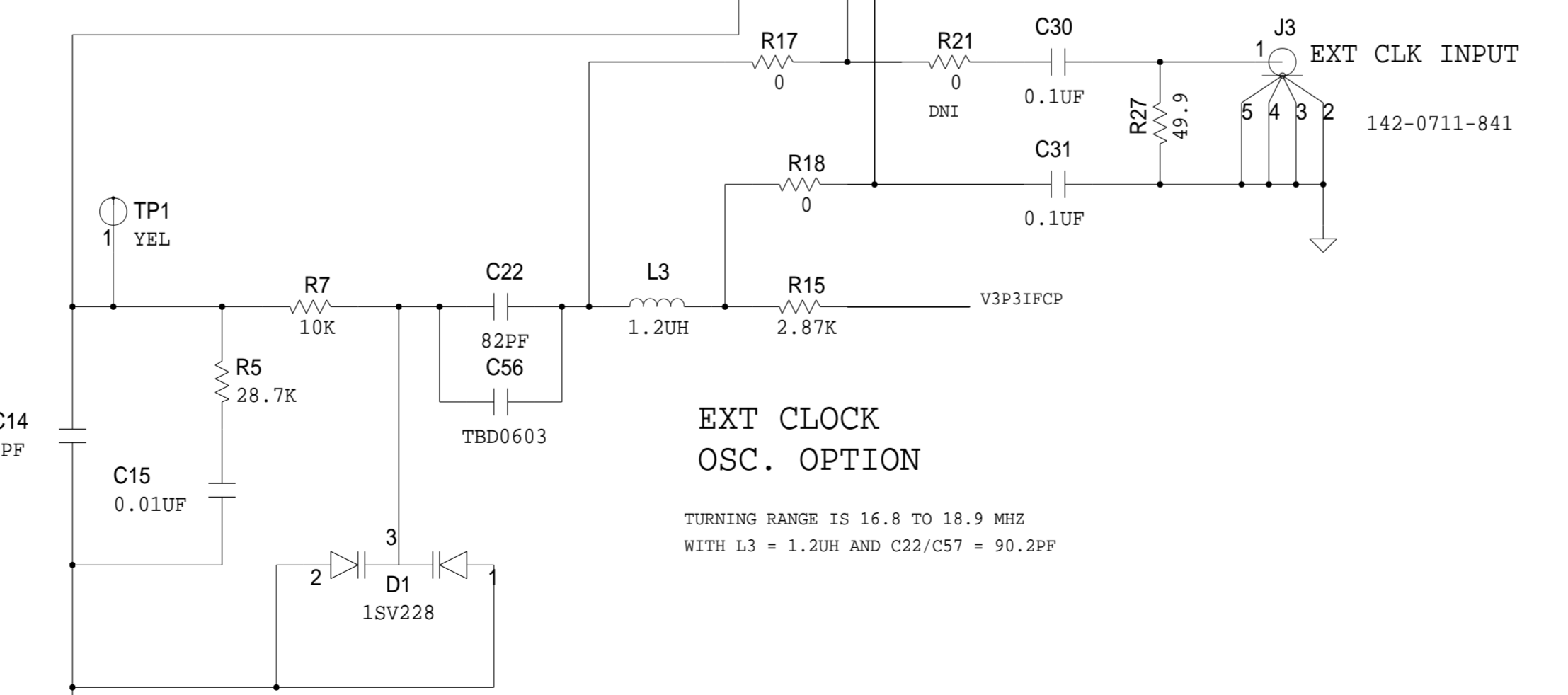
EXT VCO/LO  
OPTIONS

50 OHMS OR MATCHING NETWORK



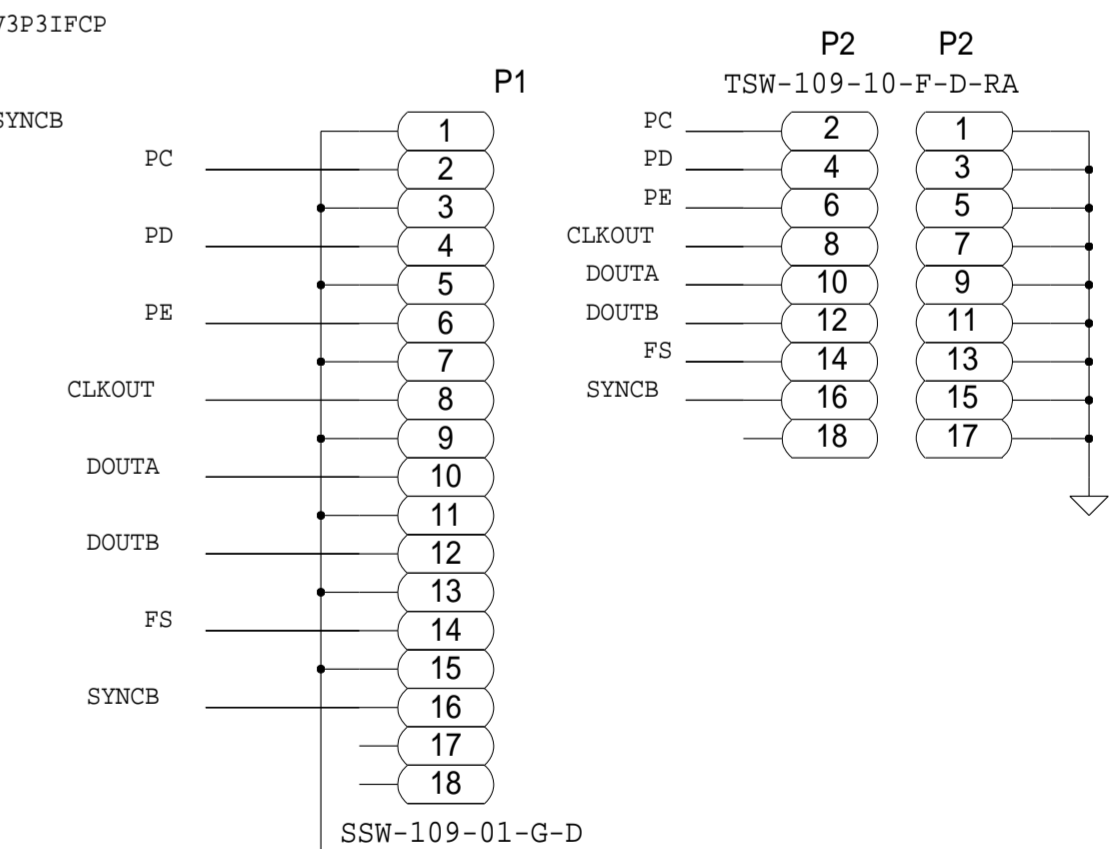
EXT CLOCK  
OSC. OPTION

TURNING RANGE IS 16.8 TO 18.9 MHZ  
WITH L3 = 1.2UH AND C22/C57 = 90.2PF

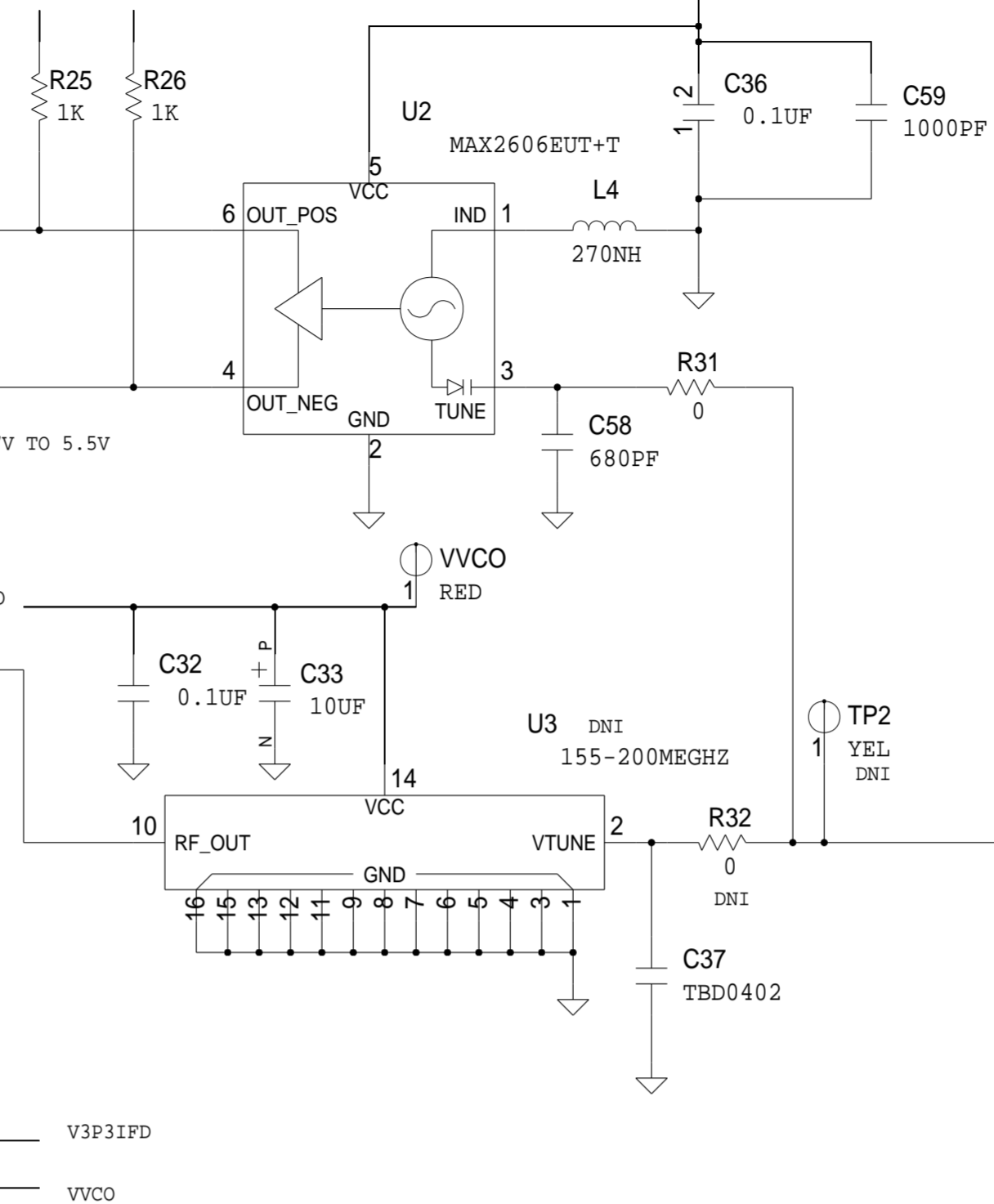


SCHEMATIC			
AD9864-74 EVAL BRD			
DESIGN VIEW <DESIGN_VIEW>	DRAWING NO. HSC 15006	REV B	
PTD ENGINEER <PTD_ENGINEER>	SCALE <SCALE>	SHEET 2 OF 2	

PLACE P1 ON BOTTOM OF PCB



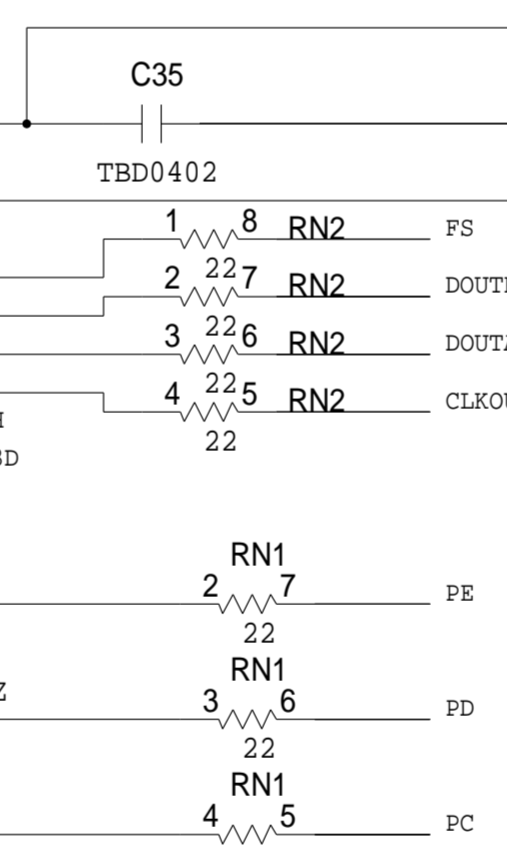
MAX2606 VCO TUNING RANGE  
L4 = 270NH FOUT = 96 TO 120 MHZ  
L4 = 330NH FOUT = 86 TO 106 MHZ



SYNCB  
INPUT OPTIONS



FREF  
INPUT OPTIONS



FREF OR SYNCB

