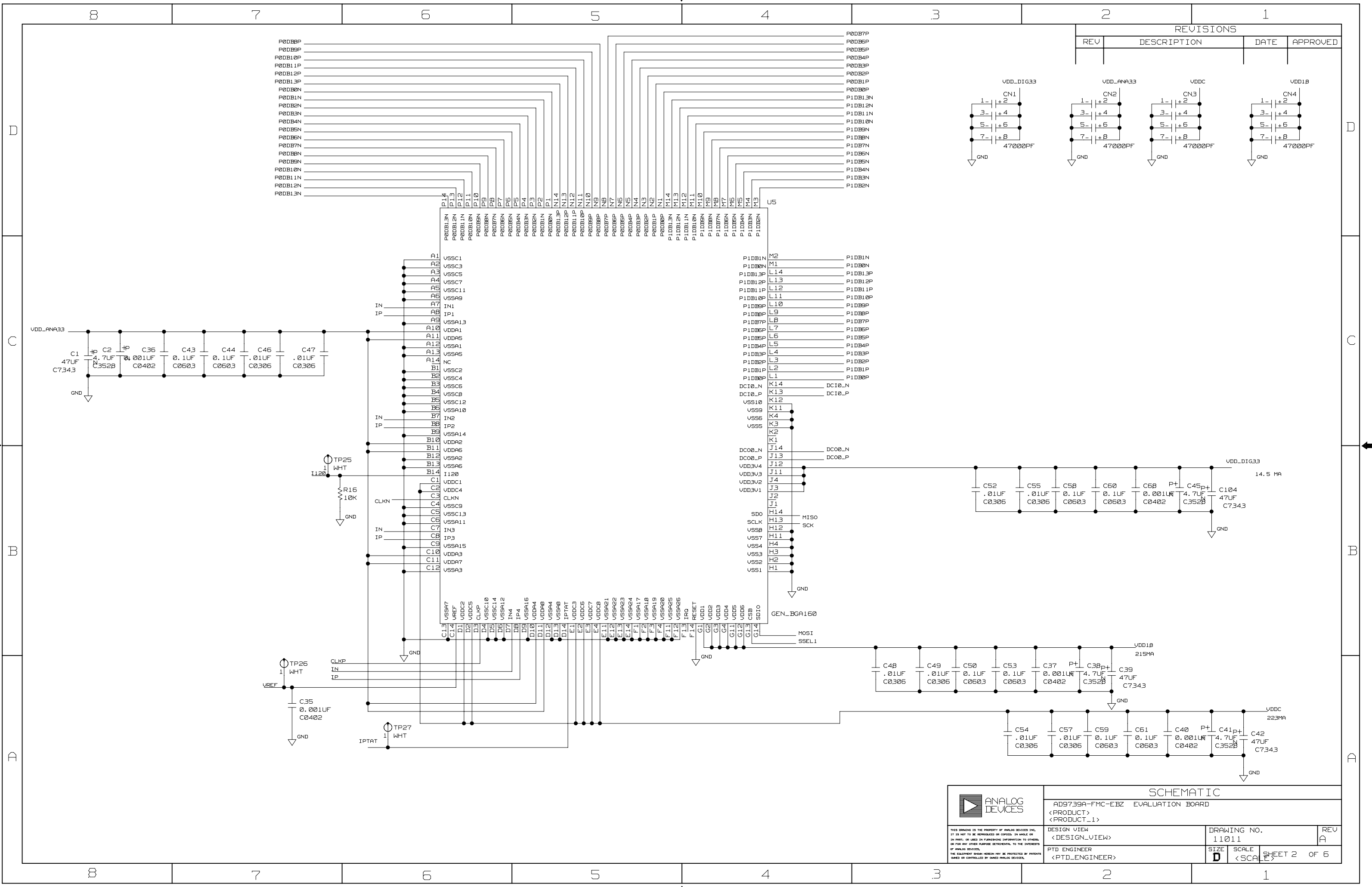
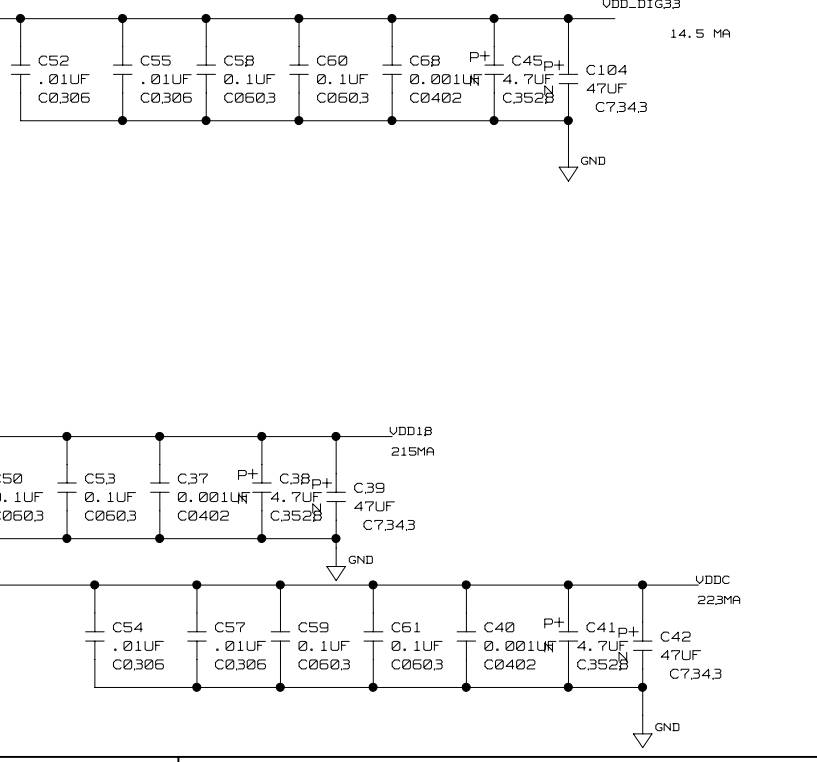
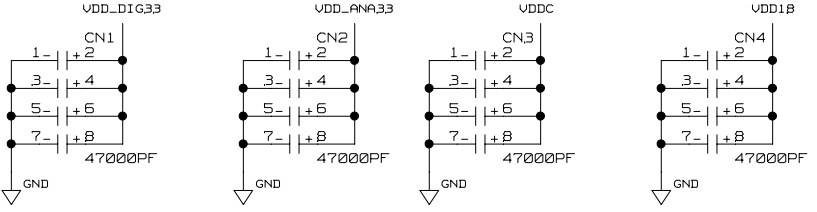
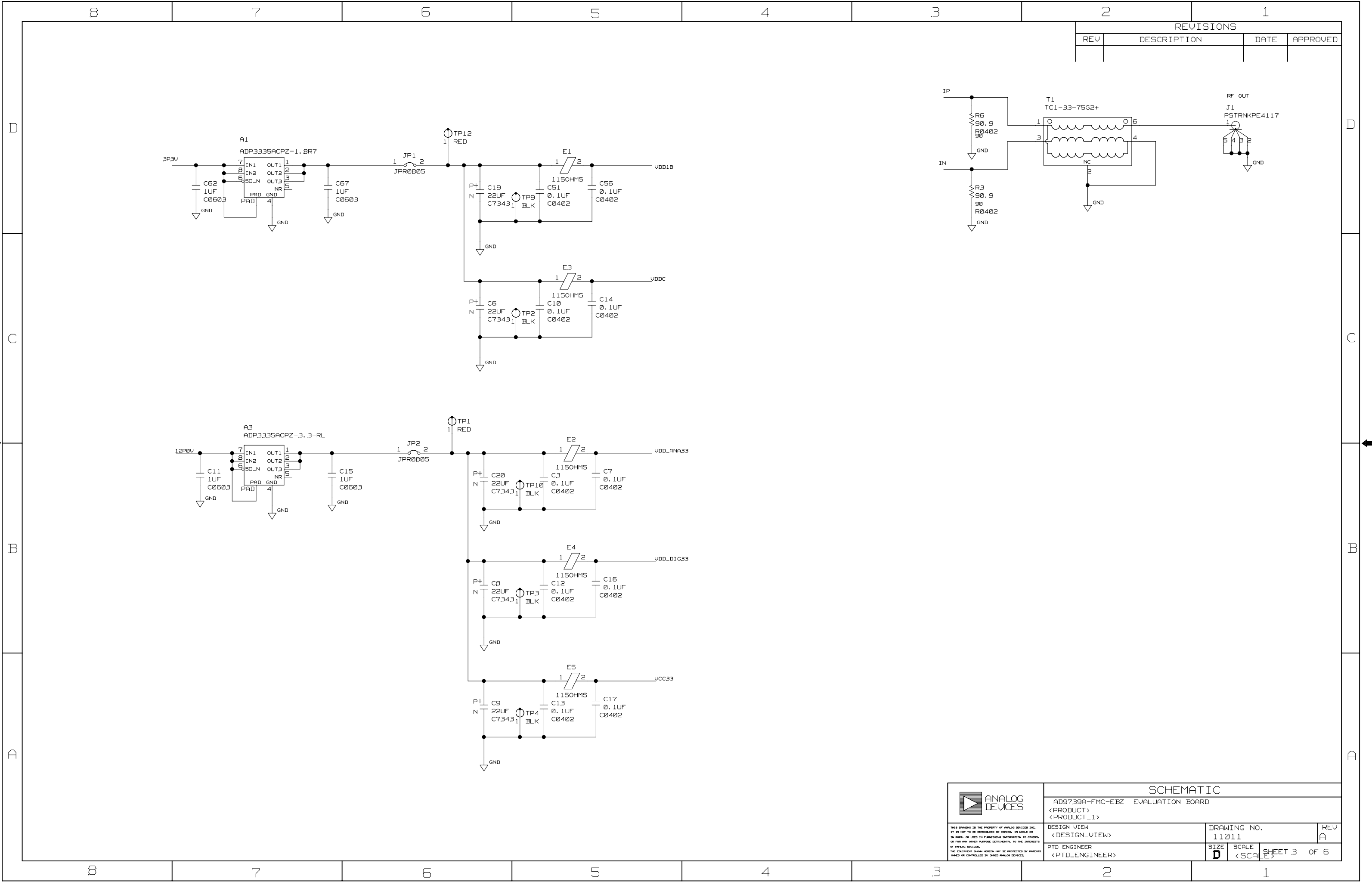


[illegible]



REVISIONS			
REV	DESCRIPTION	DATE	APPROVED



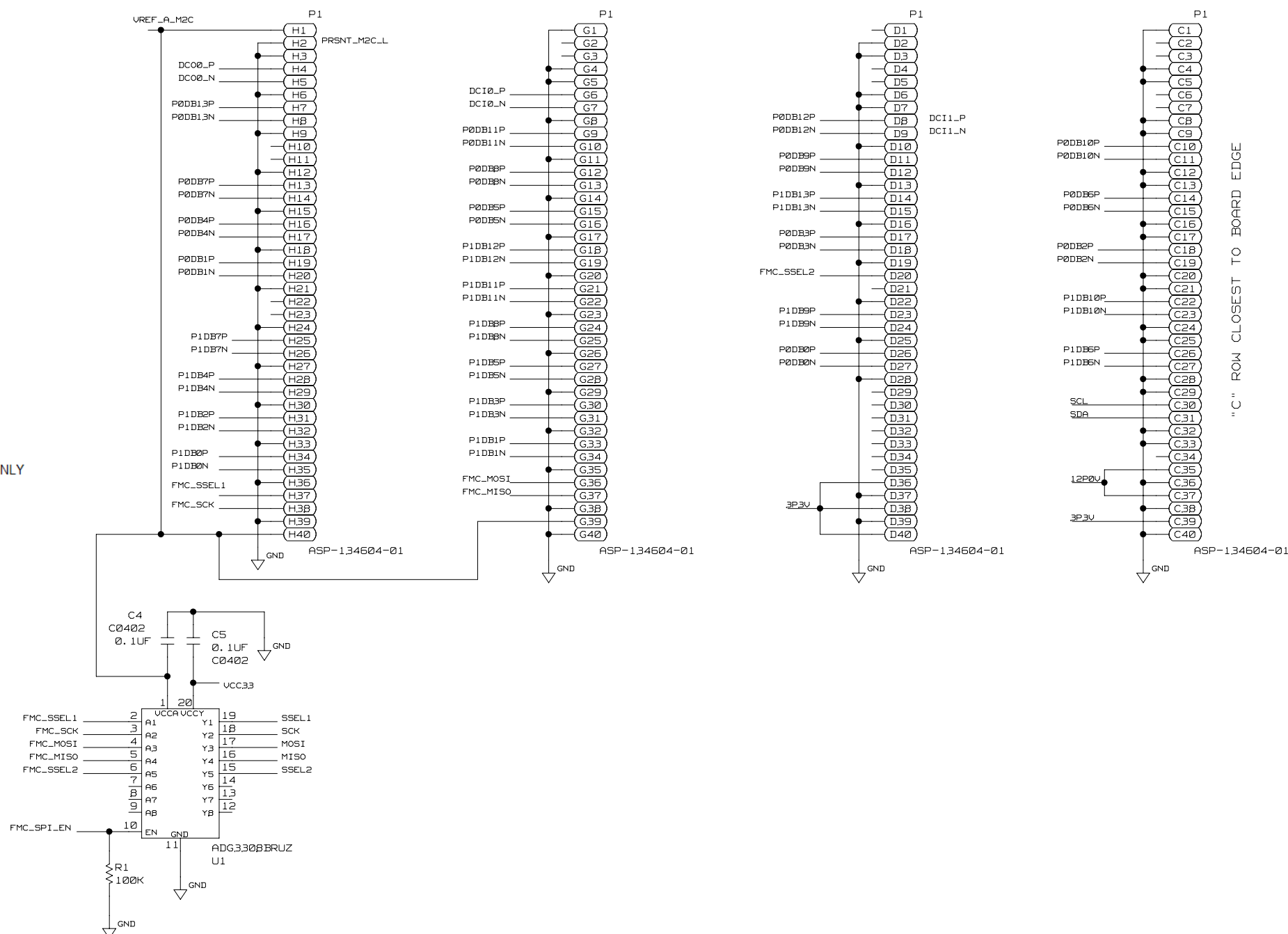
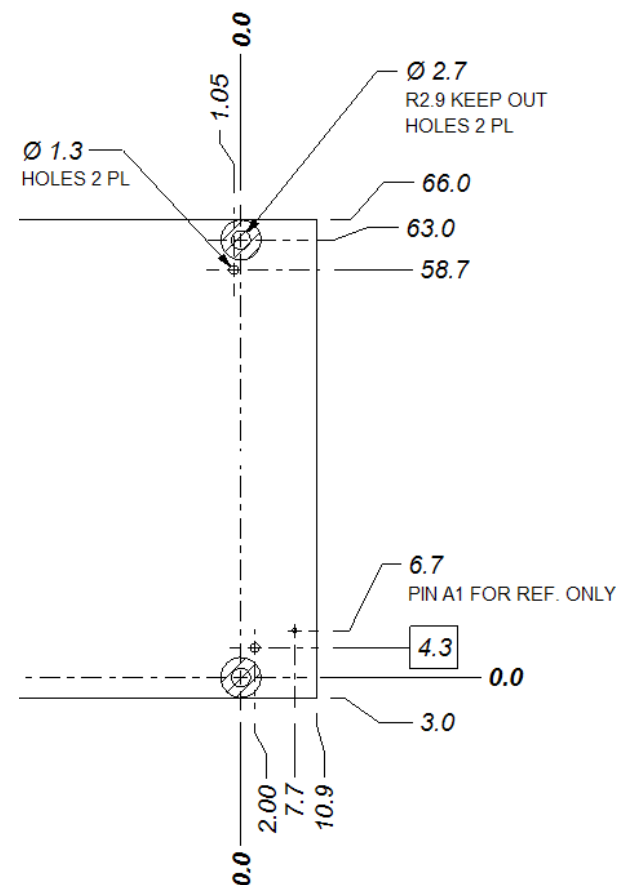


LAYOUT NOTES:

ALL LINES MATCHED LENGTH (MATCHING MORE CRITICAL THAN LINE LENGTH)  
P0DBXX & PIDBXX & DCIO\_P/N

## PCB NOTES:

PCB DIMENSIONS AS FOLLOWS, PER VITA-57 SPEC:



"C" ROW CLOSEST TO BOARD EDGE



THIS DRAWING IS THE PROPERTY OF ANALOG DEVICES INC., IT IS NOT TO BE REPRODUCED OR COPIED, IN WHOLE OR IN PART, OR USED IN FURNISHING INFORMATION TO OTHERS OR FOR ANY OTHER PURPOSE DETRIMENTAL TO THE INTERESTS OF ANALOG DEVICES.

THE EQUIPMENT SHOWN HEREON MAY BE PROTECTED BY PATENT, ORIGINALLY OWNED OR CONTROLLED BY ANALOG DEVICES, INC.

SCHEMATIC

AD97.39A-FMC-EBZ EVALUATION BOARD

<PRODUCT>  
<PRODUCT\_1>

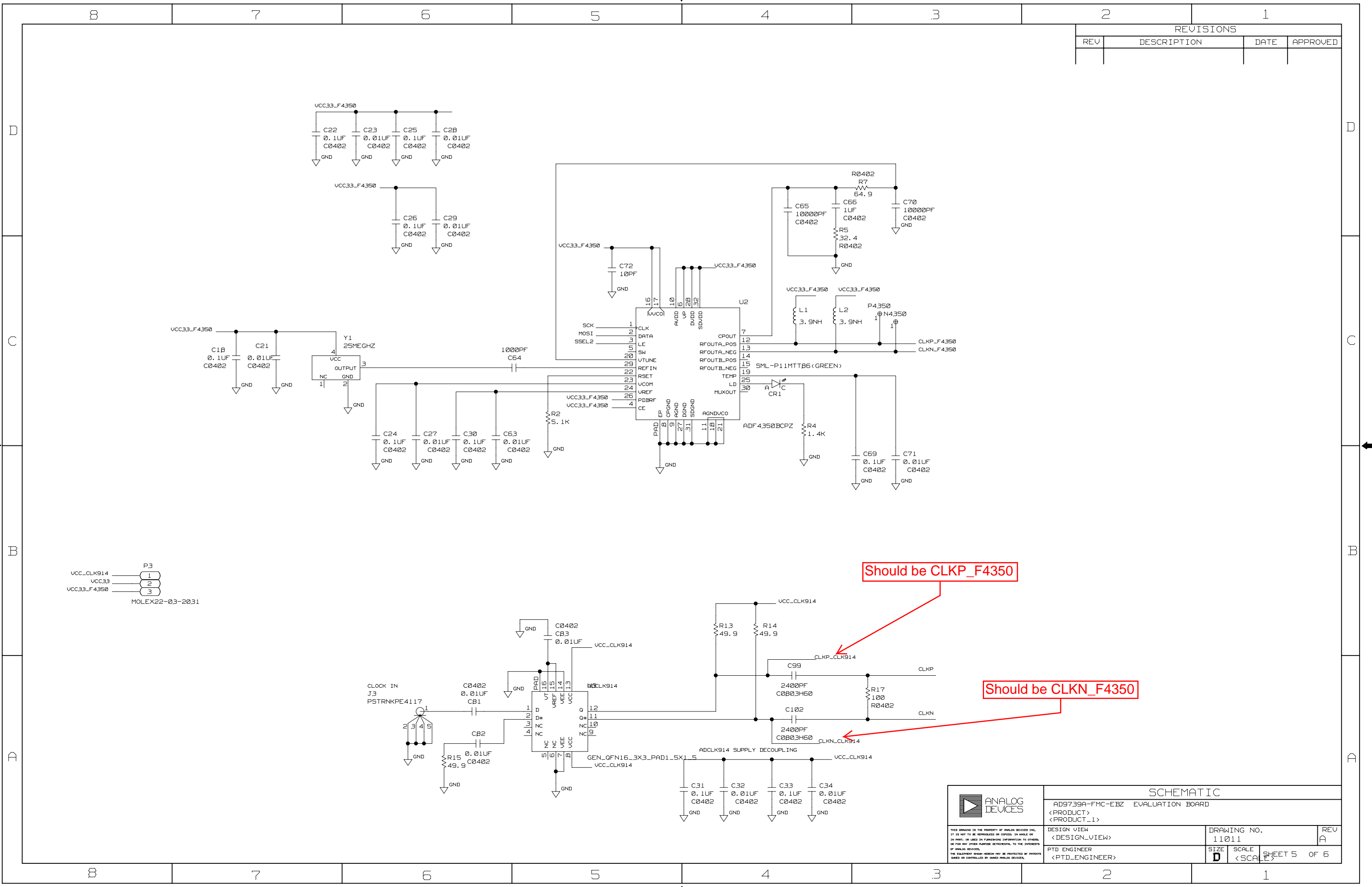
DESIGN VIEW
< DESIGN VIEW >

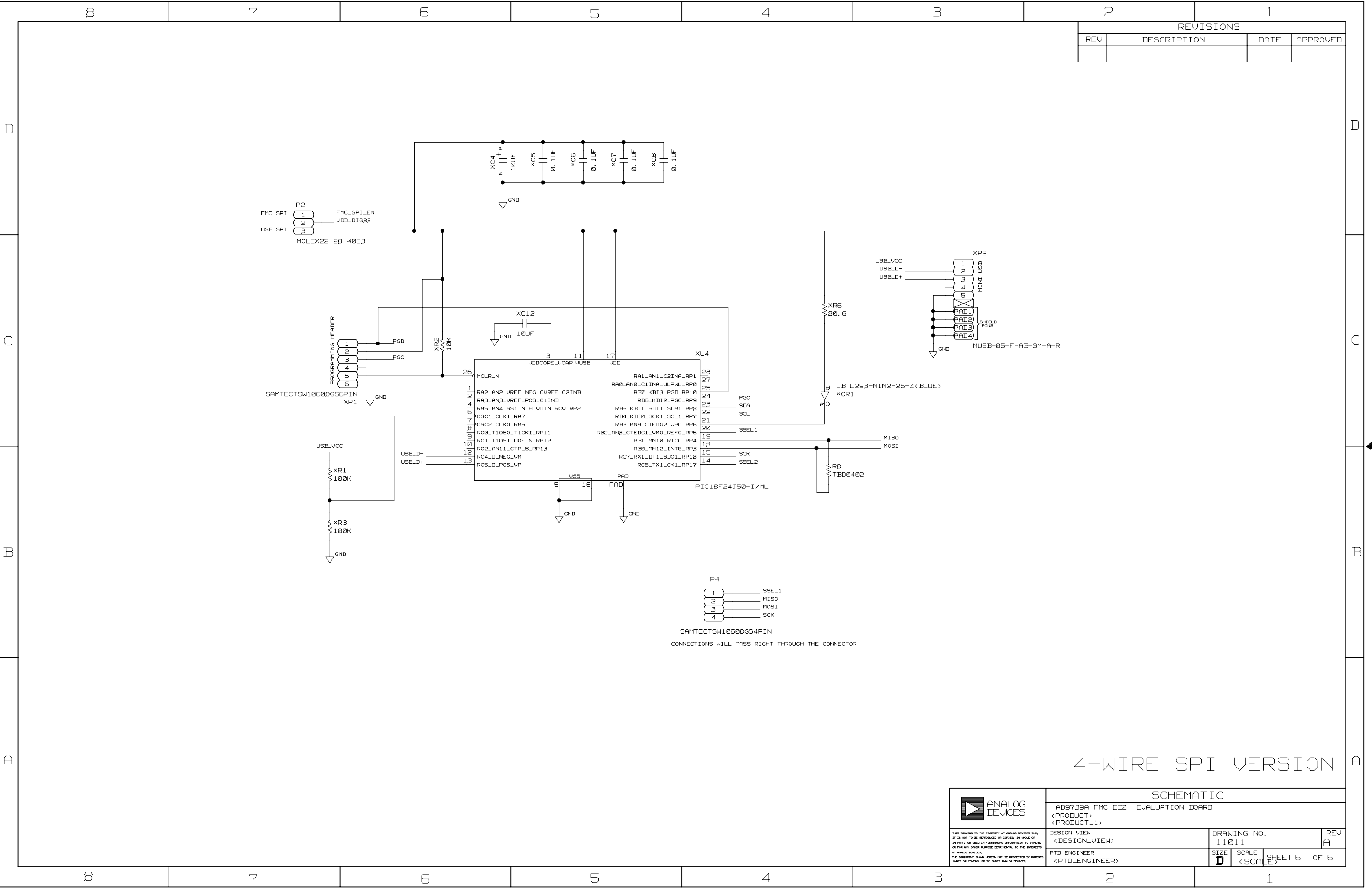
PTD ENGINEER
<PTD_ENGINEER>

DRAWING NO.	1.101.1
-------------	---------

SIZE	SCALE	SHEET 4 OF 6
D	<SCALE>	


REV
0





REVISIONS			
REV	DESCRIPTION	DATE	APPROVED

4-WIRE SPI VERSION

 ANALOG DEVICES <small>THIS DRAWING IS THE PROPERTY OF ANALOG DEVICES INC. IT IS NOT TO BE REPRODUCED OR COPIED, IN WHOLE OR IN PART, OR USED IN FURNISHING INFORMATION TO OTHERS, OR FOR ANY OTHER PURPOSE DETRIMENTAL TO THE INTERESTS OF ANALOG DEVICES. THE FOLLOWING INKMAN PERSON MAY BE PROTECTED BY PATENTS OWNED OR CONTROLLED BY ANALOG DEVICES.</small>	SCHEMATIC		
	AD9739A-FMC-EBZ EVALUATION BOARD		
	<PRODUCT> <PRODUCT_1>		
	DESIGN VIEW <DESIGN_VIEW>	DRAWING NO. 11011	REV A
PTD ENGINEER <PTD_ENGINEER>		SIZE D	SCALE <SCALE>
		SHEET 6	OF 6