



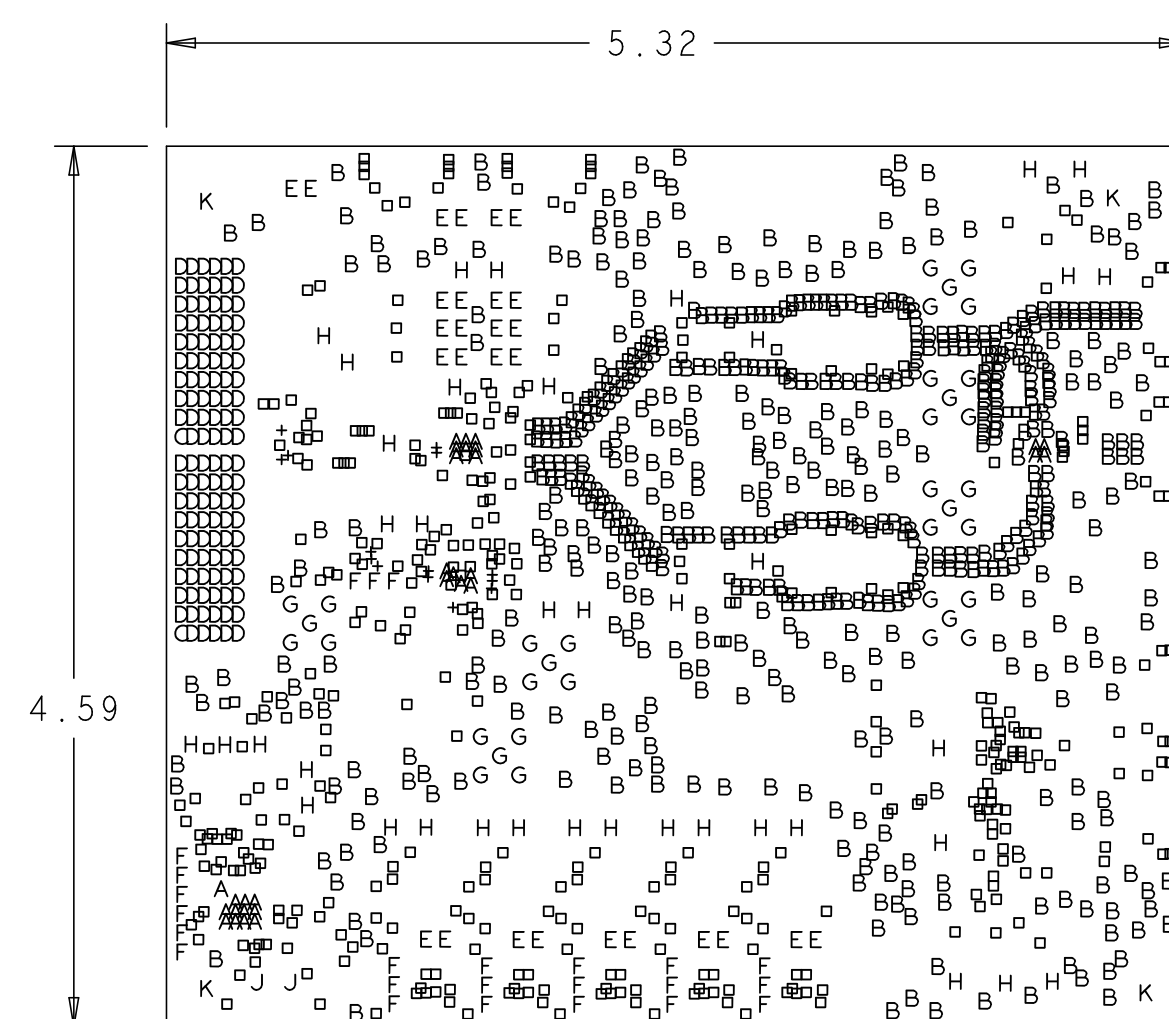
REVISIONS			
REV	DESCRIPTION	DATE	APPROVED
A	INITIAL RELEASE	29JUN09	N.E.

NOTES:

- MATERIALS; FR-4, IN ACCORDANCE WITH IPC-L-130 (LATEST REV.). GLASS FABRIC BASE, EPOXY RESIN, FIRE RESISTANT.
- BONDING AGENT; PREIMPREGNATED B STAGE EPOXY GLASS CLOTH IN ACCORDANCE WITH IPC-L-109 (LATEST REV.).
- CLADDING; EXTERNAL LAYERS 1/2 OZ. COPPER, OVERPLATE TO 1 1/2 OZ. INTERNAL SIGNAL LAYERS 1 OZ. COPPER.
- SOLDER MASK; SHALL BE BLUE LIQUID PHOTOIMAGABLE (LPI) APPLIED ON BOTH SIDES OVER BARE COPPER AND SHALL MEET IPC-SM-840 (LATEST REV.) CLASS 3.
- SILK SCREEN; SHALL BE PERMANENT NON-CONDUCTIVE EPOXY INK, COLOR WHITE.
- U.L. RATING; 94V0 MINIMUM.

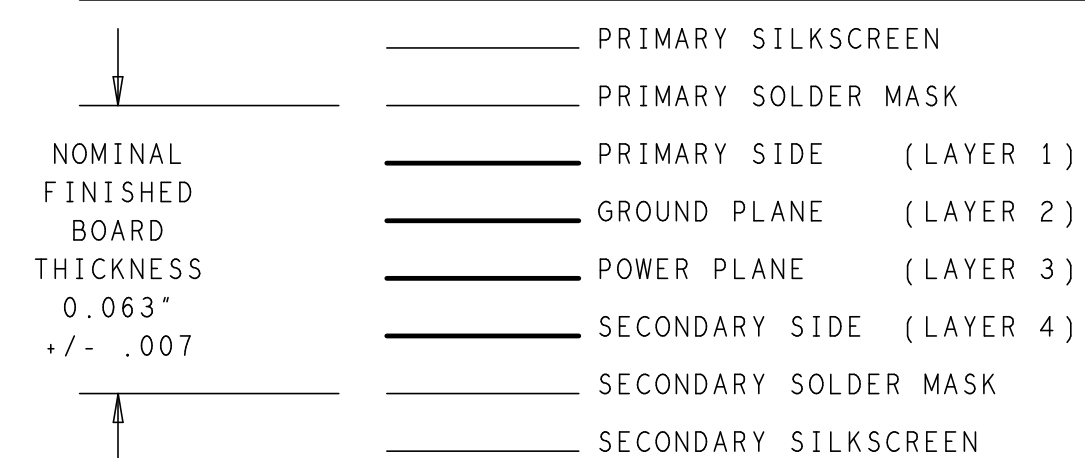
FABRICATION:

- REFER TO IPC-6010 SERIES (LATEST REV.), CLASS 2 FOR FABRICATION UNLESS OTHERWISE SPECIFIED.
- UNDIMENSIONED HOLES TO BE LOCATED WITHIN +/- .005 OF THEIR TRUE POSITION WITH RESPECT TO ARTWORK.
- PLATED HOLE WALL THICKNESS SHALL NOT BE LESS THAN .001 INCH MINIMUM AVERAGE, WITH NO READING LESS THAN .0008 BY CROSS SECTION.
- HOLE DIAMETERS APPLY AFTER PLATING.
- FINISHED CONDUCTOR WIDTHS SHALL NOT BE REDUCED FROM THE NOMINAL INDICATED ON THE MASTER PATTERN, BY MORE THAN THE CONDUCTOR THICKNESS.
- MINIMUM DESIGN LINE WIDTH IS .005 INCH.
- MINIMUM DESIGN SPACING IS .005 INCH.
- BOARD/PANEL MUST MEET IPC-A-600 (LATEST REV.) CLASS 2 FOR FLATNESS.
- MFGR. TO LEGIBLY ETCH OR STAMP/SCREEN WITH PERMANENT NON-CONDUCTIVE INK ON SECONDARY SIDE IN A CLEAR AREA UNLESS OTHERWISE INDICATED;
  - A. U.L. CODE
  - B. DATE CODE (STAMP)
  - C. FLAMMABILITY RATING
  - D. MFGR. LOGO
  - E. SUCCESSFUL ELECTRICAL BOARD TEST.
- NON-FUNCTIONAL PADS MAY BE REMOVED FROM INNER SIGNAL LAYERS AT MFGR. DISCRETION.
- IF PAD SIZES PROVIDED ARE NOT LARGE ENOUGH TO MAINTAIN ANNULAR RING REQUIREMENT, MFGR. MAY TEAR DROP PADS TO MAINTAIN ANNULAR RING AT PAD TO CIRCUIT INTERFACE ONLY AND MUST INSURE ELECTRICAL INTEGRITY.
- REPAIRS PER IPC-R-700 ARE ALLOWED.
- MODIFICATIONS TO THE ARTWORK, OTHER THAN THOSE DESCRIBED ON THE FABRICATION DRAWING, ARE NOT ALLOWED WITHOUT WRITTEN AUTHORIZATION.
- FINISH: SURFACES SHALL HAVE ENIG FINISH PLATED WITH 2-6 MICROINCHES OF IMMERSION GOLD OVER 100-200 MICROINCHES OF ELECTROLESS NICKEL.



PRIMARY SIDE

4 LAYER STACKUP



CHARACTERISTIC IMPEDANCE = 50 OHMS +/- 10%  
 ARTWORK LINE WIDTH FOR IMPEDANCE CONTROLLED LINES = 0.008"  
 DIFFERENTIAL IMPEDANCE = 100 OHMS +/- 10%  
 ARTWORK LINE WIDTH FOR IMPEDANCE CONTROLLED LINES = 0.005"

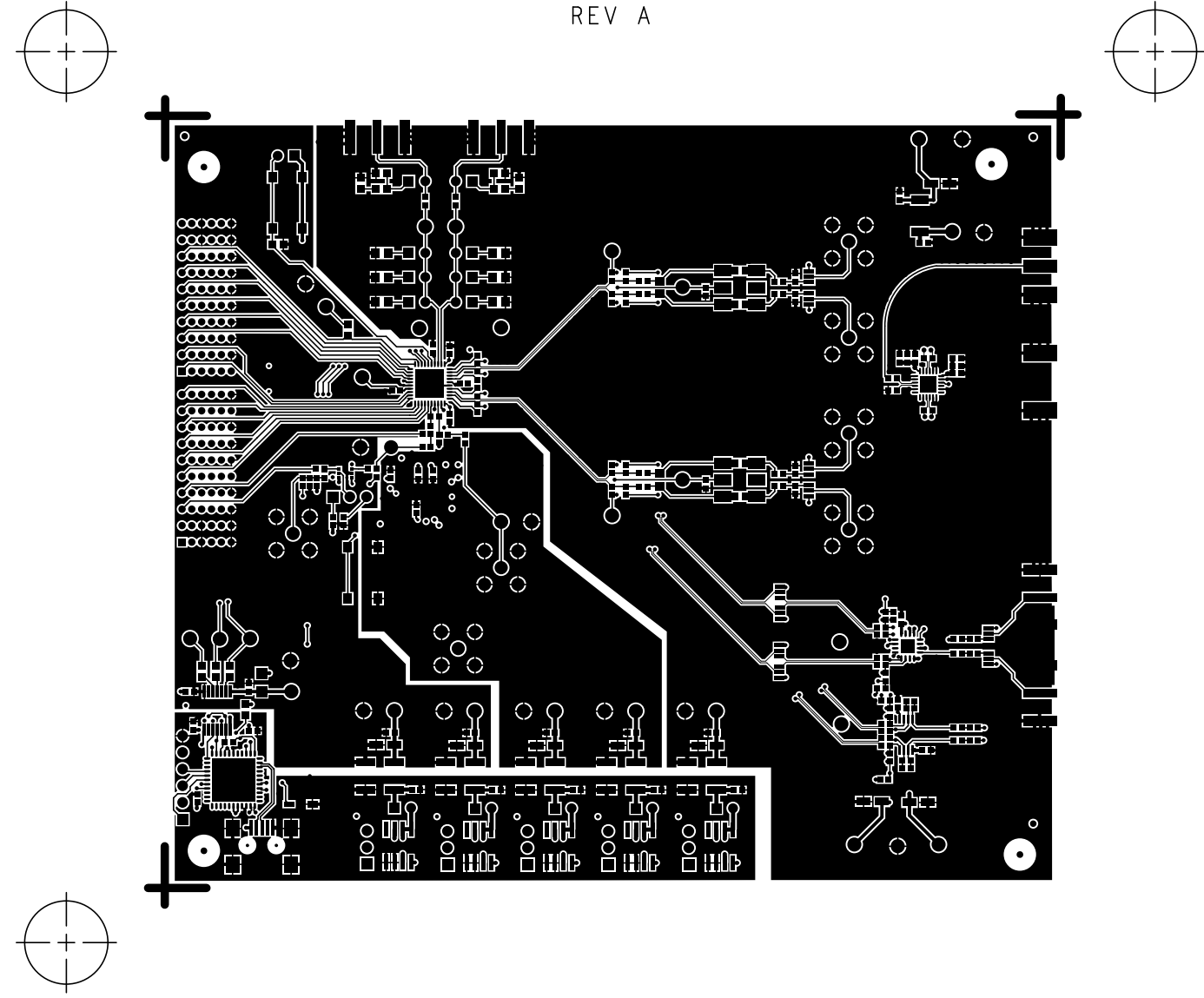
HOLE TOLERANCE

UNLESS SPECIFIED  
 PLATED: +/- .003  
 NON PLATED: +/- .001

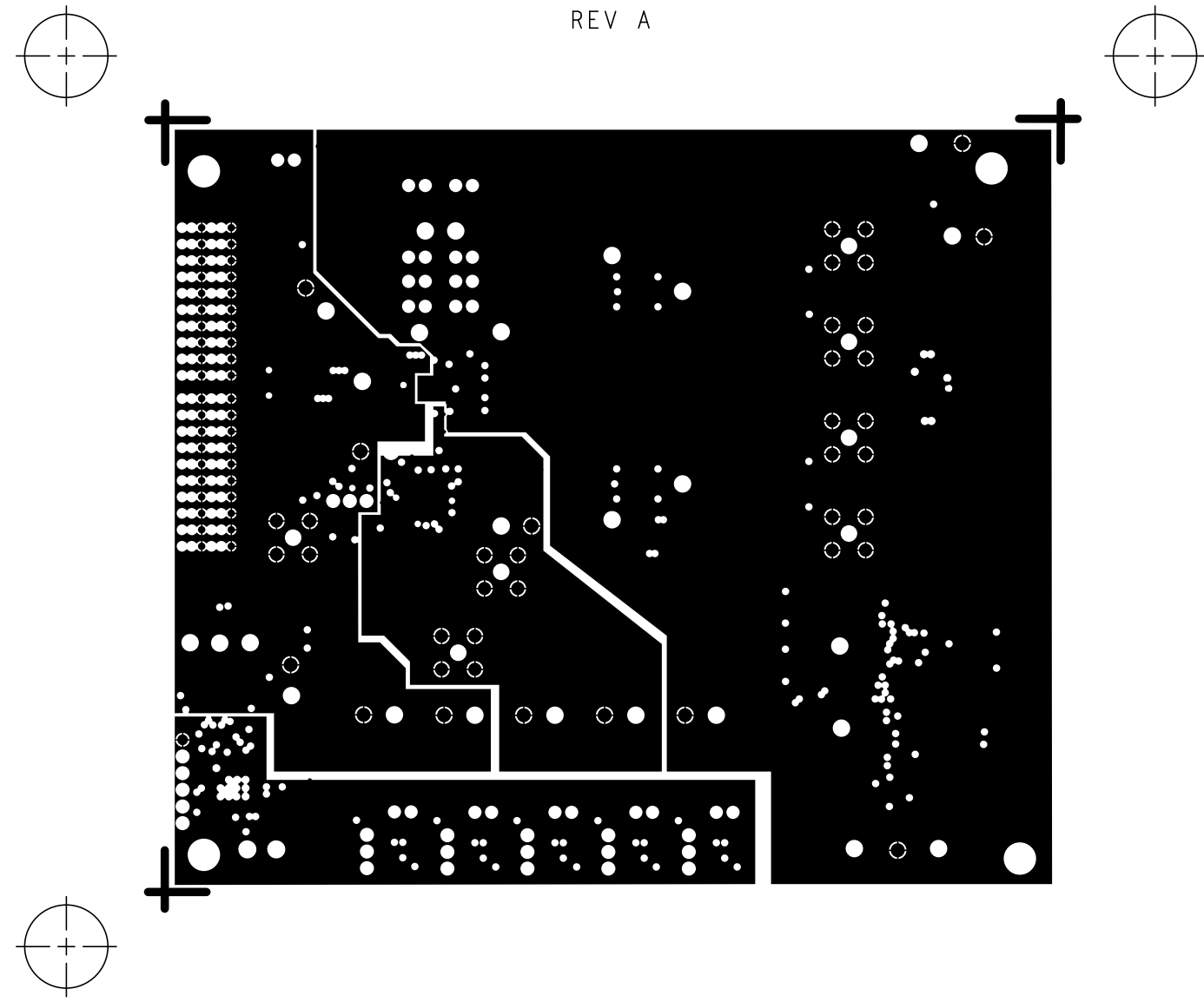
FINISHED HOLES IN MILS				
ALL UNITS ARE IN MILS				
FIGURE	SIZE	PLATED	QTY	TOLERANCE/NOTES
+	10.0	PLATED	14	
□	12.0	PLATED	427	
A	15.0	PLATED	30	
B	16.0	PLATED	579	
C	25.0	PLATED	2	
D	25.0	PLATED	118	
E	40.0	PLATED	28	
F	45.0	PLATED	24	
G	60.0	PLATED	35	
H	63.0	PLATED	39	
J	40.0	NON-PLATED	2	
K	125.0	NON-PLATED	4	

UNLESS OTHERWISE SPECIFIED DIMENSIONS ARE IN INCHES TOLERANCES DECIMALS FRACTIONS ANGLES .XX .010 .1/32 .1 .XXX .005 .1/32 .1	NCDRILL		ANALOG DEVICES		HSC DIVISION 804 WOBURN STREET WILMINGTON, MA 01887
	APPROVAL	DATE	TITLE		
MATERIAL	DRAWN BY PMA	29JUN09	AD9117 / AD9717 EVALUATION BOARD		
DESIGNED	CHECKED		SIZE	FSCM NO	DRAWING NUMBER
APPROVED	MFG ENGINEER		D		09-012703
DO NOT SCALE DWG			SCALE	1/1	SHEET 1 OF 1

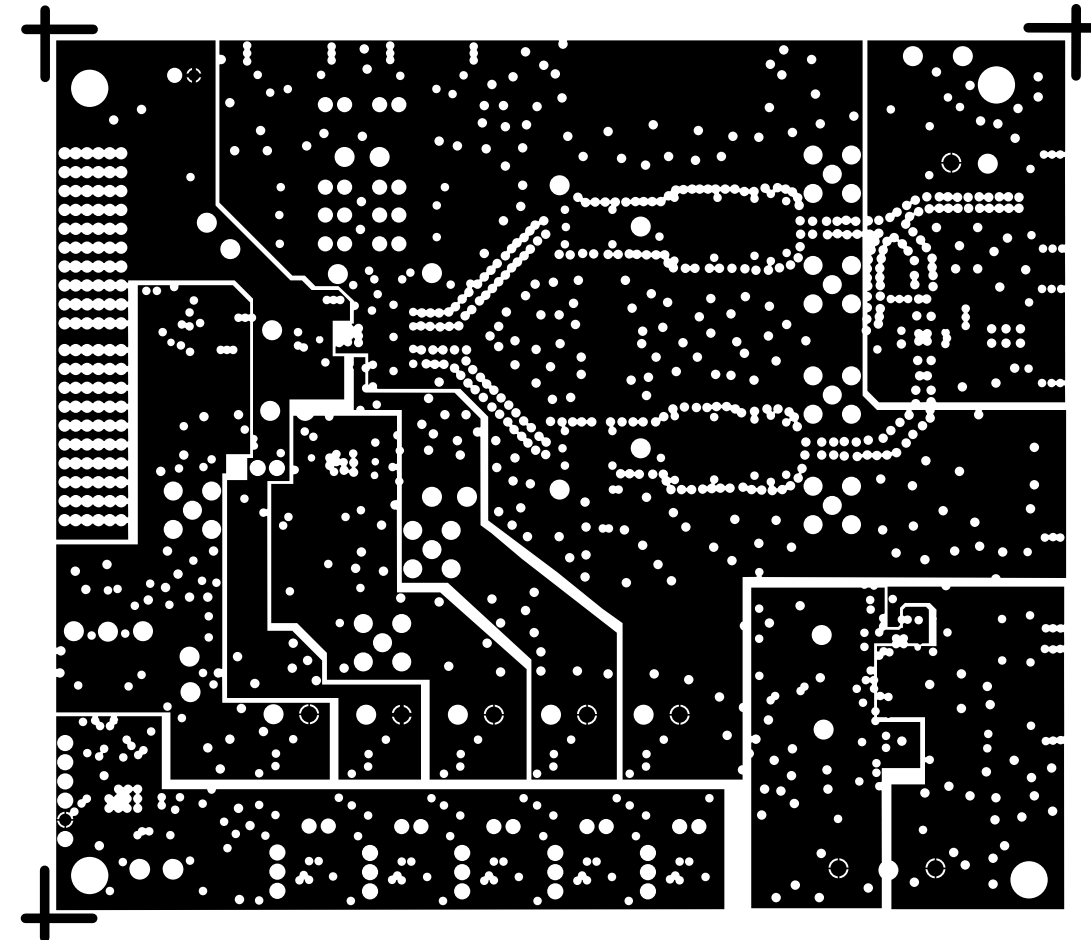
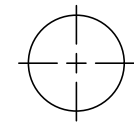
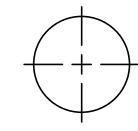
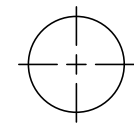
L1 PRIMARY  
08-012703-01  
REV A



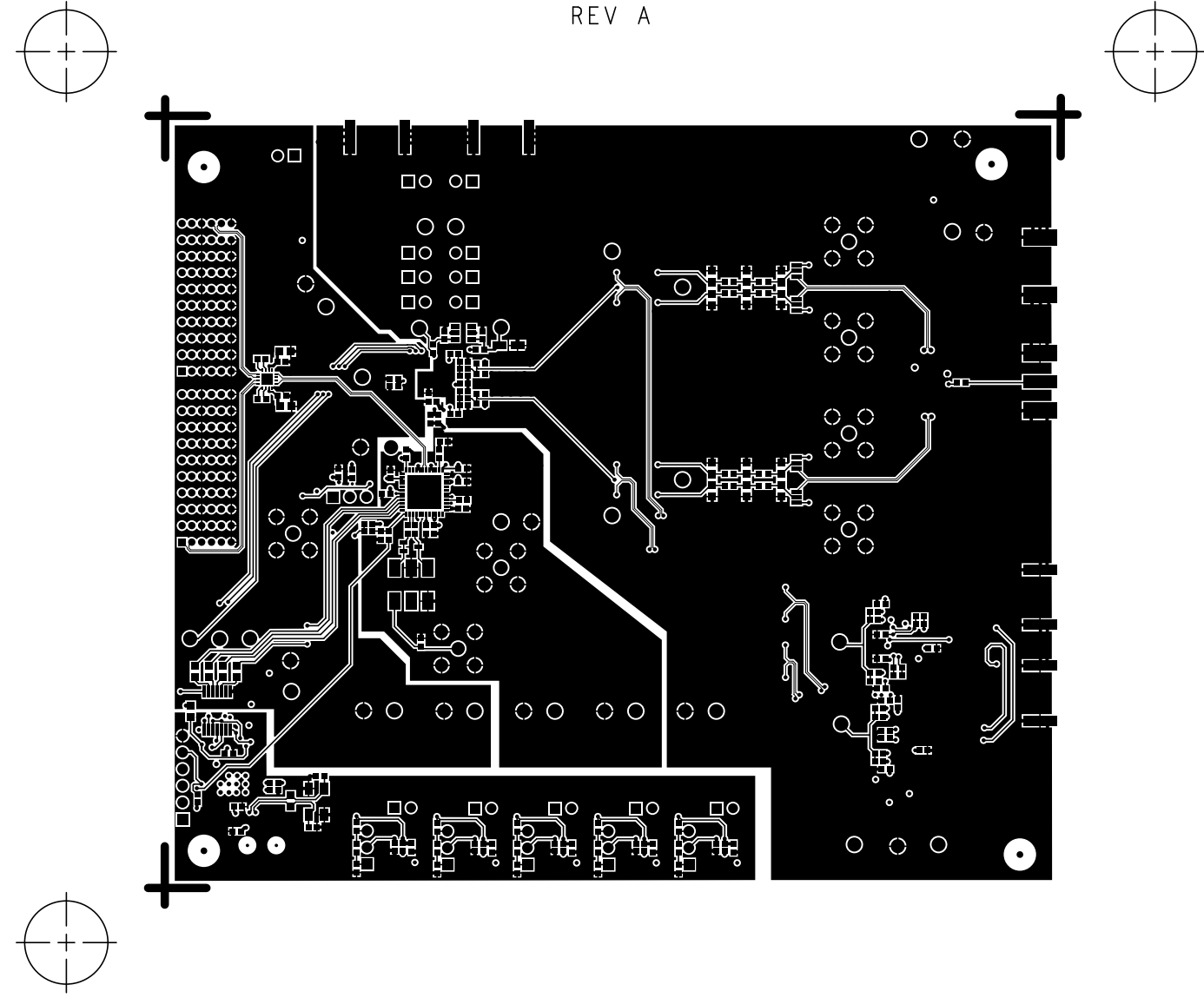
L2 GROUND  
08-012703-07  
REV A



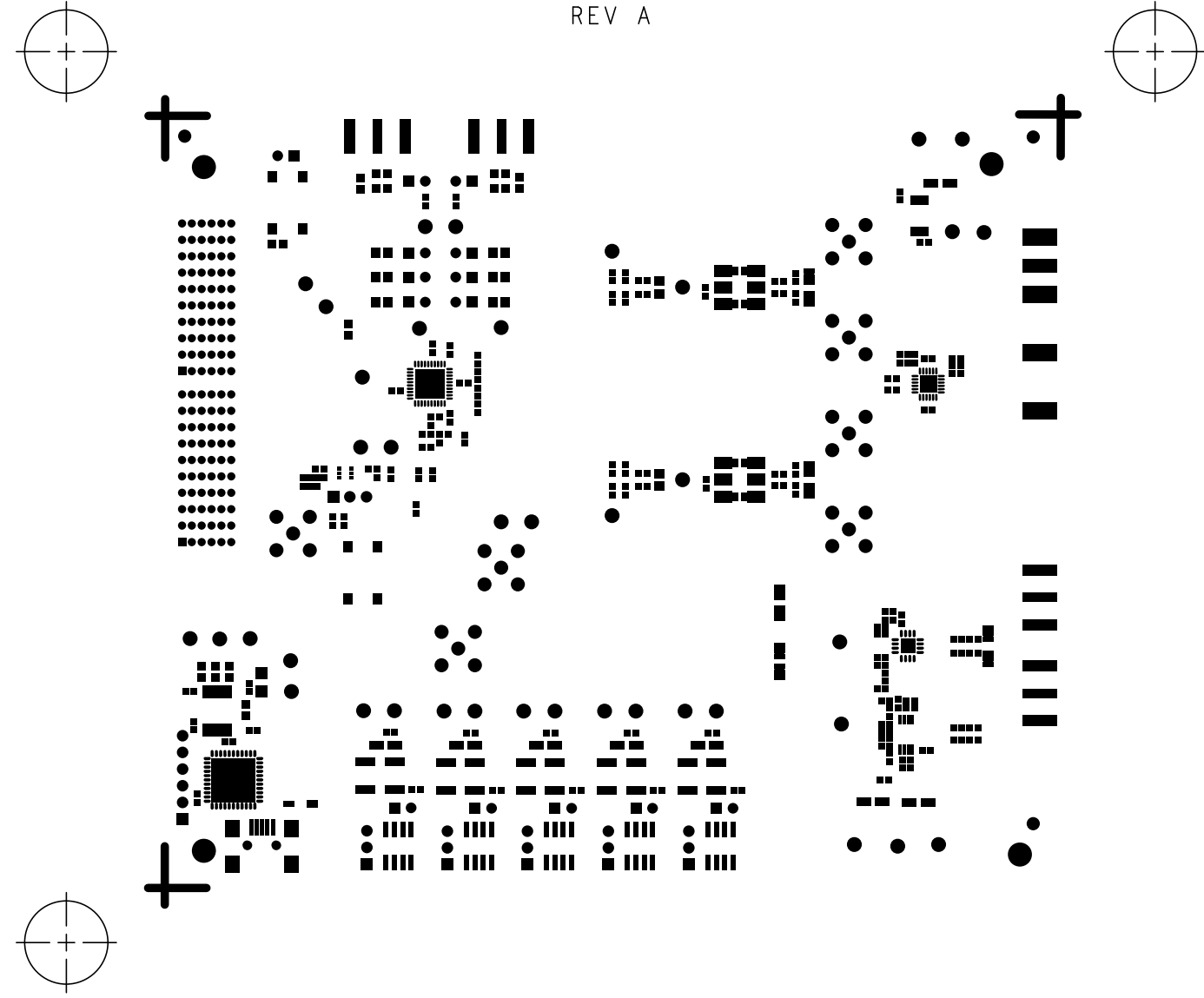
L3 POWER  
08-012703-08  
REV A



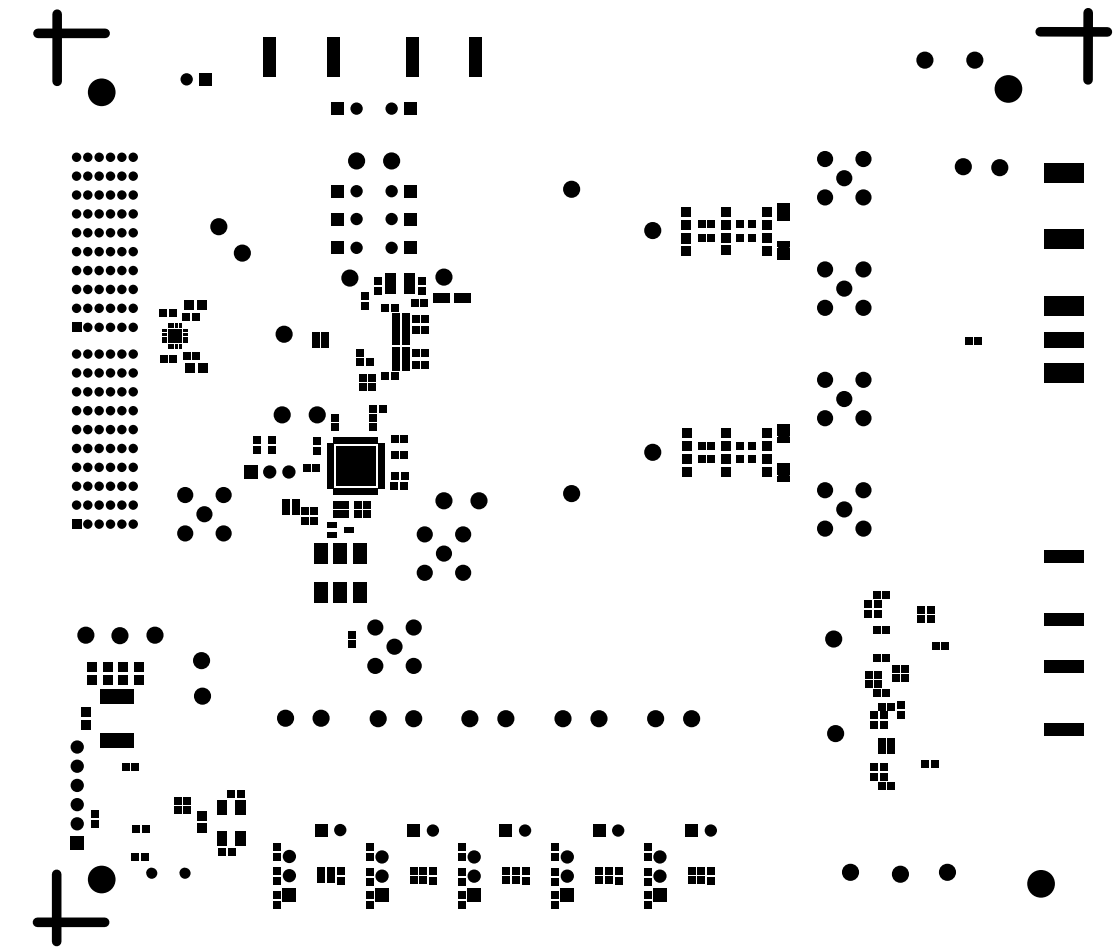
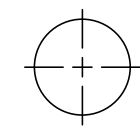
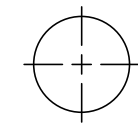
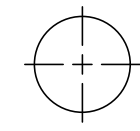
L4 SECONDARY  
08-012703-02  
REV A



SOLDERMASK PRIMARY  
08-012703-04  
REV A

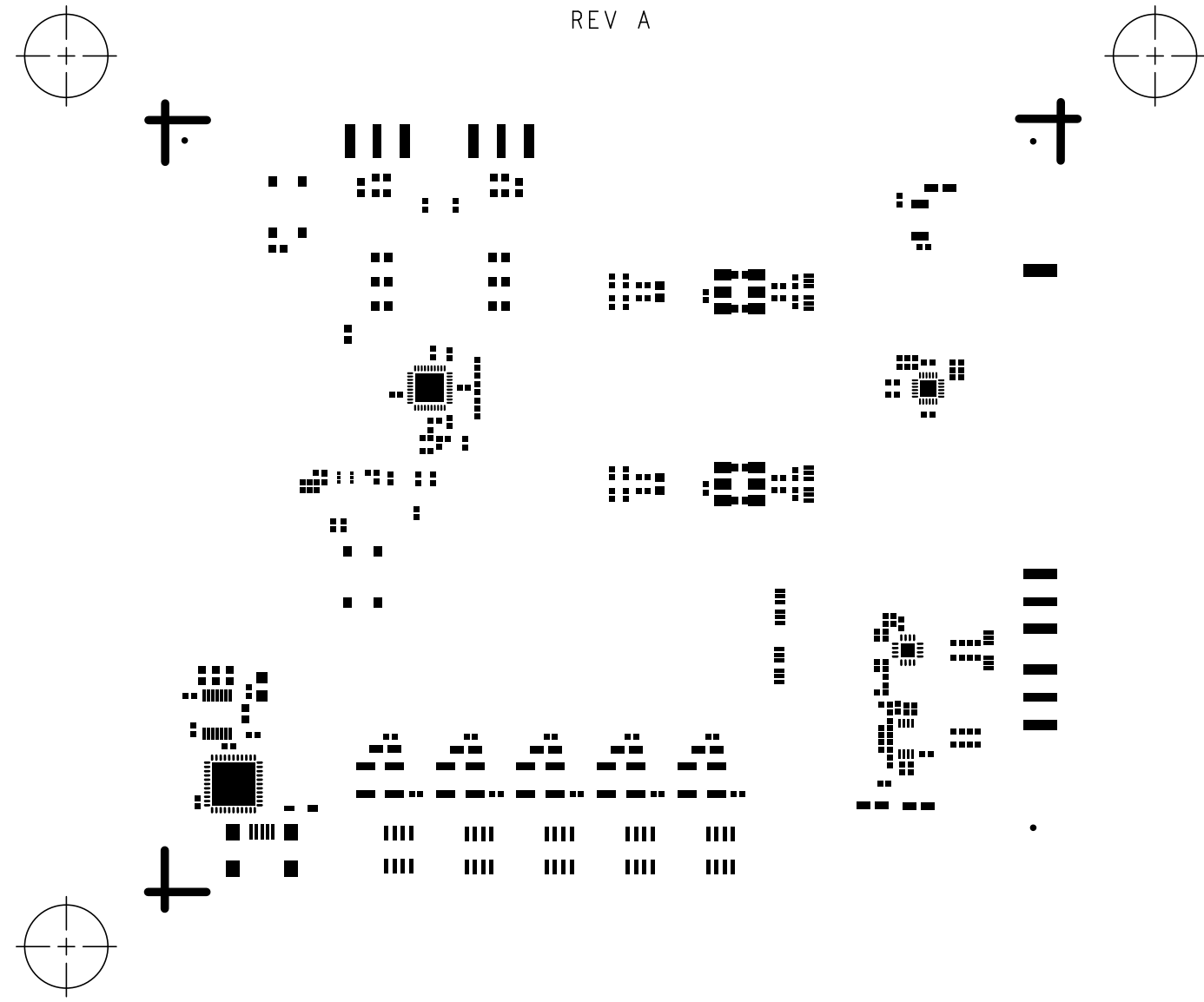


SOLDERMASK SECONDARY  
08-012703-06  
REV A

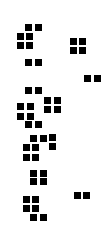
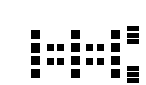
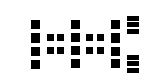
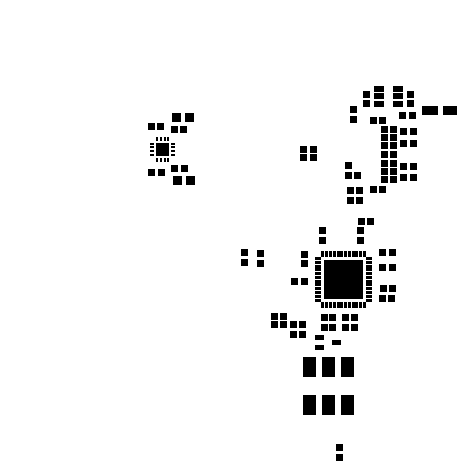
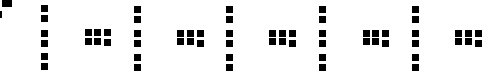
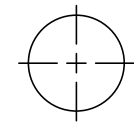
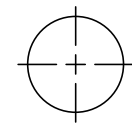
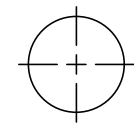




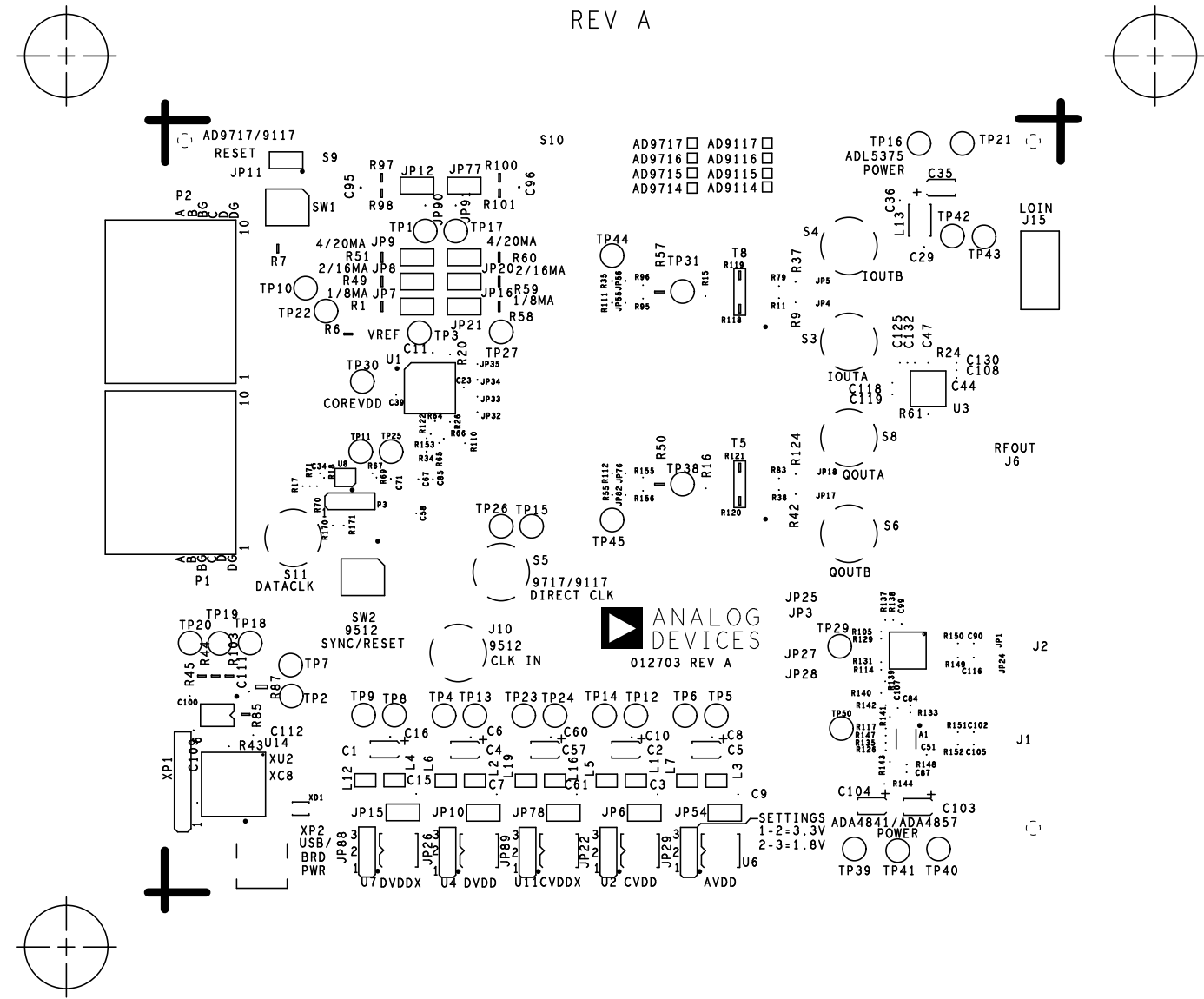
PASTEMASK PRIMARY  
08-012703-09  
REV A



PASTEMASK\_SECONDARY  
08-012703-10  
REV A



SILKSCREEN PRIMARY  
08-012703-03  
REV A



SILKSCREEN SECONDARY  
08-012703-05  
REV A

